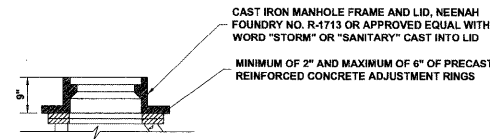


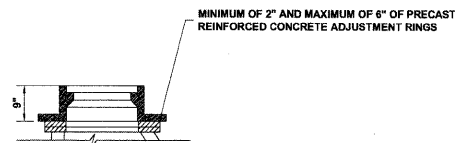
ROUTE NO.	SECTION	COUNTY	TOTAL SHEETS	SHEET NO.
1419	08-00127-00-RS	COOK	15	6
ILLINOIS PROJECT			M-9003 (050)	
CONTRACT NO.			63102	

GENERAL NOTES

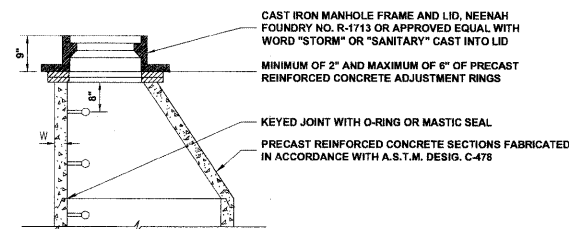
1. THE EDWIN HANCOCK ENGINEERING COMPANY SHALL BE NOTIFIED AT LEAST TWO (2) WORKING DAYS PRIOR TO COMMENCEMENT OF CONSTRUCTION AT (708) 865-0300.
2. THE VILLAGE OF MAYWOOD PUBLIC WORKS DEPARTMENT SHALL BE NOTIFIED AT LEAST TWO (2) WORKING DAYS PRIOR TO COMMENCEMENT OF CONSTRUCTION AT (708) 450-4482.
3. THE CONTRACTOR SHALL SAW CUT ALL BUTT JOINTS TO ADJOINING PAVEMENTS NOT MORE THAN 24 HOURS PRIOR TO PLACING SURFACE COURSE.
4. IT SHALL BE THE CONTRACTOR'S RESPONSIBILITY TO TAKE PRECAUTIONS SO AS NOT TO DAMAGE PARKWAYS AND CURB OUTSIDE THE PRESCRIBED LIMITS OF RESTORATION. NO PARKWAY OR CURB RESTORATION IS INCLUDED FOR PAYMENT EXCEPT AS NECESSARY FOR STRUCTURE ADJUSTMENTS AND REPLACEMENT, OR AS DIRECTED BY ENGINEER.
5. STOCKPILING OF MATERIALS ON THE PARKWAYS OR CURB WILL NOT BE ALLOWED, INCLUDING EXCAVATED MATERIAL OR TRENCH BACKFILL MATERIAL. THE CONTRACTOR SHALL BE RESPONSIBLE FOR RESTORING ANY DAMAGE TO THE PARKWAY OR SOD OUTSIDE OF THE PRESCRIBED LIMITS TO THE SATISFACTION OF THE ENGINEER AND THE VILLAGE AT HIS OWN EXPENSE.



STRUCTURE ADJUSTMENT DETAIL WITH FRAME AND LID



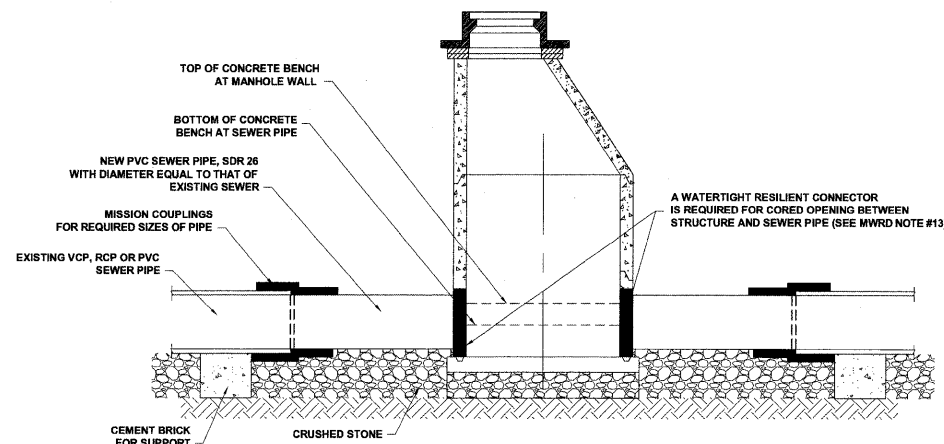
STRUCTURE ADJUSTMENT DETAIL WITHOUT FRAME AND LID



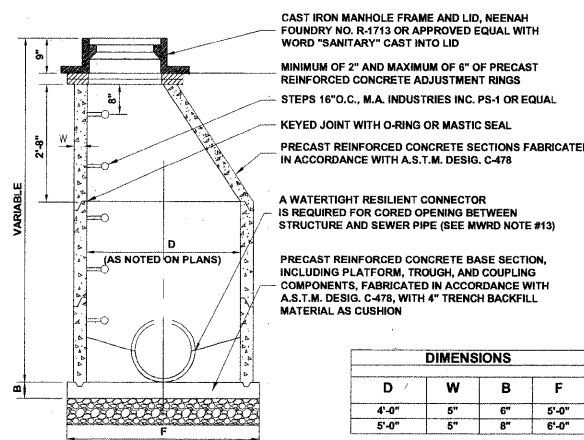
STRUCTURE RECONSTRUCTION DETAIL

M.W.R.D.G.C. GENERAL NOTES

1. THE MWRD SEWER SYSTEMS SECTION FIELD OFFICE MUST BE NOTIFIED AT LEAST TWO (2) WORKING DAYS PRIOR TO THE COMMENCEMENT OF WORK AT (708) 588-4055.
2. ELEVATION DATUM IS U.S.G.S.
3. ALL FLOOR DRAINS SHALL DISCHARGE TO THE SANITARY SEWER SYSTEM.
4. ALL DOWNSPOUTS AND FOOTING DRAINS SHALL DISCHARGE INTO THE STORM SEWER SYSTEM.
5. ALL PVC SEWER PIPE SHALL BE SDR 26. ALL PVC SEWER PIPE JOINTS SHALL CONFORM TO ASTM D-3139 FOR PVC PIPE 12" IN DIAMETER OR LESS. ALL PVC SEWER PIPE JOINTS SHALL CONFORM TO ASTM D-3212 FOR PVC PIPE 15" IN DIAMETER OR MORE. ALL PVC SEWER PIPE 12" IN DIAMETER OR LESS SHALL CONFORM TO ASTM D-2241 (WATER QUALITY PIPE). ALL PVC SEWER PIPE 15" IN DIAMETER OR MORE SHALL CONFORM TO ASTM D-3034.
6. ALL D.I.P. STORM, COMBINED AND SANITARY SEWER PIPE JOINTS SHALL CONFORM TO ANSI A-21.11. ALL D.I.P. SEWER PIPE SHALL CONFORM TO ASTM A-21.51. ALL D.I.P. SEWER PIPE SHALL BE CLASS 52.
7. ALL SANITARY, COMBINED, AND STORM SEWER CONSTRUCTION IN COMBINED SEWER AREAS, REQUIRES STONE BEDDING 1/4" TO 1" IN SIZE, WITH A MINIMUM THICKNESS EQUAL TO 1/4 THE OUTSIDE DIAMETER OF THE SEWER PIPE, BUT NOT LESS THAN FOUR INCHES (4") NOR MORE THAN EIGHT INCHES (8"). MATERIAL SHALL BE CA-11 OR CA-13 AND SHALL BE EXTENDED AT LEAST 12" ABOVE THE TOP OF THE PIPE.
8. "BAND SEAL" OR SIMILAR FLEXIBLE-TYPE COUPLINGS SHALL BE USED IN THE CONNECTION OF SEWER PIPE OF DISSIMILAR MATERIALS.
9. WHEN CONNECTING TO AN EXISTING SEWER MAIN BY MEANS OTHER THAN AN EXISTING WYE, TEE, OR AN EXISTING MANHOLE, ONE OF THE FOLLOWING METHODS SHALL BE USED:
 - a) CIRCULAR SAW-CUT OF SEWER MAIN BY MECHANICAL CORING MACHINE, AND PROPER INSTALLATION OF HUB-WYE SADDLE OR HUB-TEE SADDLE, IN ACCORDANCE WITH THE MANUFACTURER'S RECOMMENDATIONS.
 - b) REMOVE AN ENTIRE SECTION OF PIPE (BREAKING ONLY THE TOP OF ONE BELL) AND REPLACE WITH A WYE OR TEE BRANCH SECTION. AFTER THE WYE OR TEE BRANCH IS INSERTED, CONCRETE SHALL BE PLACED OVER THE BROKEN AREA TO A MINIMUM THICKNESS OF 4" AND TO A DIMENSION OF 8" IN ALL DIRECTIONS.
 - c) USING PIPE CUTTER, NEATLY AND ACCURATELY CUT OUT DESIRED LENGTH OF PIPE FOR INSERTION OF PROPER FITTING. USE "BAND SEAL" OR SIMILAR COUPLINGS TO HOLD FIRMLY IN PLACE. FOLLOW MANUFACTURER'S RECOMMENDATIONS FOR THE INSTALLATION.
10. WHEREVER A SEWER CROSSES UNDER A WATER MAIN, THE MINIMUM VERTICAL DISTANCE FROM THE TOP OF THE SEWER TO THE BOTTOM OF THE WATER MAIN SHALL BE 18 INCHES. FURTHERMORE, A MINIMUM HORIZONTAL DISTANCE OF 10 FEET BETWEEN SANITARY/COMBINED SEWERS AND WATER MAINS SHALL BE MAINTAINED UNLESS: THE SEWER IS LAID IN A SEPARATE TRENCH, KEEPING A MINIMUM 18" VERTICAL SEPARATION; OR THE SEWER IS LAID IN THE SAME TRENCH WITH THE WATER MAIN LOCATED AT THE OPPOSITE SIDE ON A BENCH OF UNDISTURBED EARTH, KEEPING A MINIMUM 18" VERTICAL SEPARATION. IF EITHER THE VERTICAL OR HORIZONTAL DISTANCES DESCRIBED ABOVE CANNOT BE MAINTAINED, OR THE SEWER CROSSES ABOVE THE WATER MAIN, THE SEWER SHALL BE CONSTRUCTED TO WATER MAIN STANDARDS.
11. ALL SANITARY MANHOLES, (AND STORM MANHOLES IN COMBINED SEWER AREAS), SHALL HAVE A MINIMUM INSIDE DIAMETER OF 48 INCHES, AND SHALL BE PRE-CAST REINFORCED CONCRETE.
12. ALL ABANDONED SEWERS SHALL BE PLUGGED AT BOTH ENDS WITH A MINIMUM OF TWO (2) FEET LONG, NON-SHRINK CONCRETE/MORTAR PLUG.
13. ALL INLET AND OUTLET PIPES OF SANITARY SEWER MANHOLES AND OTHER UNDERGROUND STRUCTURES (AND IN COMBINED SEWER AREAS, ALSO ALL COMBINED/STORM SEWER MANHOLES, CATCH BASINS, INLETS, AND UNDERGROUND DETENTION STORAGE STRUCTURES) SHALL BE JOINED WITH WATERTIGHT FLEXIBLE RUBBER CONNECTORS CONFORMING TO A.S.T.M. C-443 & C-923 WITH STAINLESS STEEL BANDS.
14. THE MAXIMUM ALLOWABLE INFILTRATION OR EXFILTRATION IS 100 GAL/DAY/MILE/INCH DIA OF THE SEWER PIPE.



PROPOSED COMBINED MANHOLE INSTALLED ON EXISTING SEWER MAIN



PROPOSED COMBINED MANHOLE DETAIL

MAYWOOD
MADISON STREET IMPROVEMENT (LAPP)
DETAILS

REVISION	DATE



◆ Civil Engineers
◆ Municipal Consultants
◆ Established 1911

9933 Roosevelt Road
Westchester, Illinois 60154-2780
Phone: 708/865-0300
Fax: 708/865-1212

SCALE: NONE

DRAWN BY: MK
CHECKED BY: JGG
DATE: 11/10/2008

E.H.E. PROJECT NO.: 565-08-20601