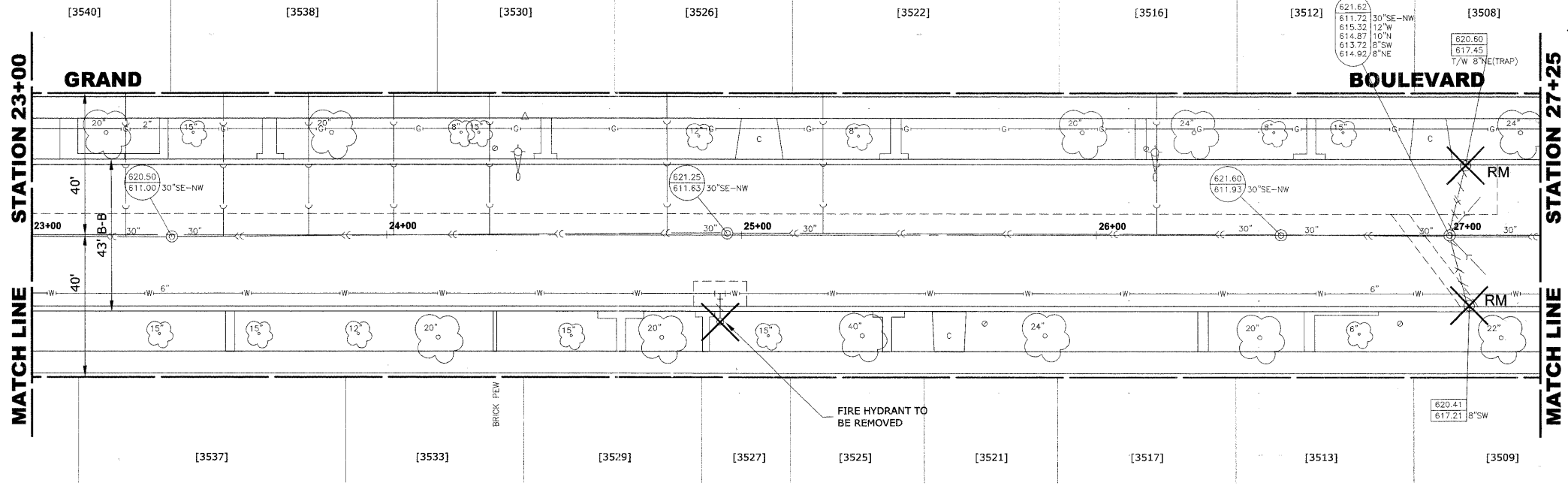
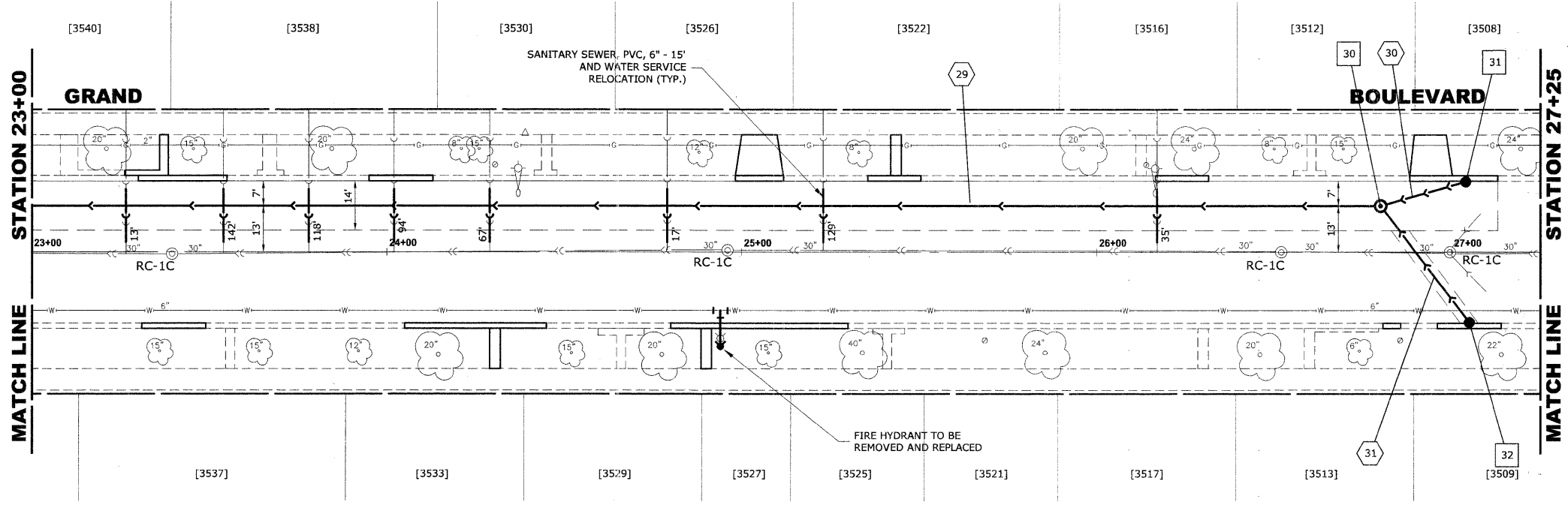


ROUTE NO.	SECTION	COUNTY	TOTAL SHEETS	SHEET NO.
FAU 1694	07-00122-00-PV	COOK	55	26
ILLINOIS PROJECT M-9003 (125)				
VILLAGE SECTION				
CONTRACT NO. 63101				



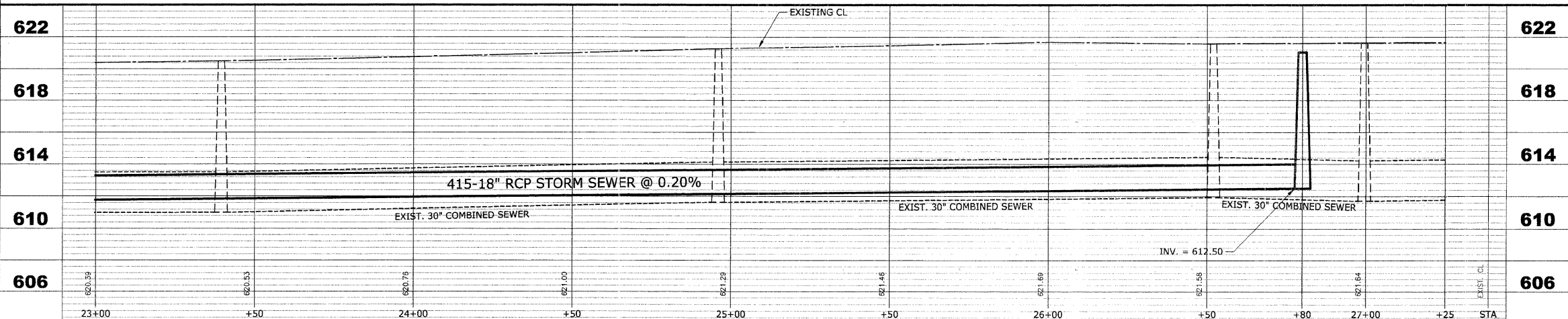
STRUC. NO.	STA	OFFSET	TYPE	RIM ELEV.	INVERT ELEV.
30	26+80	13' LT	R.D. STORM SEWER MANHOLE, 4' DIA., TYPE 1 FRAME, CLOSED LID	621.05	616.85 W 616.50 N 612.50 SE
31	27+05	20' LT	R.D. CATCH BASIN, 4' DIA., TYPE 1 FRAME, OPEN LID	620.60	617.10 E
32	27+05	20' RT	R.D. CATCH BASIN, 4' DIA., TYPE 1 FRAME, OPEN LID	620.40	616.90 S

EXISTING TOPOGRAPHY



PIPE NO	LENGTH	DIA.	TYPE	SLOPE	C.Y.T.B.
29	415'	18"	SS, TY-2, RCCP, CL-III	0.19%	488.8
30	25'	10"	SS, PVC, SDR 26	1.00%	1.8
31	40'	10"	SS, PVC, SDR 26	1.00%	3.5

NOTE :
 FIGURES SHOWN AT THE END OF THE 6" SANITARY SEWER SERVICES INDICATE THE DISTANCE THE SERVICE IS FROM THE COMBINED SEWER MANHOLE.



PROPOSED IMPROVEMENTS

HANCOCK ENGINEERING
 Civil Engineers
 Municipal Consultants
 Established 1911

**BROOKFIELD
 GRAND BOULEVARD IMPROVEMENTS
 GRAND BOULEVARD
 UTILITIES PLAN AND PROFILE**

REVISION:

DRAWN BY: LEV/ECW/MK
 CHECKED BY: JCG
 DATE: 01-09-09
 SCALE: 1"=20'H. & 1"=4'V.
 E.H.E. PROJECT NO.: 125-08-13501

Drawing file: W:\Projects\12508135 - Grand Blvd Grant to Veterans\Grand Blvd\Grand Blvd.dwg Jan 09, 2009 - 10:52am