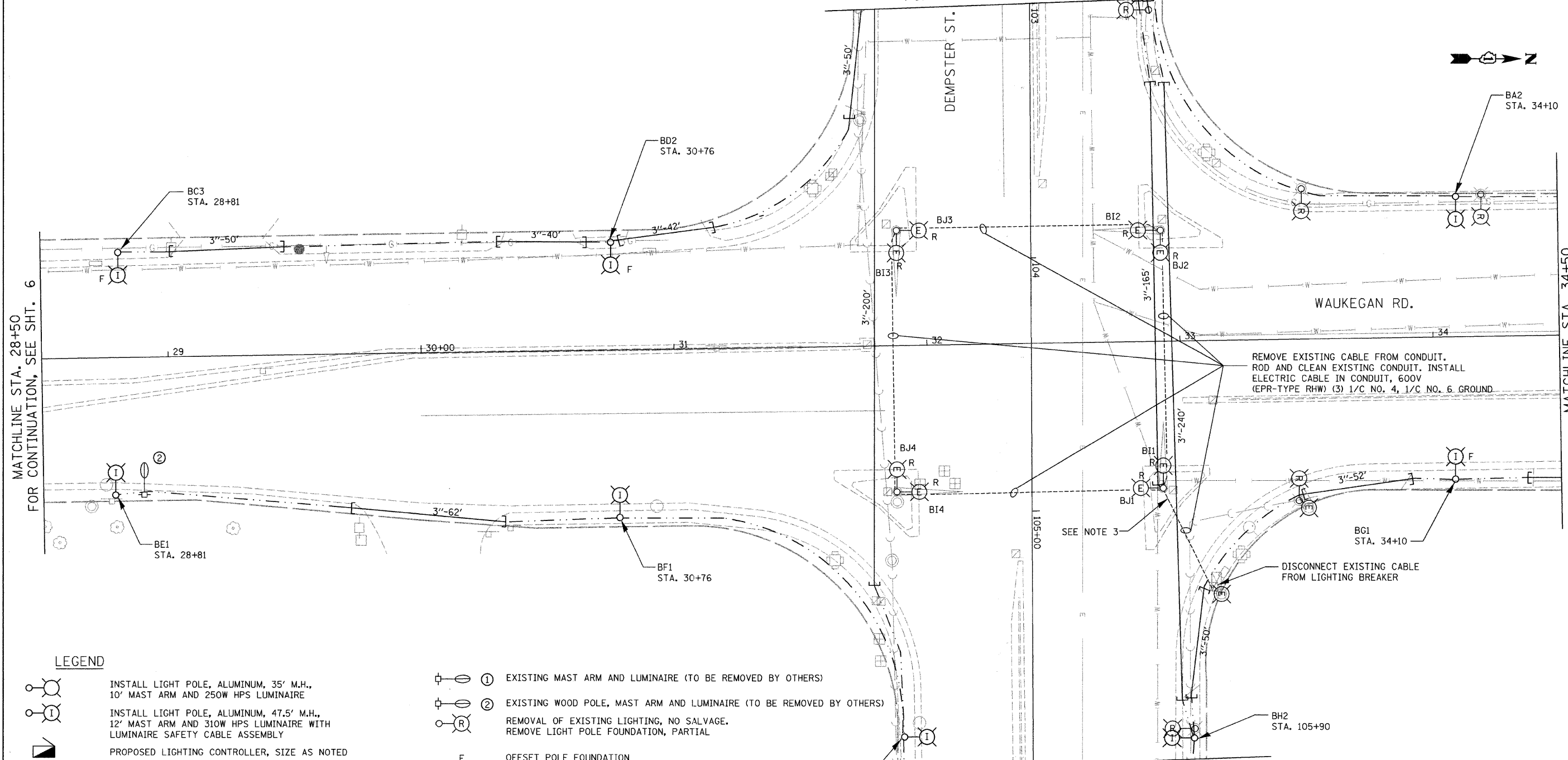


MATCHLINE STA. 103+00
FOR CONTINUATION, SEE SHT. 9

MATCHLINE STA. 28+50
FOR CONTINUATION, SEE SHT. 6

MATCHLINE STA. 34+50
FOR CONTINUATION SEE SHT. 8



REMOVE EXISTING CABLE FROM CONDUIT. ROD AND CLEAN EXISTING CONDUIT. INSTALL ELECTRIC CABLE IN CONDUIT, 600V (EPR-TYPE RHW) (3) 1/C NO. 4, 1/C NO. 6 GROUND

DISCONNECT EXISTING CABLE FROM LIGHTING BREAKER

LEGEND

- INSTALL LIGHT POLE, ALUMINUM, 35' M.H., 10' MAST ARM AND 250W HPS LUMINAIRE
- INSTALL LIGHT POLE, ALUMINUM, 47.5' M.H., 12' MAST ARM AND 310W HPS LUMINAIRE WITH LUMINAIRE SAFETY CABLE ASSEMBLY
- PROPOSED LIGHTING CONTROLLER, SIZE AS NOTED
- UNIT DUCT, WITH 3-1/C NO. 4 AND 1/C NO. 6 GROUND, 600V (EPR-TYPE RHW) 1 1/4" DIA. POLYETHYLENE
- UNIT DUCT, WITH 4-1/C NO. 4 AND 1/C NO. 6 GROUND, 600V (EPR-TYPE RHW) 1 1/2" DIA. POLYETHYLENE
- GALVANIZED STEEL CONDUIT, PUSHED, DIAMETER AND LENGTH AS NOTED

- EXISTING MAST ARM AND LUMINAIRE (TO BE REMOVED BY OTHERS)
- EXISTING WOOD POLE, MAST ARM AND LUMINAIRE (TO BE REMOVED BY OTHERS)
- REMOVAL OF EXISTING LIGHTING, NO SALVAGE. REMOVE LIGHT POLE FOUNDATION, PARTIAL
- OFFSET POLE FOUNDATION
- EXISTING LIGHTING UNIT TO REMAIN
- EXISTING ORNAMENTAL LIGHTING UNIT TO REMAIN
- REPLACE EXISTING LUMINAIRE WITH LUMINAIRE, SODIUM VAPOR, HORIZONTAL MOUNT 310 WATT AND LUMINAIRE SAFETY CABLE ASSEMBLY

NOTES:

1. ALL POLES SHALL BE OFFSET 3' FROM BACK OF CURB TO FACE OF POLE, UNLESS OTHERWISE NOTED.
2. EXISTING LUMINAIRES SHALL REMAIN IN USE UNTIL THE NEW LIGHTING SYSTEM IS OPERATIONAL.
3. EXISTING FEED FROM TRAFFIC SIGNAL CONTROLLER TO BE REMOVED AFTER CONNECTION TO THE NEW LIGHTING CONTROLLER.
4. THE CONTRACTOR SHALL REMOVE THE CABLE BETWEEN COMBO POLES AND EXISTING LUMINAIRES, THEN INSTALL NEW LUMINAIRES AND CABLE AND RECONNECT TO THE EXISTING LIGHTING CONTROLLER DURING THE SAME DAY SO THAT THE INTERSECTION REMAINS LIT DURING ALL EVENING HOURS. UPON COMPLETION OF THE NEW LIGHTING CONTROLLER, THESE NEW LUMINAIRES SHALL BE DISCONNECTED FROM THE EXISTING LIGHTING CONTROLLER AND CONNECTED TO THE NEW CONTROLLER. THIS WORK SHALL BE INCIDENTAL TO LIGHTING CONTROLLER TYPE CB-RCS 100AMP - 480 VOLT.

FILE NAME = m:\proj\66838\dwg\lighting\66838_84_prop_1.tg.dgn

Ciorba Group, Inc.
CONSULTING ENGINEERS
5507 North Cumberland Avenue, Suite 402
Chicago, Illinois 60656
Tel. 773.775.4009 Fax 773.775.4014

USER NAME = jvondra	DESIGNED - MLB	REVISED -
PLOT SCALE = 20.0000' / IN.	DRAWN - MLB	REVISED -
PLOT DATE = 12/29/2008	CHECKED - JMW	REVISED -
DATE = DECEMBER 2008	DATE -	REVISED -

**STATE OF ILLINOIS
DEPARTMENT OF TRANSPORTATION**

**WAUKEGAN ROAD LIGHTING IMPROVEMENTS
PROPOSED LIGHTING PLAN**

SCALE: 1"=20' SHEET NO. 4 OF 6 SHEETS STA. TO STA.

F.A.P. RTE. 348	SECTION 07-00102-00-LT	COUNTY COOK	TOTAL SHEETS 23	SHEET NO. 7
CONTRACT NO. 63099				
FED. ROAD DIST. NO. - [ILLINOIS] FED. AID PROJECT				