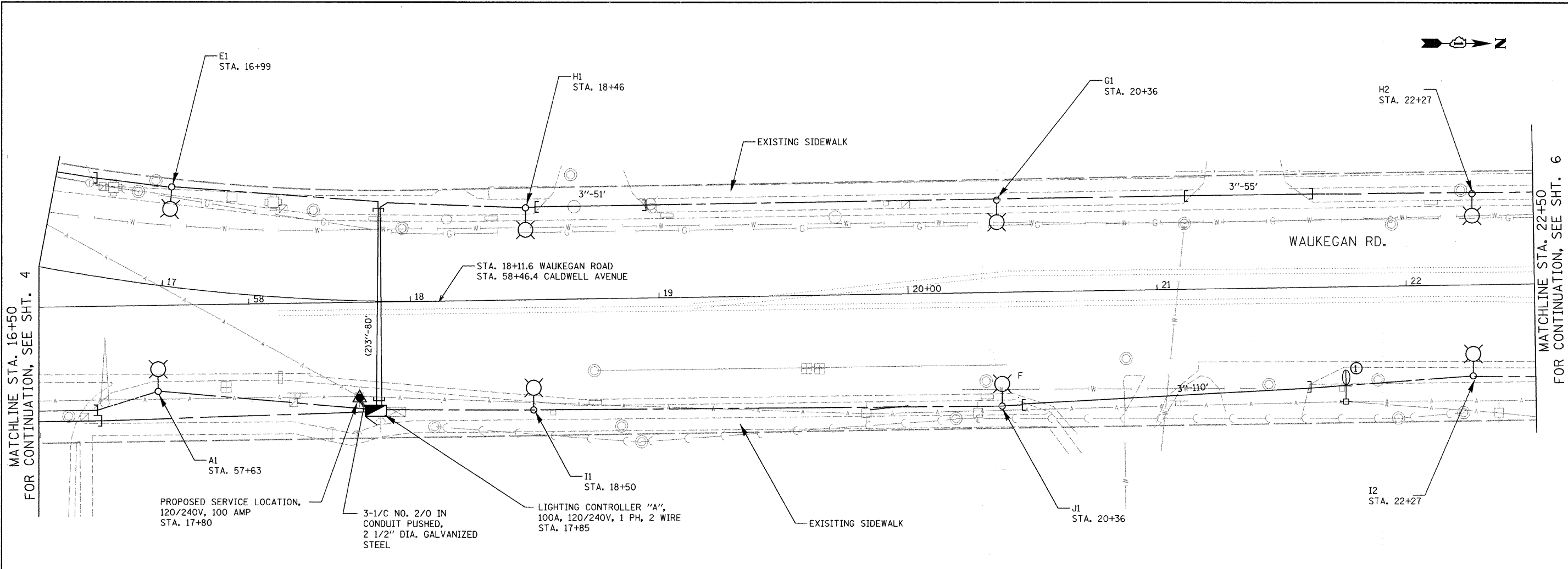


FILE NAME = m:\p\2\6833\design\lighting\6833\_02\_prop\_1.tg.dgn



MATCHLINE STA. 16+50  
FOR CONTINUATION, SEE SHT. 4

MATCHLINE STA. 22+50  
FOR CONTINUATION, SEE SHT. 6

**LEGEND**

- INSTALL LIGHT POLE, ALUMINUM, 35' M.H., 10' MAST ARM AND 250W HPS LUMINAIRE
- INSTALL LIGHT POLE, ALUMINUM, 47.5' M.H., 12' MAST ARM AND 310W HPS LUMINAIRE WITH LUMINAIRE SAFETY CABLE ASSEMBLY
- PROPOSED LIGHTING CONTROLLER, SIZE AS NOTED
- UNIT DUCT, WITH 3-1/2" NO. 4 AND 1/2" NO. 6 GROUND, 600V (EPR-TYPE RHW) 1 1/4" DIA. POLYETHYLENE
- UNIT DUCT, WITH 4-1/2" NO. 4 AND 1/2" NO. 6 GROUND, 600V (EPR-TYPE RHW) 1 1/2" DIA. POLYETHYLENE
- GALVANIZED STEEL CONDUIT, PUSHED, DIAMETER AND LENGTH AS NOTED
- ① EXISTING MAST ARM AND LUMINAIRE (TO BE REMOVED BY OTHERS)
- ② EXISTING WOOD POLE, MAST ARM AND LUMINAIRE (TO BE REMOVED BY OTHERS)
- REMOVAL OF EXISTING LIGHTING, NO SALVAGE. REMOVE LIGHT POLE FOUNDATION, PARTIAL
- F OFFSET POLE FOUNDATION
- EXISTING LIGHTING UNIT TO REMAIN
- EXISTING ORNAMENTAL LIGHTING UNIT TO REMAIN

**NOTES:**

1. ALL POLES SHALL BE OFFSET 3' FROM BACK OF CURB TO FACE OF POLE, UNLESS OTHERWISE NOTED.
2. EXISTING LUMINAIRES SHALL REMAIN IN USE UNTIL THE NEW LIGHTING SYSTEM IS OPERATIONAL.

**Ciorba Group, Inc.**  
CONSULTING ENGINEERS  
6507 North Cumberland Avenue, Suite 402  
Chicago, Illinois 60656  
Tel. 773.775.4000 Fax 773.775.4014

|                             |                      |           |
|-----------------------------|----------------------|-----------|
| USER NAME = jvondra         | DESIGNED - MLB       | REVISED - |
| PLOT SCALE = 20.0000' / IN. | DRAWN - MLB          | REVISED - |
| PLOT DATE = 12/29/2008      | CHECKED - JMV        | REVISED - |
|                             | DATE - DECEMBER 2008 | REVISED - |

**STATE OF ILLINOIS  
DEPARTMENT OF TRANSPORTATION**

**WAUKEGAN ROAD LIGHTING IMPROVEMENTS  
PROPOSED LIGHTING PLAN**

SCALE: 1"=20' SHEET NO. 2 OF 6 SHEETS STA. TO STA.

|   |                        |             |                 |             |
|---|------------------------|-------------|-----------------|-------------|
| F.A.P. RTE. 348                                   | SECTION 07-00102-00-LT | COUNTY COOK | TOTAL SHEETS 23 | SHEET NO. 5 |
| FED. ROAD DIST. NO. - [ILLINOIS] FED. AID PROJECT |                        |             |                 |             |
| CONTRACT NO. 63099                                |                        |             |                 |             |