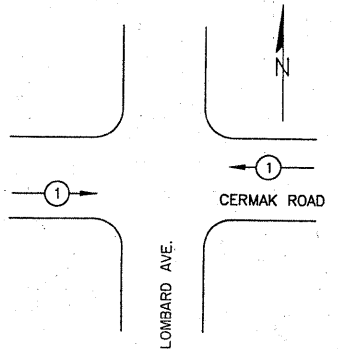
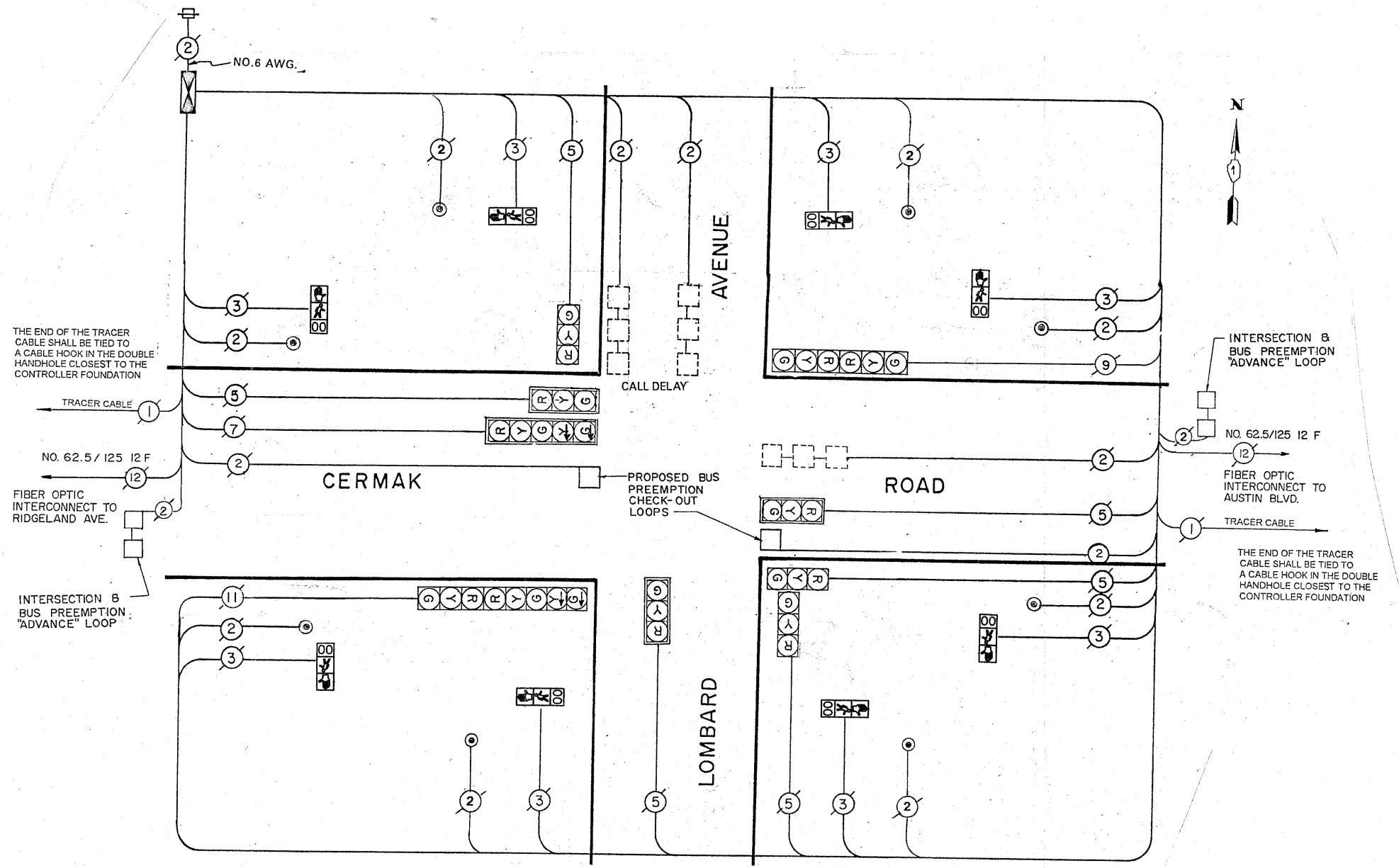


BUS PREEMPTION SEQUENCE NOTES FOR DUAL ENTRY OPERATION - ALL LEGS



NOTES:

- ONCE PREEMPTION HAS BEEN CALLED, TERMINATION OF A PHASE(S) SHALL BE IDENTICAL TO THE NORMAL SEQUENCES OF OPERATION'S TERMINATION OF A PHASE(S) AS DESCRIBED IN STANDARD 2393.
- CONTINUATION OR TERMINATION OF ALL RIGHT TURN OVERLAPS SHALL BE IDENTICAL TO THE NORMAL SEQUENCE OF OPERATION'S CONTINUATION OR TERMINATION OF RIGHT TURN OVERLAPS AS DESCRIBED IN THE CLEARANCE NOTES FOR RIGHT TURN OVERLAPS.
- TERMINATION OF ALL PEDESTRIAN PHASES SHALL INCLUDE A FULL FLASHING "DON'T WALK" INTERVAL.
- IF ALL RED CLEARANCE IS USED IN THE NORMAL SEQUENCE OF OPERATION, IT MUST BE DISPLAYED AFTER THE YELLOW CLEARANCE INTERVAL WHEN ENTERING OR LEAVING THE PREEMPTION SEQUENCE.



CABLE PLAN LEGEND

EXISTING	PROPOSED	DESCRIPTION
⊙	⊙	8" (200mm) TRAFFIC SIGNAL SECTION
⊙	⊙	12" (300mm) TRAFFIC SIGNAL SECTION
⊙	⊙	12" (300mm) PEDESTRIAN SIGNAL SECTION
⊙	⊙	12" (300mm) PEDESTRIAN SIGNAL SECTION WITH COUNTDOWN TIMER
⊙	⊙	CONTROLLER CABINET SERVICE INSTALLATION
⊙	⊙	TELEPHONE CONNECTION
⊙	⊙	MAGNETIC DETECTOR
⊙	⊙	VEHICLE DETECTOR, INDUCTION LOOP

⊙	⊙	EMERGENCY VEHICLE LIGHT DETECTOR
⊙	⊙	CONFIRMATION BEACON
⊙	⊙	PUSHBUTTON DETECTOR
⊙	⊙	DENOTES NUMBER OF CONDUCTORS ALL CABLE NO. 14 EXCEPT AS INDICATED ALL LOOP DETECTOR CABLE TO BE SHIELDED
⊙	⊙	GROUND CABLE IN CONDUIT NO. 6 SOLID COPPER (GREEN)
⊙	⊙	FIBER OPTIC CABLE IN CONDUIT NO. 62.5/125 MM12F SM12F
⊙	⊙	SIGNAL FACE WITH BACKPLATE "P" INDICATES PROGRAMMED HEAD

TRAFFIC SIGNAL SCHEDULE OF QUANTITIES

PAY ITEM	UNIT	QUANTITY
MAINTENANCE OF EXISTING TRAFFIC SIGNAL INSTALLATION	EACH	1
PEDESTRIAN PUSH-BUTTON	EACH	8
PEDESTRIAN SIGNAL HEAD, L.E.D. 1-FACE BRACKET MOUNTED WITH COUNTDOWN TIMER	EACH	8
REMOVE EXISTING TRAFFIC SIGNAL EQUIPMENT	EACH	1
THERMOPLASTIC PAVEMENT MARKING - LINE 12"	SQ. FT.	396
THERMOPLASTIC PAVEMENT MARKING - LINE 24"	SQ. FT.	118
THERMOPLASTIC PAVEMENT MARKING REMOVAL	SQ. FT.	500