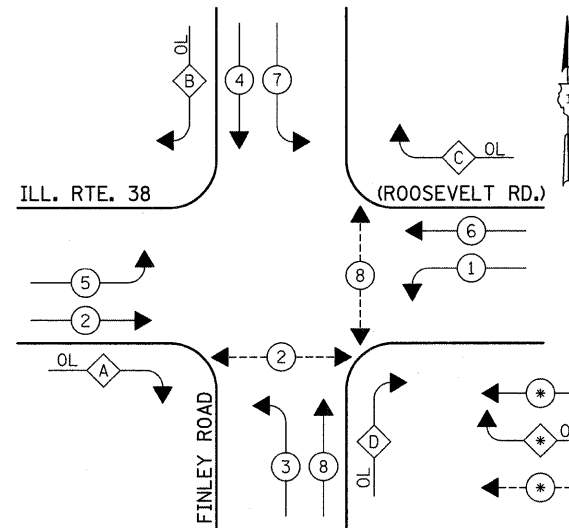


**CONTROLLER SEQUENCE**



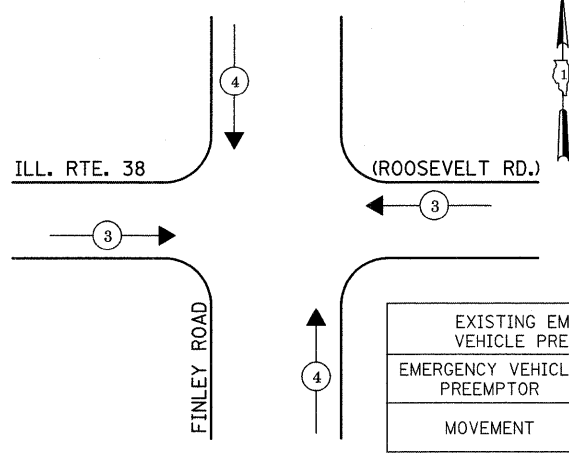
**LEGEND**  
 \* DUAL ENTRY PHASE  
 OL OVERLAP  
 PEDESTRIAN PHASE  
 \* NUMBER REFERS TO ASSOCIATED PHASE

**EXISTING PHASE DESIGNATION DIAGRAM**

**RIGHT TURN OVERLAP PHASE DESIGNATION**

OVERLAP LETTER	PERMISSIVE PHASE	PROTECTED PHASE
A	= 2 + 3	
B	= 4 + 5	
C	= 6 + 7	
D	= 8 + 1	

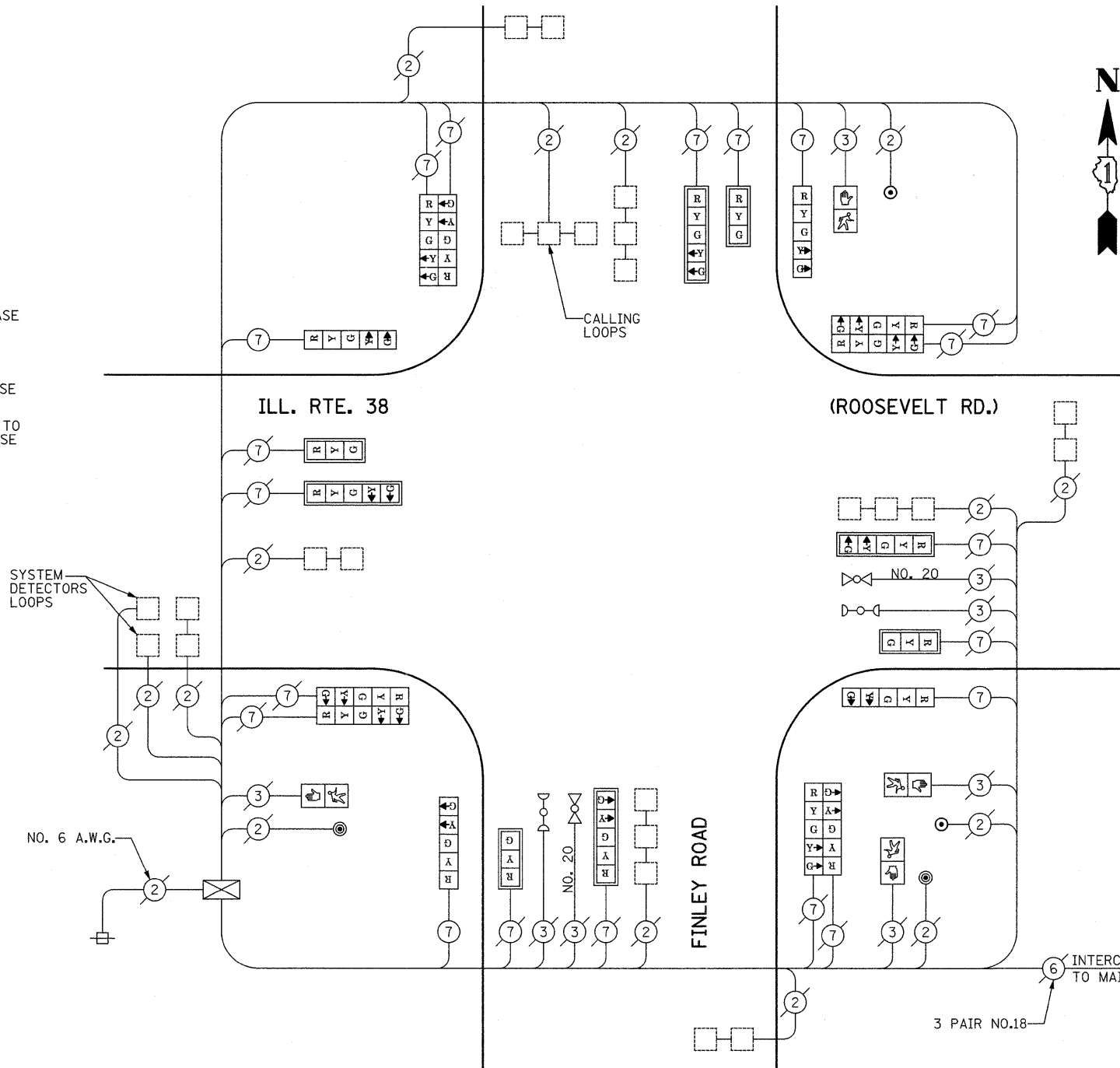
**EMERGENCY VEHICLE PREEMPTION SEQUENCE**



EXISTING EMERGENCY VEHICLE PREEMPTORS		
EMERGENCY VEHICLE PREEMPTOR	3	4
MOVEMENT	←→	↑↓

**SCHEDULE OF QUANTITIES**

QUANTITY	UNIT	ITEM
0.20	L SUM	TRAFFIC CONTROL AND PROTECTION STANDARD 701601
0.20	L SUM	TRAFFIC CONTROL AND PROTECTION STANDARD 701701
0.20	L SUM	TRAFFIC CONTROL AND PROTECTION STANDARD 701801
706	FOOT	ELECTRIC CABLE IN CONDUIT, SIGNAL NO. 14 7C
1	EACH	MAINTENANCE OF EXISTING TRAFFIC SIGNAL INSTALLATION
4	EACH	TRAFFIC SIGNAL POST, GALVANIZED STEEL, 16 FT
4	EACH	SIGNAL HEAD, LED, 1-FACE, 3-SECTION, MAST ARM MOUNTED
4	EACH	SIGNAL HEAD, LED, 1-FACE, 5-SECTION, BRACKET MOUNTED
4	EACH	SIGNAL HEAD, LED, 1-FACE, 5-SECTION, MAST ARM MOUNTED
4	EACH	SIGNAL HEAD, LED, 2-FACE, 5-SECTION, BRACKET MOUNTED
4	EACH	PEDESTRIAN SIGNAL HEAD, LED, 1-FACE, BRACKET MOUNTED
8	EACH	TRAFFIC SIGNAL BACKPLATE
2	EACH	PEDESTRIAN PUSH-BUTTON
1	EACH	REMOVE EXISTING TRAFFIC SIGNAL EQUIPMENT
375	FOOT	THERMOPLASTIC PAVEMENT MARKING - LINE 6"



**CABLE DIAGRAM**

THE FOLLOWING ITEMS SHALL BE REMOVED BY THE CONTRACTOR AND SHALL BE DISPOSED OF BY THEM OUTSIDE THE RIGHT-OF-WAY AT THEIR EXPENSE. THE SALVAGE VALUE OF THE REMOVED EQUIPMENT SHALL BE REFLECTED IN THE CONTRACT BID PRICE.

4	EACH	TRAFFIC SIGNAL POST, 16 FT.
8	EACH	SIGNAL HEAD, 1-FACE, 5-SECTION, MAST ARM MOUNTED
4	EACH	SIGNAL HEAD, 2-FACE, 5-SECTION, BRACKET MOUNTED
4	EACH	PEDESTRIAN SIGNAL HEAD, 1-FACE, BRACKET MOUNTED
2	EACH	PEDESTRIAN PUSH-BUTTON

**CABLE PLAN LEGEND**

EXISTING	PROPOSED	DESCRIPTION
G	G	8" (200mm) TRAFFIC SIGNAL SECTION
R	R	12" (300mm) TRAFFIC SIGNAL SECTION
W	W	12" (300mm) PEDESTRIAN SIGNAL SECTION
[Symbol]	[Symbol]	12" (300mm) PEDESTRIAN SIGNAL SECTION
[Symbol]	[Symbol]	CONTROLLER CABINET
[Symbol]	[Symbol]	SERVICE INSTALLATION
[Symbol]	[Symbol]	TELEPHONE INSTALLATION
[Symbol]	[Symbol]	VEHICLE DETECTOR, INDUCTION LOOP
[Symbol]	[Symbol]	MAGNETIC DETECTOR
[Symbol]	[Symbol]	EMERGENCY VEHICLE LIGHT DETECTOR
[Symbol]	[Symbol]	CONFIRMATION BEACON
[Symbol]	[Symbol]	PUSH-BUTTON DETECTOR
[Symbol]	[Symbol]	2 DENOTES NUMBER OF CONDUCTORS, ALL CABLE NO. 14 EXCEPT AS INDICATED. ALL LOOP DETECTOR CABLE TO BE SHIELDED.
[Symbol]	[Symbol]	1 GROUND CABLE IN CONDUIT NO.6 SOLID COPPER (GREEN)
[Symbol]	[Symbol]	24 FIBER OPTIC CABLE IN CONDUIT NO. 62.5/125 2-MM12F & SM12F
[Symbol]	[Symbol]	SIGNAL FACE WITH BACKPLATE. "P" INDICATES PROGRAMMED HEAD.
[Symbol]	[Symbol]	RAILROAD CONTROL CABINET
[Symbol]	[Symbol]	ILLUMINATED SIGN, FIBER OPTIC "NO LEFT TURN"
[Symbol]	[Symbol]	ILLUMINATED SIGN, FIBER OPTIC "NO RIGHT TURN"
H/C	H/C	GROUND ROD AT HANDHOLE, DOUBLE HANDHOLE, OR CONTROLLER
P	P	GROUND ROD AT POST OR MAST ARM POLE
S	S	GROUND ROD AT ELECTRIC SERVICE INSTALLATION
[Symbol]	[Symbol]	LOCAL AND MASTER CONTROLLER
[Symbol]	[Symbol]	MICROWAVE VEHICLE SENSOR
[Symbol]	[Symbol]	UPS-BATTERY BACK-UP