

FOR INDEX OF SHEETS, SEE SHEET NO. 2

IMPROVEMENTS ARE LOCATED IN THE CITY OF ARLINGTON HEIGHTS

TRAFFIC DATA

FUNCTIONAL CLASSIFICATION: MINOR ARTERIAL

2019

IL 72 TO IL 62

ADT = 34,100

IL 62 TO CENTRAL RD

ADT = 32,300

CENTRAL RD TO THOMAS ST

ADT = 21,700

THOMAS ST TO PALATINE RD

ADT = 23,100

% TRUCKS = 5%

IL 72 TO IL 62

POSTED SPEED = 45 MPH

IL 62 TO CENTRAL RD

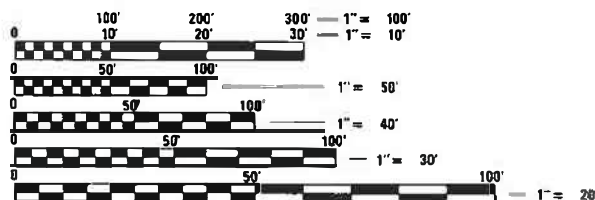
POSTED SPEED = 35 MPH

CENTRAL RD TO THOMAS ST

POSTED SPEED = 30 MPH

THOMAS ST TO PALATINE RD

POSTED SPEED = 35 MPH



FULL SIZE PLANS HAVE BEEN PREPARED USING STANDARD ENGINEERING SCALES. REDUCED SIZED PLANS WILL NOT CONFORM TO STANDARD SCALES. IN MAKING MEASUREMENTS ON REDUCED PLANS, THE ABOVE SCALES MAY BE USED.

J.U.L.I.E.
JOINT UTILITY LOCATION INFORMATION FOR EXCAVATORS
1-800-892-0123
OR 811

PROJECT ENGINEER: DAN WILGREEN, PE (847) 705-4240

PROJECT MANAGER: FAWAD AQUEEL, PE (847) 705-4247

CONTRACT NO. 62L93

STATE OF ILLINOIS
DEPARTMENT OF TRANSPORTATION

**PROPOSED
HIGHWAY PLANS**

FAU ROUTE 2626 (ARLINGTON HEIGHTS RD)
IL 72 (HIGGINS RD) TO PALATINE RD
SECTION 2020-115-RS&SW
PROJECT STP-NHPP-K9ZC(737)
SMART OVERLAY, ADA IMPROVEMENTS
COOK COUNTY

C-91-312-20

OMISSION
STA 315 + 83.10 TO
STA 317 + 50.00

OMISSION
STA 217 + 13.68 TO
STA 219 + 90.90

OMISSION
STA 157 + 00.00 TO
STA 159 + 65.51

OMISSION
STA 101 + 32.19 TO
STA 103 + 72.10

OMISSION
STA 54 + 65.96 TO
STA 77 + 44.86



LOCATION MAP
NOT TO SCALE

GROSS LENGTH = 30,179 FT. = 5.716 MILE
NET LENGTH = 26,956 FT. = 5.105 MILE

END IMPROVEMENT
STA 317 + 50.00

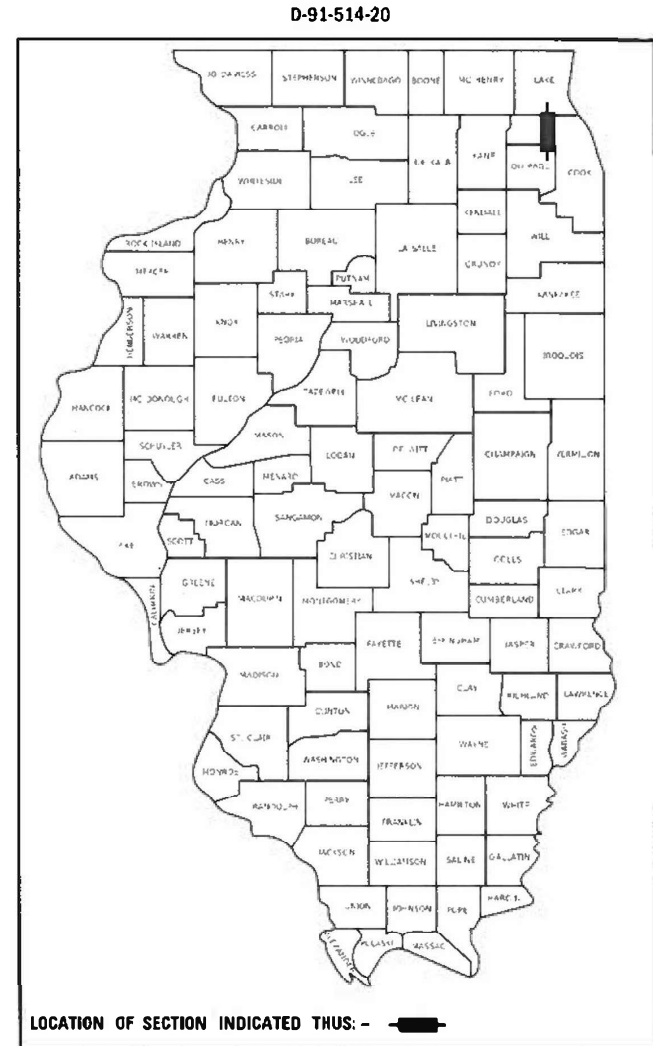
BEGIN IMPROVEMENT
STA. 15 + 65.79



Signed: [Signature]
Date: 12/01/2020
License Expires: 11/30/2021
The seal shown above is valid for Sheets 01-26, and XX-XX.

F.A.U. RTE.	SECTION	COUNTY	TOTAL SHEETS	SHEET NO.
2626	2020-115-RS&SW	COOK	129	1
		ILLINOIS	CONTRACT NO. 62L93	

* 129 + 1 = 130



EFK Moen
Civil Engineering Design

STATE OF ILLINOIS
DEPARTMENT OF TRANSPORTATION

SUBMITTED December 9, 2020
[Signature] REGIONAL ENGINEER
January 29, 2021
[Signature] ENGINEER OF DESIGN AND ENVIRONMENT
January 29, 2021
[Signature] DIRECTOR OF HIGHWAYS PROJECT IMPLEMENTATION

PRINTED BY THE AUTHORITY
OF THE STATE OF ILLINOIS

INDEX OF SHEETS

SHEET NO.	DESCRIPTION
1	COVER SHEET
2-3	INDEX, GENERAL NOTES, AND STANDARDS
4-12	SUMMARY OF QUANTITIES
13-16	TYPICAL SECTIONS
17-27	ROADWAY AND PAVEMENT MARKING PLAN
28-37	TRAFFIC SIGNAL PLAN
38-55	DETECTOR LOOP REPLACEMENT PLANS
* 56-100	ADA DETAILS
101	PD-01 DETAIL FOR SINGLE PERPENDICULAR CURB RAMPS
102	PD-03 DETAIL FOR DOUBLE PERPENDICULAR CURB RAMPS
103	PD-04 DETAIL FOR SINGLE PERPENDICULAR CURB RAMPS W/TURNING SPACE
104	PD-05 DETAIL FOR DEPRESSED CORNER CURB RAMPS
105	PD-06 DETAIL FOR PARALLEL CURB RAMPS
106	BD-08 DETAILS FRO FRAMES AND LIDS ADJUSTMENT WITH MILLING
107	BD-22 PAVEMENT PATCHING FOR HMA SURFACED PAVEMENT
108	BD-24 CURB OR CURB AND GUTTER REMOVAL AND REPLACEMENT
109	BD-32 BUTT JOINT AND HMA TAPER DETAILS
110	TC-08 ENTRANCE AND EXIT RAMP CLOSURE DETAILS
111	TC-10 TRAFFIC CONTROL AND PROTECTION FOR SIDE ROADS, INTERSECTIONS, AND DRIVEWAYS
112	TC-11 RAISED REFLECTIVE PAVEMENT MARKERS (SNOW-PLOW RESISTANT)
113	TC-13 D1 TYPICAL PAVEMENT MARKINGS
114	TC-14 TRAFFIC CONTROL AND PROTECTION AT TURN BAYS (TO REMAIN OPEN TO TRAFFIC)
115	TC-16 SHORT TERM PAVEMENT MARKINGS LETTERS AND SYMBOLS
116	TC-17 TRAFFIC CONTROL DETAILS FOR FREEWAY SHOULDER CLOSURES AND PARTIAL RAMP CLOSURES
117	TC-22 ARTERIAL ROAD INFORMATION SIGN
118-119	TC-23 TYPICAL SUPPLEMENTAL SIGNING AND PAVEMENT MARKING TREATMENT FOR RAILROAD CROSSINGS
120	TC-26 DRIVEWAY ENTRANCE SIGNING
121	TS-07 LOOP DETECTOR INSTALLATION DETAILS FOR ROADWAY RESURFACING
122-123	ILLINOIS TOLLWAY CONSTRUCTION SIGNS (STANDARD E1)
124-126	ILLINOIS TOLLWAY LANE CLOSURE DETAILS (STANDARD E2)
127	ILLINOIS TOLLWAY SHOULDER CLOSURE DETAILS (STANDARD E3)
128-129	ILLINOIS TOLLWAY TEMPORARY GORE DETAILS (STANDARD E5)

* SHEET 064A ADDED HERE 

HIGHWAY STANDARDS

000001-08	STANDARD SYMBOLS, ABBREVIATIONS AND PATTERNS
001006	DECIMAL OF AN INCH AND OF A FOOT
424001-11	PERPENDICULAR CURB RAMPS FOR SIDEWALKS
424011-04	CORNER PARALLEL CURB RAMPS FOR SIDEWALKS
424021-06	DEPRESSED CORNER FOR SIDEWALKS
424031-02	MEDIAN PEDESTRIAN CROSSINGS
442201-03	CLASS C AND CLASS D PATCHES
604001-05	FRAME AND LIDS TYPE 1
606001-07	CONCRETE CURB TYPE B AND COMBINATION CONCRETE CURB AND GUTTER
606301-04	PC CONCRETE ISLANDS AND MEDIANS
606306-04	CORRUGATED PC CONCRETE MEDIANS
701006-05	OFF-RD OPERATIONS, 2L, 2W, 15' TO 24" FROM PAVEMENT EDGE
701011-04	OFF-RD MOVING OPERATIONS, 2L, 2W, DAY ONLY
701101-05	OFF-RD OPERATIONS, MULTILANE, 15' TO 24" FROM PAVEMENT EDGE
701301-04	LANE CLOSURE, 2L, 2W, SHORT TIME OPERATIONS
701311-03	LANE CLOSURE 2L, 2W MOVING OPERATIONS-DAY ONLY
701411-09	LANE CLOSURE, MULTILANE, AT ENTRANCE OR EXIT RAMP, FOR SPEEDS ≥ 45 MPH
701421-08	LANE CLOSURE, MULTILANE, DAY OPERATIONS ONLY, FOR SPEEDS ≥ 45 MPH TO 55 MPH
701422-10	LANE CLOSURE, MULTILANE, FOR SPEEDS ≥ 45 MPH TO 55 MPH
701426-09	LANE CLOSURE, MULTILANE, INTERMITTENT OR MOVING OPERATION, FOR SPEED ≥ 45 MPH
701427-05	LANE CLOSURE, MULTILANE, INTERMITTENT OR MOVING OPERATION, FOR SPEEDS ≤ 40 MPH
701601-09	URBAN LANE CLOSURE, MULTILANE, 1W OR 2W WITH NONTRAVERSABLE MEDIAN
701602-10	URBAN LANE CLOSURE, MULTILANE, 2W WITH BIDIRECTIONAL LEFT TURN LANE
701606-10	URBAN SINGLE LANE CLOSURE, MULTILANE, 2W WITH MOUNTABLE MEDIAN
701701-10	URBAN LANE CLOSURE MULTILANE INTERSECTION
701801-06	SIDEWALK CORNER OR CROSSWALK CLOSURE
701901-08	TRAFFIC CONTROL DEVICES
720001-01	SIGN PANEL MOUNTING DETAILS
720006-04	SIGN PANEL ERECTION DETAILS
780001-05	TYPICAL PAVEMENT MARKINGS
781001-04	TYPICAL APPLICATIONS RAISED REFLECTIVE PAVEMENT MARKERS
886001-01	DETECTOR LOOP INSTALLATIONS

MODEL: Default
FILE NAME: Z:\12038.07 IDOT D1 PFB 192-007 MOT Arlington Heights Resurfacing\DCN\Design\Prelim\PlotSheets\12038.07-ht-gm-note.dgn

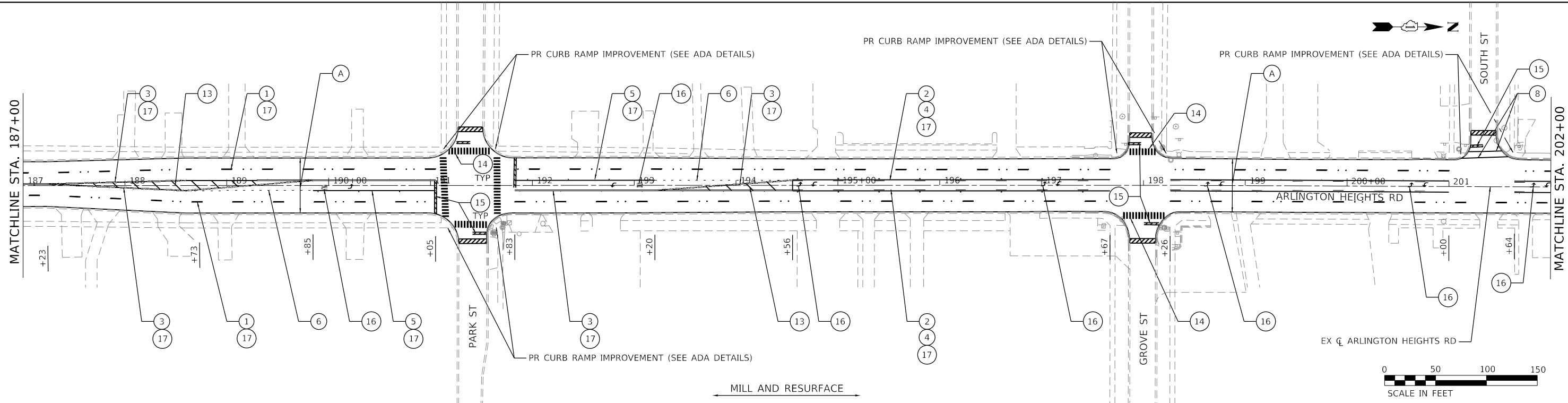
USER NAME = RGall	DESIGNED - RG	REVISED -
	DRAWN - CS	REVISED -
PLOT SCALE = 100.0000' / in.	CHECKED - JH	REVISED -
PLOT DATE = 12/9/2020	DATE -	REVISED -

**STATE OF ILLINOIS
DEPARTMENT OF TRANSPORTATION**

**ARLINGTON HEIGHTS RD
INDEX, GENERAL NOTES, STANDARDS**

SCALE: SHEET OF SHEETS STA. TO STA.

1		REVISED SHEET 2/17/2021		REV-SEP	
F.A.U. RTE.	SECTION	COUNTY	TOTAL SHEETS	SHEET NO.	
2626	2020-115-R5&SW	COOK	129	2	
			CONTRACT NO. 62L93		
			ILLINOIS FED. AID PROJECT		

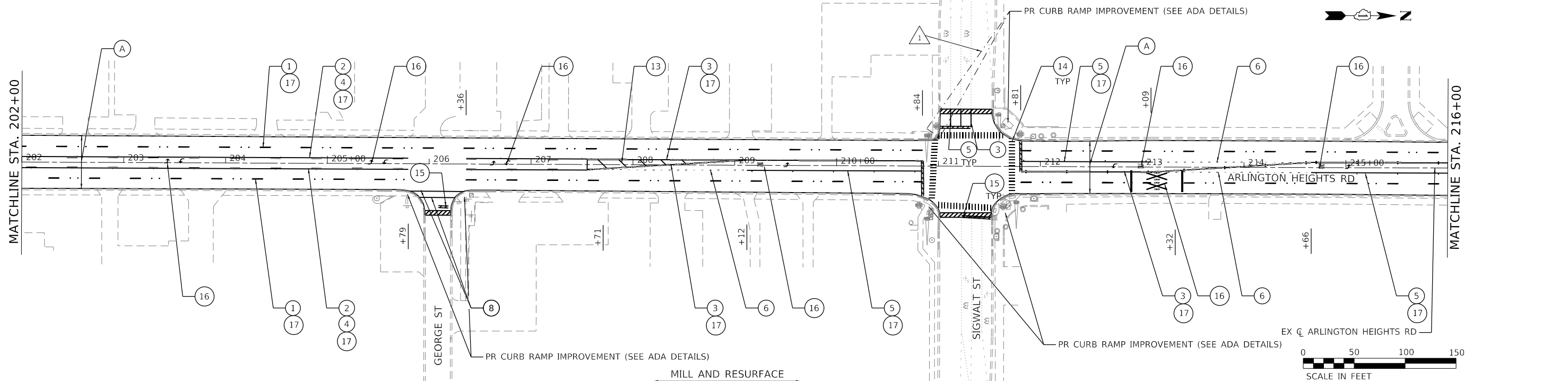


ROADWAY WORK LEGEND

- (A) HOT-MIX ASPHALT SURFACE REMOVAL, 1-3/4"
POLYMERIZED HOT-MIX ASPHALT SURFACE COURSE, IL-9.5, MIX "E", N70, 1-3/4"
- (B) MEDIAN REMOVAL PARTIAL DEPTH
POLYMERIZED HOT-MIX ASPHALT SURFACE COURSE, IL-9.5, MIX "E", N70, 1-3/4"
HOT-MIX ASPHALT BINDER COURSE, IL-9.5, N70, 1-1/2"
- HOT-MIX ASPHALT SURFACE REMOVAL - BUTT JOINT, 4.5'

PAVEMENT MARKING LEGEND

- 1 THERMOPLASTIC PAVEMENT MARKING - LINE 4" (10' - DASH, 30' - SKIP, WHITE)
- 2 THERMOPLASTIC PAVEMENT MARKING - LINE 4" (YELLOW)
- 3 THERMOPLASTIC PAVEMENT MARKING - LINE 4" (DOUBLE YELLOW, AT 11" C-C)
- 4 THERMOPLASTIC PAVEMENT MARKING - LINE 4" (10' - DASH, 30' - SKIP, YELLOW)
- 5 THERMOPLASTIC PAVEMENT MARKING - LINE 6" (WHITE)
- 6 THERMOPLASTIC PAVEMENT MARKING - LINE 6" (2' - DASH, 6' - SKIP, WHITE)
- 7 THERMOPLASTIC PAVEMENT MARKING - LINE 6" (8' - SPACING, 45° DIAGONAL, WHITE)
- 8 THERMOPLASTIC PAVEMENT MARKING - LINE 6" (PEDESTRIAN CROSSWALK)
- 9 THERMOPLASTIC PAVEMENT MARKING - LINE 8" (WHITE)
- 10 THERMOPLASTIC PAVEMENT MARKING - LINE 12" (WHITE)
- 11 NOT USED
- 12 THERMOPLASTIC PAVEMENT MARKING - LINE 12" (20' - SPACING, 45° DIAGONAL, WHITE)
- 13 THERMOPLASTIC PAVEMENT MARKING - LINE 12" (75' - SPACING, 45° DIAGONAL, YELLOW)
- 14 THERMOPLASTIC PAVEMENT MARKING - LINE 12" (SCHOOL CROSSWALK)
- 15 THERMOPLASTIC PAVEMENT MARKING - LINE 24" (WHITE)
- 16 THERMOPLASTIC PAVEMENT MARKING - LETTERS AND SYMBOLS (WHITE)
- 17 RAISED REFLECTIVE PAVEMENT MARKINGS
- 18 THERMOPLASTIC PAVEMENT MARKING - LINE 4" (WHITE)



MODEL: D:\p1\120338.07\DOT D1_P1B_192-207_MOT_Arlington_Heights_Resurfacing\DOT\Design\Plan\ArlingtonHeights\62L93-RoadPlan.dgn
 FILE NAME: 21_190338.07 DOT D1_P1B_192-207_MOT_Arlington_Heights_Resurfacing\DOT\Design\Plan\ArlingtonHeights\62L93-RoadPlan.dgn

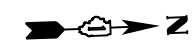
USER NAME = RGall	DESIGNED - RG	REVISED - 1 - 02/16/2021 RG
	DRAWN - CS	REVISED -
PLOT SCALE = 100.0000' / in.	CHECKED - JH	REVISED -
PLOT DATE = 2/16/2021	DATE -	REVISED -

**STATE OF ILLINOIS
DEPARTMENT OF TRANSPORTATION**

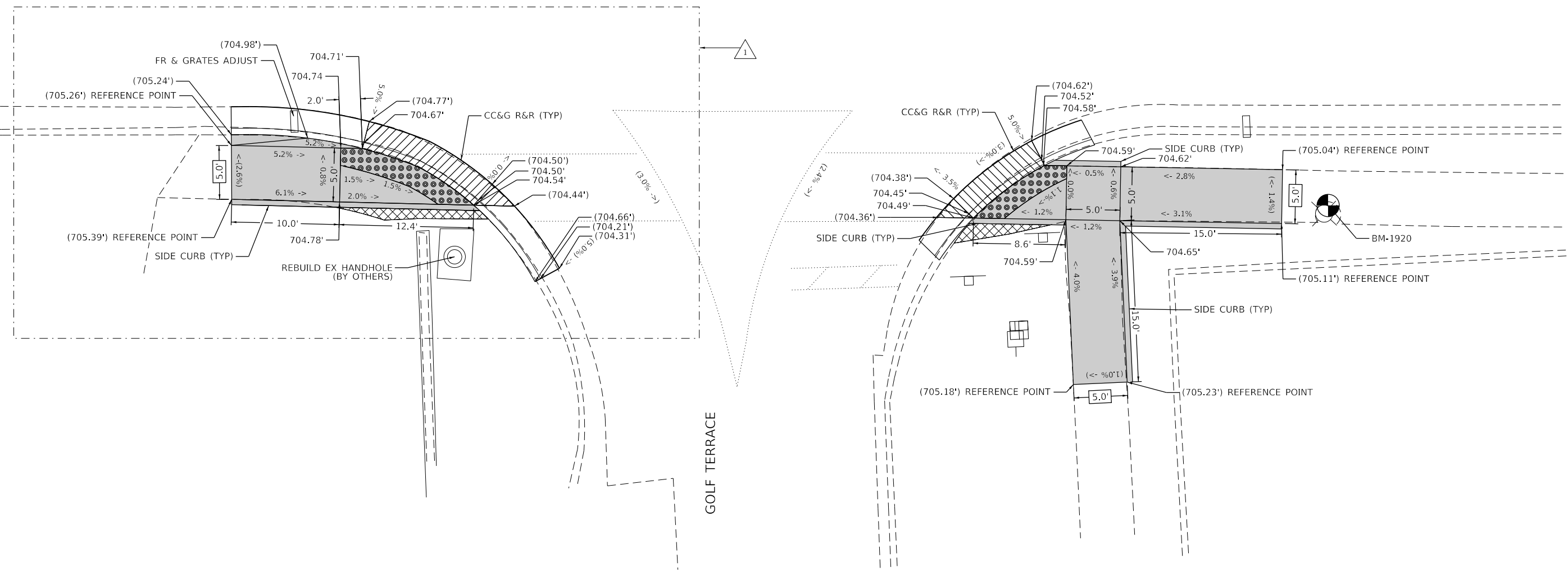
**ARLINGTON HEIGHTS RD (IL 72 TO PALATINE RD)
ROADWAY AND PAVEMENT MARKING PLAN**

F.A.U. RTE.	SECTION	COUNTY	TOTAL SHEETS	SHEET NO.
2626	2020-115-R5&SW	COOK	129	23
CONTRACT NO. 62L93				
ILLINOIS		FED. AID PROJECT		

SCALE: SHEET OF SHEETS STA. TO STA.



ARLINGTON HEIGHTS RD



- NOTES:**
- REFER TO ROADWAY AND PAVEMENT MARKING PLANS FOR PROPOSED PAVEMENT MARKINGS.
 - AT DEPRESSED CURBS, ADJACENT TO CURB RAMPS ACCESSIBLE TO THE DISABLED, THE GUTTER FLAG SLOPE SHALL BE -5% UNLESS NOTED OTHERWISE.

LEGEND

- XX.XX' EXISTING LENGTH
- () EXISTING ELEVATION / SLOPE
- PROPOSED SIDEWALK
- DETECTABLE WARNINGS
- SIDEWALK REMOVAL
REPLACE WITH TOPSOIL AND SOD
- DEPRESSED CURB AND GUTTER

REFERENCE BENCHMARK 1920 EL 705.19
 BENCHMARK: CUT SQUARE ON W OF LP BASE ± 50' N OF GOLF TERRACE
 LOCATION: NE COR OF ARLINGTON HEIGHTS RD AND GOLF TERRACE

MODEL: D:\dxf\1
 FILE NAME: 2112038.07 IDOT D1 PFB 192-007 MOT Arlington Heights Resurfacing\CD\Detail\ADA Ramp\08.dgn

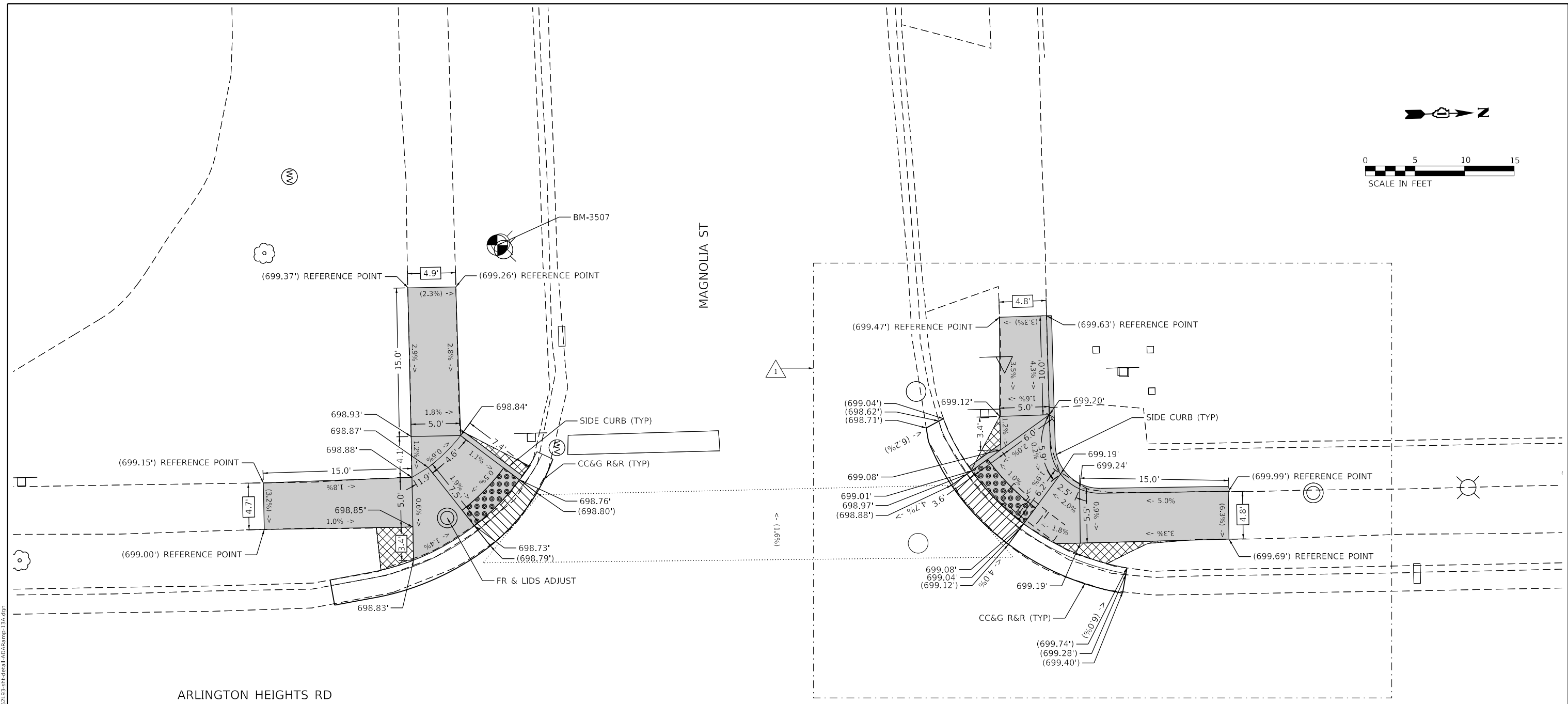
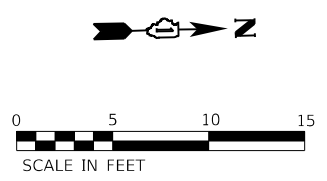
USER NAME = RGall	DESIGNED - RG	REVISED 1 - 02/16/2021 RG
	DRAWN - CS	REVISED -
PLOT SCALE = 10.0000' / in.	CHECKED - JH	REVISED -
PLOT DATE = 2/16/2021	DATE -	REVISED -

**STATE OF ILLINOIS
 DEPARTMENT OF TRANSPORTATION**

**ARLINGTON HEIGHTS RD (IL 72 TO PALATINE RD)
 ADA RAMP DETAILS**

SCALE:	SHEET	OF	SHEETS	STA.	TO	STA.
--------	-------	----	--------	------	----	------

F.A.U. RTE.	SECTION	COUNTY	TOTAL SHEETS	SHEET NO.
2626	2020-115-R5&SW	COOK	129	65
ILLINOIS FED. AID PROJECT			CONTRACT NO. 62L93	



- NOTES:**
- REFER TO ROADWAY AND PAVEMENT MARKING PLANS FOR PROPOSED PAVEMENT MARKINGS.
 - AT DEPRESSED CURBS, ADJACENT TO CURB RAMPS ACCESSIBLE TO THE DISABLED, THE GUTTER FLAG SLOPE SHALL BE -5% UNLESS NOTED OTHERWISE.

REFERENCE BENCHMARK 3507 EL 700.16'
 BENCHMARK: "X" CUT ON S BOLT OF FH
 LOCATION: SW COR OF ARLINGTON HEIGHTS RD AND MAGNOLIA ST

LEGEND

	EXISTING LENGTH
	EXISTING ELEVATION / SLOPE
	PROPOSED SIDEWALK
	DETECTABLE WARNINGS
	SIDEWALK REMOVAL REPLACE WITH TOPSOIL AND SOD
	DEPRESSED CURB AND GUTTER

MODEL: D:\dgn\11\120038.07\DOT D1.PFB.192-2007.MOT.Arlington Heights_Resurfacing\DOT\Design\Performs\Sheet\62L93.rvt; Detail: ADA Ramp-13A.dgn
 FILE NAME: 21120038.07.DOT.D1.PFB.192-2007.MOT.Arlington Heights_Resurfacing\DOT\Design\Performs\Sheet\62L93.rvt; Detail: ADA Ramp-13A.dgn

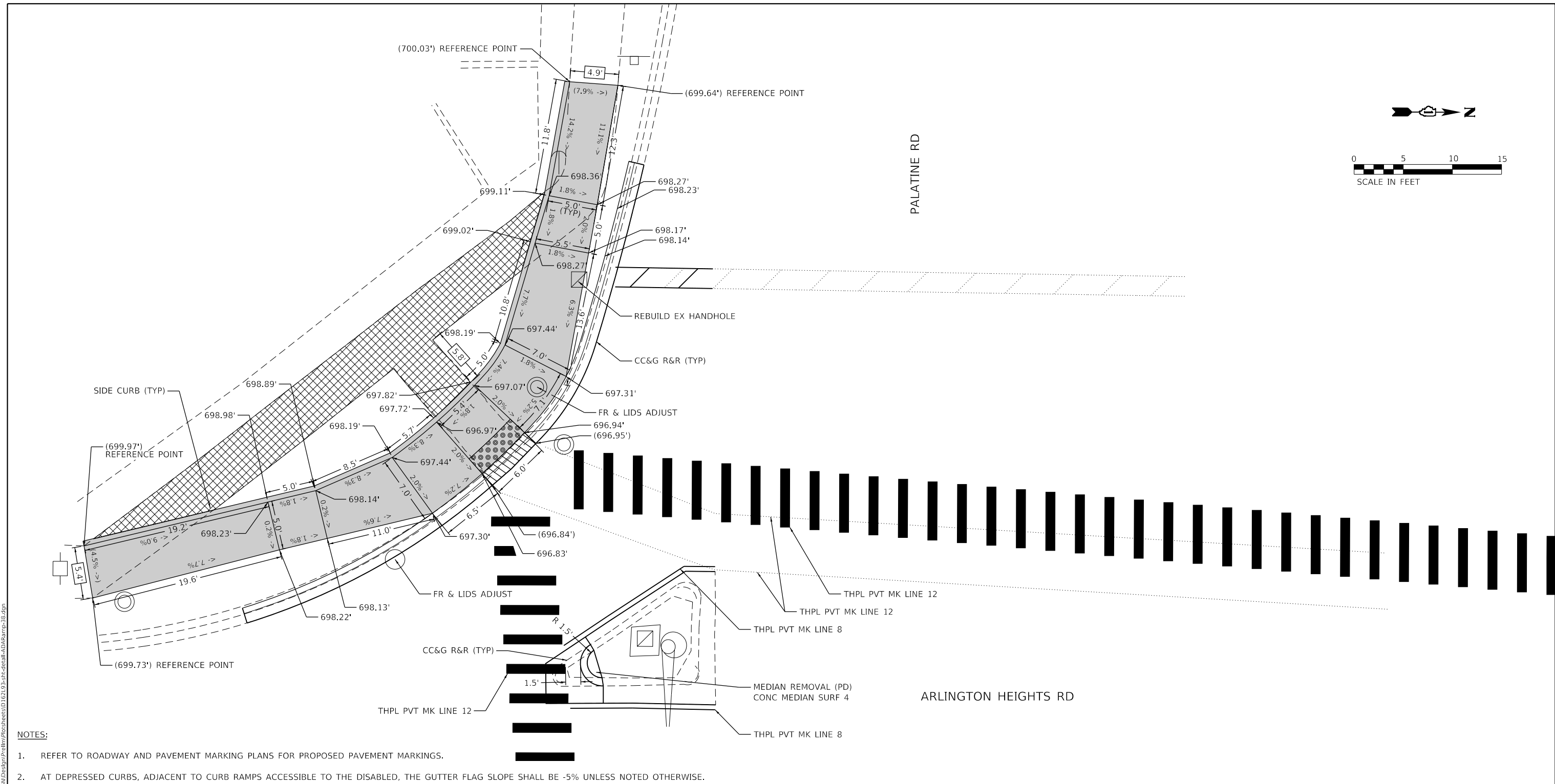
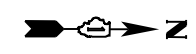
USER NAME = RGall	DESIGNED - RG	REVISED - 1 - 02/16/2021 RG
DRAWN - CS	CHECKED - JH	REVISED -
PLOT SCALE = 10.0000' / in.	DATE -	REVISED -
PLOT DATE = 2/16/2021		

STATE OF ILLINOIS
DEPARTMENT OF TRANSPORTATION

ARLINGTON HEIGHTS RD (IL 72 TO PALATINE RD)
ADA RAMP DETAILS

SCALE: SHEET OF SHEETS STA. TO STA.

F.A.U. RTE.	SECTION	COUNTY	TOTAL SHEETS	SHEET NO.
2626	2020-115-R5&SW	COOK	129	74
CONTRACT NO. 62L93				
ILLINOIS FED. AID PROJECT				



- NOTES:**
- REFER TO ROADWAY AND PAVEMENT MARKING PLANS FOR PROPOSED PAVEMENT MARKINGS.
 - AT DEPRESSED CURBS, ADJACENT TO CURB RAMPS ACCESSIBLE TO THE DISABLED, THE GUTTER FLAG SLOPE SHALL BE -5% UNLESS NOTED OTHERWISE.

REFERENCE BENCHMARK 8283 EL 697.99' (NOT SHOWN)
 BENCHMARK: SQUARE ON SW COR OF TCB
 LOCATION: SE COR OF ARLINGTON HEIGHTS RD AND PALATINE RD

LEGEND

XX.XX'	EXISTING LENGTH
()	EXISTING ELEVATION / SLOPE
	PROPOSED SIDEWALK
	DETECTABLE WARNINGS
	SIDEWALK REMOVAL REPLACE WITH TOPSOIL AND SOD
	DEPRESSED CURB AND GUTTER

1 ENTIRE SHEET REVISED

MODEL: D:\p1\120308.07 IDOT D1 PFB 192-007_MOT_Arlington_Heights_Resurfacing\CD\Drawings\Plan\ADA\ADA_Ramp-38.dgn
 FILE NAME: 21120308.07 IDOT D1 PFB 192-007_MOT_Arlington_Heights_Resurfacing\CD\Drawings\Plan\ADA\ADA_Ramp-38.dgn

USER NAME = RGall	DESIGNED - RG	REVISED - 1 02/16/2021 RG
	DRAWN - CS	REVISED -
PLOT SCALE = 10.0000" / in.	CHECKED - JH	REVISED -
PLOT DATE = 2/16/2021	DATE -	REVISED -

**STATE OF ILLINOIS
DEPARTMENT OF TRANSPORTATION**

**ARLINGTON HEIGHTS RD (IL 72 TO PALATINE RD)
ADA RAMP DETAILS**

F.A.U. RTE.	SECTION	COUNTY	TOTAL SHEETS	SHEET NO.
2626	2020-115-R5&SW	COOK	129	98
CONTRACT NO. 62L93				
SCALE:		SHEET	OF SHEETS	STA. TO STA.

ILLINOIS FED. AID PROJECT