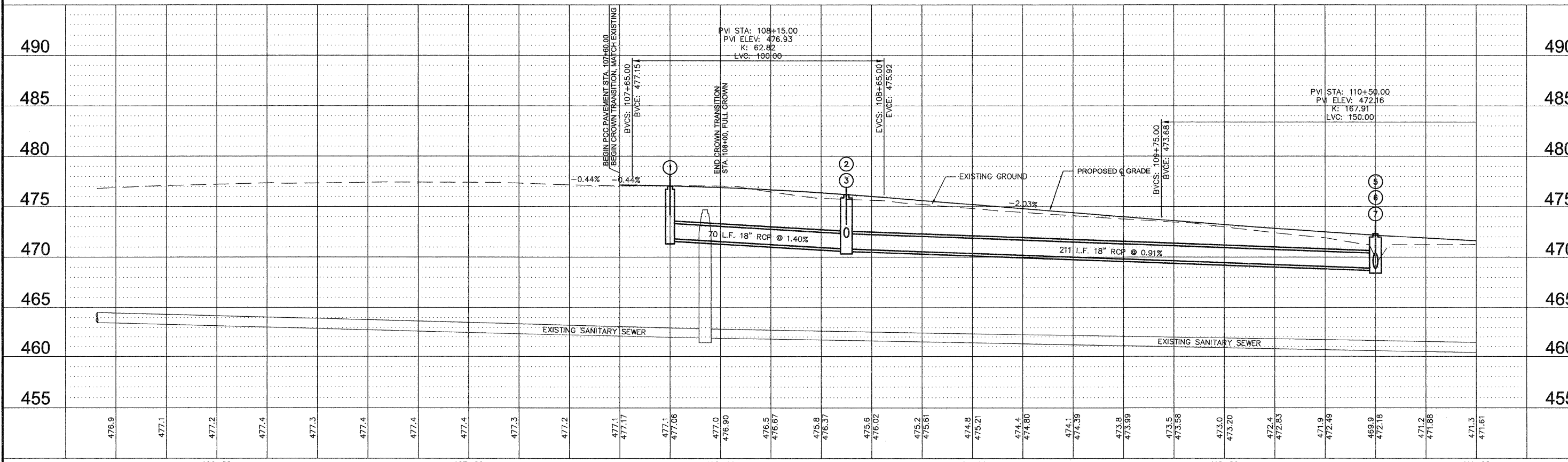
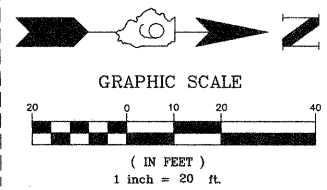


C-1

PI STA. = 108+65.18
Δ = 9°16'44" LT.
R = 1015.04'
T = 82.37'
L = 164.38'
E = N.A.
θ = N.A.
T.R. = N.A.
S.E. RUN = N.A.
P.C. STA. = 107+82.81
P.T. STA. = 109+47.20

C-2

PI STA. = 110+56.89
Δ = 9°27'55" LT.
R = 1325.00'
T = 109.69'
L = 218.89'
E = N.A.
θ = N.A.
T.R. = N.A.
S.E. RUN = N.A.
P.C. STA. = 109+47.20
P.T. STA. = 111+66.08



FILE NAME = 40039-300	USER NAME = Meyer, Tim	DESIGNED - MSF	REVISED -	STATE OF ILLINOIS DEPARTMENT OF TRANSPORTATION	ROADWAY PLAN AND PROFILE	F.A.U. RTE. 8749	SECTION 09-00130-00-RP	COUNTY JEFFERSON	TOTAL SHEETS 30	SHEET NO. 9	
PLOT SCALE = 1:1	CHECKED - DLK	REVISED -	REVISED -			SCALE: 1:20	SHEET NO. 9 OF 30 SHEETS	STA. 107+60	TO STA. 111+00	CONTRACT NO. 99411	FED. ROAD DIST. NO. 9 ILLINOIS JARRA 2009
PLOT DATE = 12/17/2009	DATE - 12/09/09	REVISED -	REVISED -								

V:\Shred\clients\40039-M1_Vernon\40039-300_Davidson Avenue North\Drawing\SHEET FILES\PLAN & PROFILE SHEETS.dwg, P&P #1, 12/17/2009 8:12:01 AM