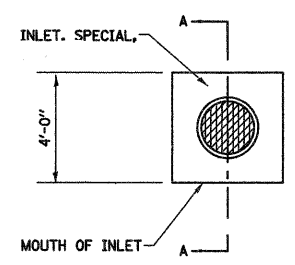
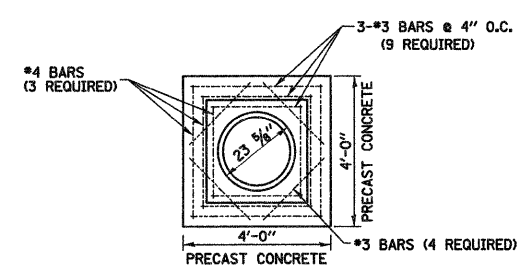


NOTE:  
REINFORCING BARS USED IN THE INLET SHALL BE #4 BARS @ 10" O.C. BOTH WAYS.

**SECTION A-A**  
N.T.S.

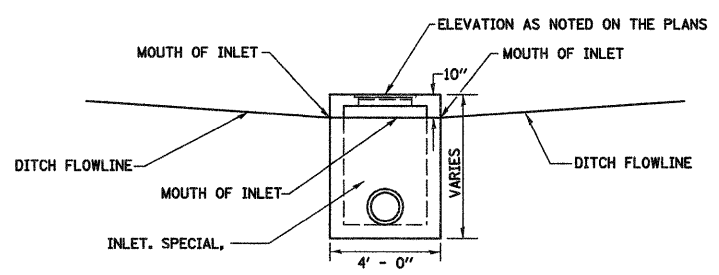


**PLAN**  
N.T.S.



**CONCRETE LID PLAN**  
N.T.S.

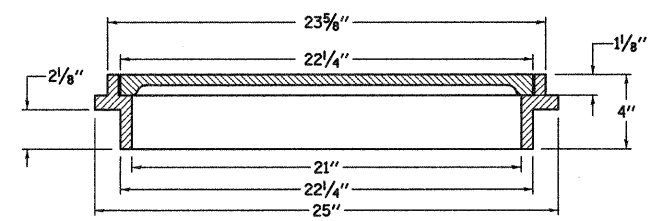
INLET WALL	
TYPE	THICKNESS
PRECAST CONCRETE	6"
CAST-IN-PLACE CONCRETE	6"



**FRONT ELEVATION**  
N.T.S.

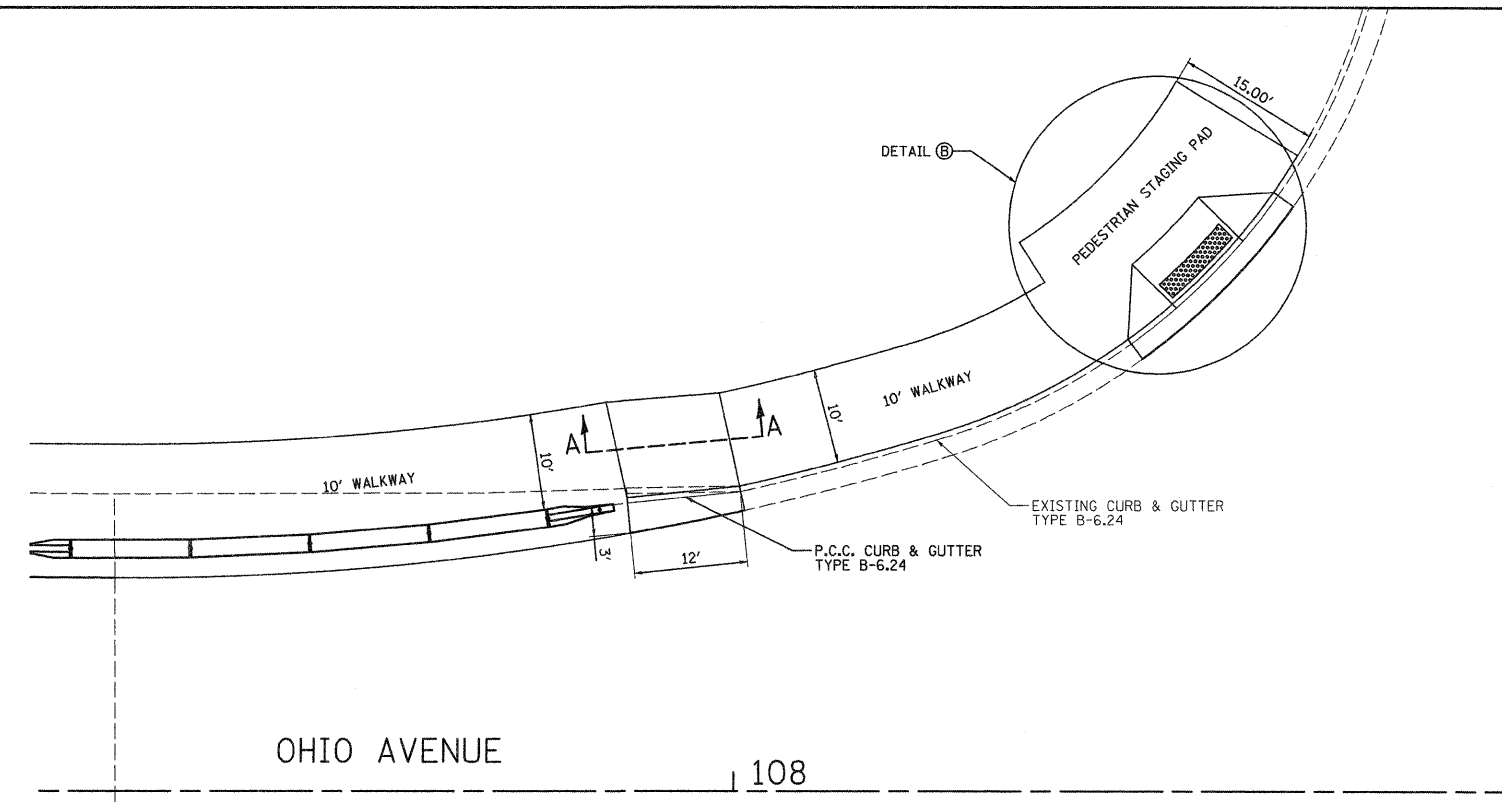
TYPE	INSIDE WIDTH	LID TYPE
INLETS, SPECIAL	3' X 3'	AREA

NOTES:  
REINFORCING BARS, CLASS "PC" CONCRETE, CAST IRON RING AND COVER, AND ALL MATERIAL AND LABOR SHALL BE INCLUDED IN THE UNIT PRICE BID FOR "INLET, SPECIAL, TYPE 1" COMPLETE AND IN PLACE.  
THE TOPS OF ALL INLETS WHICH ARE LOCATED IN CURVES SHALL BE CONSTRUCTED TO CONFORM TO THE RADIUS OF THE CURVE.  
THE INLET SHALL BE A CATCH BASIN W/FLAT LID OR SIMILAR BASED ON STRUCTURE SIZE.  
THE INLET LID AS WELL AS THE RING AND COVER USED SHALL BE ACCORDING TO THE DETAILS AS SHOWN IN THE PLANS.  
DETAILS FOR THE INLET, SPECIAL AS SHOWN ABOVE ARE BASED UPON INSIDE DIMENSIONS OF 3'X3'.



**LIGHT DUTY RING AND COVER,**  
N.T.S.

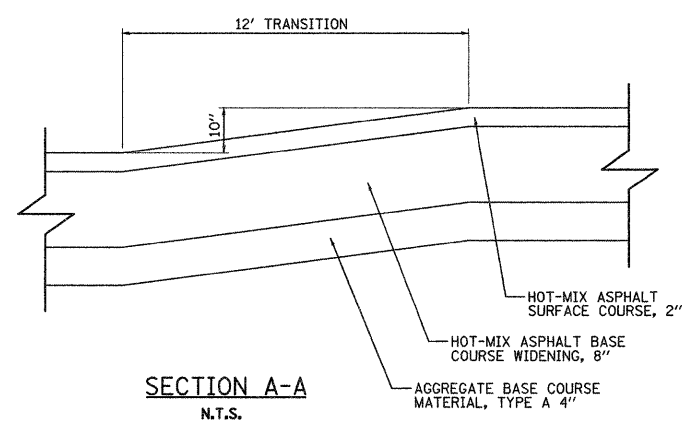
**INLETS, SPECIAL**  
N.T.S.



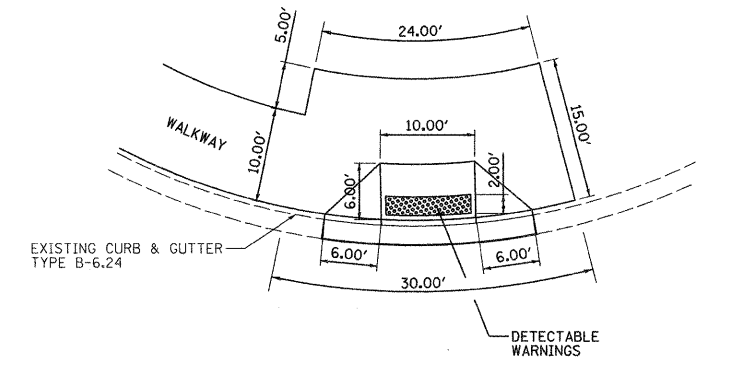
OHIO AVENUE

108

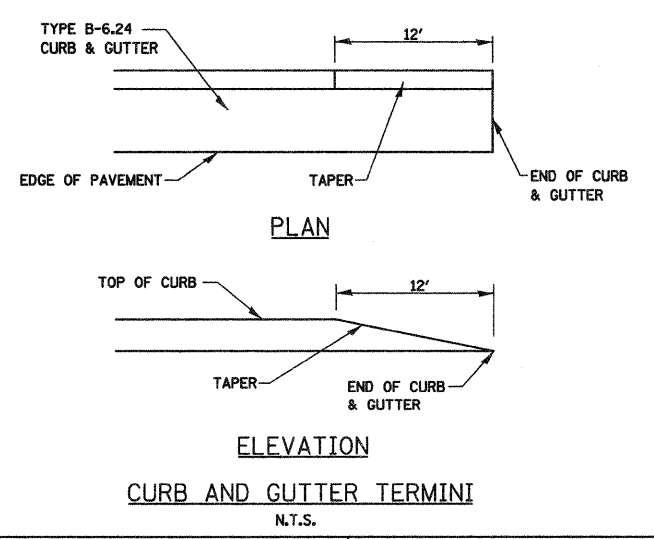
**TRANSITION DETAIL**  
N.T.S.



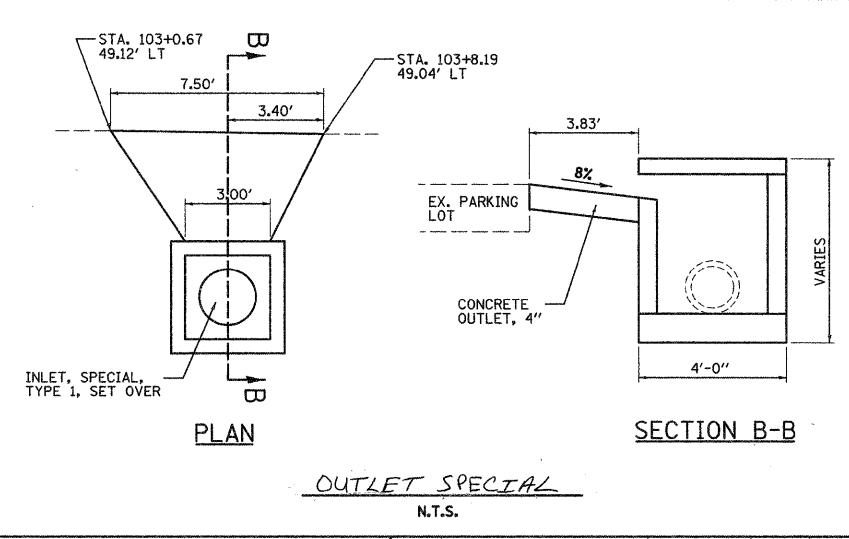
**SECTION A-A**  
N.T.S.



**DETAIL B**  
N.T.S.



**CURB AND GUTTER TERMINI**  
N.T.S.



**OUTLET SPECIAL**  
N.T.S.