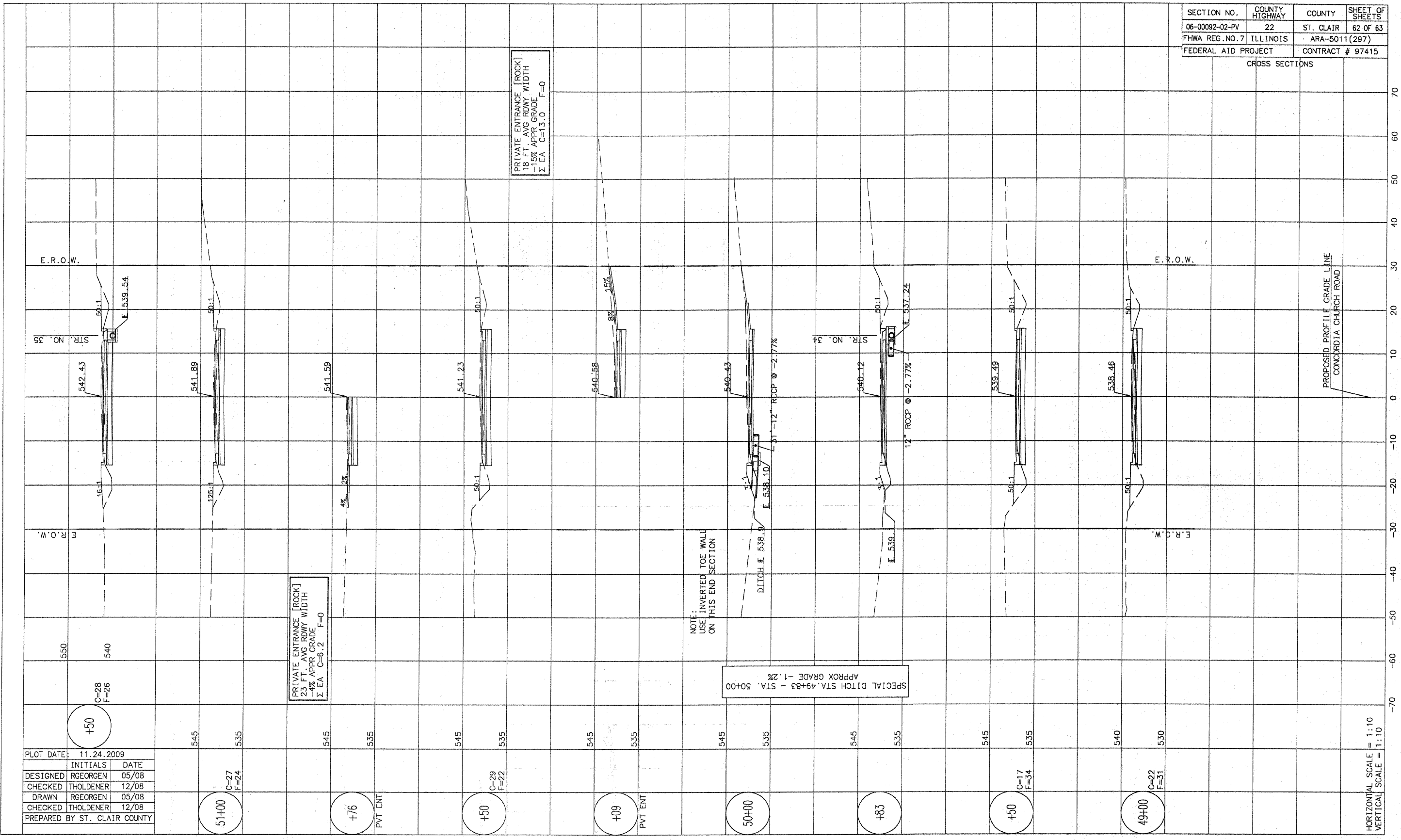


SECTION NO.	COUNTY HIGHWAY	COUNTY	SHEET OF SHEETS
06-0092-02-PV	22	ST. CLAIR	62 OF 63
FHWA REG. NO. 7	ILLINOIS	ARA-5011(297)	
FEDERAL AID PROJECT	CONTRACT # 97415		

CROSS SECTIONS



DESIGNED	RGEORGEN	05/08
CHECKED	THOLDENER	12/08
DRAWN	RGEORGEN	05/08
CHECKED	THOLDENER	12/08
PREPARED BY ST. CLAIR COUNTY		

PLOT DATE: 11.24.2009

INITIALS DATE

DESIGNED RGEORGEN 05/08

CHECKED THOLDENER 12/08

DRAWN RGEORGEN 05/08

CHECKED THOLDENER 12/08

PREPARED BY ST. CLAIR COUNTY

HORIZONTAL SCALE = 1:10  
VERTICAL SCALE = 1:10

PRIVATE ENTRANCE [ROCK]  
18 FT. AVG. RDWY WIDTH  
-15% APPR GRADE  
Σ EA C=13.0 F=0

PRIVATE ENTRANCE [ROCK]  
23 FT. AVG. RDWY WIDTH  
-4% APPR GRADE  
Σ EA C=6.2 F=0

NOTE:  
USE INVERTED TOE WALL  
ON THIS END SECTION

SPECIAL DITCH STA. 49+83 - STA. 50+00  
APPROX GRADE -1.2%

PROPOSED PROFILE GRADE LINE  
CONCORDIA CHURCH ROAD