

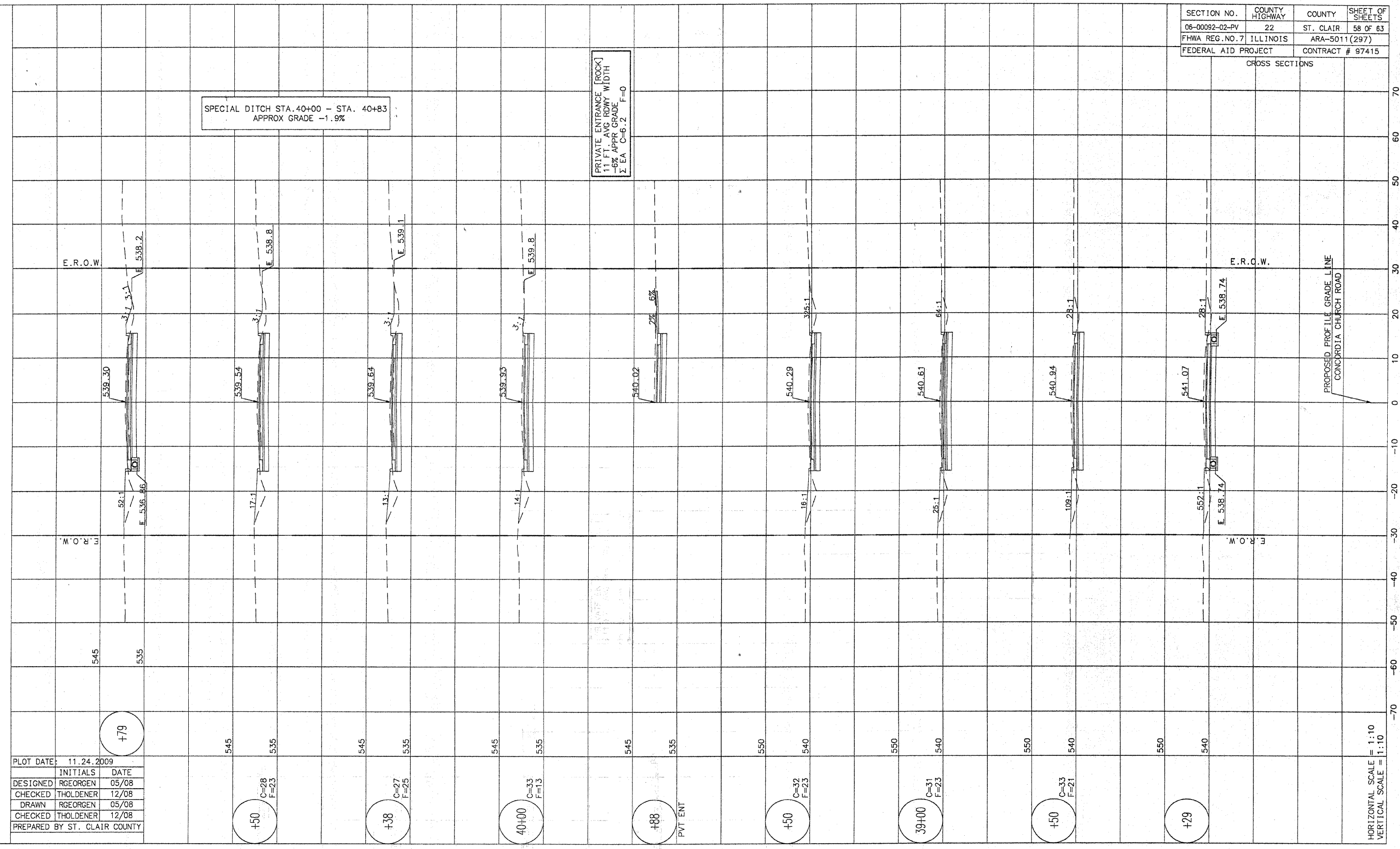
SECTION NO.	COUNTY HIGHWAY	COUNTY	SHEET OF SHEETS
06-00092-02-PV	22	ST. CLAIR	58 OF 63
FHWA REG. NO. 7	ILLINOIS	ARA-5011 (297)	
FEDERAL AID PROJECT	CONTRACT # 97415		

CROSS SECTIONS

SPECIAL DITCH STA. 40+00 - STA. 40+83  
APPROX GRADE -1.9%

PRIVATE ENTRANCE [ROCK]  
11 FT. AVG. ROWY WIDTH  
-6% APPR. GRADE F=0  
Σ EA C=6.2 F=0

DESIGNED	RGEORGEN	05/08
CHECKED	THOLDENER	12/08
DRAWN	RGEORGEN	05/08
CHECKED	THOLDENER	12/08
PREPARED BY ST. CLAIR COUNTY		



HORIZONTAL SCALE = 1:10  
VERTICAL SCALE = 1:10