

DRAWING FILE: 00092-02-PV XSEC 0-3450.dwg

PLOT DATE:

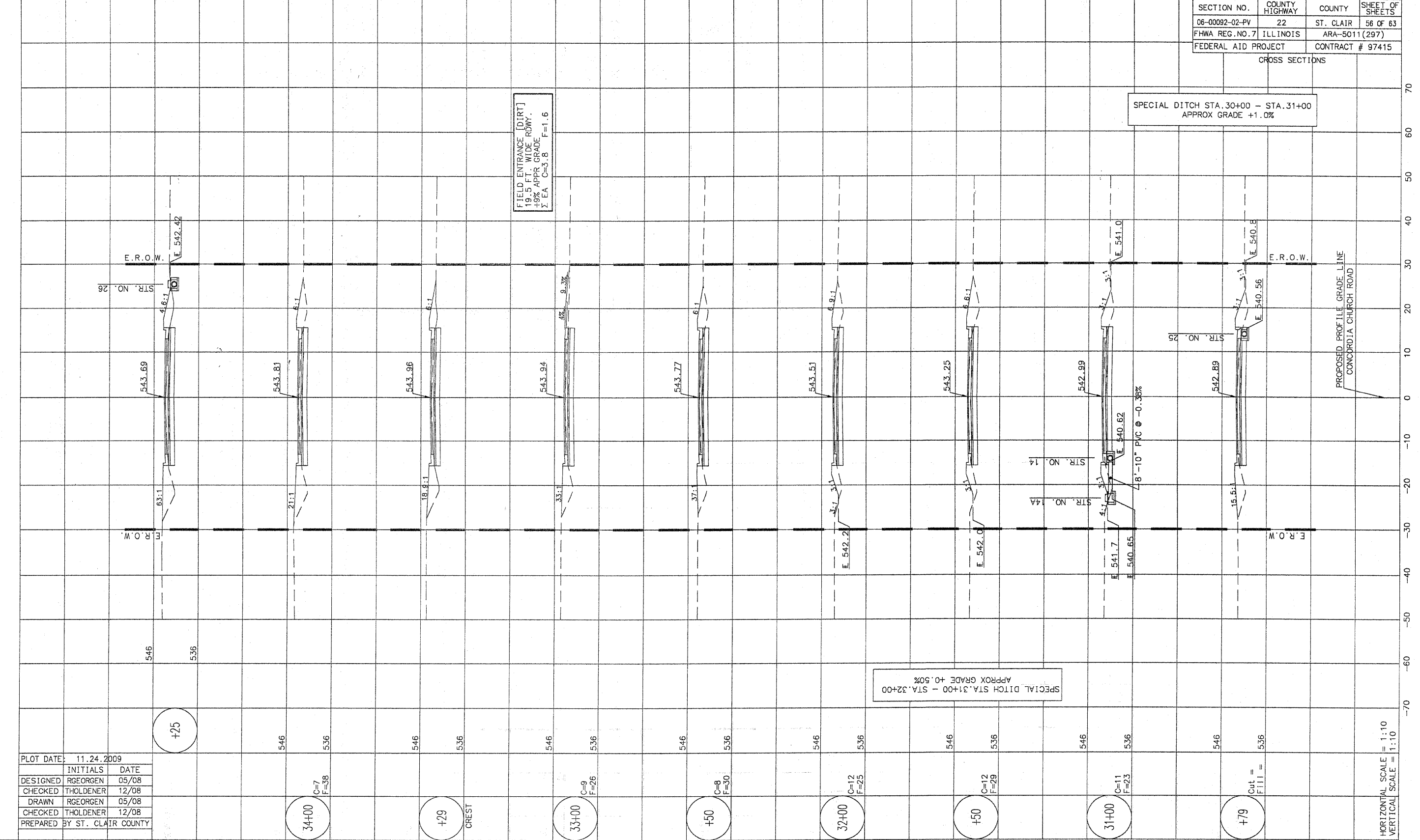
SECTION NO.	COUNTY HIGHWAY	COUNTY	SHEET OF SHEETS
06-0092-02-PV	22	ST. CLAIR	56 OF 63
FHWA REG. NO. 7	ILLINOIS	ARA-5011 (297)	
FEDERAL AID PROJECT	CONTRACT # 97415		

CROSS SECTIONS

SPECIAL DITCH STA. 30+00 - STA. 31+00  
APPROX GRADE +1.0%

SPECIAL DITCH STA. 31+00 - STA. 32+00  
APPROX GRADE +0.50%

FIELD ENTRANCE [DIRT]  
19.5 FT. WIDE ROWY.  
+9% APPR GRADE  
2' EA C=3.8 F=1.6



PLOT DATE:	11.24.2009	
INITIALS	DATE	
DESIGNED RGEORGEN	05/08	
CHECKED THOLDENER	12/08	
DRAWN RGEORGEN	05/08	
CHECKED THOLDENER	12/08	
PREPARED BY	ST. CLAIR COUNTY	

HORIZONTAL SCALE = 1:10  
VERTICAL SCALE = 1:10