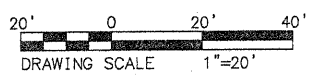
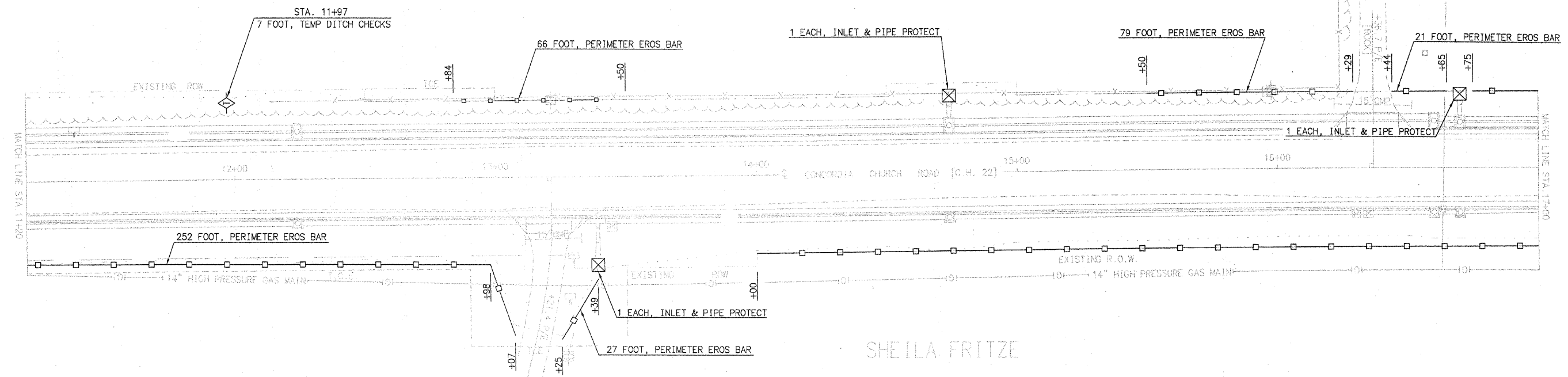


SECTION NO.	COUNTY HIGHWAY	COUNTY	SHEET OF SHEETS
06-00092-02-PV	22	ST. CLAIR	45 OF 63
FHWA REG. NO. 7	ILLINOIS		ARA-5011(297)
FEDERAL AID PROJECT	CONTRACT # 97415		

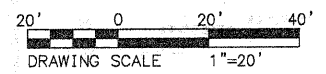
EROSION CONTROL PLAN STA. 11+20 - STA. 23+00



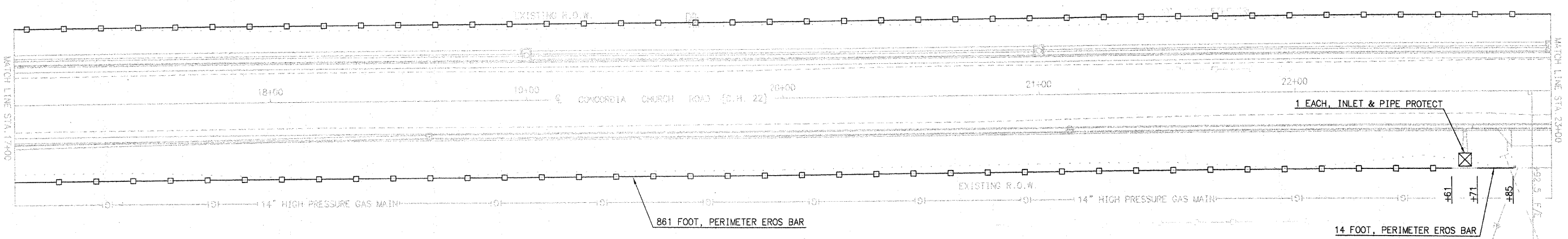
MARSDEN LEE
EISLOEFFEL



SHEILA FRITZE



MARSDEN LEE
EISLOEFFEL



SHEILA FRITZE

HEIDORN

PLOT DATE: 11.24.2009

INITIALS	DATE
DESIGNED R GEORGEN	MAY 2008
CHECKED T HOLDENER	DEC 2008
DRAWN R GEORGEN	JULY 2008
CHECKED T HOLDENER	DEC 2008

PREPARED BY ST. CLAIR COUNTY HIGHWAY DEPARTMENT
FILE NAME: 00092-02-PV SWPPP 1120-2300.dwg