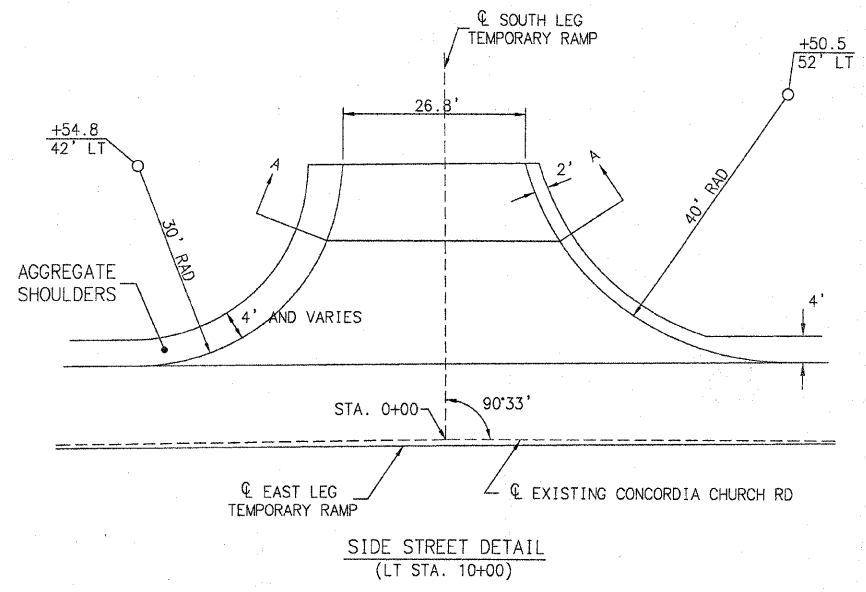
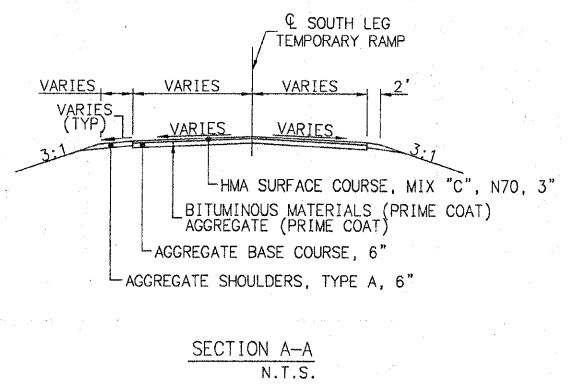


SECTION NO.	COUNTY HIGHWAY	COUNTY	SHEET OF SHEETS
06-00092-02-PV	22	ST. CLAIR	38 OF 63
FHWA REG. NO. 7	ILLINOIS	ARA-5011(297)	
FEDERAL AID PROJECT		CONTRACT # 97415	

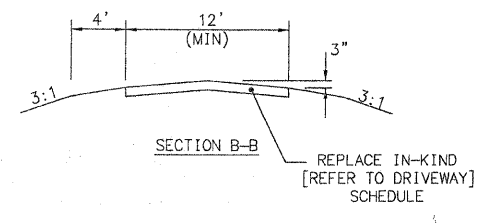
ENTRANCE / SIDE STREET / MAILBOX DETAILS



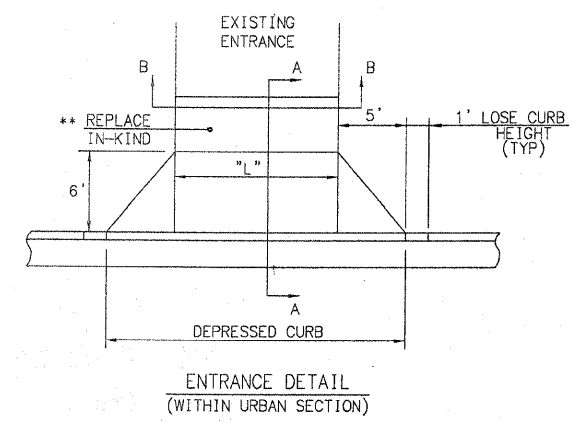
SIDE STREET DETAIL
(LT STA. 10+00)



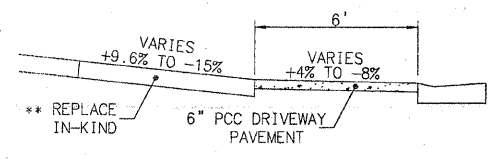
SECTION A-A
N.T.S.



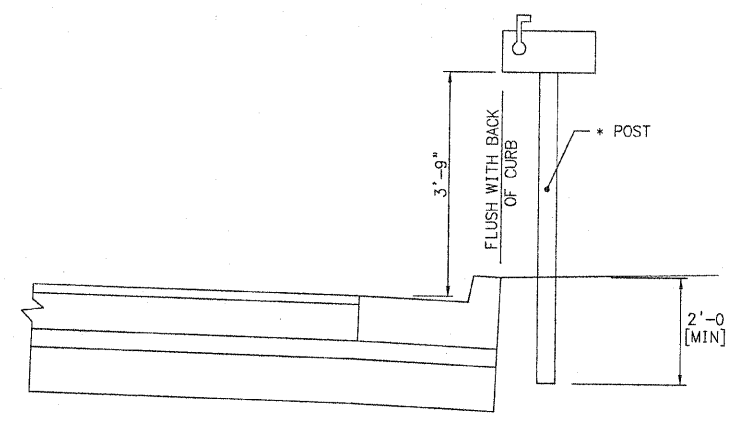
SECTION B-B
REPLACE IN-KIND
[REFER TO DRIVEWAY]
SCHEDULE



ENTRANCE DETAIL
(WITHIN URBAN SECTION)



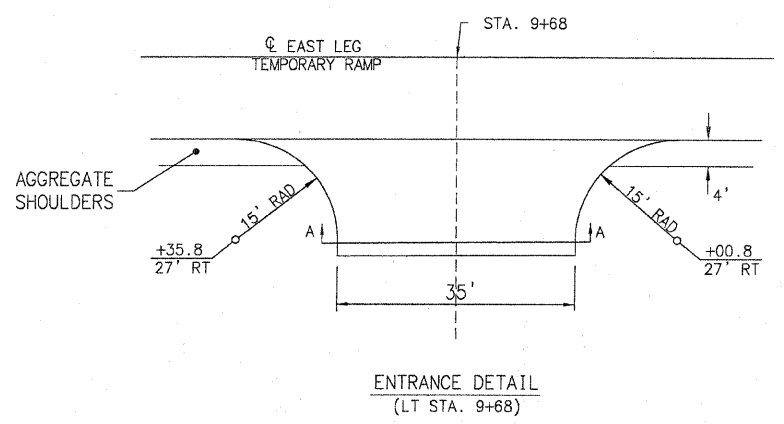
SECTION A-A



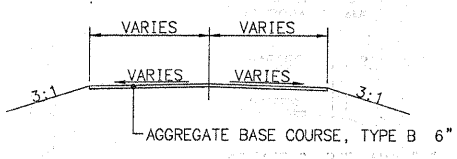
MAILBOX DETAIL

* NOTE: THE EXISTING MAILBOX SHALL BE INSPECTED BY THE R.E. PRIOR TO REMOVAL. POSTS, THAT IN THE OPINION OF THE ENGINEER, ARE JUDGED TO BE "ACCEPTABLE" THAT ARE DAMAGED BY THE CONTRACTOR SHALL BE REPLACED BY THE CONTRACTOR AT HIS COST IN ACCORDANCE WITH ART. 107.20 OF THE STANDARD SPECIFICATIONS.

POSTS THAT ARE JUDGED TO BE "UNACCEPTABLE" BASED ON THE CONDITION OF THE POST OR ON THE METHOD OF CONSTRUCTION SHALL BE REPLACED BY THE PROPERTY OWNER AT HIS/HER OWN COST.



ENTRANCE DETAIL
(LT STA. 9+68)



SECTION A-A
N.T.S.

** IF THE EXISTING SURFACE = BITUMINOUS SURFACE
THEN THE PROPOSED = 4" (COMPACTED) AGG. BASE COURSE, TYPE A (PE)
6" (COMPACTED) AGG. BASE COURSE, TYPE A (CE)
PLUS
BITUMINOUS MATERIALS PRIME COAT
AGGREGATE PRIME COAT
2" INCIDENTAL HOT MIX ASPHALT SURFACING

IF THE EXISTING SURFACE = CONCRETE
THEN THE PROPOSED = 6" PCC DRIVEWAY PAVEMENT (PE)

IF THE EXISTING SURFACE = ROCK
THEN THE PROPOSED = 4" (COMPACTED) AGG BASE COURSE, TYPE B (PE)
6" (COMPACTED) AGG BASE COURSE, TYPE B (CE)

PLOT DATE: 12.07.2009

INITIALS	DATE
DESIGNED R GEORGEN	MAY 2008
CHECKED T HOLDENER	DEC 2008
DRAWN R GEORGEN	JULY 2008
CHECKED T HOLDENER	DEC 2008

PREPARED BY ST. CLAIR COUNTY HIGHWAY DEPARTMENT

FILE NAME: 00092-02-PV ent ss details.dwg