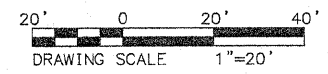


SECTION NO.	HIGHWAY	COUNTY	SHEET OF SHEETS
06-00092-02-PV	22	ST. CLAIR	37 OF 63
FHWA REG. NO. 7	ILLINOIS	ARA-5011 (297)	
FEDERAL AID PROJECT		CONTRACT # 97415	

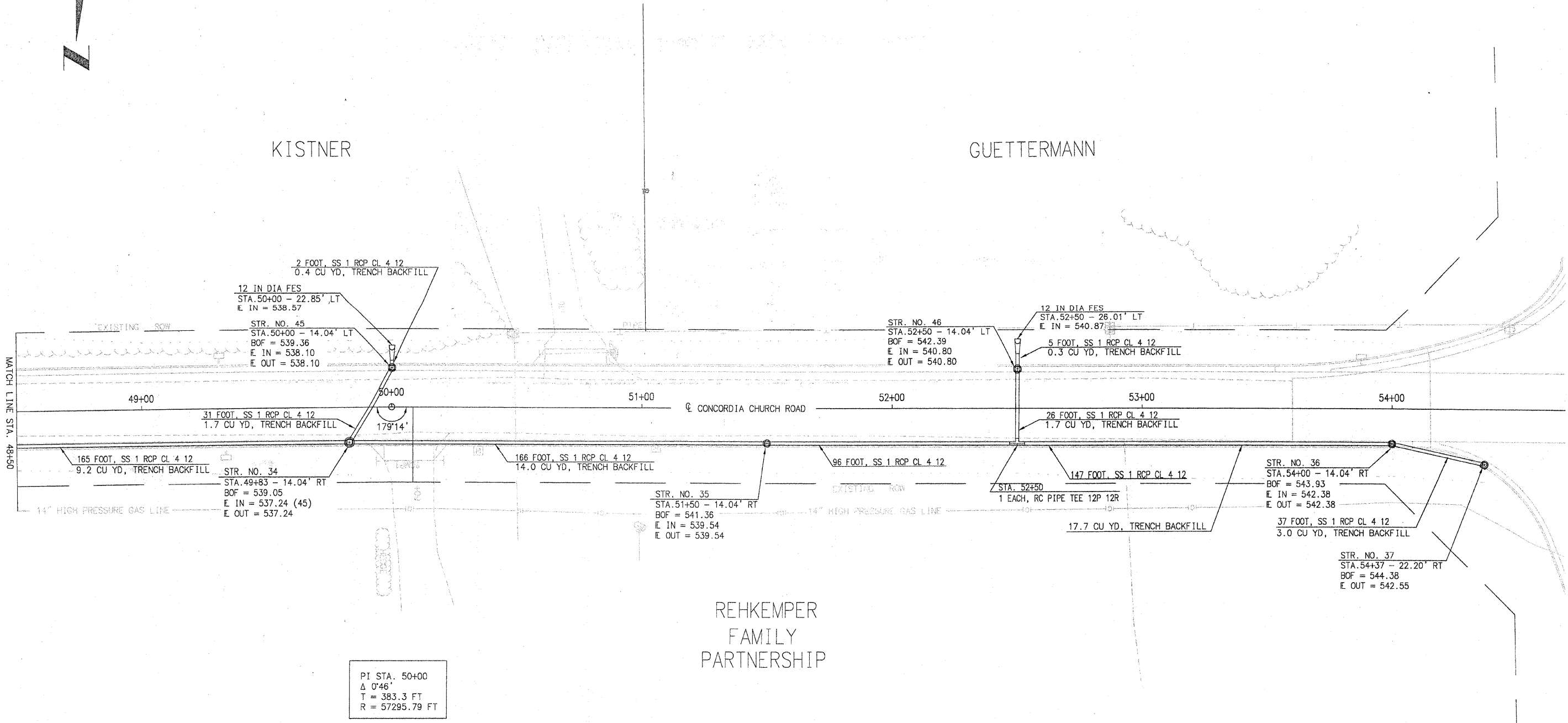
STORM SEWER PLAN VIEW STA. 48+50 - END



KISTNER

GUETTERMANN

REHKEMPER  
FAMILY  
PARTNERSHIP



PI STA. 50+00  
Δ 0°46'  
T = 383.3 FT  
R = 57295.79 FT

PLOT DATE: 11.24.2009

	INITIALS	DATE
DESIGNED	R GEORGEN	MAY 2008
CHECKED	T HOLDENER	DEC 2008
DRAWN	R GEORGEN	JULY 2008
CHECKED	T HOLDENER	DEC 2008

PREPARED BY ST. CLAIR COUNTY  
HIGHWAY DEPARTMENT

FILE NAME: 00092-02-PV SS PLN 4850-5437.dwg

BOF: BOTTOM OF FRAME ELEVATION (SEE DETAIL ON PREVIOUS SHEET)