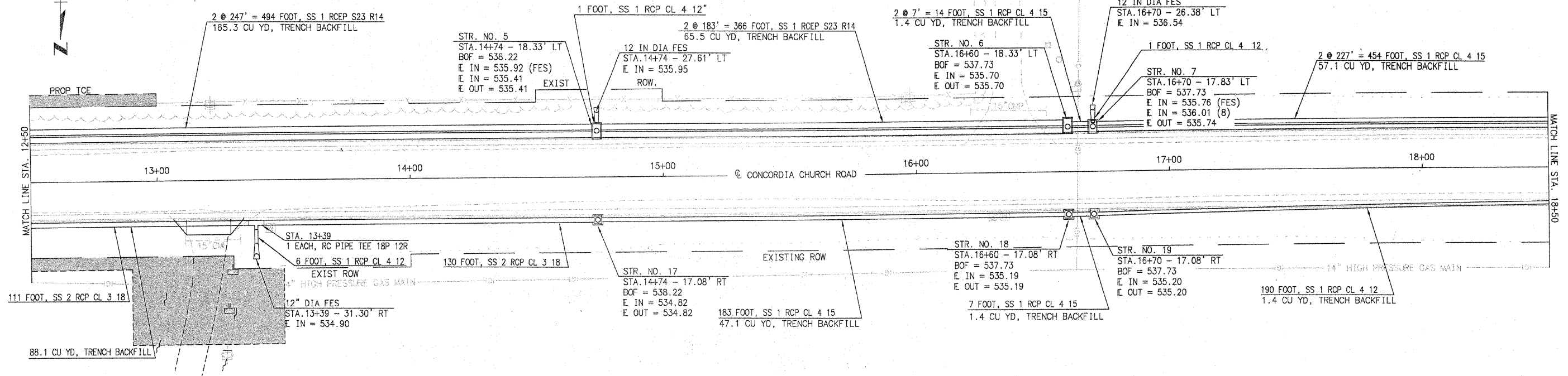


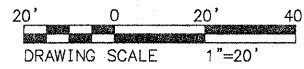
MARSDEN LEE EISLOEFFEL

SECTION NO.	HIGHWAY	COUNTY	SHEET OF SHEETS
06-00092-02-PV	22	ST. CLAIR	34 OF 63
FHWA REG.NO. 7	ILLINOIS	ARA-5011 (297)	
FEDERAL AID PROJECT	CONTRACT # 97415		

STORM SEWER PLAN VIEW STA. 12+50 - STA. 24+50

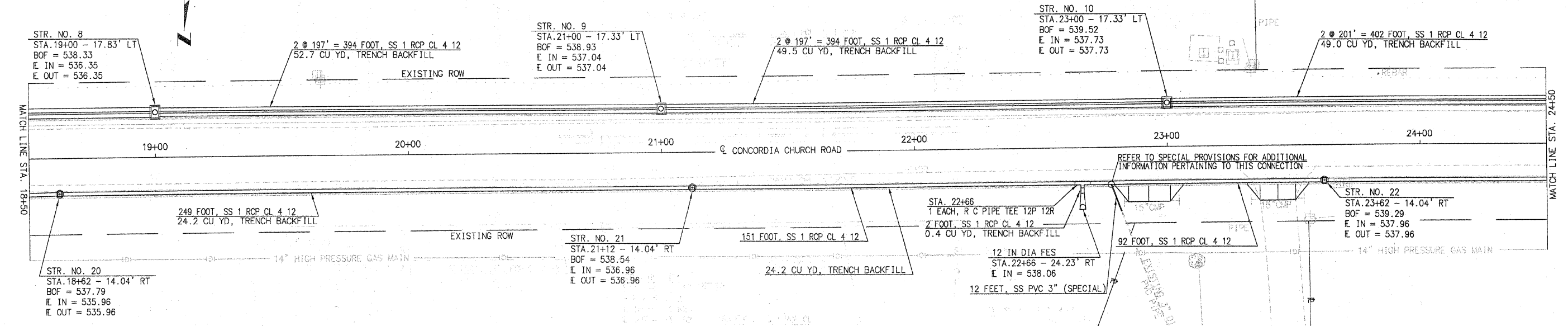


SHEILA FRITZE



MARSDEN LEE EISLOEFFEL

REHKEMPER FAMILY PARTNERSHIP



SHEILA FRITZE

POOLE

HEIDORN

PLOT DATE: 11.24.2009

DESIGNED	R GEORGEN	MAY 2008
CHECKED	T HOLDENER	DEC 2008
DRAWN	R GEORGEN	JULY 2008
CHECKED	T HOLDENER	DEC 2008

PREPARED BY ST. CLAIR COUNTY HIGHWAY DEPARTMENT

FILE NAME: 00092-02-PV SS PLN 1250-2450.dwg

BOF: BOTTOM OF FRAME ELEVATION (SEE DETAIL ON PREVIOUS SHEET)