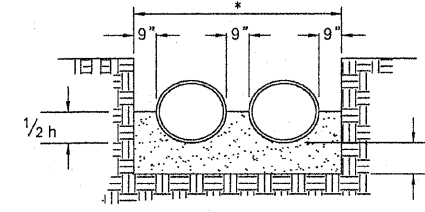


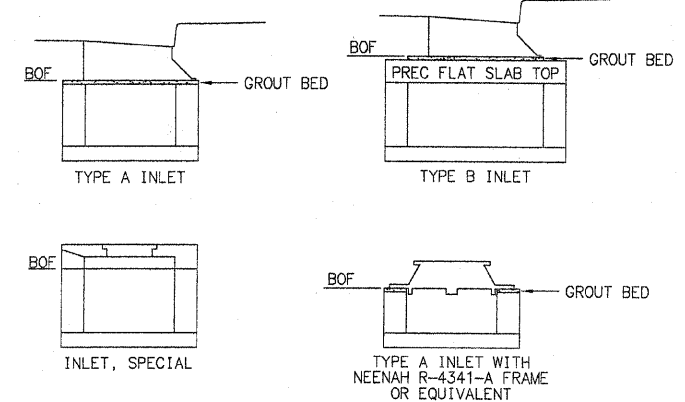
SECTION NO.	HIGHWAY	COUNTY	SHEET OF SHEETS
06-0092-02-PV	22	ST. CLAIR	33 OF 63
FHWA REG. NO. 7	ILLINOIS	ARA-5011(297)	
FEDERAL AID PROJECT	CONTRACT # 97415		

STORM SEWER PLAN VIEW BEGIN - STA. 12+50

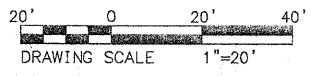


TYPICAL TRENCH DETAIL
N.T.S.

* : AS PER ARTICLE 550.04 OF THE STD. SPECIFICATIONS.



TYPICAL DETAIL OF BOTTOM OF FRAME ELEVATION
N.T.S.

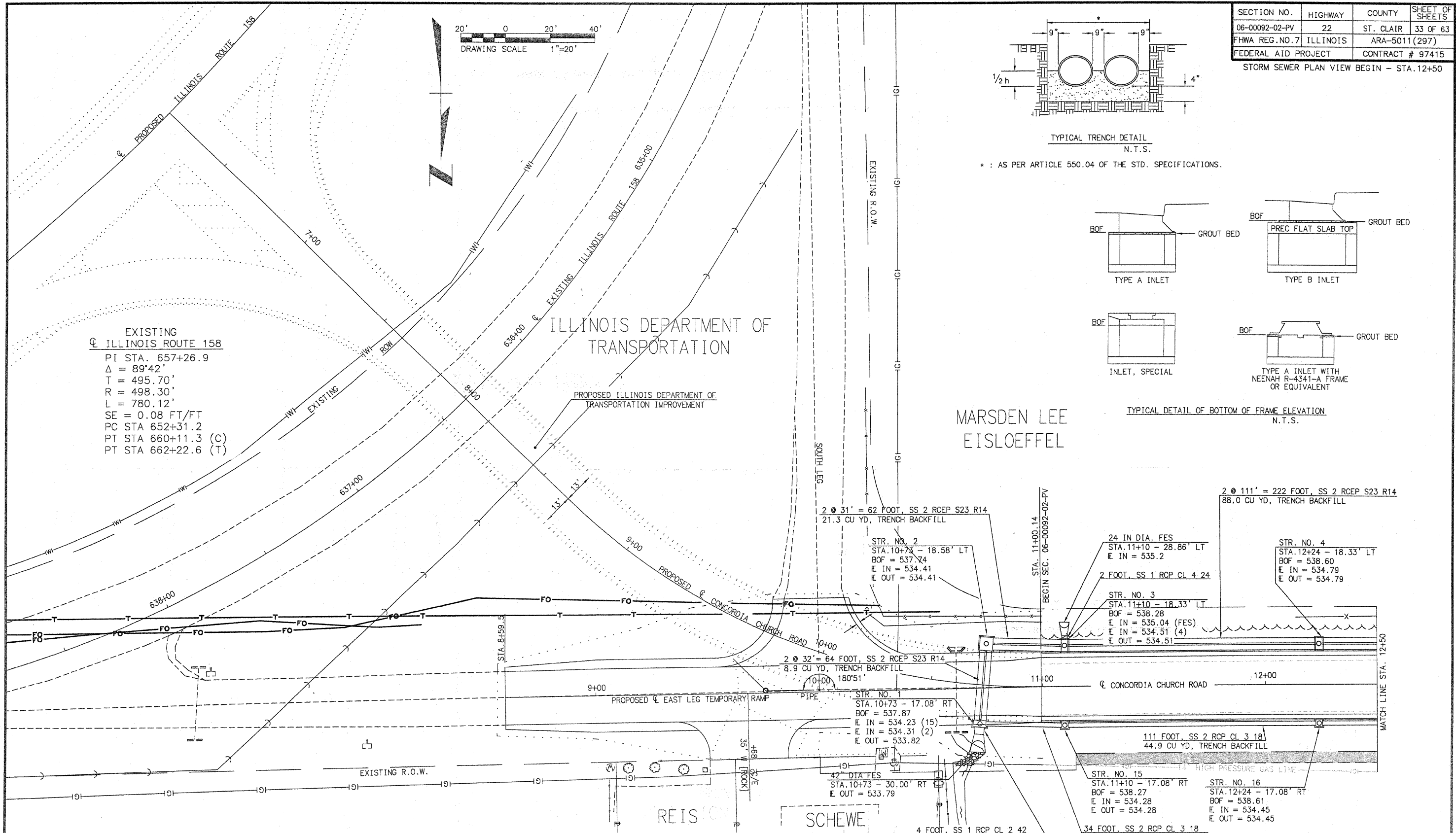


EXISTING
ILLINOIS ROUTE 158
PI STA. 657+26.9
Δ = 89°42'
T = 495.70'
R = 498.30'
L = 780.12'
SE = 0.08 FT/FT
PC STA 652+31.2
PT STA 660+11.3 (C)
PT STA 662+22.6 (T)

ILLINOIS DEPARTMENT OF
TRANSPORTATION

PROPOSED ILLINOIS DEPARTMENT OF
TRANSPORTATION IMPROVEMENT

MARSDEN LEE
EISLOEFFEL



2 @ 31" = 62 FOOT, SS 2 RCEP S23 R14
21.3 CU YD, TRENCH BACKFILL

STR. NO. 2
STA. 10+73 - 18.58' LT
BOF = 537.74
E IN = 534.41
E OUT = 534.41

24 IN DIA. FES
STA. 11+10 - 28.86' LT
E IN = 535.2

2 FOOT, SS 1 RCP CL 4 24
STR. NO. 3
STA. 11+10 - 18.33' LT
BOF = 538.28
E IN = 535.04 (FES)
E IN = 534.51 (4)
E OUT = 534.51

2 @ 111" = 222 FOOT, SS 2 RCEP S23 R14
88.0 CU YD, TRENCH BACKFILL

STR. NO. 4
STA. 12+24 - 18.33' LT
BOF = 538.60
E IN = 534.79
E OUT = 534.79

2 @ 32" = 64 FOOT, SS 2 RCEP S23 R14
8.9 CU YD, TRENCH BACKFILL

STR. NO. 1
STA. 10+73 - 17.08' RT
BOF = 537.87
E IN = 534.23 (15)
E IN = 534.31 (2)
E OUT = 533.82

42" DIA FES
STA. 10+73 - 30.00' RT
E OUT = 533.79

111 FOOT, SS 2 RCP CL 3 18
44.9 CU YD, TRENCH BACKFILL

STR. NO. 15
STA. 11+10 - 17.08' RT
BOF = 538.27
E IN = 534.28
E OUT = 534.28

STR. NO. 16
STA. 12+24 - 17.08' RT
BOF = 538.61
E IN = 534.45
E OUT = 534.45

4 FOOT, SS 1 RCP CL 2 42

34 FOOT, SS 2 RCP CL 3 18
11.1 CU YD, TRENCH BACKFILL

PLOT DATE: 11.24.2009

INITIALS	DATE
DESIGNED R GEORGEN	MAY 2008
CHECKED T HOLDENER	DEC 2008
DRAWN R GEORGEN	JULY 2008
CHECKED T HOLDENER	DEC 2008

SHEILA FRITZE

SHEILA FRITZE

NOTE: THE STATIONING SHOWN FOR THE STORM SEWER APPURTENANCES (i.e. MANHOLES, INLETS, PIPES, ETC.) REFERS TO THE PROPOSED CONCORDIA CHURCH C AND NOT THE EAST LEG TEMPORARY RAMP C.

PREPARED BY ST. CLAIR COUNTY HIGHWAY DEPARTMENT
FILE NAME: 00092-02-PV SS PLN BEGIN-1250.dwg