

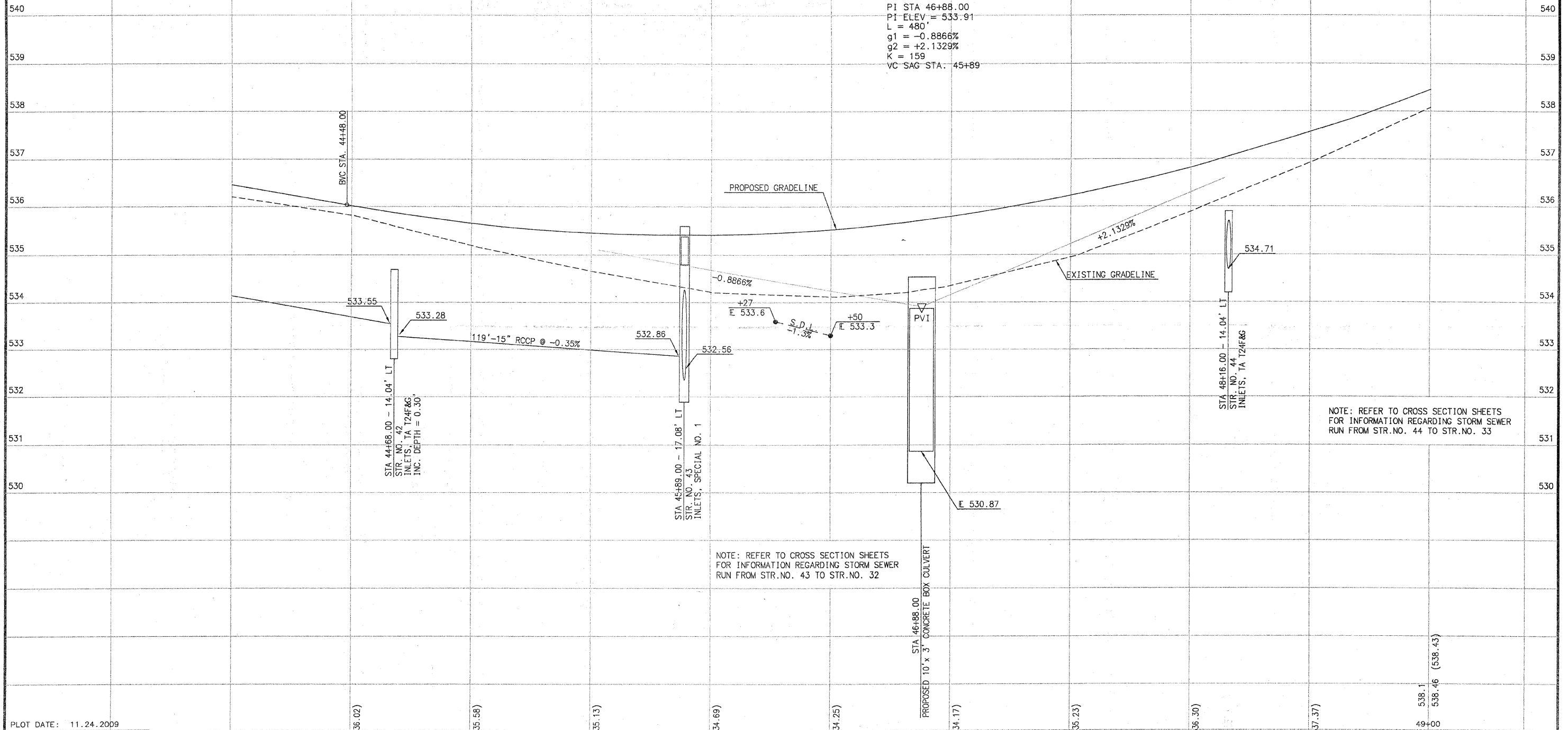
SCALE:
1" = 20' HORIZ.
1" = 1' VERT.

SECTION NO.	COUNTY HIGHWAY	COUNTY	SHEET OF SHEETS
06-00092-02-PV	22	ST. CLAIR	31 OF 63
FHWA REG. NO. 7	ILLINOIS	ARA-5011 (297)	
FEDERAL AID PROJECT	CONTRACT # 97415		

PROFILE VIEW - LEFT SIDE

PROPOSED VERTICAL CURVE DATA

PI STA 46+88.00
PI ELEV = 533.91
L = 480'
g1 = -0.8866%
g2 = +2.1329%
K = 159
VC SAG STA: 45+89



NOTE: REFER TO CROSS SECTION SHEETS FOR INFORMATION REGARDING STORM SEWER RUN FROM STR. NO. 44 TO STR. NO. 33

NOTE: REFER TO CROSS SECTION SHEETS FOR INFORMATION REGARDING STORM SEWER RUN FROM STR. NO. 43 TO STR. NO. 32

PLOT DATE: 11.24.2009

	INITIALS	DATE
DESIGNED	R GEORGEN	04/08
CHECKED	T HOLDENER	12/08
DRAWN	R GEORGEN	04/08
CHECKED	T HOLDENER	12/08

PREPARED BY ST. CLAIR COUNTY HIGHWAY DEPARTMENT

536.2	536.46	535.8	536.02 (536.02)	535.2	535.66 (535.58)	534.7	535.46 (535.13)	534.2	535.42 (534.69)	534.1	535.53 (534.25)	534.4	535.80 (534.17)	535.0	536.23 (535.23)	535.9	536.82 (536.30)	536.9	537.56 (537.37)	538.1	538.46 (538.43)
44+00				45+00				46+00				47+00				48+00					49+00

LEFT SIDE