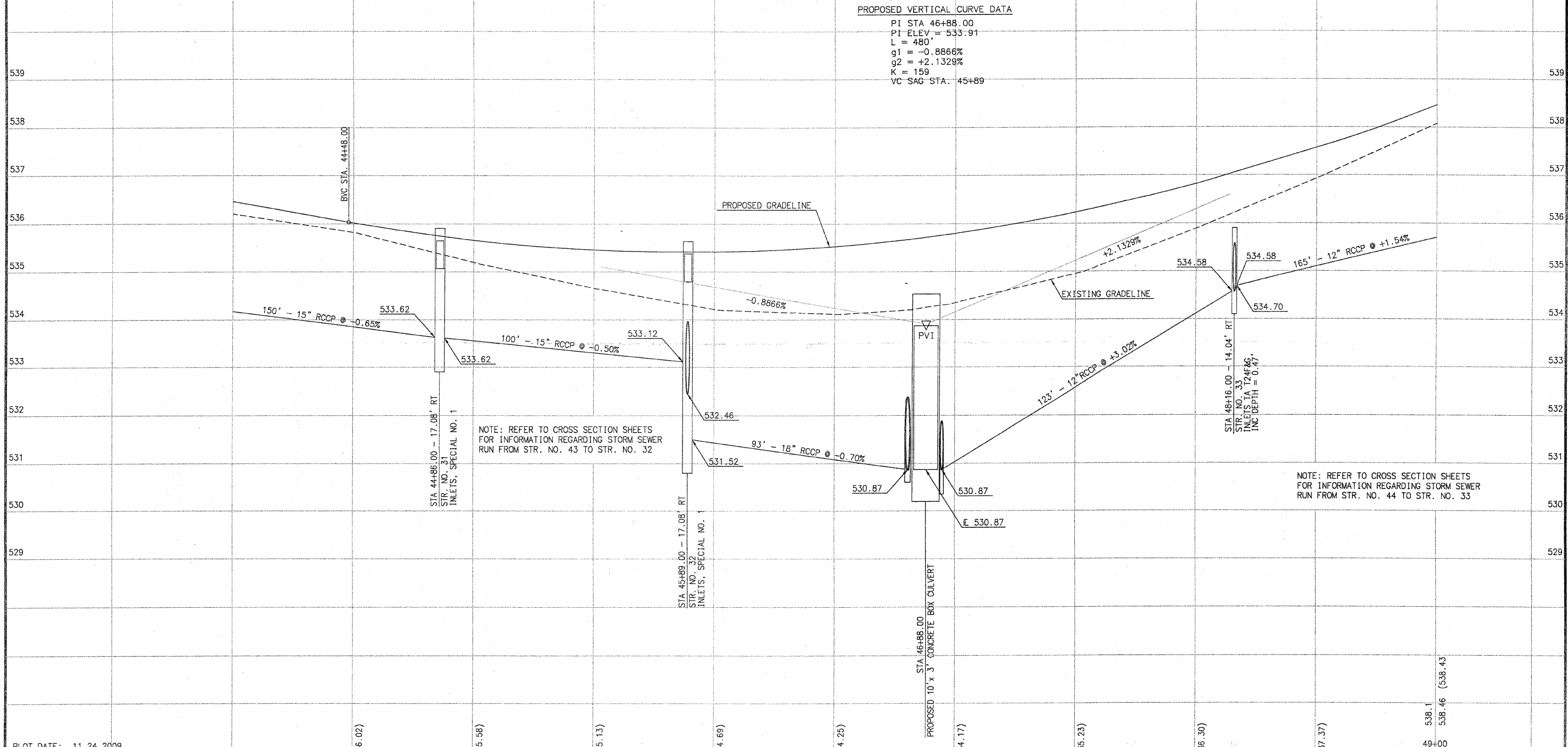


SCALE:
 1" = 20' HORIZ.
 1" = 1' VERT.

SECTION NO.	COUNTY HIGHWAY	COUNTY	SHEET OF SHEETS
06-00092-02-PV	22	ST. CLAIR	22 OF 63
FHWA REG. NO. 7	ILLINOIS	ARA-5011(297)	
FEDERAL AID PROJECT	CONTRACT # 97415		

PROFILE VIEW - RIGHT SIDE



PROPOSED VERTICAL CURVE DATA
 PI STA 46+88.00
 PI ELEV = 533.91
 L = 480'
 g1 = -0.8866%
 g2 = +2.1329%
 K = 159
 VC SAG STA. 45+89

NOTE: REFER TO CROSS SECTION SHEETS FOR INFORMATION REGARDING STORM SEWER RUN FROM STR. NO. 43 TO STR. NO. 32

NOTE: REFER TO CROSS SECTION SHEETS FOR INFORMATION REGARDING STORM SEWER RUN FROM STR. NO. 44 TO STR. NO. 33

PLOT DATE: 11.24.2009

	INITIALS	DATE
DESIGNED	R GEORGEN	4/08
CHECKED	T HOLDENER	12/08
DRAWN	R GEORGEN	4/08
CHECKED	T HOLDENER	12/08

PREPARED BY ST. CLAIR COUNTY HIGHWAY DEPARTMENT

536.2
536.46

535.8
536.02 (536.02)

535.2
535.66 (535.58)

534.7
535.46 (535.13)

534.2
535.42 (534.69)

534.1
535.53 (534.25)

534.4
535.80 (534.17)

535.0
536.23 (535.23)

535.9
536.82 (536.30)

536.9
537.56 (537.37)

538.1
538.46 (538.43)
49+00

RIGHT SIDE