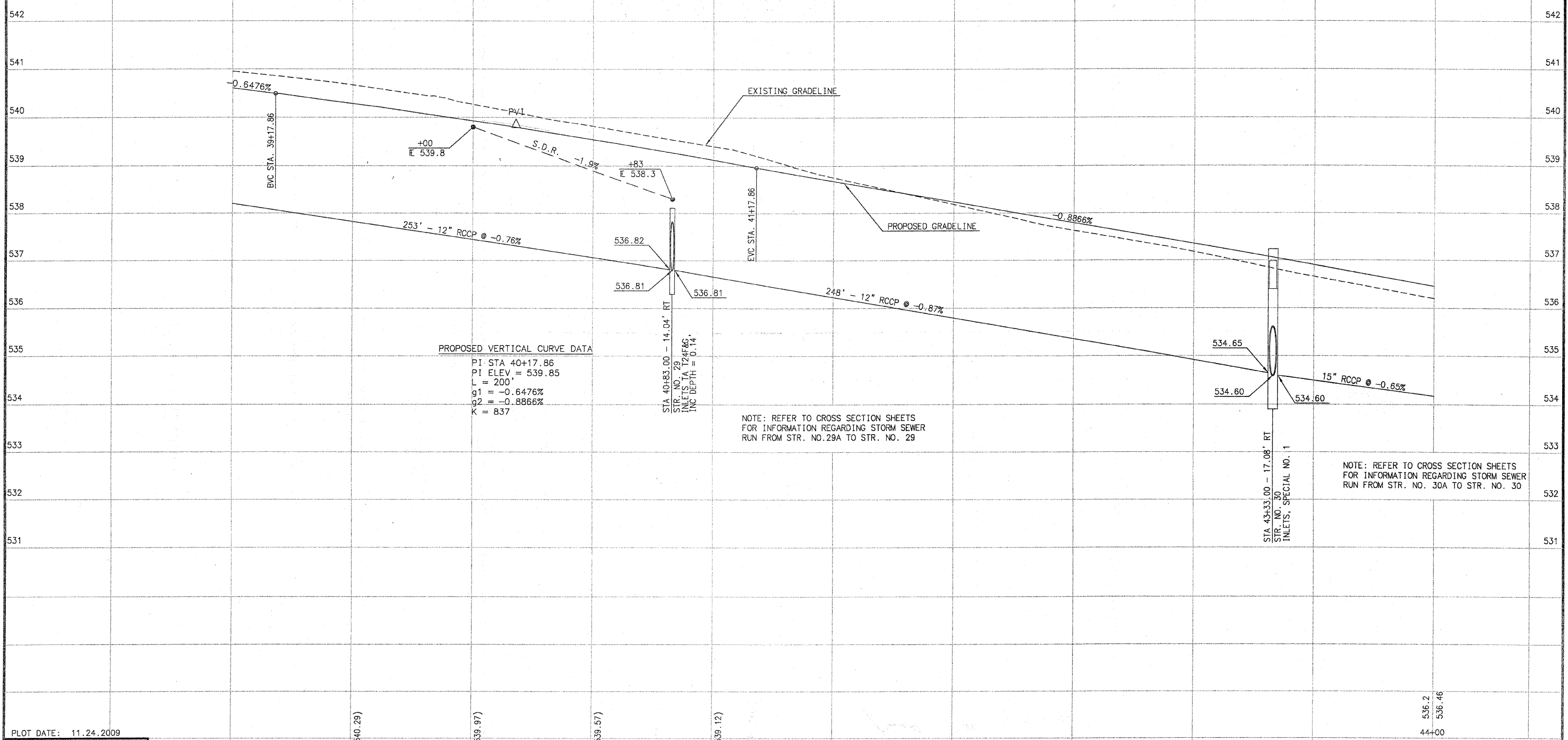


SCALE:
1" = 20' HORIZ.
1" = 1' VERT.

SECTION NO.	COUNTY HIGHWAY	COUNTY	SHEET OF SHEETS
06-00092-02-PV	22	ST. CLAIR	21 OF 63
FHWA REG. NO. 7 ILLINOIS		ARA-5011 (297)	
FEDERAL AID PROJECT		CONTRACT # 97415	

PROFILE VIEW - RIGHT SIDE



NOTE: REFER TO CROSS SECTION SHEETS FOR INFORMATION REGARDING STORM SEWER RUN FROM STR. NO. 29A TO STR. NO. 29

NOTE: REFER TO CROSS SECTION SHEETS FOR INFORMATION REGARDING STORM SEWER RUN FROM STR. NO. 30A TO STR. NO. 30

PLOT DATE: 11.24.2009

	INITIALS	DATE
DESIGNED	R GEORGEN	4/08
CHECKED	T HOLDENER	12/08
DRAWN	R GEORGEN	4/08
CHECKED	T HOLDENER	12/08

PREPARED BY ST. CLAIR COUNTY HIGHWAY DEPARTMENT

541.0	540.61	540.7	540.29 (540.29)	540.3	539.93 (539.97)	539.8	539.54 (539.57)	539.4	539.12 (539.12)	538.8	538.68	538.2	538.24	537.6	537.79	537.2	537.35	536.7	536.91
39+00				40+00				41+00				42+00				43+00			

RIGHT SIDE