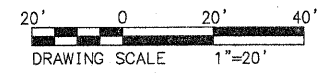


SECTION NO.	HIGHWAY	COUNTY	SHEETS
06-00092-02-PV	22	ST. CLAIR	10 OF 63
FHWA REG. NO. 7	ILLINOIS	ARA-5011 (297)	
FEDERAL AID PROJECT		CONTRACT # 97415	

PLAN VIEW BEGINNING - STA. 11+20



STA. X PROPOSED C ILLINOIS ROUTE 158=  
STA. 6+15.0 C CONCORDIA CHURCH ROAD

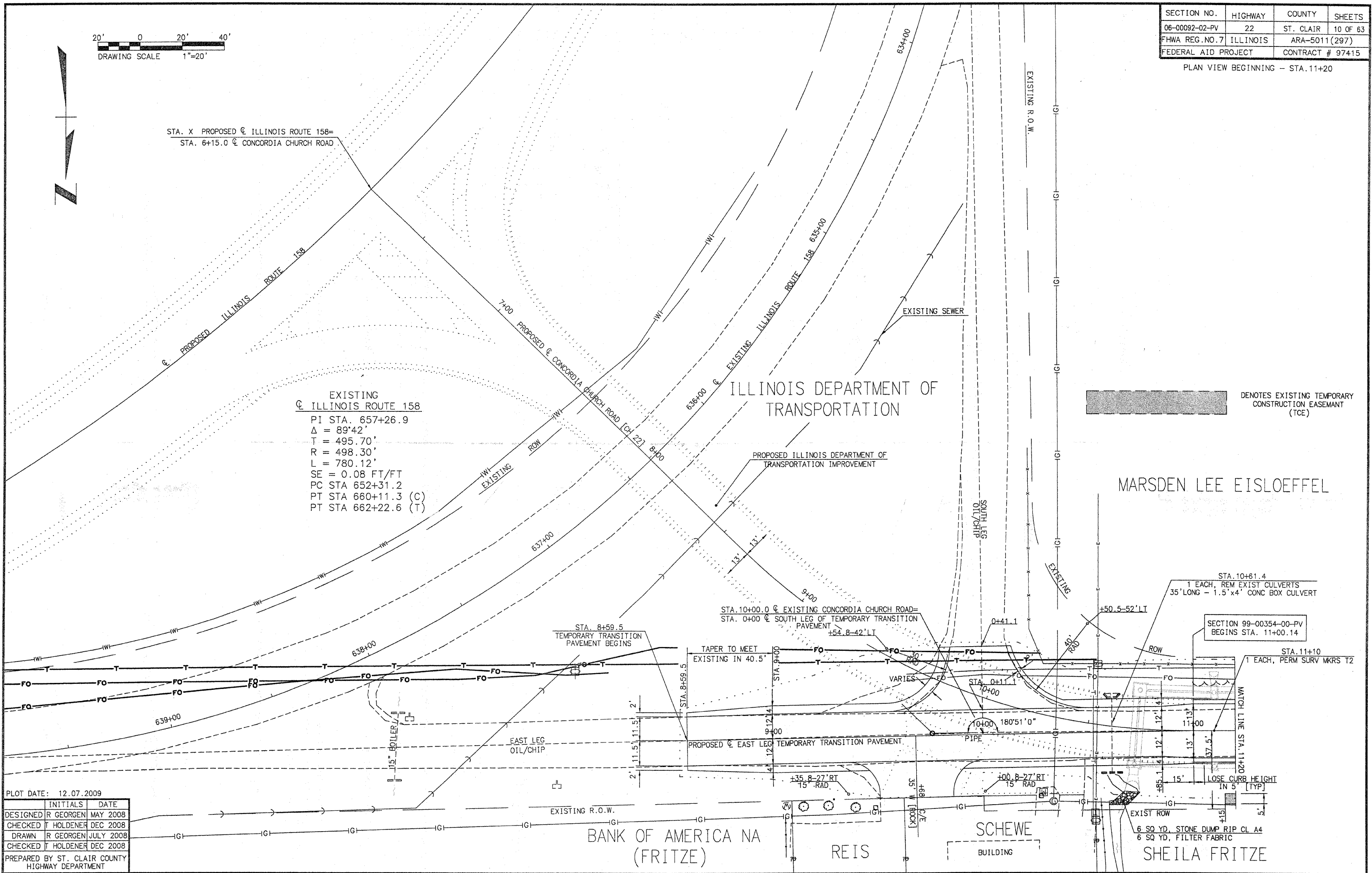
EXISTING  
C ILLINOIS ROUTE 158  
PI STA. 657+26.9  
Δ = 89°42'  
T = 495.70'  
R = 498.30'  
L = 780.12'  
SE = 0.08 FT/FT  
PC STA 652+31.2  
PT STA 660+11.3 (C)  
PT STA 662+22.6 (T)

ILLINOIS DEPARTMENT OF  
TRANSPORTATION



DENOTES EXISTING TEMPORARY  
CONSTRUCTION EASEMENT  
(TCE)

MARSDEN LEE EISLOEFFEL



PLOT DATE: 12.07.2009

	INITIALS	DATE
DESIGNED	R GEORGEN	MAY 2008
CHECKED	T HOLDENER	DEC 2008
DRAWN	R GEORGEN	JULY 2008
CHECKED	T HOLDENER	DEC 2008

PREPARED BY ST. CLAIR COUNTY  
HIGHWAY DEPARTMENT