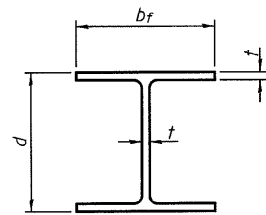


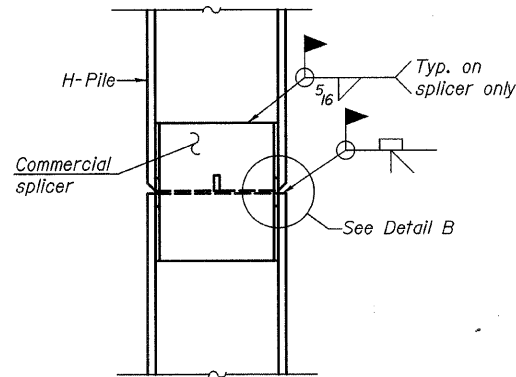
| ROUTE NO. | SECTION | COUNTY | TOTAL SHEETS | SHEET NO. |
|-----------------------|---------|----------|--------------|-----------|
| FAS 549 | * | MACON | 52 | 27 |
| FED. ROAD DIST. NO. 7 | | ILLINOIS | PROJECT | |

*03-00184-00-BR

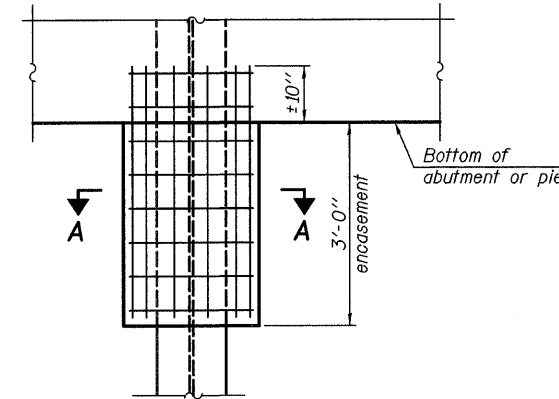


STEEL PILE TABLE

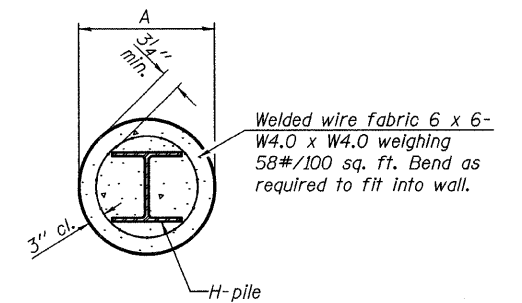
| Designation | Depth d | Flange width bf | Web and Flange thickness t | Encasement diameter A |
|-------------|---------|-----------------|----------------------------|-----------------------|
| HP 14x117 | 14 1/4" | 14 7/8" | 13/16" | 30" |
| x102 | 14" | 14 3/4" | 1/16" | 30" |
| x89 | 13 7/8" | 14 3/4" | 5/8" | 30" |
| x73 | 13 5/8" | 14 5/8" | 1/2" | 30" |
| HP 12x84 | 12 1/4" | 12 1/4" | 1/16" | 24" |
| x74 | 12 8/8" | 12 1/4" | 5/8" | 24" |
| x63 | 12" | 12 1/8" | 1/2" | 24" |
| x53 | 11 3/4" | 12" | 7/16" | 24" |
| HP 10x57 | 10" | 10 1/4" | 9/16" | 24" |
| x42 | 9 3/4" | 10 1/8" | 7/16" | 24" |
| HP 8x36 | 8" | 8 1/8" | 7/16" | 18" |



ELEVATION



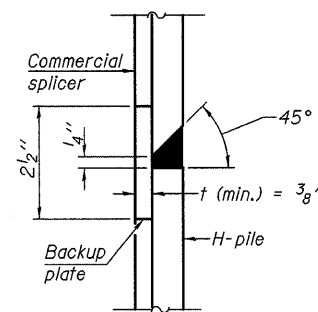
ELEVATION



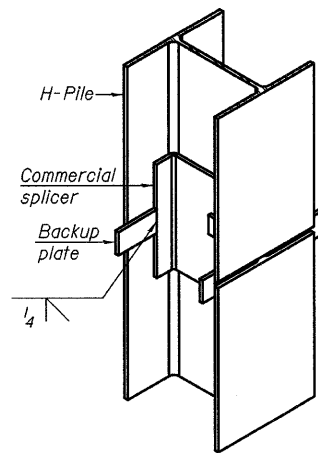
Note:
Forms for encasement may be omitted when soil conditions permit.

SECTION A-A

PILE ENCASEMENT

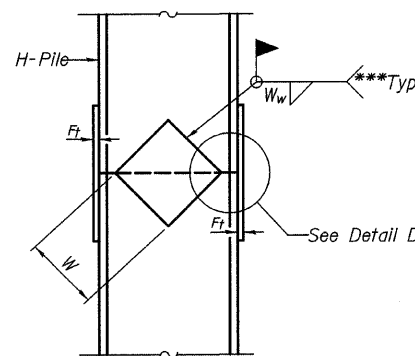


DETAIL "B"

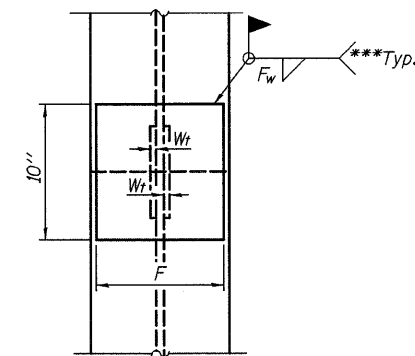


ISOMETRIC VIEW

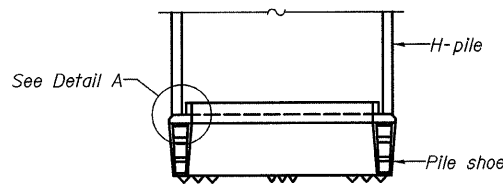
WELDED COMMERCIAL SPLICE



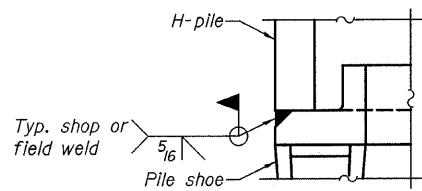
ELEVATION



END VIEW

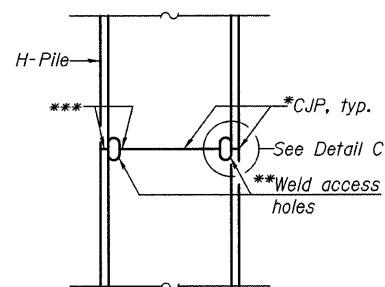


ELEVATION

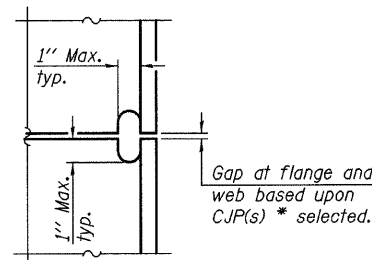


DETAIL A

H-PILE SHOE ATTACHMENT

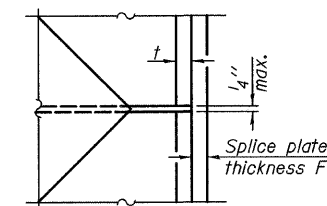


ELEVATION



DETAIL C

COMPLETE PENETRATION WELD SPLICE



DETAIL D

WELDED PLATE FIELD SPLICE

| Designation | F | Ft | Fw | W | Wt | Ww |
|-------------|---------|------|-------|--------|------|------|
| HP 14x117 | 12 1/2" | 1" | 7/8" | 7 3/4" | 5/8" | 1/2" |
| x102 | 12 1/2" | 7/8" | 3/4" | 7 3/4" | 5/8" | 1/2" |
| x89 | 12 1/2" | 3/4" | 1/16" | 7 3/4" | 5/8" | 1/2" |
| x73 | 12 1/2" | 5/8" | 9/16" | 7 3/4" | 5/8" | 1/2" |
| HP 12x84 | 10" | 7/8" | 1/16" | 6 1/2" | 5/8" | 1/2" |
| x74 | 10" | 7/8" | 1/16" | 6 1/2" | 5/8" | 1/2" |
| x63 | 10" | 5/8" | 1/2" | 6 1/2" | 1/2" | 3/8" |
| x53 | 10" | 5/8" | 1/2" | 6 1/2" | 1/2" | 3/8" |
| HP 10x57 | 8" | 3/4" | 9/16" | 5 1/4" | 1/2" | 3/8" |
| x42 | 8" | 5/8" | 9/16" | 5 1/4" | 1/2" | 3/8" |
| HP 8x36 | 7" | 5/8" | 7/16" | 4 1/4" | 1/2" | 3/8" |

* Use joint conforming to Figure 3.4 in AWS D1.1, Structure Welding Code - Steel.

** Preparation per Fig. 5.2 in AWS D1.1, Structure Welding Code - Steel.

*** Interrupt welds 1/4" from end of each pile.

Note:
The steel H-piles shall be according to AASHTO M270 Grade 50.

CH 20 OVER STEVENS CREEK

STEEL HP PILE DETAILS

| | | | |
|-----------|-------|------------------------|-----------------|
| REVISIONS | CH 20 | SECTION 03-00184-00-BR | DRAWN BY DATE |
| 1 | | SN 058-3371 | R KING 6/09 |
| 2 | | MACON | COUNTY |
| 3 | | | CHECKED BY DATE |
| 4 | | | JMB 6/09 |
| 5 | | | BOOK NUMBER |
| 6 | | | |
| 7 | | | |
| 8 | | | |
| 9 | | | |
| 10 | | | |

HOMER L. CHASTAIN & ASSOCIATES, LLP
CONSULTING ENGINEERS
184-061977

DECATUR CHICAGO
(217) 422-8644 (773) 714-0660

ROCKFORD
(815) 489-0660

PROJECT No.
4901

SHEET No.