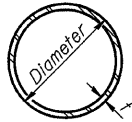


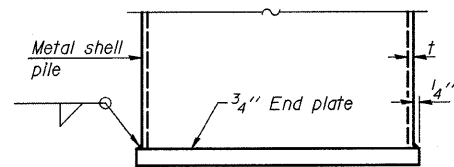
ROUTE NO.	SECTION	COUNTY	TOTAL SHEETS	SHEET NO.
FAS 549	*	MACON	52	19
FED. ROAD DIST. NO. 7		ILLINOIS	PROJECT	

*03-00184-00-BR

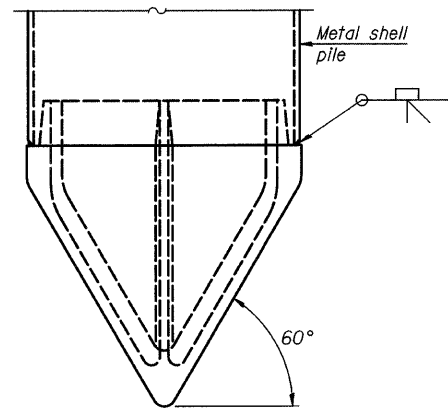


METAL SHELL PILE TABLE

Designation and outside diameter	Wall thickness t	Weight per foot (Lbs./ft.)	Inside volume (yd. ³ /ft.)
PP12	0.179"	22.60	0.0274
PP12	0.250"	31.37	0.0267
PP14	0.250"	36.71	0.0368
PP14	0.312"	45.61	0.0361



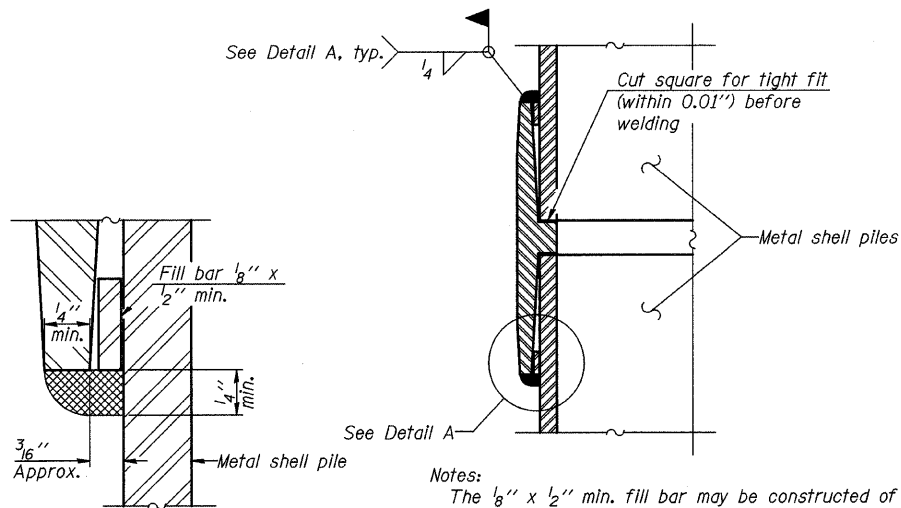
END PLATE ATTACHMENT



METAL SHELL PILE SHOE ATTACHMENT

(See Note A)

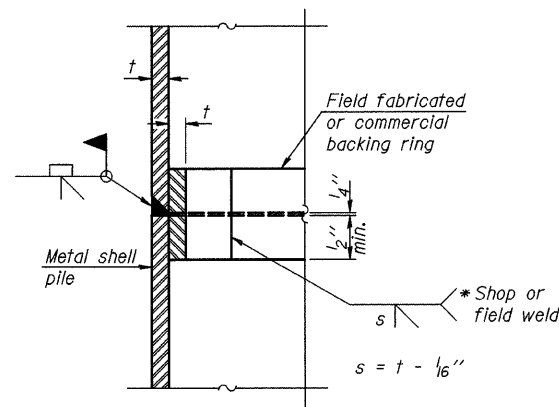
Note A:
When called for on the plans, the Contractor shall furnish metal shell pile shoes consisting of a single piece conical pile point as shown. The pile shoes shall be cast in one piece steel according to either ASTM A 148 Grade 90-60 or AASHTO M 103 Grade 65-35 and shall provide full bearing over the full circumference of the metal shell pile. The pile shoe shall have tapered leads to assure proper alignment and fitting and shall be secured to the pile with a circumferential weld.



DETAIL A

Notes:
The 1/8" x 1/2" min. fill bar may be constructed of 2 bars with a 1/8" max. gap between them.
Pile segments shall be driven to solid contact with splicer before welding.

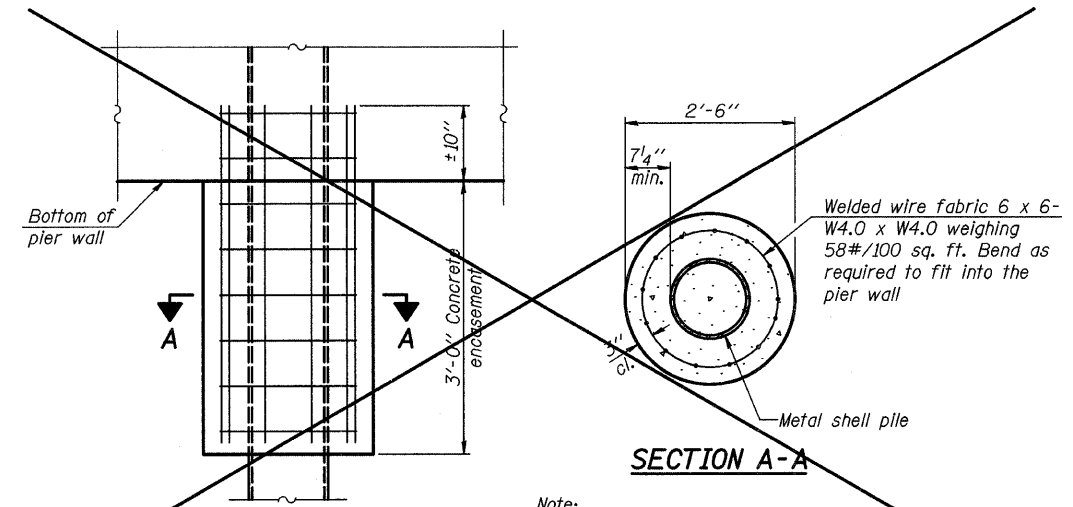
WELDED COMMERCIAL SPLICE



COMPLETE PENETRATION WELD SPLICE

* Field fabricated backing ring may be made from pile shell by removing segment to allow reducing circumference and vertically rejoin with partial joint penetration weld.

Note:
The metal shell piles shall be according to ASTM A 252 Grade 3.

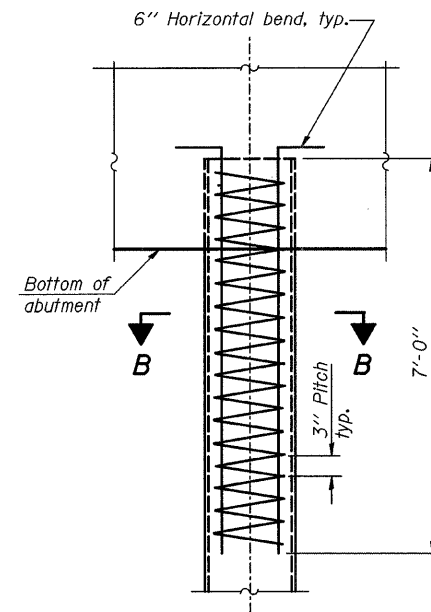


ELEVATION

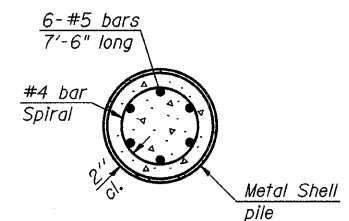
SECTION A-A

CONCRETE ENCASEMENT AT PIERS

Note:
Forms for encasement may be omitted when soil conditions permit.



ELEVATION



SECTION B-B

METAL SHELL REINFORCEMENT AT ABUTMENTS

CH 20 OVER TRIBUTARY TO STEVENS CREEK

METAL SHELL PILE DETAILS

REVISIONS	CH 20	SECTION 03-00184-00-BR	DRAWN BY	DATE
1		SN 058-3370	R KING	6/09
2		MACON	UHB	6/09
3				
4				
5				
6				
7				
8				
9				
10				

HOMER L. CHASTAIN & ASSOCIATES, LLP
CONSULTING ENGINEERS
184-00187

DECATUR CHICAGO
(817) 422-8544 (773) 714-0650

ROCKFORD
(815) 489-0050

PROJECT No. 4901
SHEET No.