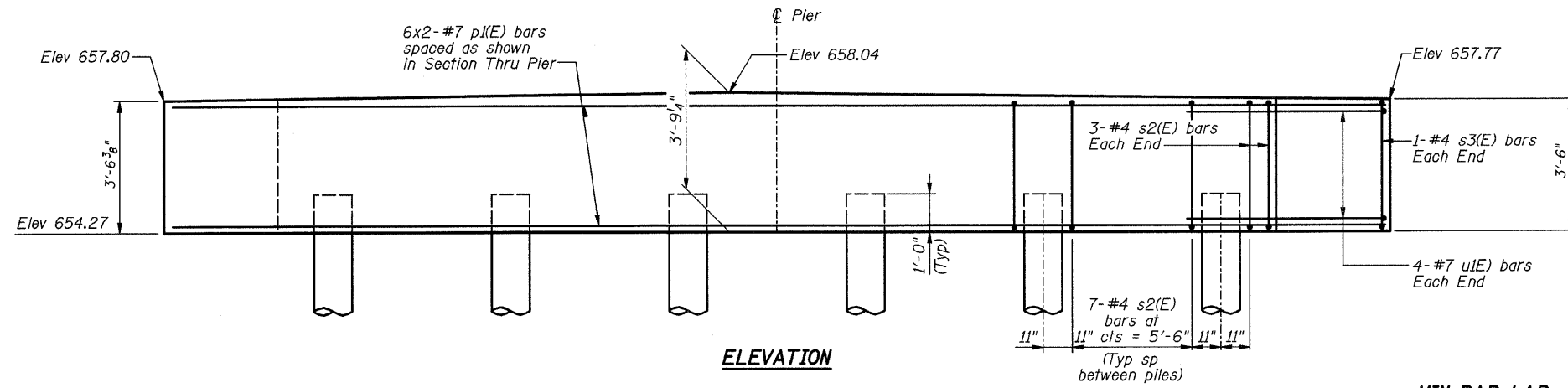


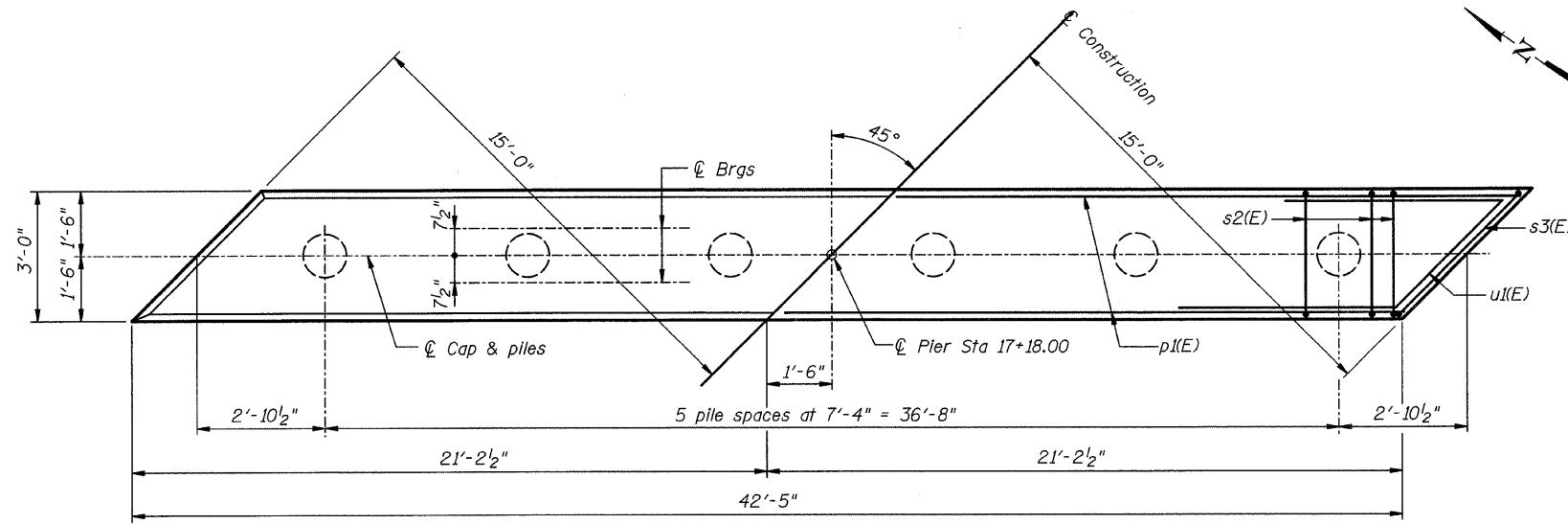
Sheet No. 8
of 10 Sheets

ROUTE NO.	SECTION	COUNTY	TOTAL SHEETS	SHEET NO.
FAS 549	*	MACON	52	18
FED. ROAD DIST. NO. 7		ILLINOIS	PROJECT	

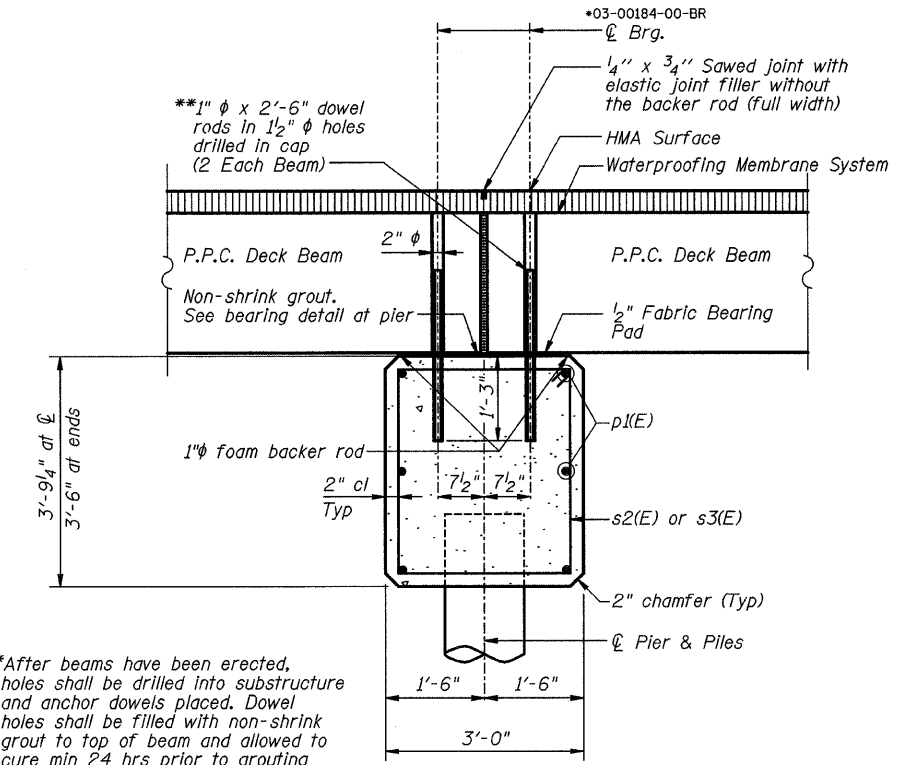


ELEVATION

MIN BAR LAP
#7 bar = 3'-5"

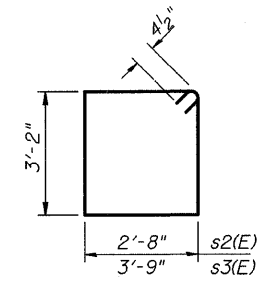


PLAN

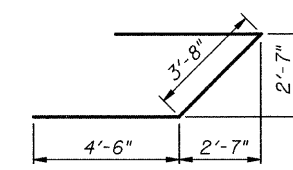


SECTION THRU PIER
(Dimensions at Rt L's)

***After beams have been erected, holes shall be drilled into substructure and anchor dowels placed. Dowel holes shall be filled with non-shrink grout to top of beam and allowed to cure min 24 hrs prior to grouting the shear keys.



BARS s2(E) & s3(E)



BAR u1(E)

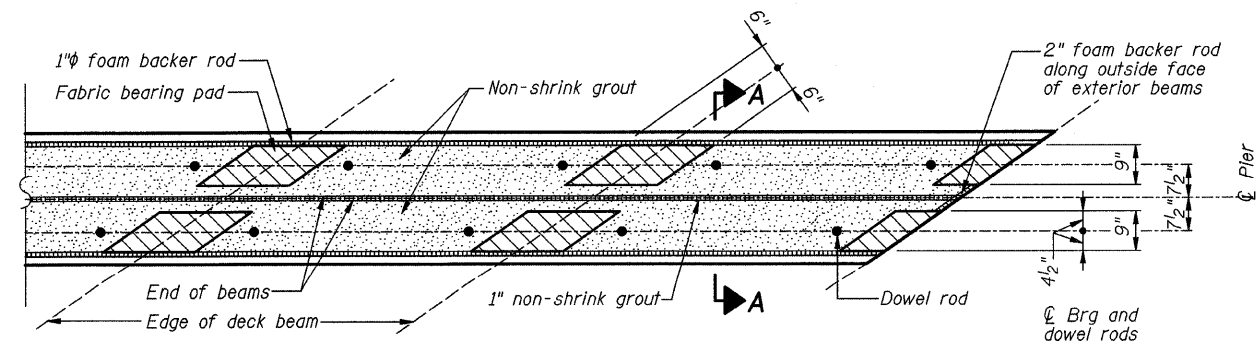
PIER NO. 1 BILL OF MATERIAL

Bar	No.	Size	Length	Shape
p1(E)	12	#7	22'-9"	—
s2(E)	41	#4	12'-5"	□
s3(E)	2	#4	14'-7"	□
u1(E)	8	#7	12'-8"	—
Concrete Structures		Cu Yd	17.2	
Reinforcement Bars (Epoxy Coated)		Pound	1130	
Furnishing Metal Pile Shells 12"x0.250"		Foot	252	
Driving Piles		Foot	252	

Reinforcement bars designated (E) shall be epoxy coated.

PILE DATA:

Type and Size: Metal Shell 12 in dia x 0.25 in walls
Nominal Required Bearing: 225 kips
Allowable Resistance Available: 75 kips
Est. Length: 42'
No. Production Piles: 6
No. Test Piles: 0



ALTERNATE FIXED BEARINGS AT PIER

CH 20 OVER TRIBUTARY TO STEVENS CREEK

PIER DETAILS

REVISIONS	CH 20	SECTION 03-00184-00-BR	DRAWN BY DATE
1		SN 058-3370	R KING 6/09
2		MACON	CHECKED BY DATE
3		COUNTY	JMB 6/09
4			BOOK NUMBER
5			
6			
7			
8			
9			
10			

HOMER L. CHASTAIN & ASSOCIATES, LLP
CONSULTING ENGINEERS
184-08197

DECATUR CHICAGO
(478) 422-8544 (770) 714-0650

ROCKFORD
(815) 489-0650

PROJECT No. **4901**
SHEET No.