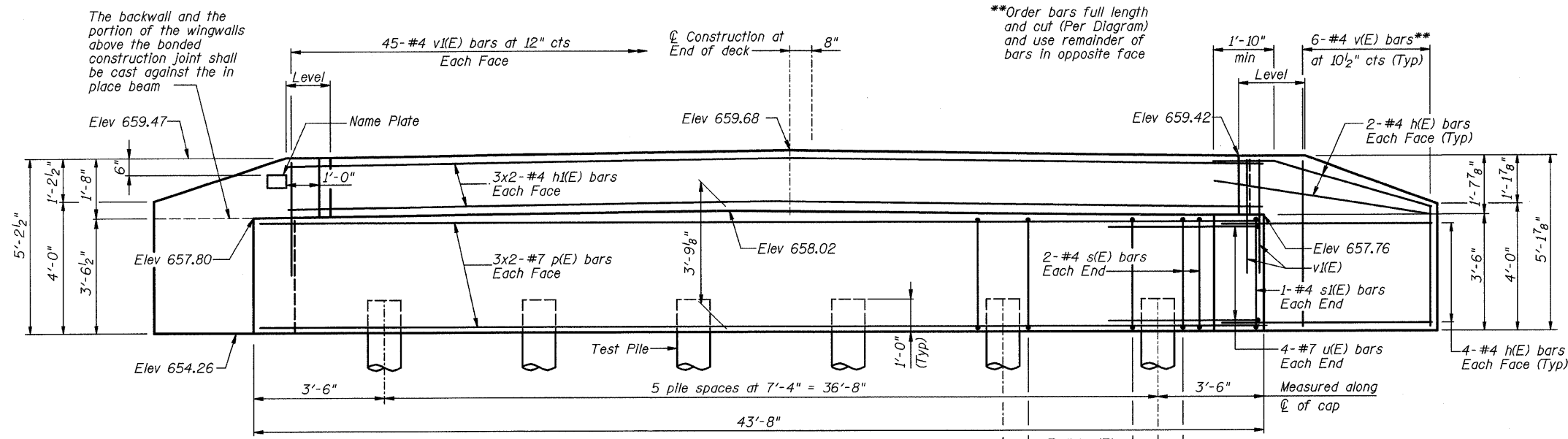


Sheet No. 6
of 10 Sheets

| | | | | |
|-----------------------|----------|---------|--------------|-----------|
| ROUTE NO. | SECTION | COUNTY | TOTAL SHEETS | SHEET NO. |
| FAS 549 | * | MACON | 52 | 16 |
| FED. ROAD DIST. NO. 7 | ILLINOIS | PROJECT | | |

*03-00184-00-BR



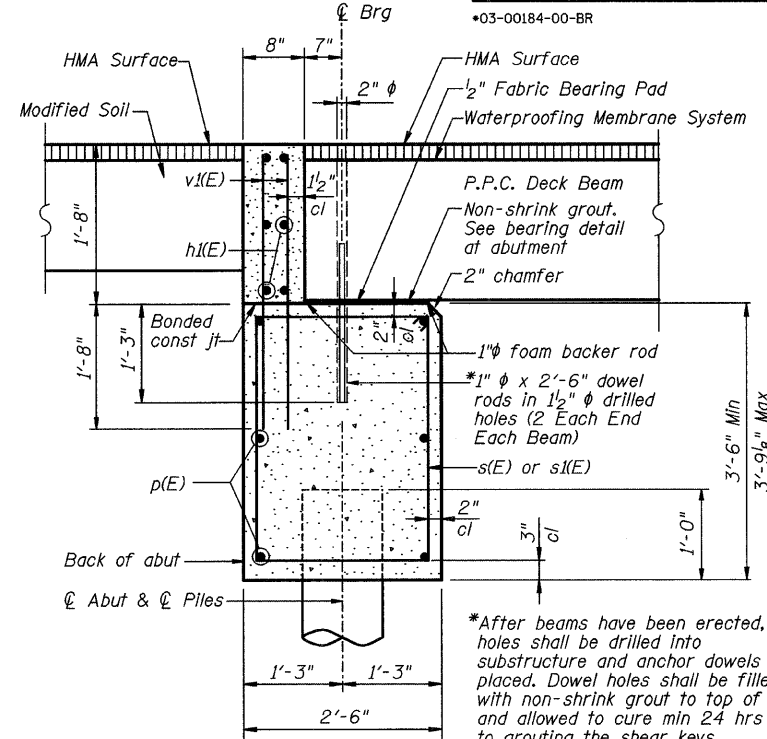
PILE DATA:

Type and Size: Metal Shell 12 in. dia x 0.25 in walls
Nominal Required Bearing: 159 kips
Allowable Resistance Available: 53 kips
Est. Length: 21'
No. Production Piles: 5
No. Test Piles: 1

ELEVATION

MIN BAR LAP

#4 bar = 1'-8"
#7 bar = 3'-5"



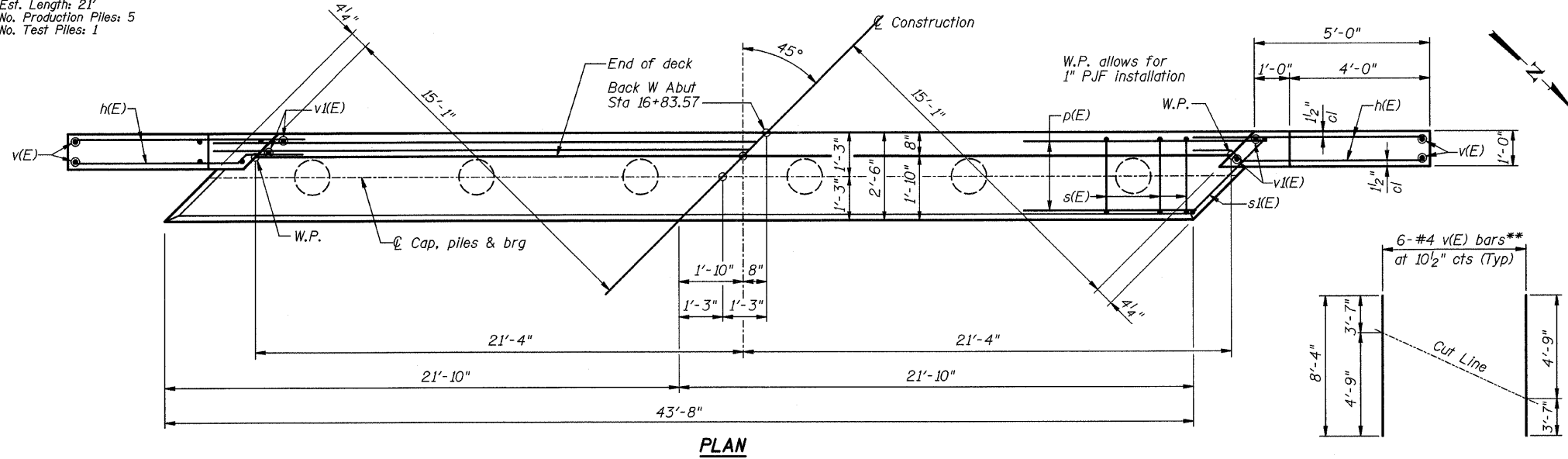
SECTION THRU ABUTMENT

(Dimensions at Rt L's)

BILL OF MATERIAL

| Bar No. | Size | Length | Shape |
|---|-------|---------|-------|
| h(E) 24 | #4 | 7'-2" | — |
| h(E) 12 | #4 | 22'-2" | — |
| p(E) 12 | #7 | 24'-3" | — |
| s(E) 39 | #4 | 11'-3" | □ |
| s(E) 2 | #4 | 13'-1" | □ |
| u(E) 8 | #7 | 11'-11" | └ |
| v(E) 12 | #4 | 8'-4" | — |
| v(E) 90 | #4 | 3'-4" | — |
| Structure Excavation | Cu Yd | 68 | |
| Concrete Structures | Cu Yd | 18.3 | |
| Reinforcement Bars (Epoxy Coated) | Pound | 1660 | |
| Furnishing Metal Pile Shells 12"x0.250" | Foot | 105 | |
| Driving Piles | Foot | 105 | |
| Controlled Low Strength Material | Cu Yd | 34 | |
| Test Pile Metal Shells | Each | 1 | |

Reinforcement bars designated (E) shall be epoxy coated.



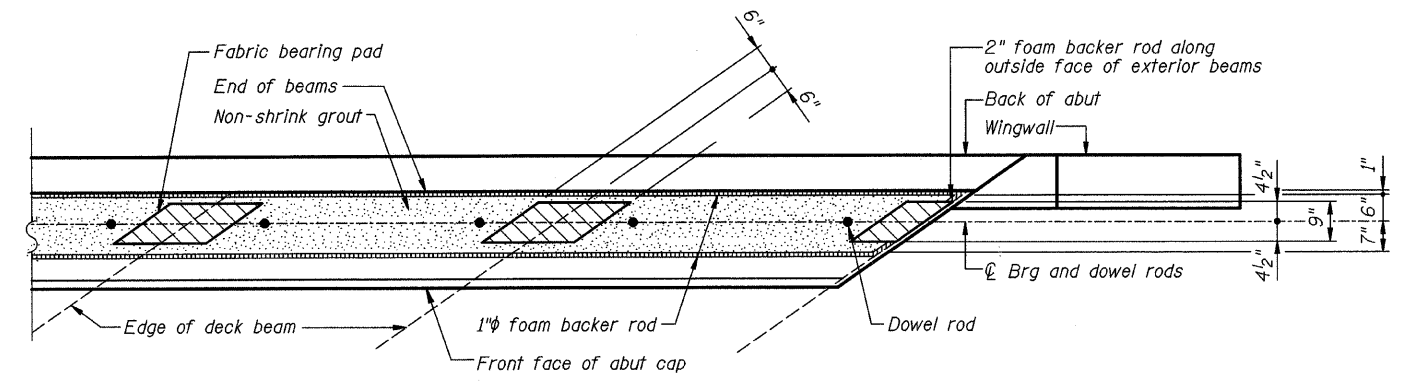
PLAN

FIELD CUTTING DIAGRAM

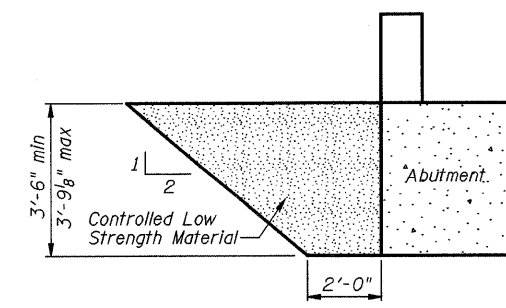
**Order v(E) full length. Cut as shown and use remainder of bars in opposite face.

BARS s(E) & s(E)

BAR u(E)



ALTERNATE FIXED BEARINGS AT ABUTMENT



CONTROLLED LOW STRENGTH MATERIAL LIMITS

CH 20 OVER TRIBUTARY TO STEVENS CREEK

WEST ABUTMENT DETAILS

| | | | |
|-----------|-------|------------------------|-----------------|
| REVISIONS | CH 20 | SECTION 03-00184-00-BR | DRAWN BY DATE |
| 1 | MACON | SN 058-3370 | R KING 6/09 |
| 2 | | | CHECKED BY DATE |
| 3 | | | JMB 6/09 |
| 4 | | | BOOK NUMBER |
| 5 | | | |
| 6 | | | |
| 7 | | | |
| 8 | | | |
| 9 | | | |
| 10 | | | |

HOMER L. CHASTAIN & ASSOCIATES, LLP
CONSULTING ENGINEERS
DECATUR CHICAGO
(317) 422-8844 (773) 714-0050
ROCKFORD
(815) 489-0050

PROJECT No. 4901
SHEET No.