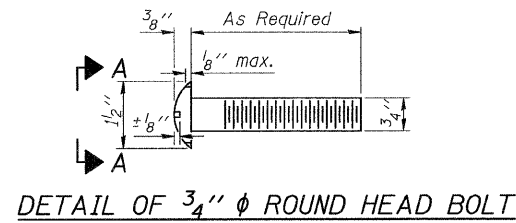
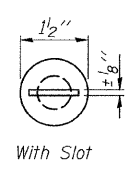


FOR RAIL POST SPACING SEE SH.#6 OF 6.

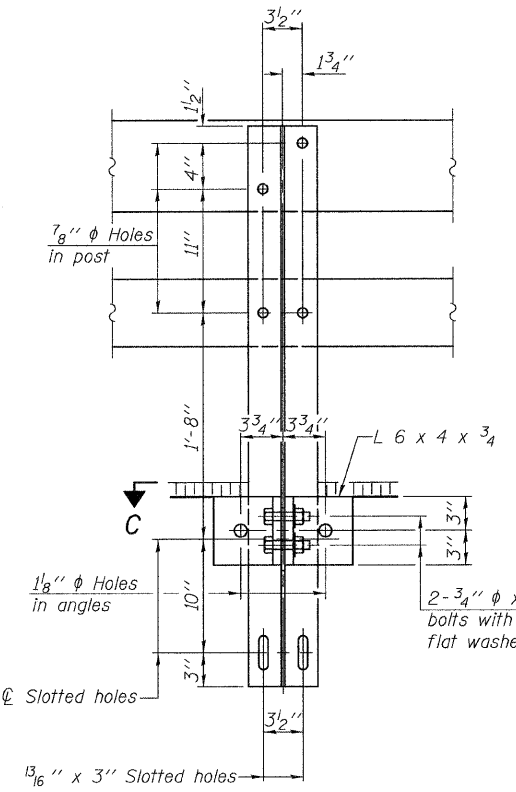


DETAIL OF 3/4" ϕ ROUND HEAD BOLT

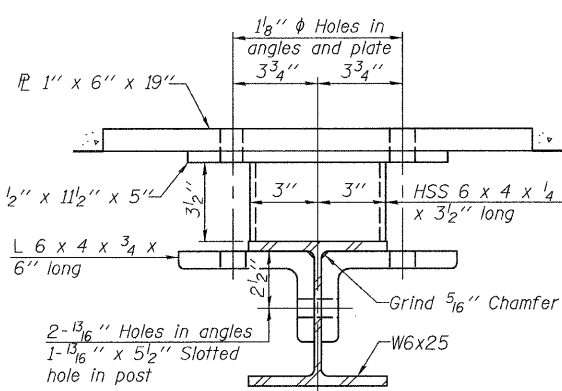


With Slot

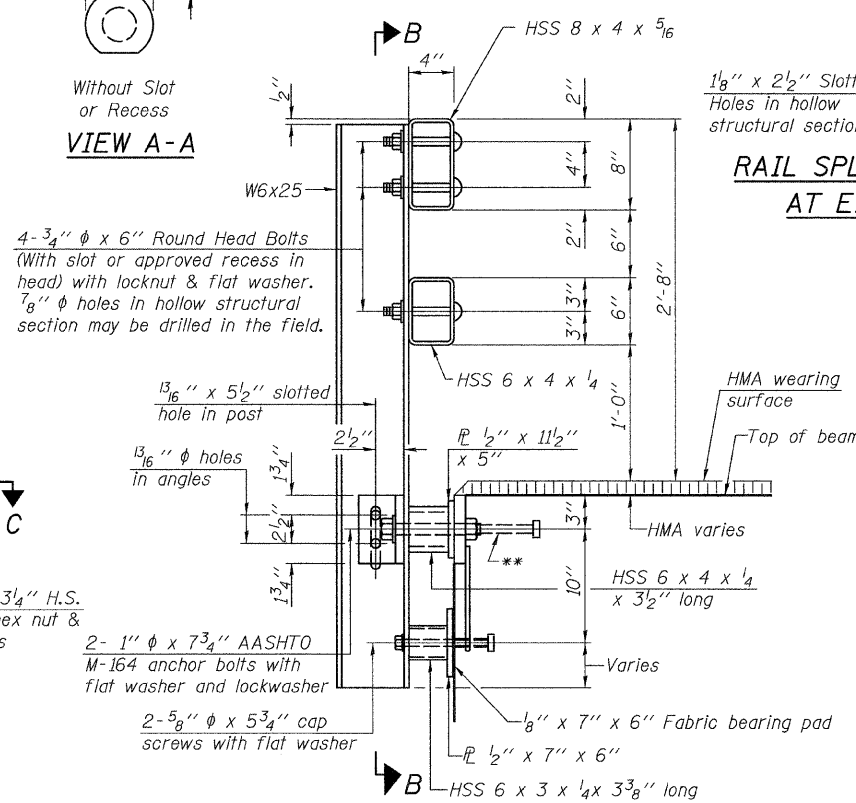
Without Slot or Recess
VIEW A-A



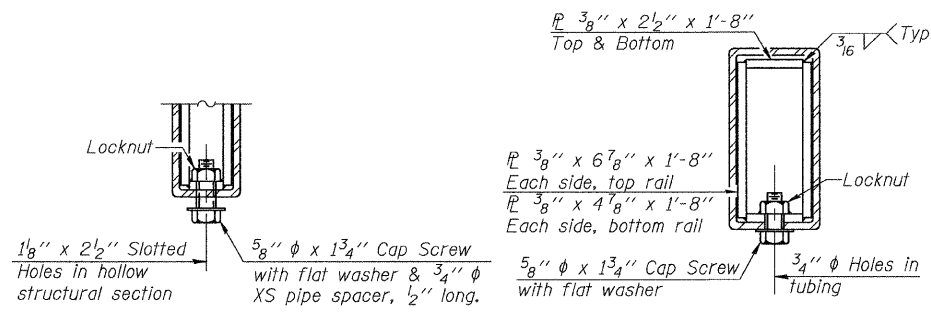
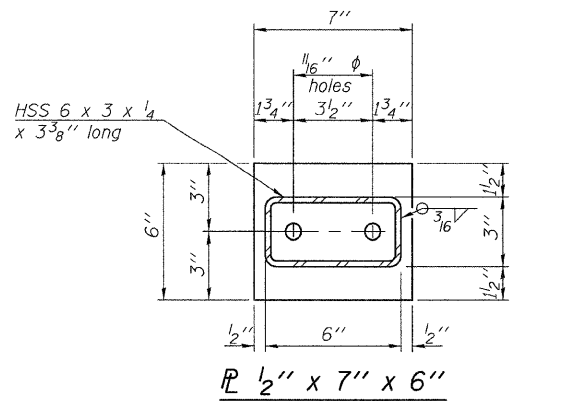
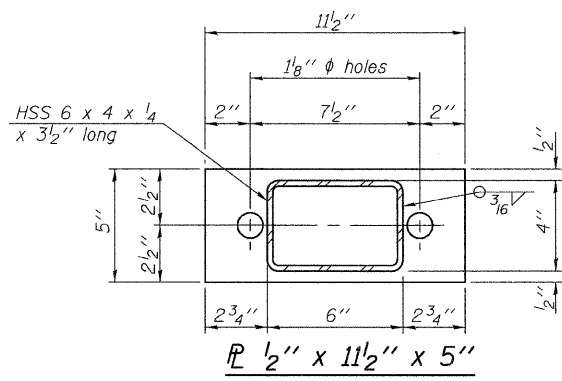
SECTION B-B



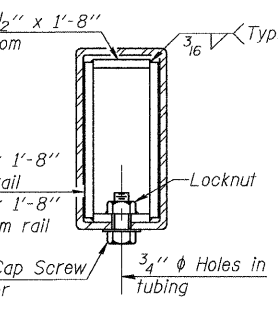
SECTION C-C



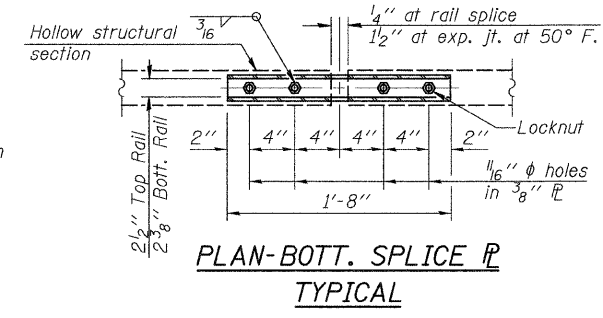
SECTION AT RAIL POST



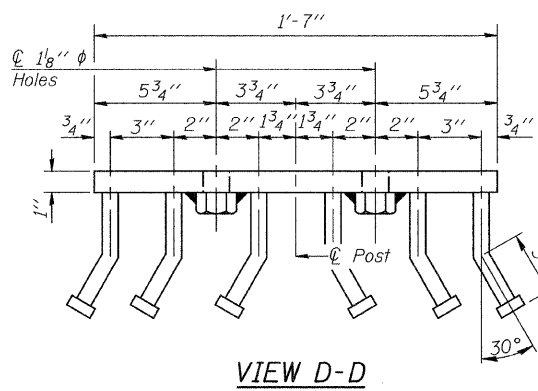
RAIL SPLICE CONNECTION AT EXPANSION JT.



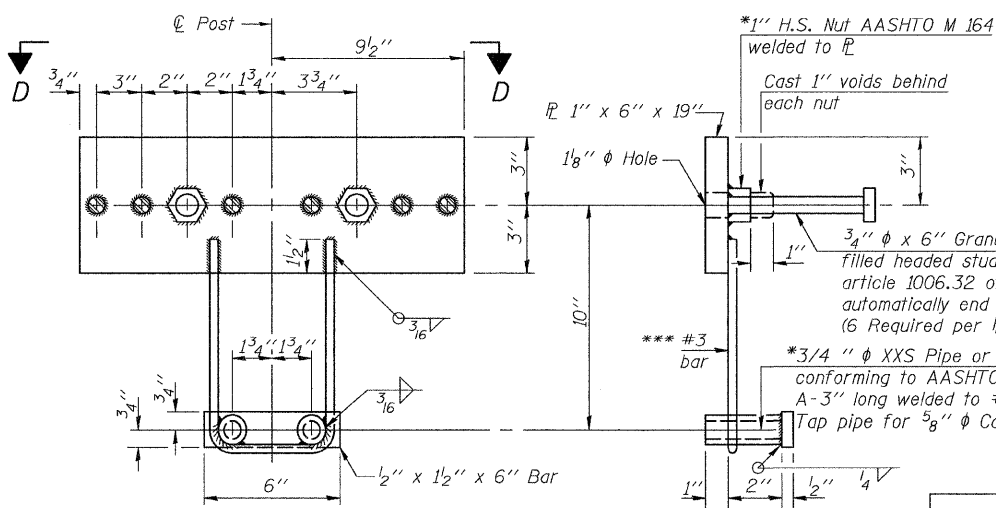
SECTION AT RAIL SPLICE



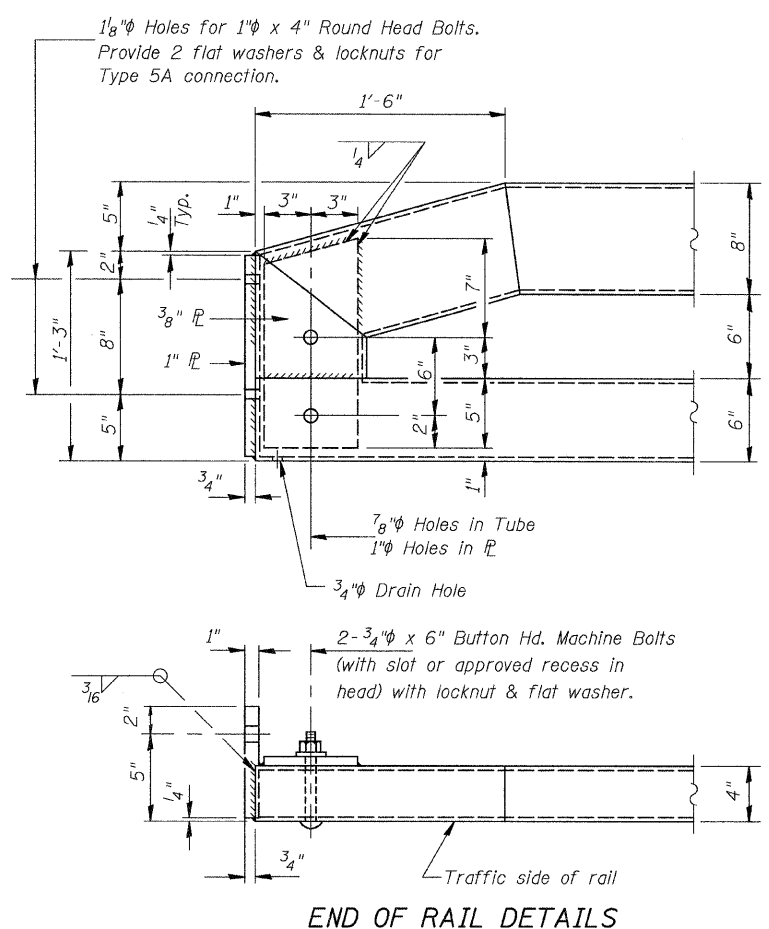
PLAN-BOTT. SPLICE R TYPICAL



VIEW D-D



ANCHOR DEVICE



END OF RAIL DETAILS

- Notes:
- All field drilled holes shall be coated with an approved zinc rich paint before erection.
 - For multi-span bridges, sufficient 1/4" x 6" x 1'-2" galvanized steel shims shall be provided to align rail between adjacent spans. Cost included with Steel Bridge Rail, Type SM (Special).
 - Steel rail elements shall be galvanized according to Article 509.05 of the Standard Specifications.
 - ** The studs of the anchor devices shall be placed below the top reinforcement bars and the outermost longitudinal reinforcement bar shall be placed directly above the studs of the rail post anchor device.
 - *** Whenever the lower insert assemblies interfere with strand locations, the #3 bars shall be cut and adjusted in order to allow raising or lowering of the lower inserts. Maximum adjustment not to exceed 1/2".

BILL OF MATERIAL

Item	Unit	Quantity
① Steel Bridge Rail, Type SM (Special)	FOOT	162

① See Special Provisions

STEEL RAILING, TYPE SM (SPECIAL)
SCOTT COUNTY
SECTION 09-00006-02-BR
C.H. 3 OVER WOLF RUN CREEK

SHEET NO. 4 6 SHEETS	RTE.	SECTION	COUNTY	TOTAL SHEETS	SHEET NO.
	CH 3	09-00006-02-BR	SCOTT	10	8
		SN 086-3000	CONTRACT NO. 93519		
	FED. ROAD DIST. NO. 7	ILLINOIS	FED. AID PROJECT ARA-0605(107)		

*Threaded areas shall be plugged or blocked off during casting of deck. Galvanized after fabrication.