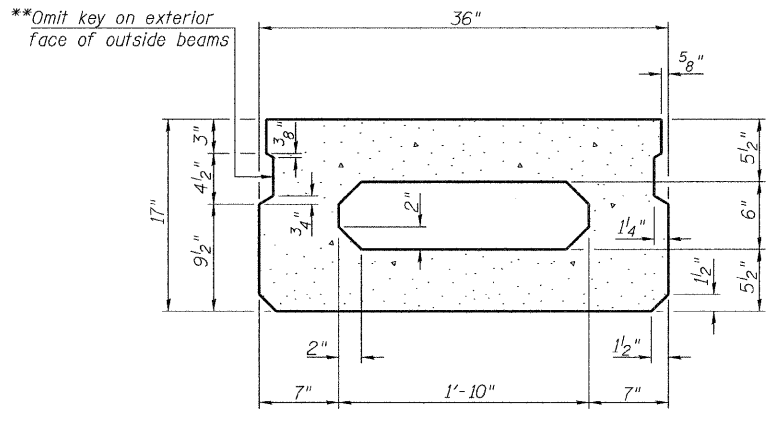
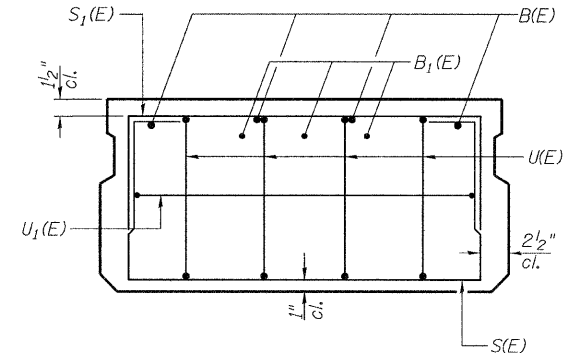


**SECTION C-C**

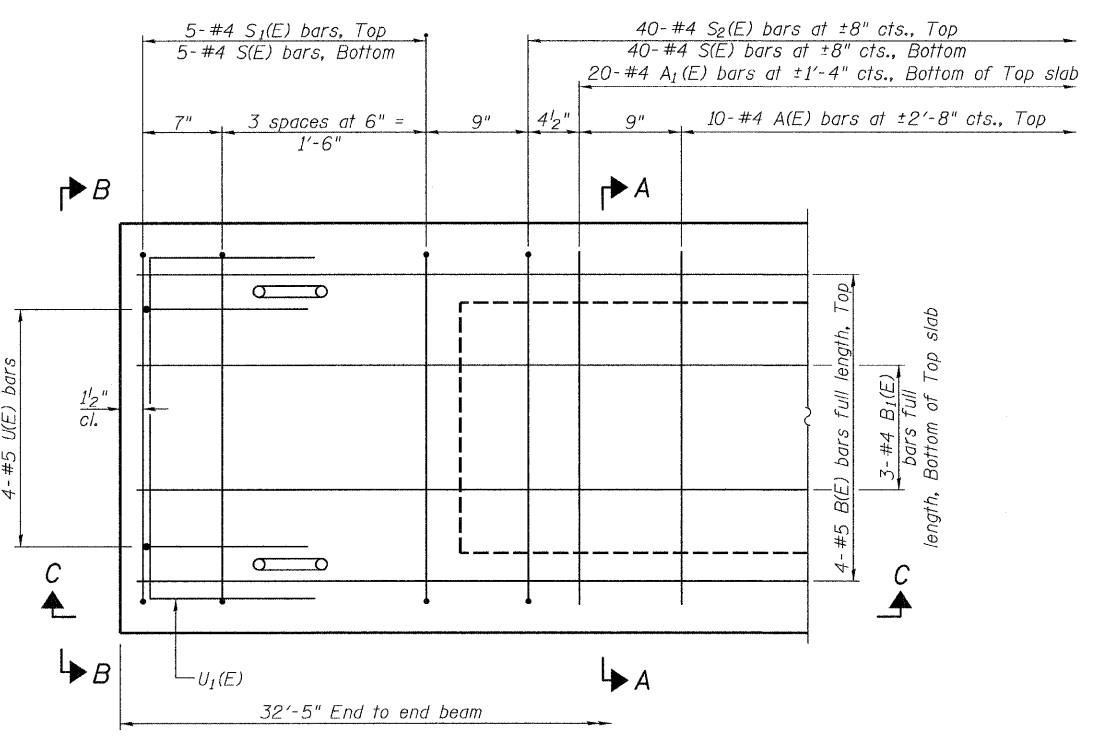


**SECTION A-A**  
(Showing dimensions)

\*\*Rail post anchor devices (Sheet 4 of 8) to be cast into exterior face of outside beams.

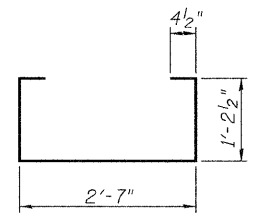


**VIEW B-B**

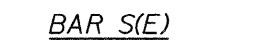


**PLAN VIEW**

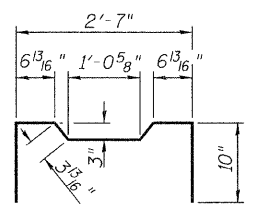
Note: Spacing of S(E) and S2(E) bars may be adjusted up to 4" in the immediate area of the transverse tie diaphragms to miss the block outs for the transverse ties.



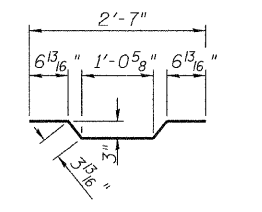
**BAR S1(E)**



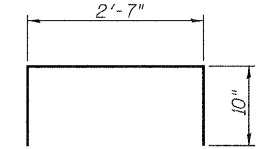
**BAR S(E)**



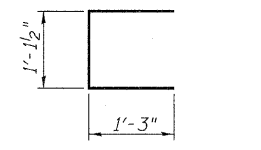
**BAR S2(E)**



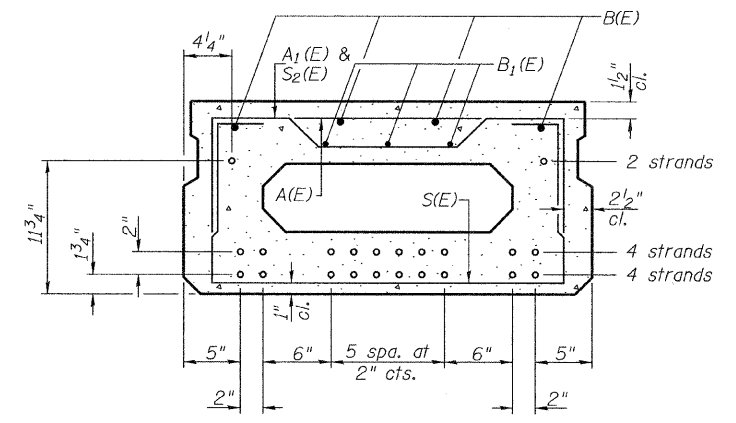
**BAR A1(E)**



**BAR U(E)**



**BAR U1(E)**



**SECTION A-A**

10-1/2"  $\phi$  Strands Each Strand Stressed to 30,900 Lbs.  
4-Strands 1 3/4" up, 4-Strands 3 3/4" up, 2-Strands 11 3/4" up

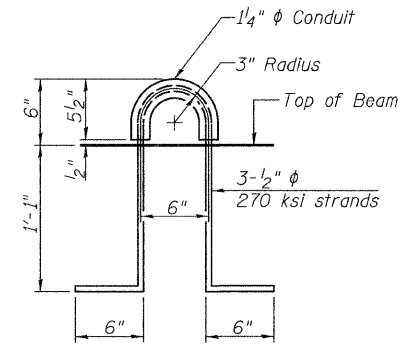
Note: Place the number of strands specified in each row symmetrically about the centerline of beam in the permissible strand locations shown.

**BAR LIST-ONE BEAM ONLY**  
(For information only)

Bar	No.	Size	Length	Shape
A(E)	10	#4	2'-7"	—
A1(E)	20	#4	2'-10"	—
B(E)	4	#5	*32'-2"	—
B1(E)	3	#4	*32'-2"	—
S(E)	50	#4	5'-9"	U
S1(E)	10	#4	4'-3"	U
S2(E)	40	#4	4'-6"	U
U(E)	8	#5	3'-8"	U
U1(E)	2	#4	5'-0"	U

\* Total Length, Lap as necessary

Note: See sheet 2 of 8 for additional details and Bill of Material.



**LIFTING LOOP DETAIL**

**SUPERSTRUCTURE DETAILS**  
**COUNTY HIGHWAY 12**  
**OVER MILLER CREEK**  
**SECTION 00-00063-00-BR**  
**CASS COUNTY**  
**STATION 256+92.00**