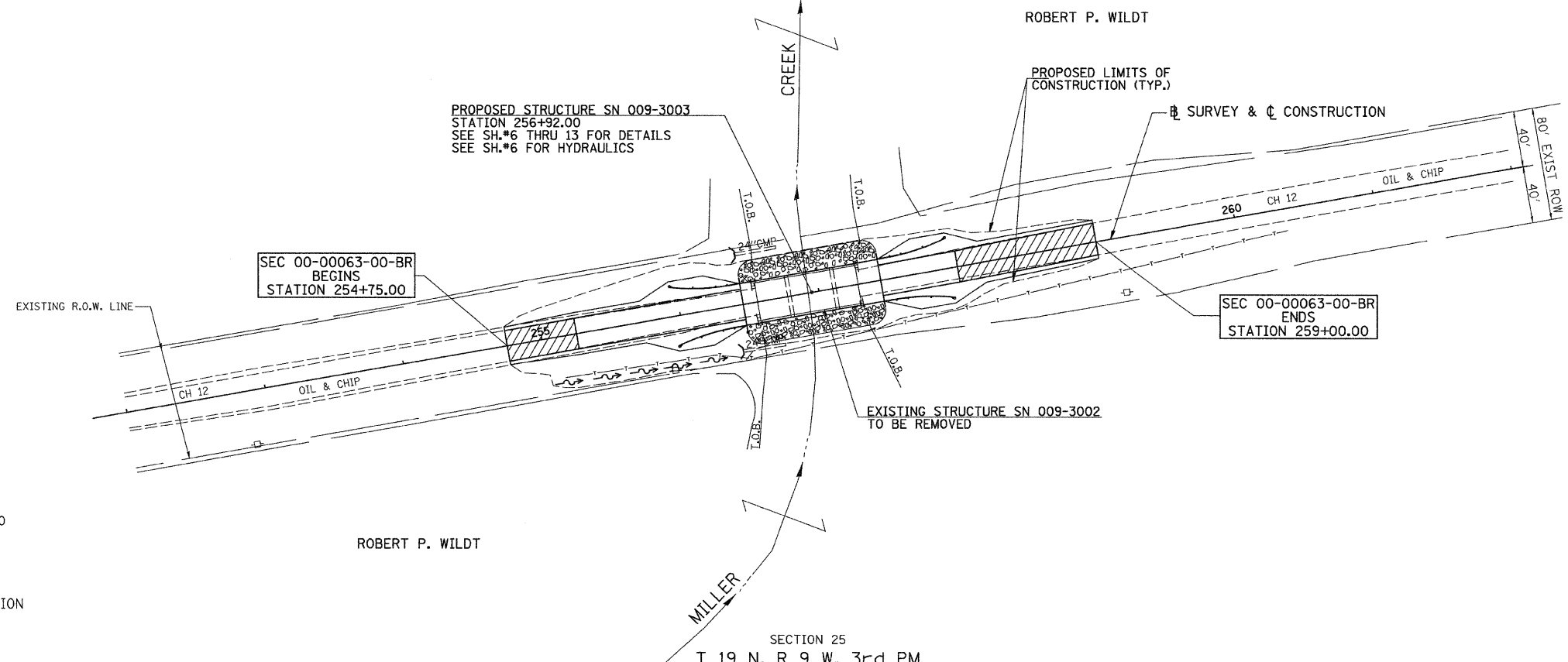
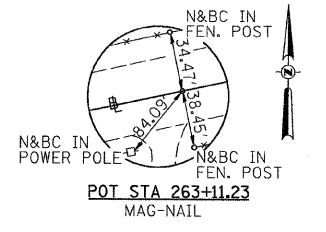


T 19 N, R 9 W, 3rd PM  
SECTION 25

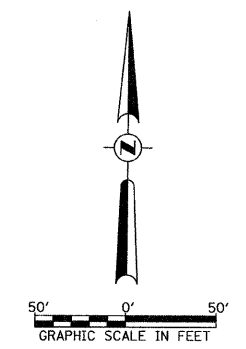
ROUTE NO.	SECTION	COUNTY	TOTAL SHEETS	SHEET NO.
CH 12	*	CASS	15	5
FED. ROAD DIST. NO. 7		ILLINOIS	PROJECT BRS-575(306)	
*00-00063-00-BR			CONTRACT # 93515	

DATE	
BY	
PLAN	
NO.	
NO.	
NO.	
NO.	
NO.	



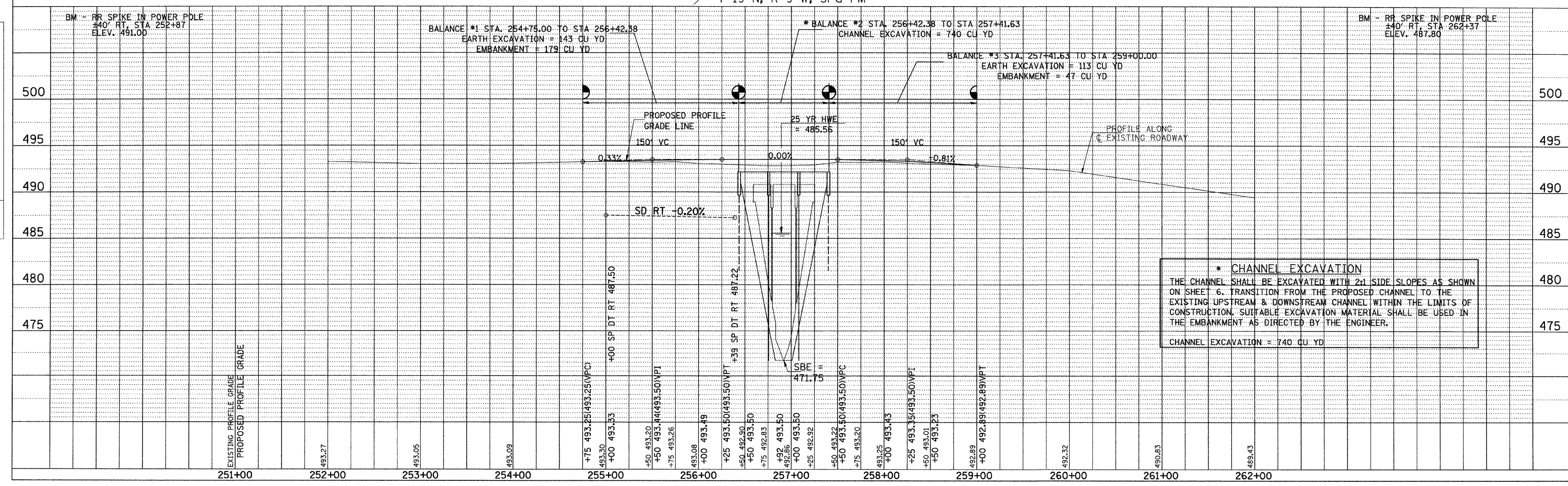
**LEGEND**

- TRANSITION TO OR FROM EXISTING TO PROPOSED TYPICAL SECTION
- PROPOSED RIPRAP PLACEMENT
- SPECIAL DITCH WITH FLOW DIRECTION
- BURIED TELEPHONE CABLE



SECTION 25  
T 19 N, R 9 W, 3rd PM

DATE	
BY	
PROFILE	
NO.	
NO.	
NO.	
NO.	
NO.	



**\* CHANNEL EXCAVATION**  
THE CHANNEL SHALL BE EXCAVATED WITH 2:1 SIDE SLOPES AS SHOWN ON SHEET 6. TRANSITION FROM THE PROPOSED CHANNEL TO THE EXISTING UPSTREAM & DOWNSTREAM CHANNEL WITHIN THE LIMITS OF CONSTRUCTION. SUITABLE EXCAVATION MATERIAL SHALL BE USED IN THE EMBANKMENT AS DIRECTED BY THE ENGINEER.  
CHANNEL EXCAVATION = 740 CU YD