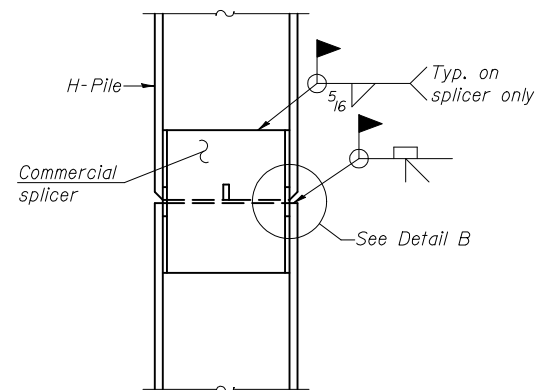
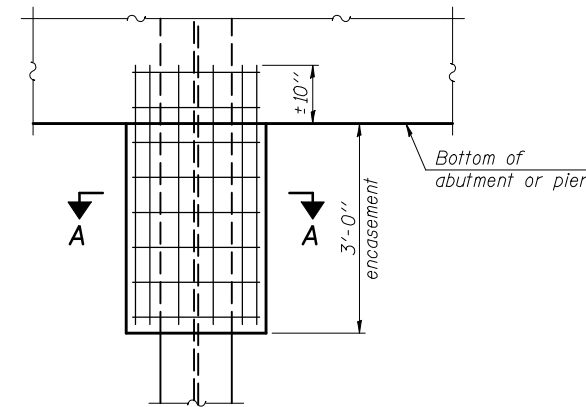


**STEEL PILE TABLE**

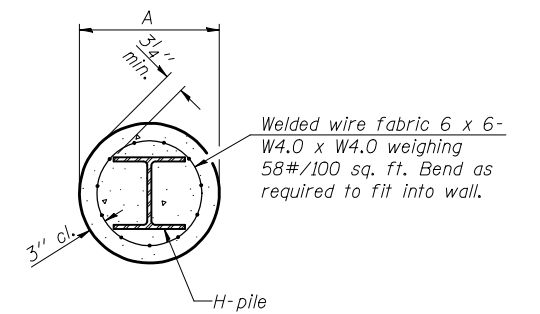
Designation	Depth d	Flange width b <sub>f</sub>	Web and Flange thickness t	Encasement diameter A
HP 12x53	11 <sup>3</sup> / <sub>4</sub> "	12"	7 <sup>1</sup> / <sub>16</sub> "	24"
HP 14x102	14"	14 <sup>3</sup> / <sub>4</sub> "	1 <sup>1</sup> / <sub>16</sub> "	30"



**ELEVATION**



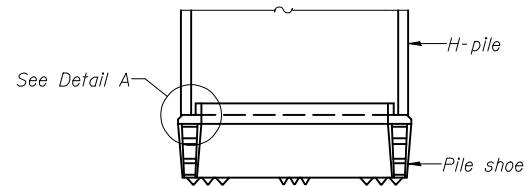
**ELEVATION**



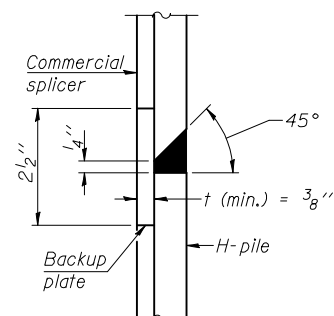
**SECTION A-A**

Note:  
Forms for encasement may be omitted when soil conditions permit.

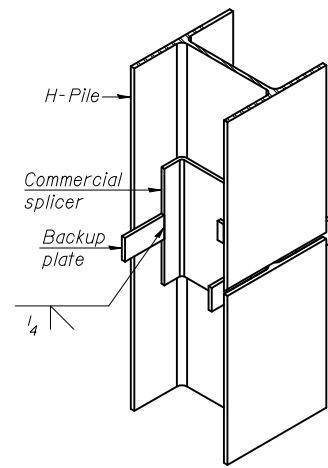
**PILE ENCASEMENT**



**ELEVATION**

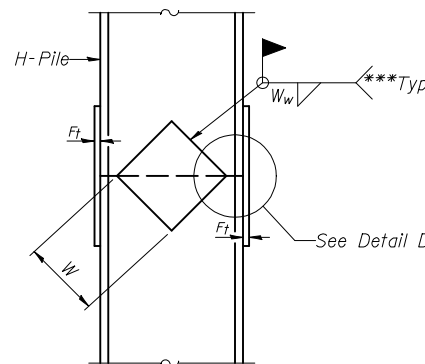


**DETAIL B**

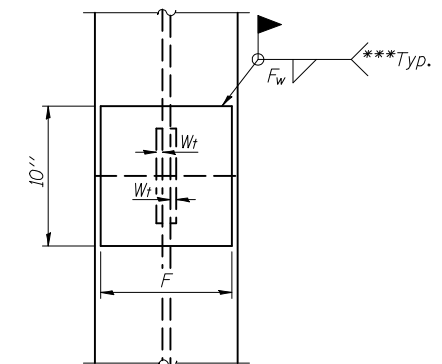


**ISOMETRIC VIEW**

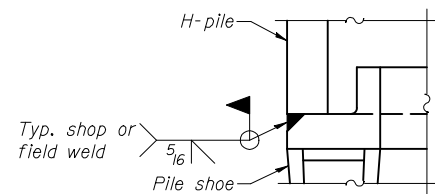
**WELDED COMMERCIAL SPLICE**



**ELEVATION**

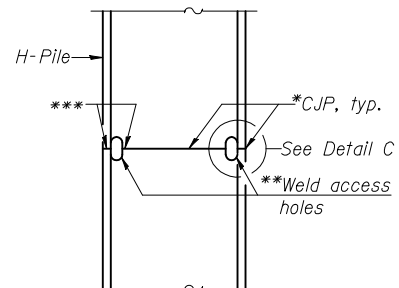


**END VIEW**

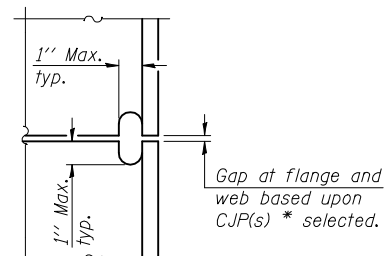


**DETAIL A**

**H-PILE SHOE ATTACHMENT**

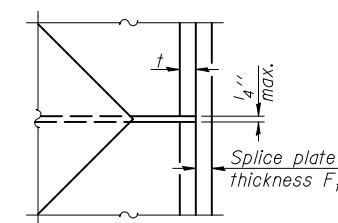


**ELEVATION**



**DETAIL C**

**COMPLETE PENETRATION WELD SPLICE**



**DETAIL D**

**WELDED PLATE FIELD SPLICE**

Designation	F	F <sub>t</sub>	F <sub>w</sub>	W	W <sub>t</sub>	W <sub>w</sub>
HP 12x53	10"	5 <sup>5</sup> / <sub>8</sub> "	1/2"	6 <sup>1</sup> / <sub>2</sub> "	1/2"	3 <sup>3</sup> / <sub>8</sub> "
HP 14x102	12 <sup>1</sup> / <sub>2</sub> "	7 <sup>7</sup> / <sub>8</sub> "	3/4"	7 <sup>3</sup> / <sub>4</sub> "	5 <sup>5</sup> / <sub>8</sub> "	1/2"

DESIGNED	CJC
CHECKED	MEB
DRAWN	UJ
CHECKED	MEB

**HR**  
HURST-ROSCHKE  
ENGINEERS, INC.  
PROFESSIONAL DESIGN NUMBER: 184-000298

- \* Use joint conforming to Figure 3.4 in AWS D1.1, Structure Welding Code - Steel.
- \*\* Preparation per Fig. 5.2 in AWS D1.1, Structure Welding Code - Steel.
- \*\*\* Interrupt welds 1/4" from end of each pile.

Note:  
The steel H-piles shall be according to AASHTO M270 Grade 50.

**HP PILE DETAILS  
STRUCTURE NO. 010-0285**

SHEET NO. 17 20 SHEETS	F.A.I. RTE. 74	SECTION (10-6HB-5)BR	COUNTY CHAMPAIGN	TOTAL SHEETS 63	SHEET NO. 29
	SN 010-0285		CONTRACT NO. 90875		
FED. ROAD DIST. NO. 5 ILLINOIS FED. AID PROJECT					