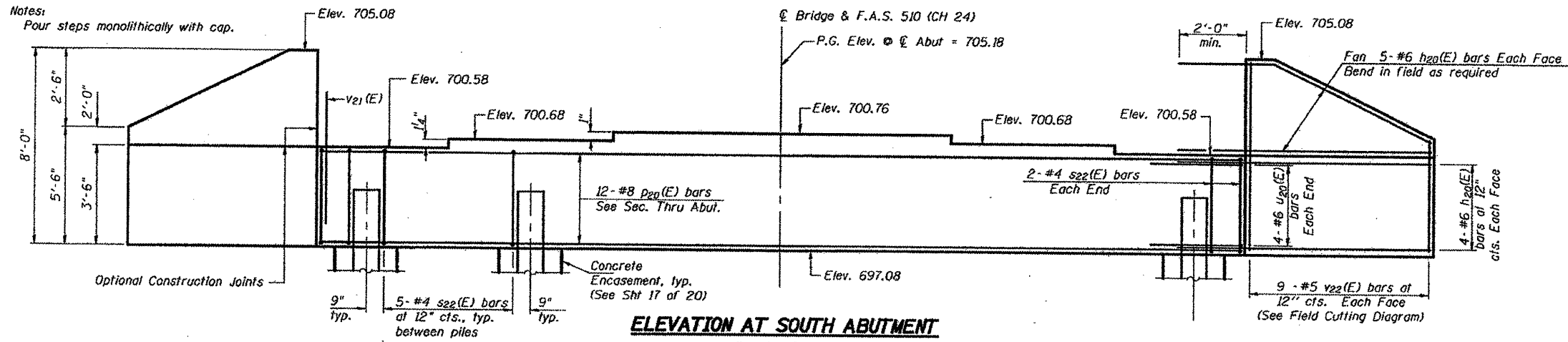
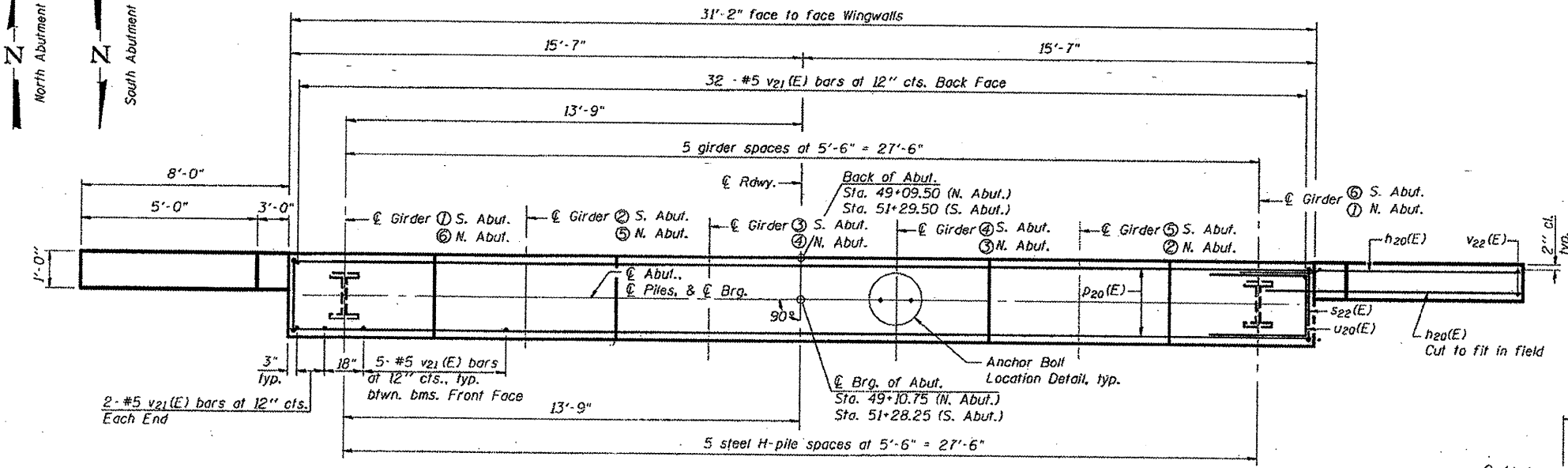
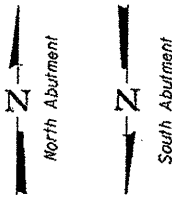


Notes:
Pour steps monolithically with cap.



ELEVATION AT SOUTH ABUTMENT

(Looking South)
(North Abutment similar, except as noted)



PLAN

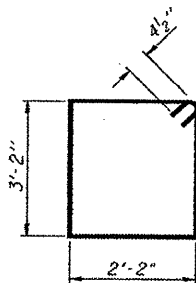
(South Abutment shown)
(North Abutment rotated by 180°)

N. ABUT. PILE DATA

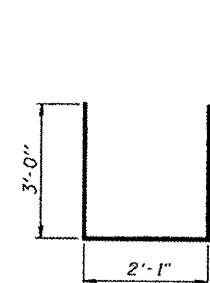
Type: HP 12x53
Nominal Required Bearing: 419 kips
Factored Resistance Available: 209 kips
Est. Length: 77'
No. Production Piles: 5
No. Test Piles: 1

S. ABUT. PILE DATA

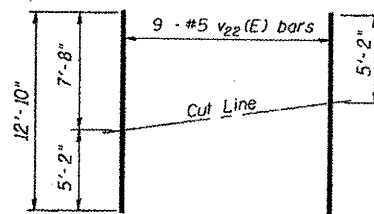
Type: HP 12x53
Nominal Required Bearing: 419 kips
Factored Resistance Available: 209 kips
Est. Length: 79'
No. Production Piles: 5
No. Test Piles: 1



BAR S22(E)

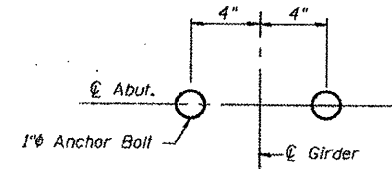


BAR U20(E)

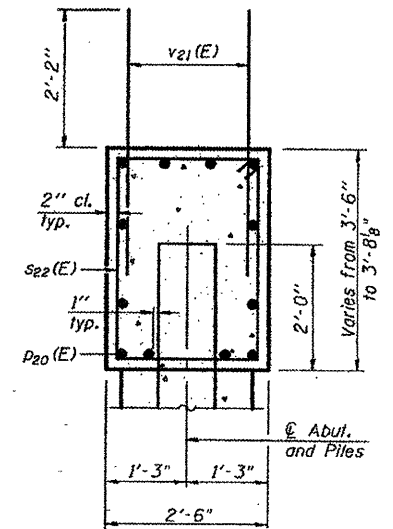


FIELD CUTTING DIAGRAM

Order V22(E) full length, Cut as shown and use remainder of bars in opposite face.



ANCHOR BOLT LOCATION DETAIL



SEC. THRU ABUT.

BILL OF MATERIAL (TWO ABUTMENTS)

Bar	No.	Size	Length	Shape
h20(E)	72	#6	10'-7"	—
P20(E)	24	#8	30'-10"	—
S22(E)	58	#4	11'-5"	□
U20(E)	16	#6	8'-1"	—
V21(E)	122	#5	4'-4"	—
V22(E)	36	#5	12'-10"	—
Structure Excavation		Cu. Yd.	208.0	
Concrete Structures		Cu. Yd.	29.1	
Reinforcement Bars, Epoxy Coated		Pound	4,795	
Furnishing Steel Piles HP12x53		Foot	780	
Driving Piles		Foot	780	
Test Pile Steel HP12x53		Each	2	
Concrete Encasement		Cu. Yd.	4.2	

For details of Bar Splicers, see sheet 18 of 20.
For details of piles and Concrete Encasement, see sheet 17 of 20.
*Includes 122.0 Cu. Yd. Structure Excavation for Porous Granular Embankment, Special.

ABUTMENTS STRUCTURE NO. 010-0285

DESIGNED	CJC
CHECKED	MEB
DRAWN	UJ
CHECKED	MEB



Notes:
Piles shall be driven through 2'-0" diameter precored holes extending to elevation 679.00 according to Article 512.09(c) of the Standard Specifications. Cost included in driving piles.

SHEET NO. 15	F.A.I. RTE.	SECTION	COUNTY	TOTAL SHEETS	SHEET NO.
	74	(10-6HB-5)BR	CHAMPAIGN	63	27
20 SHEETS	SN 010-0285		CONTRACT NO. 90875		
FED. ROAD DIST. NO. 5 ILLINOIS FED. AID PROJECT					