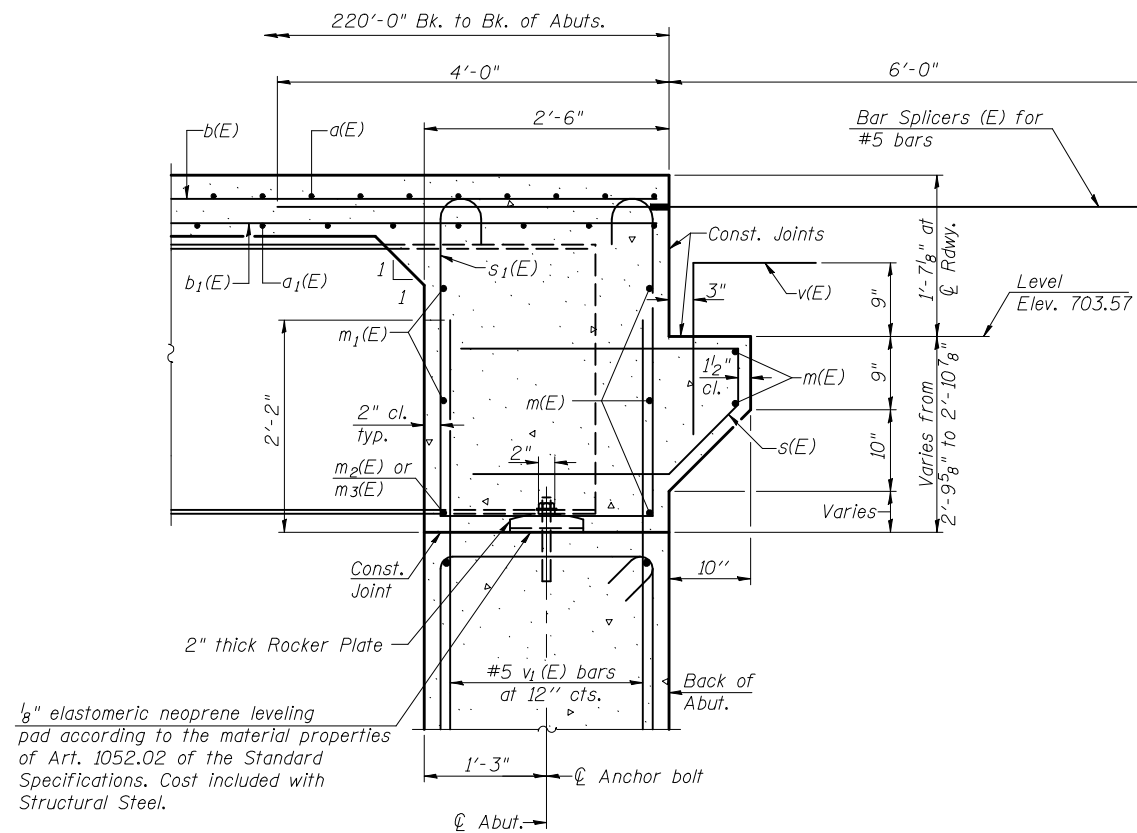


DIAPHRAGM ELEVATION AT ABUTMENT

Notes:
 Reinforcement bars in diaphragm are billed with superstructure on sheet 8 of 20.
 Concrete in diaphragm is included with Concrete Superstructure on sheet 8 of 20.
 For details of bars s(E) & s1(E) see sheet 8 of 20.
 The s(E) and s1(E) bars shall be placed parallel to the beams.

MIN. BAR LAP
 #6 bar = 2'-7"



SECTION A-A

**INTEGRAL ABUTMENT
 DIAPHRAGM DETAILS
 STRUCTURE NO. 010-0285**

DESIGNED	CJC / MEB
CHECKED	JSP
DRAWN	UJ
CHECKED	MEB

HR
HURST-ROSCHÉ
ENGINEERS, INC.
 PROFESSIONAL DESIGN NUMBER: 184-00098

SHEET NO. 9 20 SHEETS	F.A.I. RTE. 74	SECTION (10-6HB-5)BR	COUNTY CHAMPAIGN	TOTAL SHEETS 63	SHEET NO. 21
	SN 010-0285		CONTRACT NO. 90875		
FED. ROAD DIST. NO. 5 ILLINOIS FED. AID PROJECT					