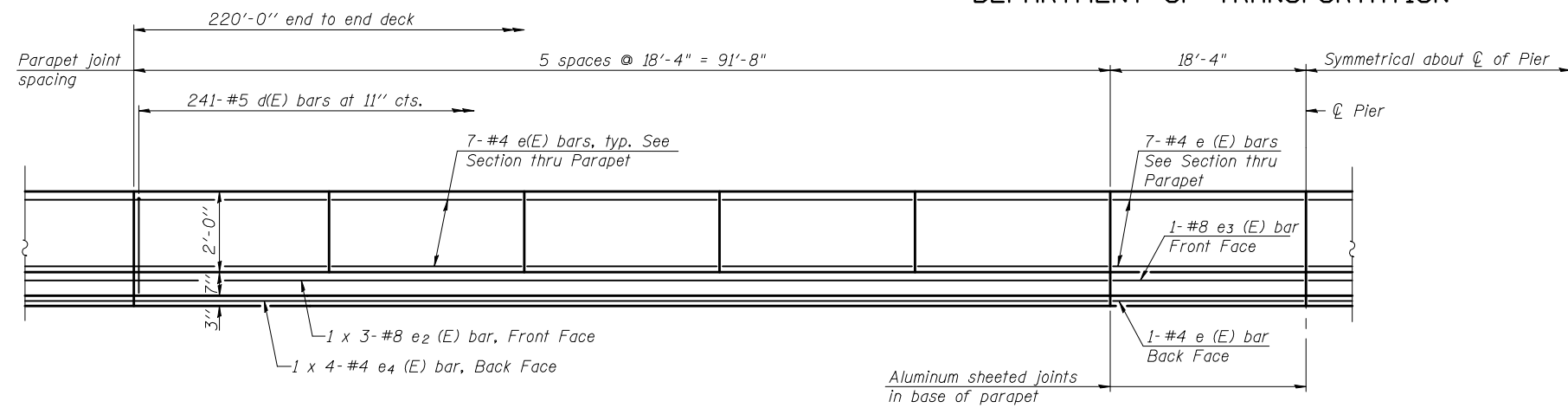


STATE OF ILLINOIS  
DEPARTMENT OF TRANSPORTATION

**SUPERSTRUCTURE  
BILL OF MATERIAL**

Bar	No.	Size	Length	Shape
a(E)	378	#5	30'-4"	—
a <sub>1</sub> (E)	265	#5	29'-8"	—
a <sub>2</sub> (E)	756	#6	6'-0"	—
a <sub>3</sub> (E)	32	#5	1'-6"	—
b(E)	272	#5	29'-5"	—
b <sub>1</sub> (E)	62	#6	29'-0"	—
b <sub>2</sub> (E)	216	#5	26'-4"	—
d(E)	482	#5	5'-7"	⌋
d <sub>1</sub> (E)	482	#5	6'-6"	⌋
e(E)	172	#4	18'-0"	—
e <sub>2</sub> (E)	12	#8	32'-9"	—
e <sub>3</sub> (E)	4	#8	18'-0"	—
e <sub>4</sub> (E)	16	#4	23'-10"	—
m(E)	10	#6	30'-10"	—
m <sub>1</sub> (E)	24	#6	7'-5"	—
m <sub>2</sub> (E)	10	#6	5'-2"	—
m <sub>3</sub> (E)	4	#6	1'-6"	—
s(E)	72	#5	6'-7"	⌋
s <sub>1</sub> (E)	58	#4	10'-6"	⌋
v(E)	62	#5	3'-4"	⌋
Reinforcement Bars, Epoxy Coated		Pound	55,575	
Concrete Superstructure		Cu. Yds.	251.0	

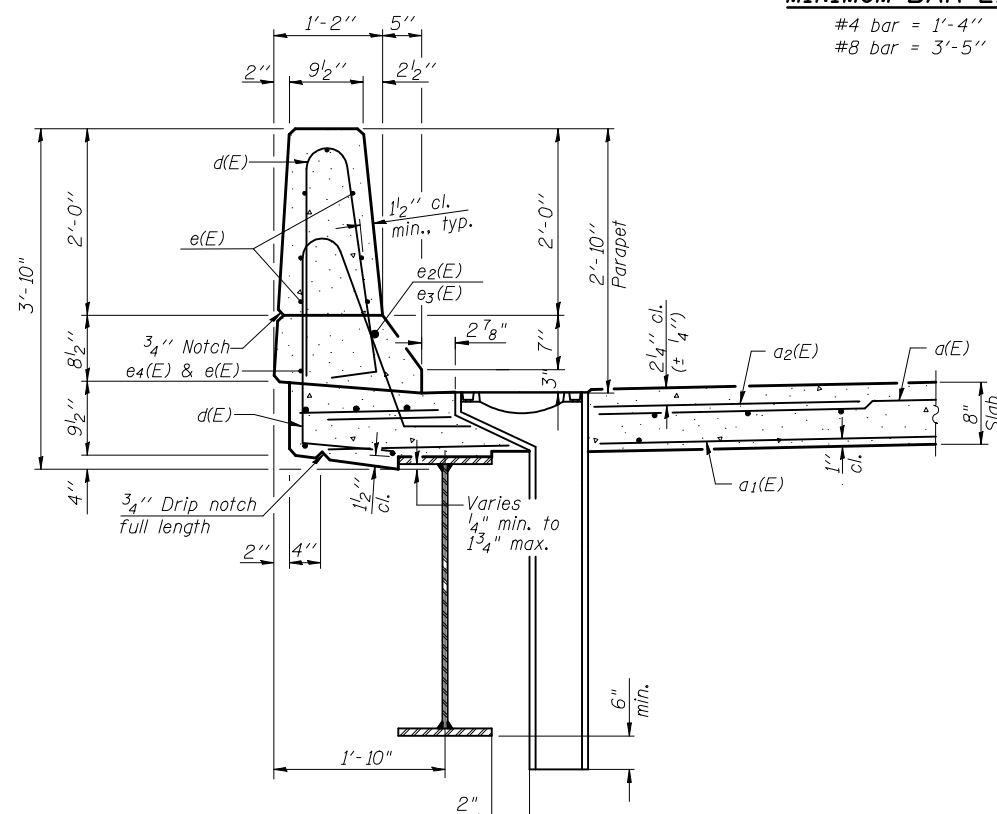
Bars indicated thus 1 x 4-#4 etc. indicates 1 line of bars with 4 lengths per line.



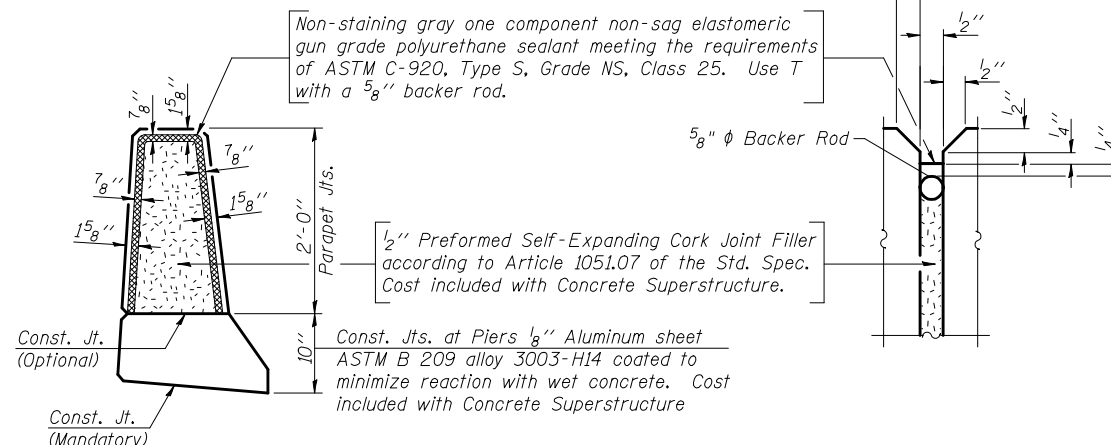
**INSIDE ELEVATION OF PARAPET**

**MINIMUM BAR LAP**

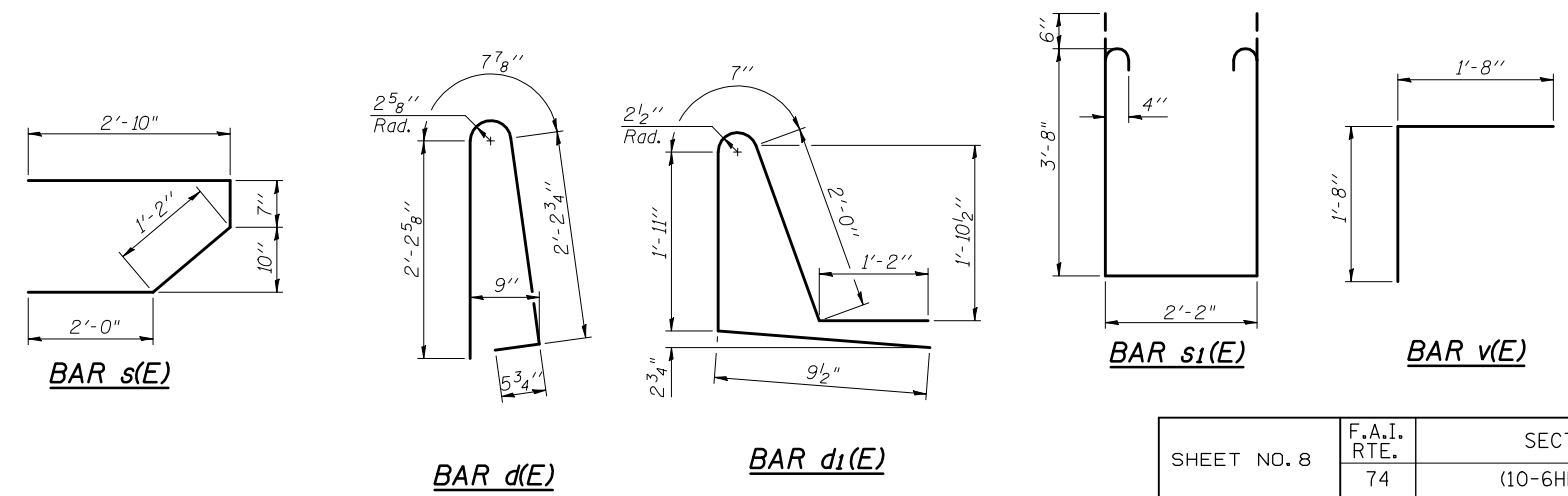
#4 bar = 1'-4"  
#8 bar = 3'-5"



**SECTION THRU PARAPET**

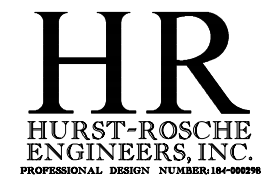


**PARAPET JOINT DETAILS**



**SUPERSTRUCTURE DETAILS  
STRUCTURE NO. 010-0285**

DESIGNED	CJC / MEB
CHECKED	JSP
DRAWN	UJ
CHECKED	MEB



SHEET NO. 8 20 SHEETS	F.A.I. RTE.	SECTION	COUNTY	TOTAL SHEETS	SHEET NO.
	74	(10-6HB-5)BR	CHAMPAIGN	63	20
SN 010-0285			CONTRACT NO. 90875		
FED. ROAD DIST. NO. 5 ILLINOIS FED. AID PROJECT					