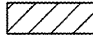
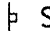

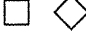
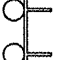

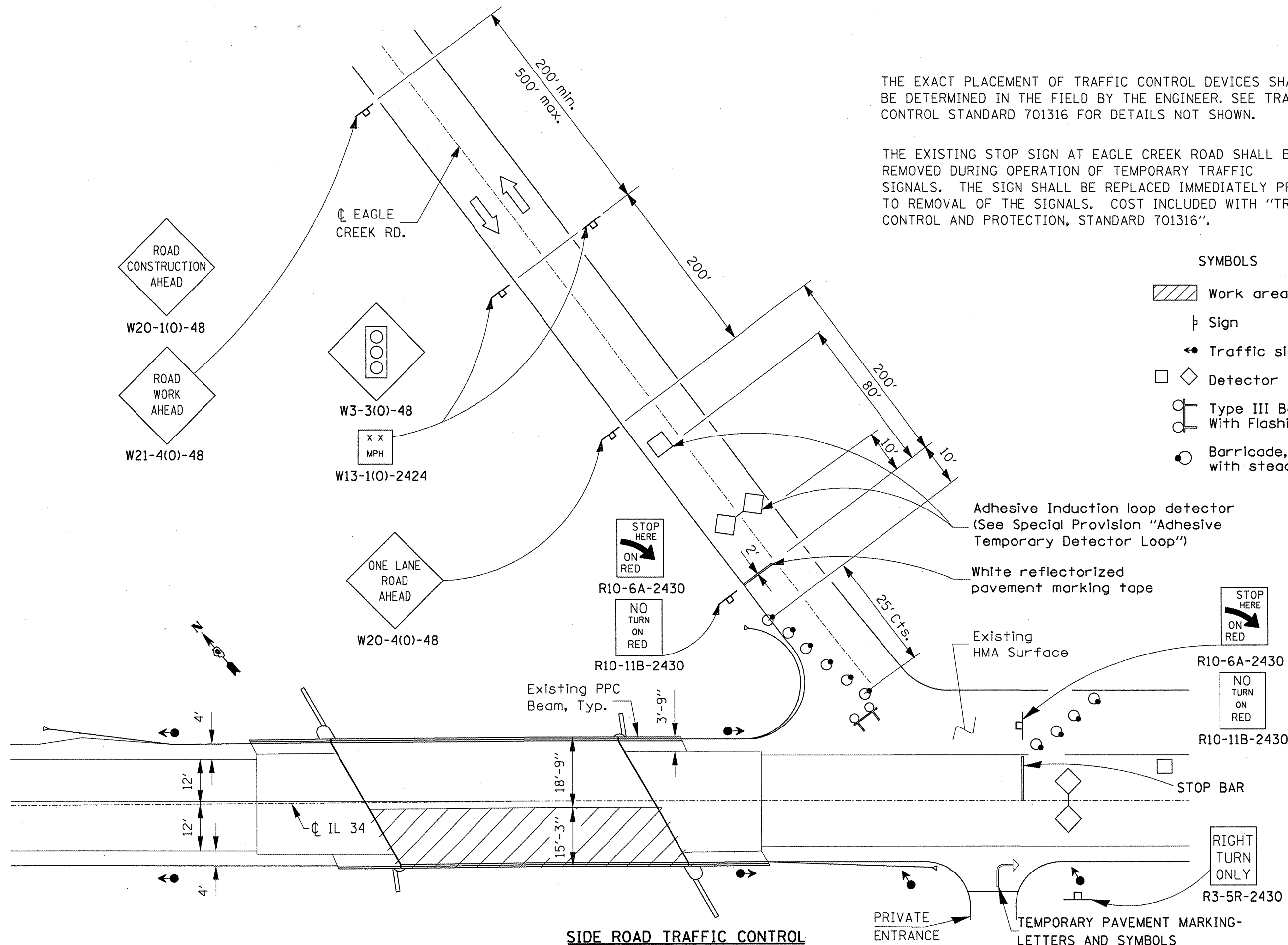


THE EXACT PLACEMENT OF TRAFFIC CONTROL DEVICES SHALL BE DETERMINED IN THE FIELD BY THE ENGINEER. SEE TRAFFIC CONTROL STANDARD 701316 FOR DETAILS NOT SHOWN.

THE EXISTING STOP SIGN AT EAGLE CREEK ROAD SHALL BE REMOVED DURING OPERATION OF TEMPORARY TRAFFIC SIGNALS. THE SIGN SHALL BE REPLACED IMMEDIATELY PRIOR TO REMOVAL OF THE SIGNALS. COST INCLUDED WITH "TRAFFIC CONTROL AND PROTECTION, STANDARD 701316".

**SYMBOLS**

-  Work area
-  Sign
-  Traffic signal
-  Detector loops
-  Type III Barricade With Flashing Lights
-  Barricade, or drum with steady burning lights



**SIDE ROAD TRAFFIC CONTROL**

PRIVATE ENTRANCE  
TEMPORARY PAVEMENT MARKING- LETTERS AND SYMBOLS

FILE NAME =	USER NAME = gautneyrk	DESIGNED -	REVISED -	<b>STATE OF ILLINOIS DEPARTMENT OF TRANSPORTATION</b>	S.B.I. RTE.	SECTION	COUNTY	TOTAL SHEETS	SHEET NO.
ca:\pwr\work\PIWIDOT\GAUTNEYRK\d0156602\78153-sht-pln.dgn	DRAWN -	REVISED -	REVISED -		34	3(1-1)	POPE	17	17
PLOT SCALE = 25/4:29 5/8 ' / IN.	CHECKED -	REVISED -	REVISED -		CONTRACT NO. 78153				
PLOT DATE = 12/9/2009	DATE -	REVISED -	REVISED -		ILLINOIS FED. AID PROJECT				