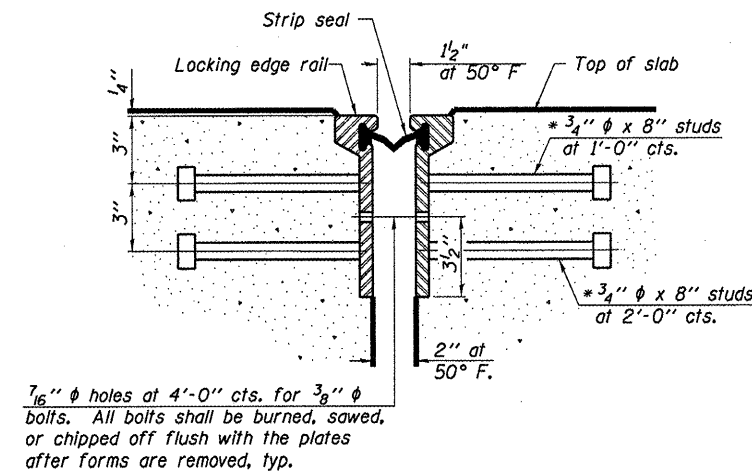
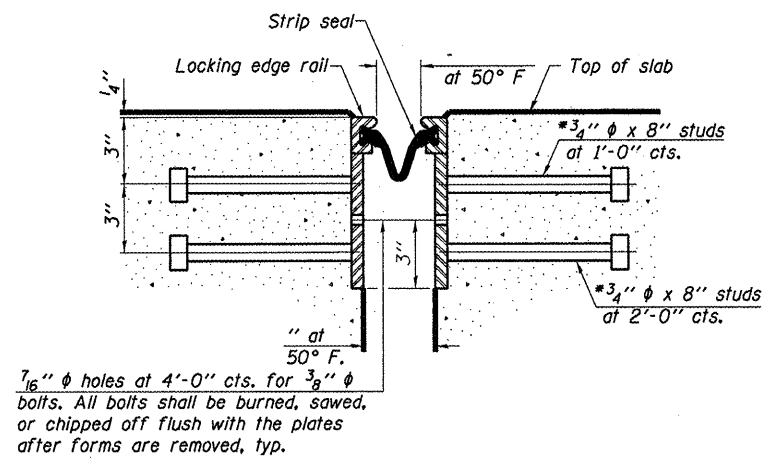


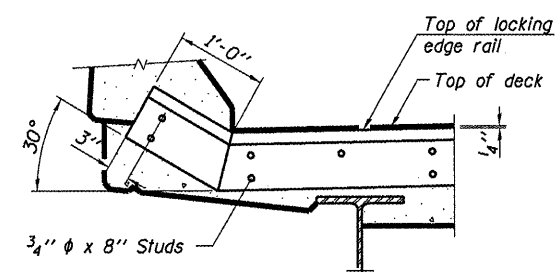
* Granular or solid flux filled headed studs conforming to Article 1006.32 of the Std. Specs., automatically end welded.



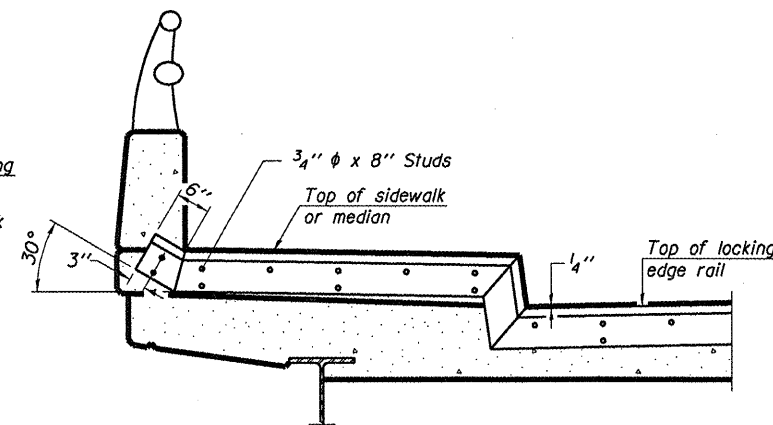
SECTION THRU ROLLED RAIL JOINT



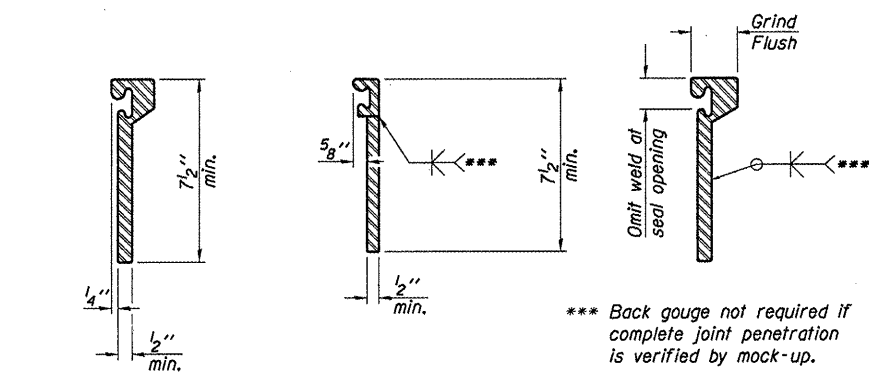
SECTION THRU WELDED RAIL JOINT



AT PARAPET
See Section A-A for end treatment of skews > 30°.



AT SIDEWALK OR MEDIAN
Shorter plates with a single row of studs at 12\"/>



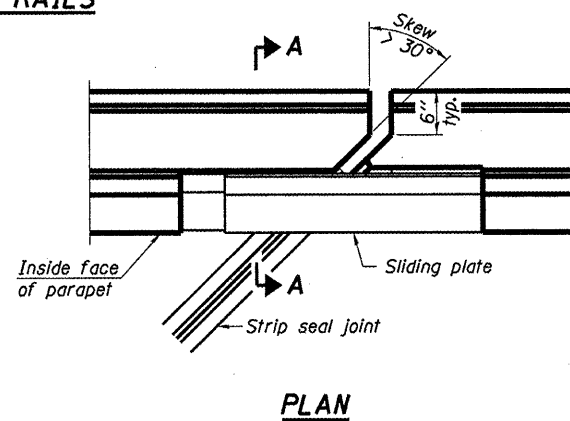
ROLLED EXTRUDED RAIL **WELDED RAIL**

*** Back gouge not required if complete joint penetration is verified by mock-up.

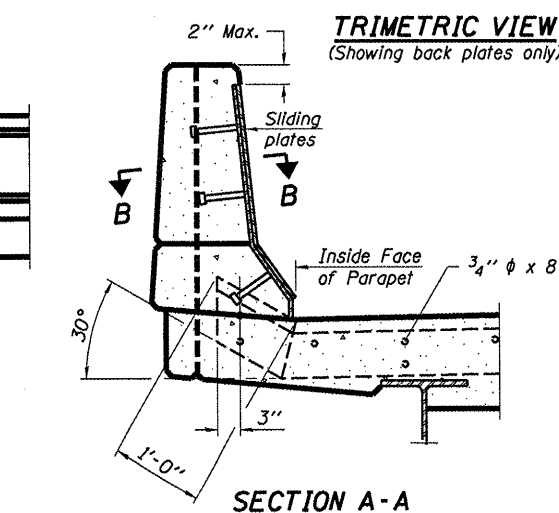
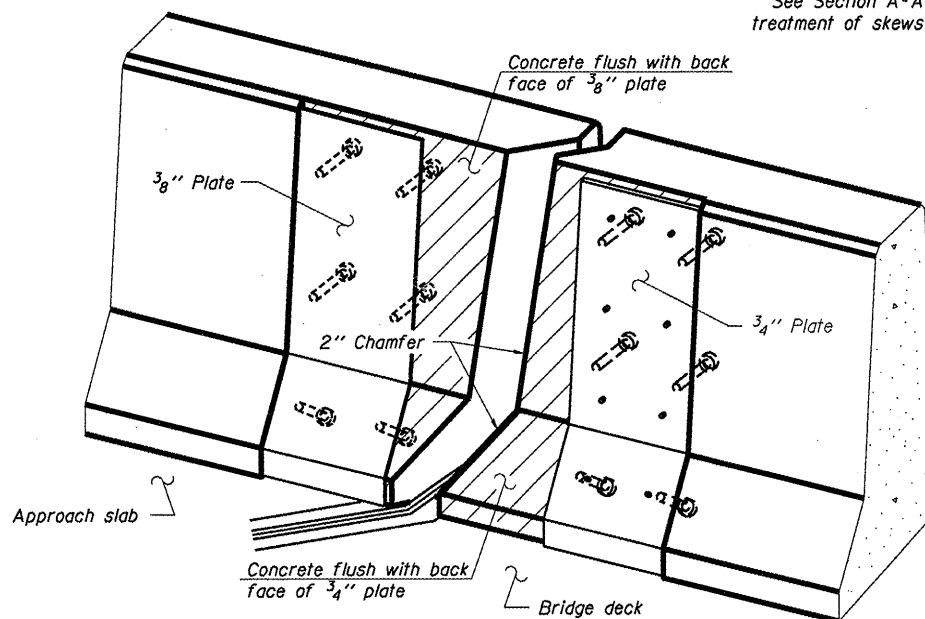
LOCKING EDGE RAIL SPLICE

The inside of the locking edge rail groove shall be free of weld residue.
Rolled rail shown, welded rail similar.

LOCKING EDGE RAILS

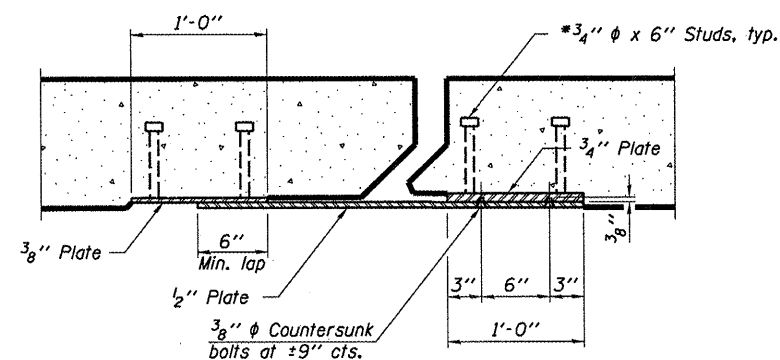


PLAN



SECTION A-A

POINT BLOCK DETAILS
(for skews > 30°)



SECTION B-B

TYPICAL END TREATMENTS

Notes:
The strip seal shall be made continuous and shall have a minimum thickness of 1/4\"/>

BILL OF MATERIAL

Item	Unit	Total
Preformed Joint Strip Seal	Foot	78

PREFORMED JOINT STRIP SEAL STRUCTURE NO. 076-0001

EJ-SSJ 11-1-09
REVISED PARAPET 12/8/09 RKG

STATE OF ILLINOIS
DEPARTMENT OF TRANSPORTATION

S.B.I. RTE.	SECTION	COUNTY	TOTAL SHEETS	SHEET NO.
34	3(I)-1	POPE	17	12
CONTRACT NO. 78153				ILLINOIS FED. AID PROJECT

FILE NAME	USER NAME	DESIGNED	REVISED
ca\pwwork\VPWIDOT\GAUTNEYRK\d0156602\78153-sht-p\In.dgn	gautneyrk	---	---
PLOT SCALE = 1/4"=1'-0"	5/8" = 1" / IN.	CHECKED	REVISED
PLOT DATE = 12/9/2009	DATE	---	---