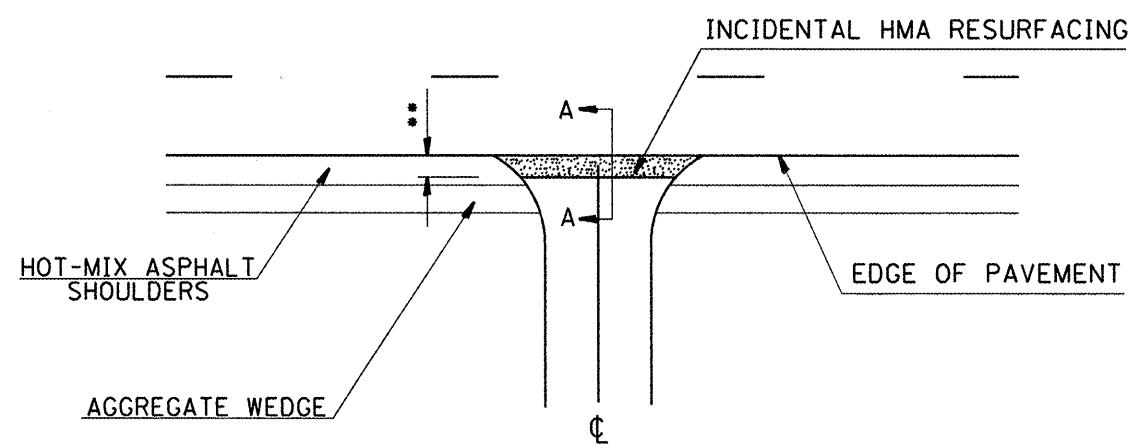


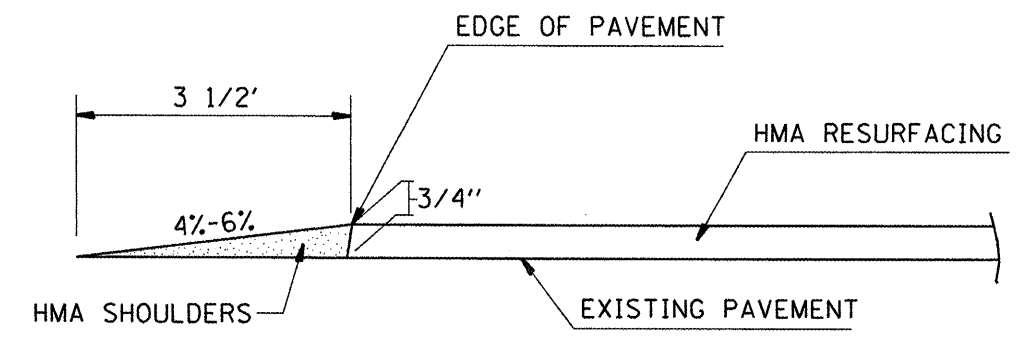
TRANSITION DETAIL
SECTION A-A



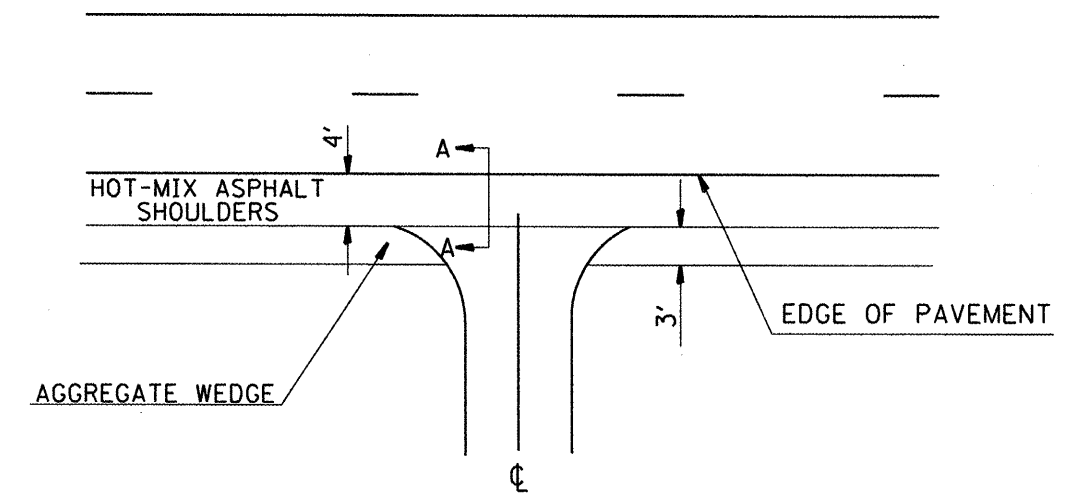
SIDE ROAD DETAIL

•EOP ELEVATION CHANGE	••TOTAL TRANSITION LENGTH
3/4"	3.5'
1"	5'
1 1/2"	7.5'
2"	10'
2 1/2"	12.5'
3"	15'
3 1/2"	17.5'
4"	20'
4 1/2"	22.5'
5"	25'
5 1/2"	27.5'
6"	30'

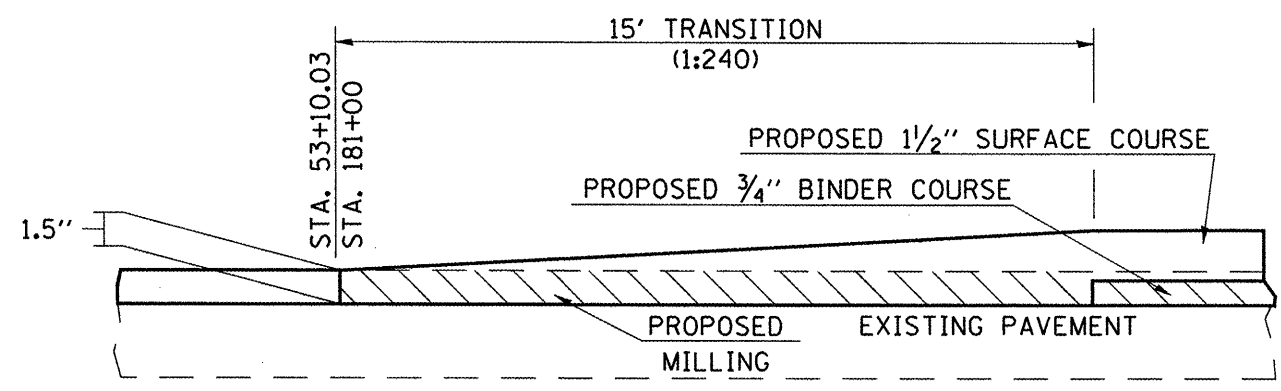
NOTE:
WHERE THE HMA TRANSITION IS MATCHING INTO AN EXISTING HMA SIDE ROAD SURFACE, A MILLED BUTT JOINT SHALL BE CONSTRUCTED WITHIN THE LIMITS OF THE TOTAL TRANSITION LENGTH ON THE LOCAL ROUTE.



FEATHEREDGE DETAIL
SECTION A-A



COMMERCIAL & PRIVATE
ENTRANCE DETAIL



BUTT JOINT TO BE CONSTRUCTED AT BEGINNING AND END OF PROJECT.

- STA. 50+58.40 (BEGINNING OF PROJECT)
- STA. 181+00 (JUST WEST OF MOONGLOW RD.)

FILE NAME	USER NAME	DESIGNED	REVISED
#FILE#	#USER#	---	---
		DRAWN	REVISED
		---	---
		CHECKED	REVISED
		---	---
		DATE	REVISED
		---	---

STATE OF ILLINOIS
DEPARTMENT OF TRANSPORTATION

BUTT JOINTS/SIDEROADS AND ENTRANCE/FEATHEREDGE DETAILS

F.A.R. RTE.	SECTION	COUNTY	TOTAL SHEETS	SHEET NO.
805	IOIRS	MARION	62	60
SCALE: _____			CONTRACT NO. 76D46	
SHEET NO. _____ OF _____ SHEETS			FED. ROAD DIST. NO. _____ ILLINOIS FED. AID PROJECT	