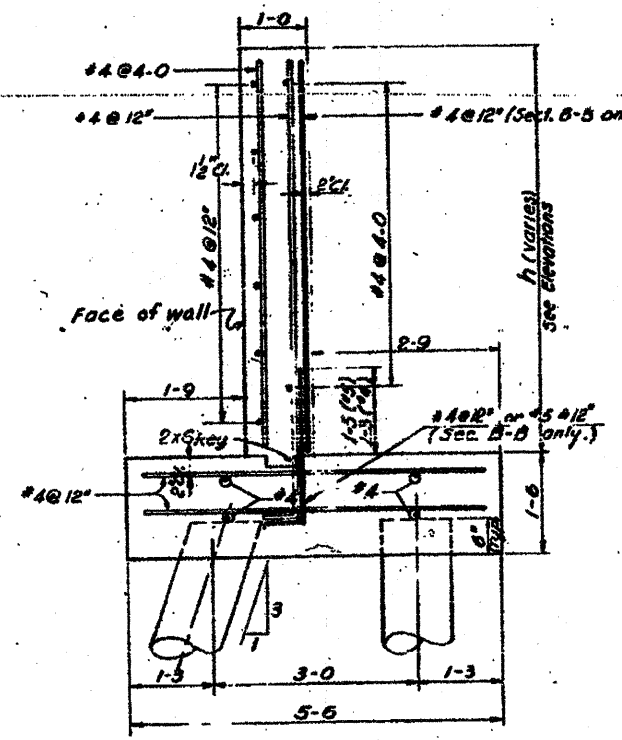
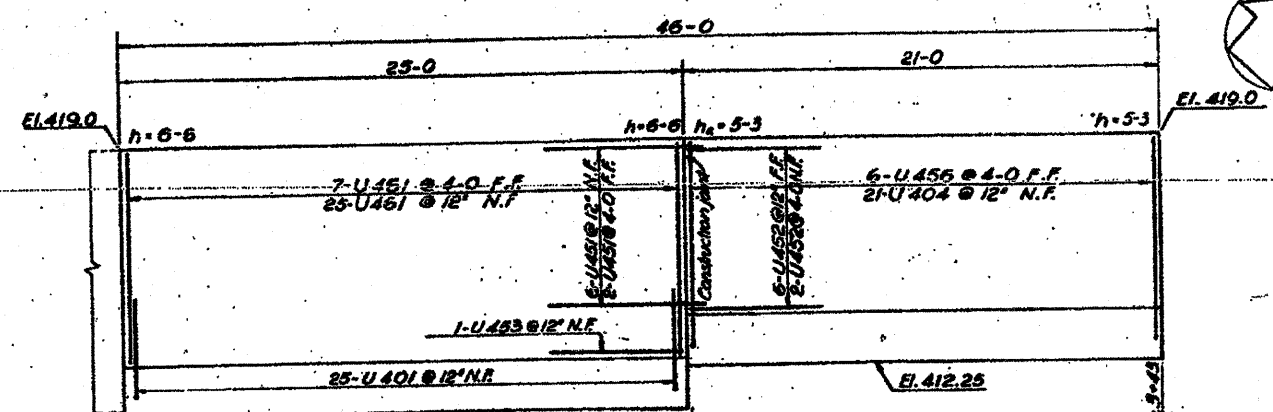
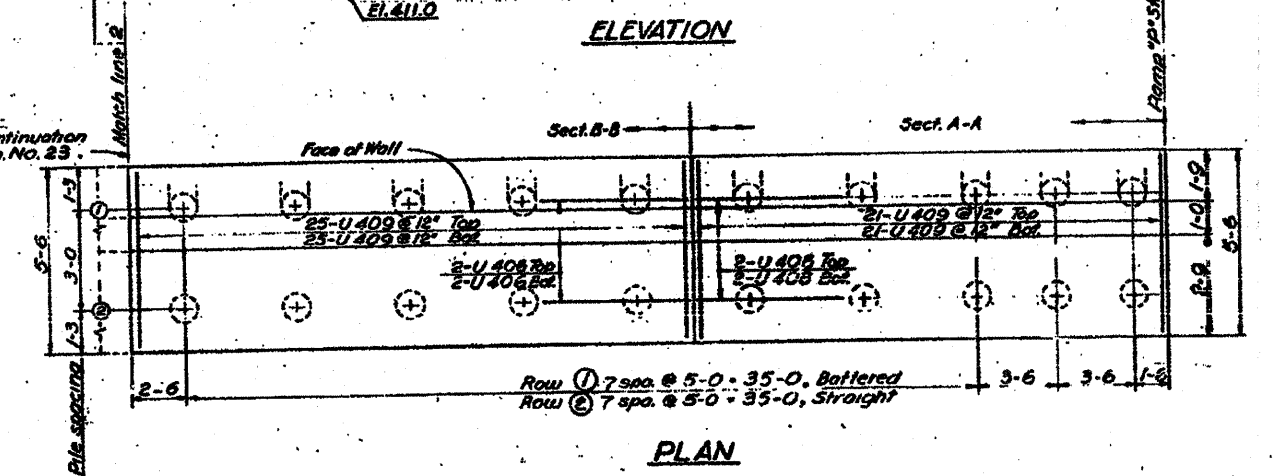


**PILE DATA**  
 89 - 15 Ton piles. Estimated average length 20 ft.  
 Test Pile indicated thus ⊕

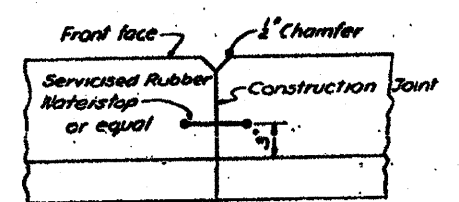


| BAR SCHEDULE |      |          |      |        |       |
|--------------|------|----------|------|--------|-------|
| LOCATION     | MARK | NO. REQ. | SIZE | LENGTH | SHAPE |
| FOOTING      | U501 | 50       | #5   | 3-5    | ┘     |
|              | U401 | 50       | #4   | 3-3    | ┘     |
|              | U402 | 12       | #4   | 6-1    | ┘     |
|              | U403 | 13       | #4   | 6-3    | ┘     |
|              | U404 | 33       | #4   | 6-8    | ┘     |
|              | U405 | 13       | #4   | 6-10   | ┘     |
|              | U406 | 16       | #4   | 24-6   | —     |
|              | U407 | 16       | #4   | 25-6   | —     |
|              | U408 | 4        | #4   | 20-6   | —     |
|              | U409 | 442      | #4   | 5-0    | —     |
|              | U410 | 12       | #4   | 7-0    | ┘     |
|              | U411 | 13       | #4   | 7-2    | ┘     |
|              | U412 | 12       | #4   | 7-4    | ┘     |
| STEM         | U451 | 50       | #4   | 26-0   | —     |
|              | U452 | 8        | #4   | 20-9   | —     |
|              | U453 | 21       | #4   | 24-6   | —     |
|              | U454 | 3        | #4   | 4-6    | —     |
|              | U455 | 4        | #4   | 4-8    | —     |
|              | U456 | 9        | #4   | 5-1    | —     |
|              | U457 | 3        | #4   | 5-5    | —     |
|              | U458 | 4        | #4   | 5-7    | —     |
|              | U459 | 3        | #4   | 5-9    | —     |
|              | U460 | 4        | #4   | 5-11   | —     |
|              | U461 | 32       | #4   | 6-4    | —     |
|              | U462 | 28       | #4   | 6-8    | —     |
|              | U463 | 4        | #4   | 6-10   | —     |
|              | U464 | 60       | #4   | 7-7    | —     |
|              | U465 | 4        | #4   | 7-9    | —     |
|              | U466 | 4        | #4   | 5-3    | —     |
|              | U467 | 8        | #4   | 8-0    | —     |
|              | U468 | 10       | #4   | 4-2    | ┘     |
|              | U651 | 4        | #6   | 6-6    | ┘     |
| U652         | 4    | #6       | 7-7  | —      |       |

For continuation see Sh. No. 23

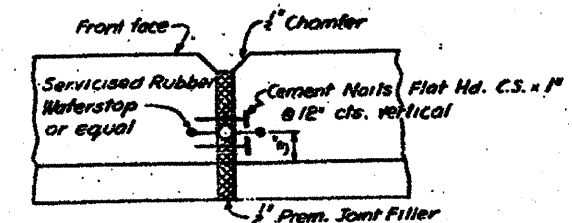


| BILL OF MATERIALS                   |          |       |
|-------------------------------------|----------|-------|
| CLASS "X" CONCRETE                  | C.Y.     | 117.7 |
| REINFORCEMENT BARS                  | Lbs.     | 5100  |
| TEST PILES (TIMBER)                 | Ea.      | 1     |
| FURN. CREOSOTED PILES (4" dia)      | Lin. Ft. | 1780  |
| DRIVING TIMBER PILES                | Lin. Ft. | 1780  |
| CLASS "A" EXCAVATION FOR STRUCTURES | C.Y.     | 432   |
| 6" PERF. C.M.P.                     | Lin. Ft. | 222   |

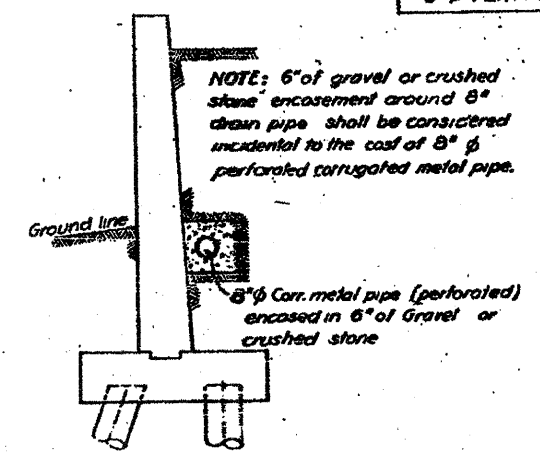


**NOTE**  
 Typical construction joint, expansion joint and drainage detail shown here are for battered walls, but they apply for walls that are not battered also.

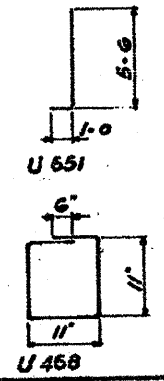
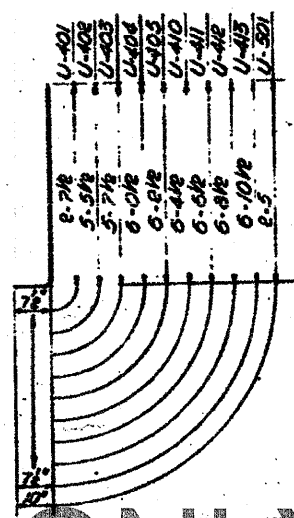
TYPICAL CONSTRUCTION JOINT



TYPICAL EXPANSION JOINT



TYPICAL DRAINAGE DETAIL  
 For Layout of Drainage see General Plan



STATE OF ILLINOIS  
 DEPARTMENT OF PUBLIC WORKS & BLDGS.  
 DIVISION OF HIGHWAYS  
 CITY OF EAST ST. LOUIS  
**EAST ST. LOUIS EXPRESSWAY**  
 RETAINING WALL "U"  
 DETAILS  
 H. W. LOCHNER, INC.  
 ENGINEERS  
 CHICAGO, ILLINOIS  
 DATE: APRIL 1958  
 SHEET NO. 24

Designed by: A.T.  
 Drawn by: E.L.C.  
 Checked by: K.X.K.

FOR INFORMATION ONLY

SHEET A-50  
 23/XX