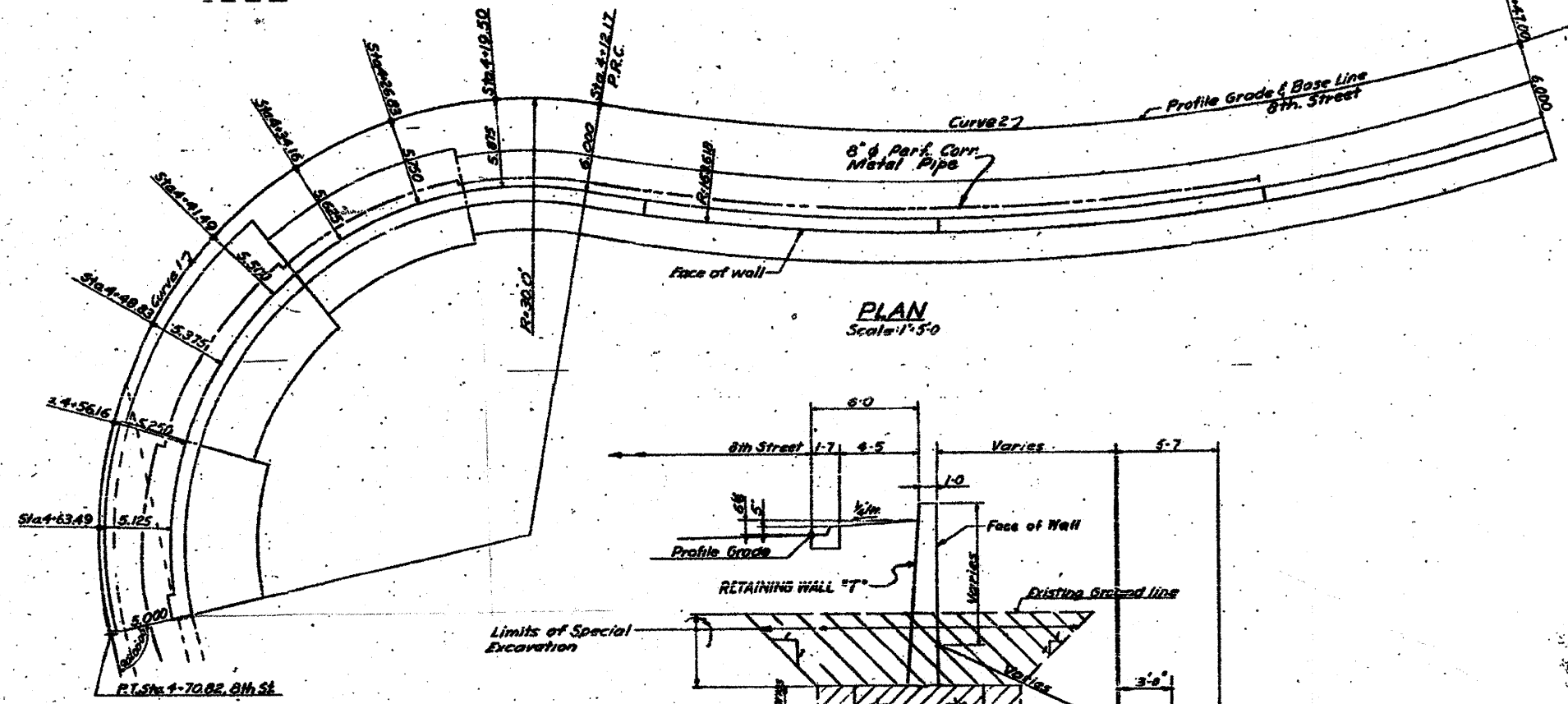


Note: All dimensions are along face of wall.

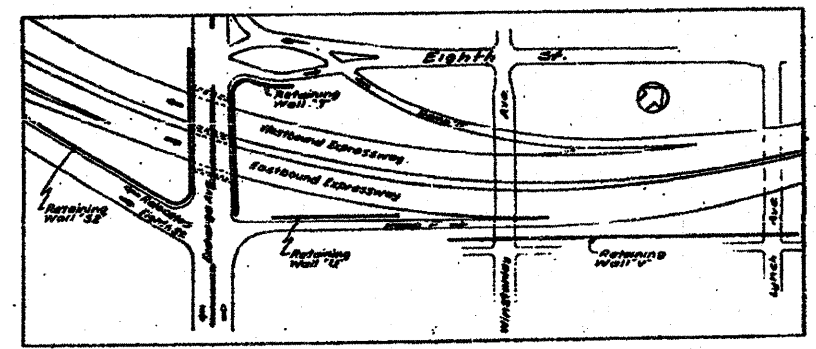
**ELEVATION**  
Scale: 1"=5'-0"

**EIGHTH STREET**  
Horizontal Curve Data

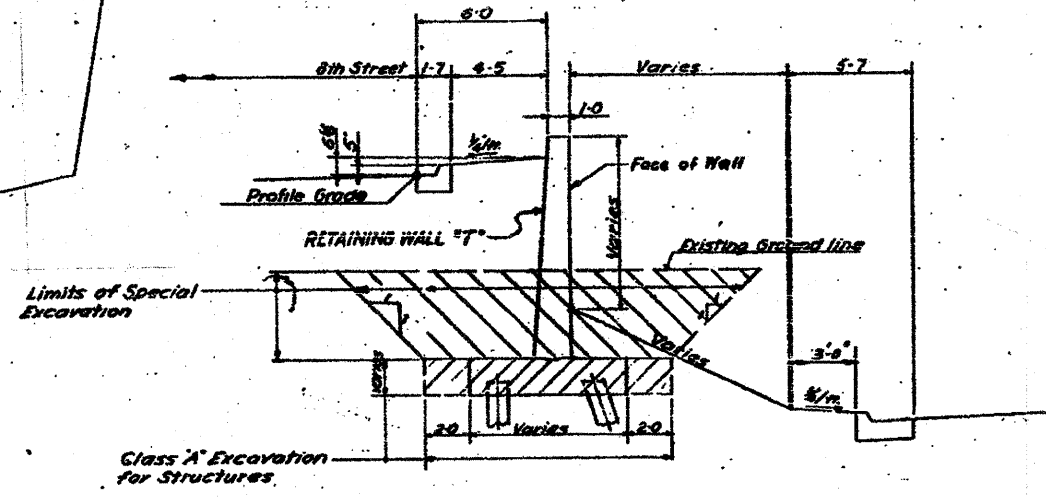
CURVE 1	CURVE 2
PI: Sta 4+56.66	PI: 3+71.15
Δ: 112°-01'-26"	Δ: 30°-46'-08"
D: 190°-59'-09"	D: 38°-34'-59"
R: 30-0	R: 156.618
L: 58.656	L: 99.10
T: 44.497	T: 43.09
E: 23.67	E: 5.77



**PLAN**  
Scale: 1"=5'-0"



**LOCATION PLAN**



**TYPICAL SECTION**  
Looking North

STATE OF ILLINOIS  
DEPARTMENT OF PUBLIC WORKS & BLDGS.  
DIVISION OF HIGHWAYS  
&  
CITY OF EAST ST. LOUIS  
**EAST ST. LOUIS EXPRESSWAY**

**RETAINING WALL "T"**  
GENERAL PLAN

H. W. LOCHNER, INC.  
ENGINEERS

DATE: APRIL 1958 CHICAGO, ILLINOIS SHEET NO. 19

Drawn by: EC  
Checked by: M. N.

FOR INFORMATION ONLY

SHEET A-45  
236 SS