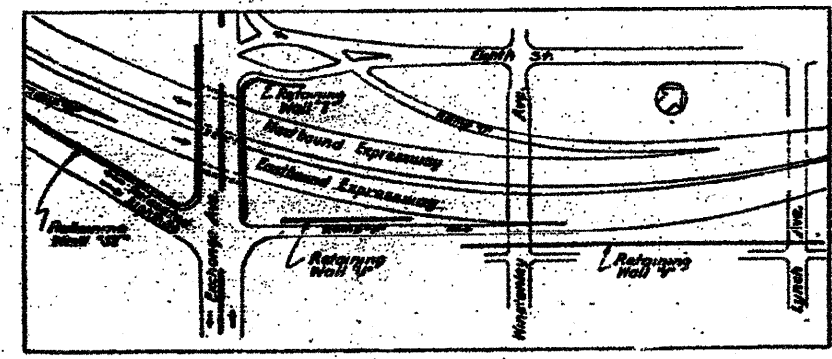
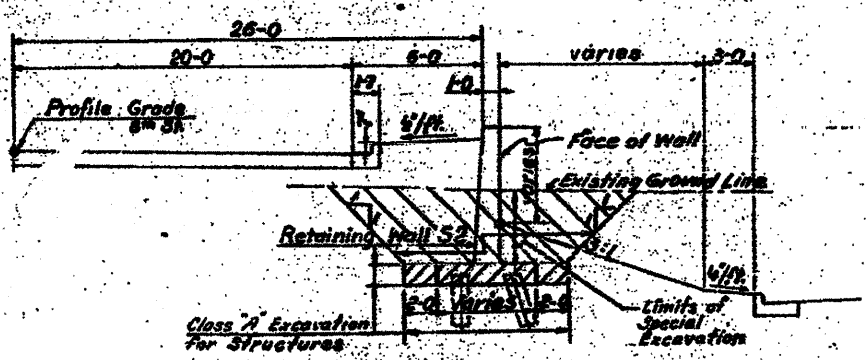
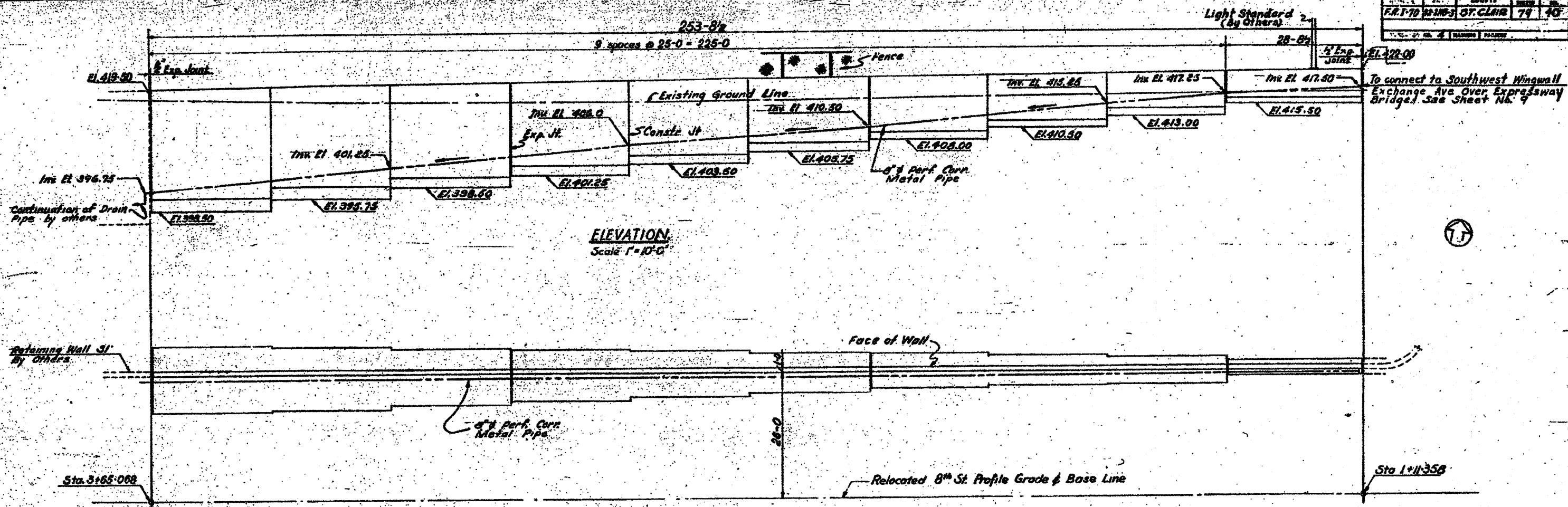


DATE	BY	CHECKED	SCALE
F.R.T. 70	W.M.S.	ST. CLAIR	74



STATE OF ILLINOIS
DEPARTMENT OF PUBLIC WORKS & BLDGS.
DIVISION OF HIGHWAYS
CITY OF EAST ST. LOUIS
EAST ST. LOUIS EXPRESSWAY
RETAINING WALL "S2"
GENERAL PLAN
H. W. LOCHNER, INC.
ENGINEERS
CHICAGO, ILLINOIS
DATE: APRIL 1958 SHEET NO. 16

Drawn by - E. W.
Checked by - B. T.

FOR INFORMATION ONLY

SHEET A-42
236 PP