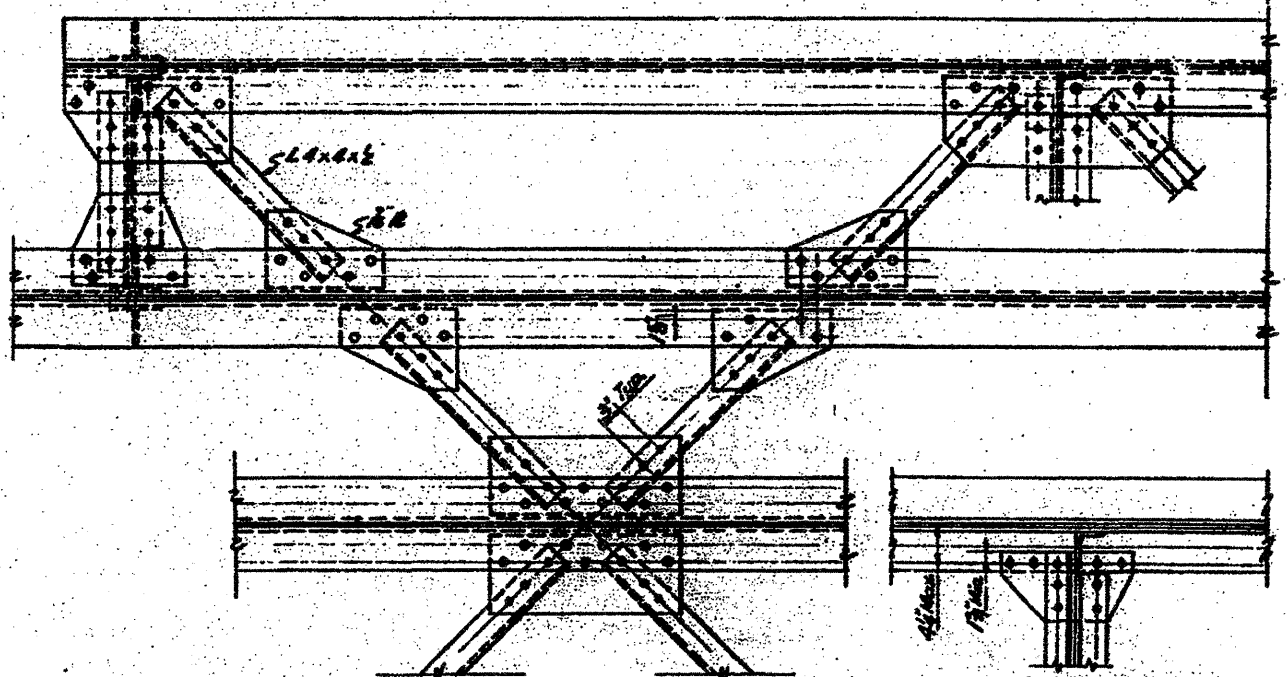
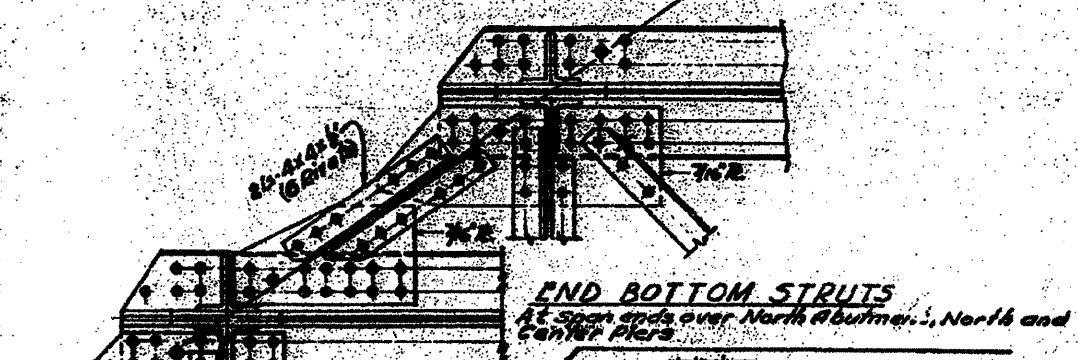


TOP LATERAL BRACING SPAN 1, 2 & 3

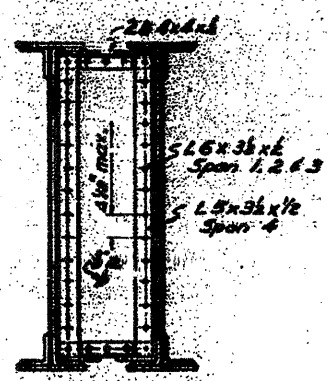


TOP LATERAL BRACING SPAN 4

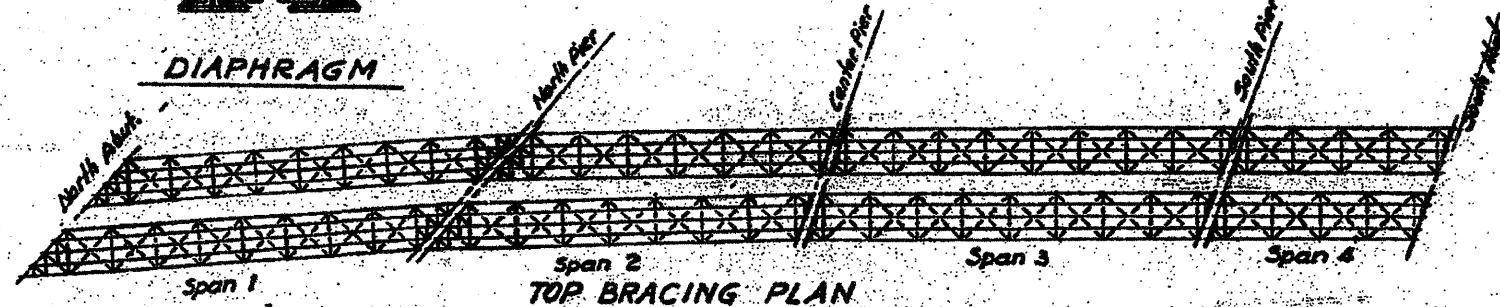
CONNECTION OF DIAPHRAGM TO BOTTOM FLANGE FOR SPAN 4



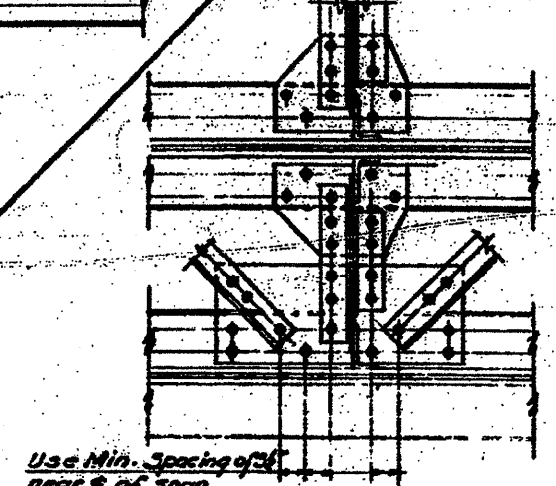
END BOTTOM STRUTS At span ends over North Abutment, North and Center Piers



DIAPHRAGM



TOP BRACING PLAN



BOTTOM LATERAL BRACING SPAN 1, 2 & 3



BOTTOM BRACING PLAN

NOTES  
Edge distance not more than 2" or less than 1 1/2"  
Laterals shall have one rivet pass through lateral and flange.

STATE OF ILLINOIS  
DEPARTMENT OF PUBLIC WORKS & BLDGS.  
DIVISION OF HIGHWAYS  
&  
CITY OF EAST ST. LOUIS  
EAST ST. LOUIS EXPRESSWAY  
L. & N. R. R. OVER WEST BOUND EXPWAY, RAMP 'L' EAST BOUND EXPWAY AND RAMP 'M'  
LATERAL DETAILS  
H. W. LOCHNER, INC.  
ENGINEERS  
DATE JULY 1930 CHICAGO, ILLINOIS SHEET NO. 80

Designed by [Signature]  
Drawn by [Signature]  
Checked by [Signature]

FOR INFORMATION ONLY

SHEET A-33  
236 KK