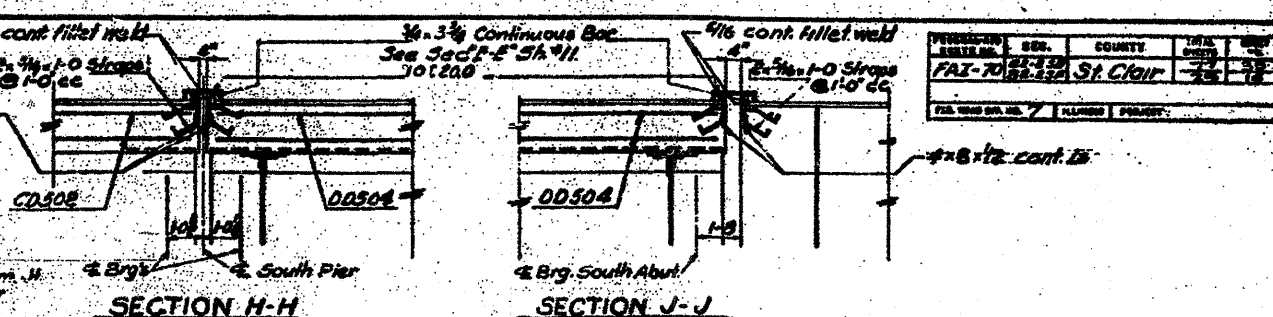
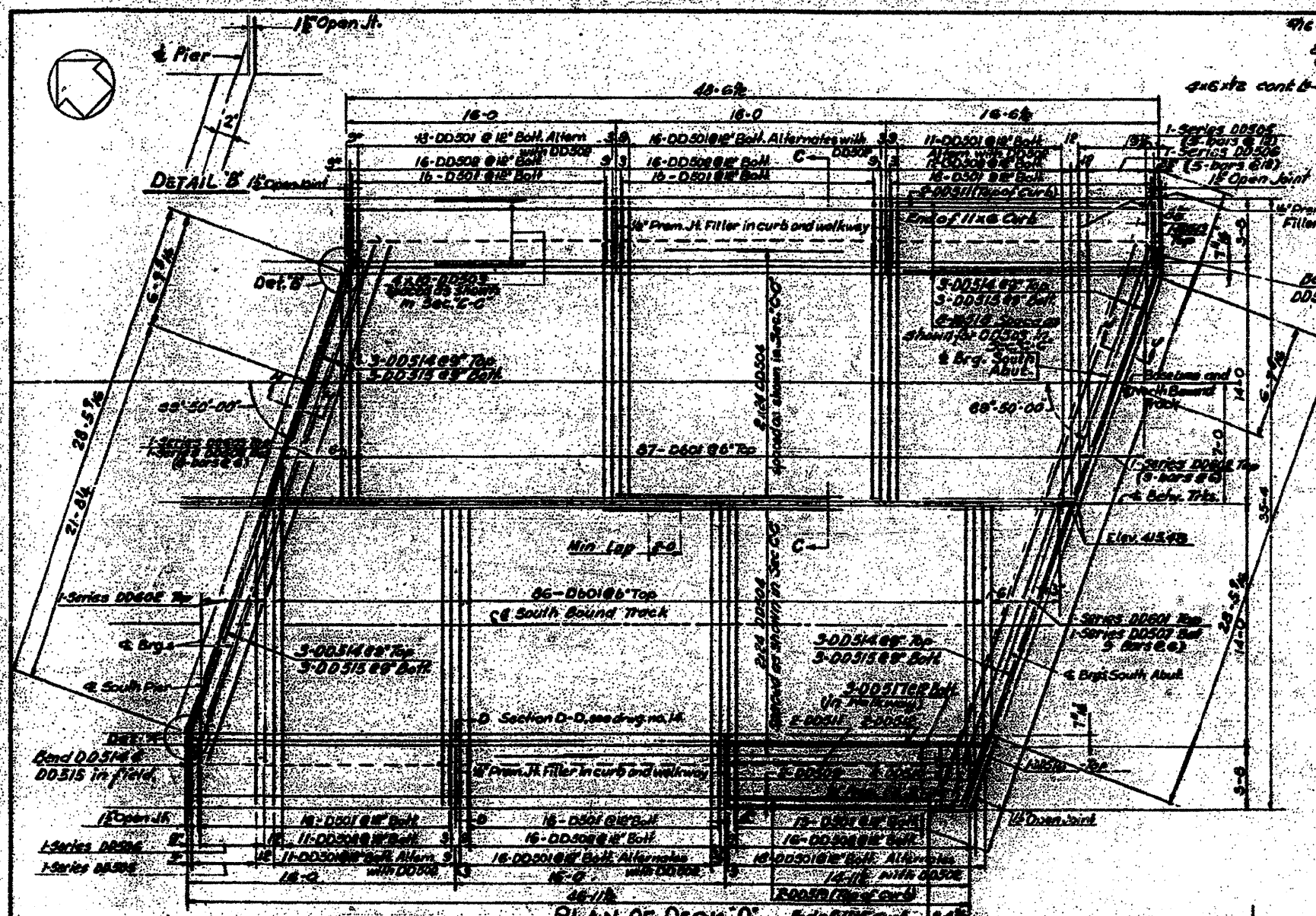
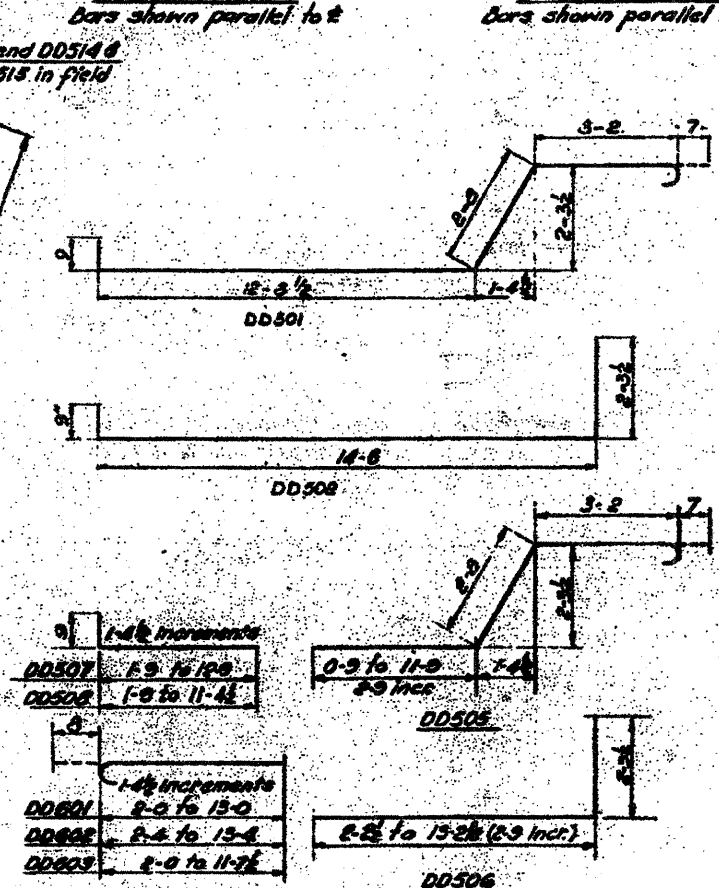


PROJECT NO.	SEC.	COUNTY	TOWN	RANGE
FAZ-70122-124	7	St. Clair	7	7
FILE NO. ON FILE	ILLINOIS	PROJECT		

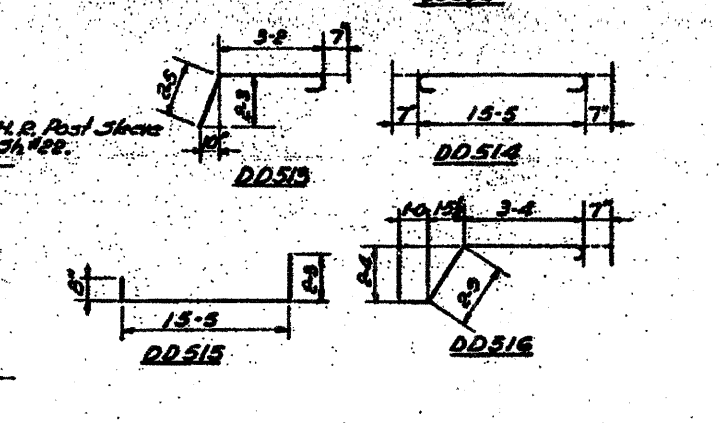
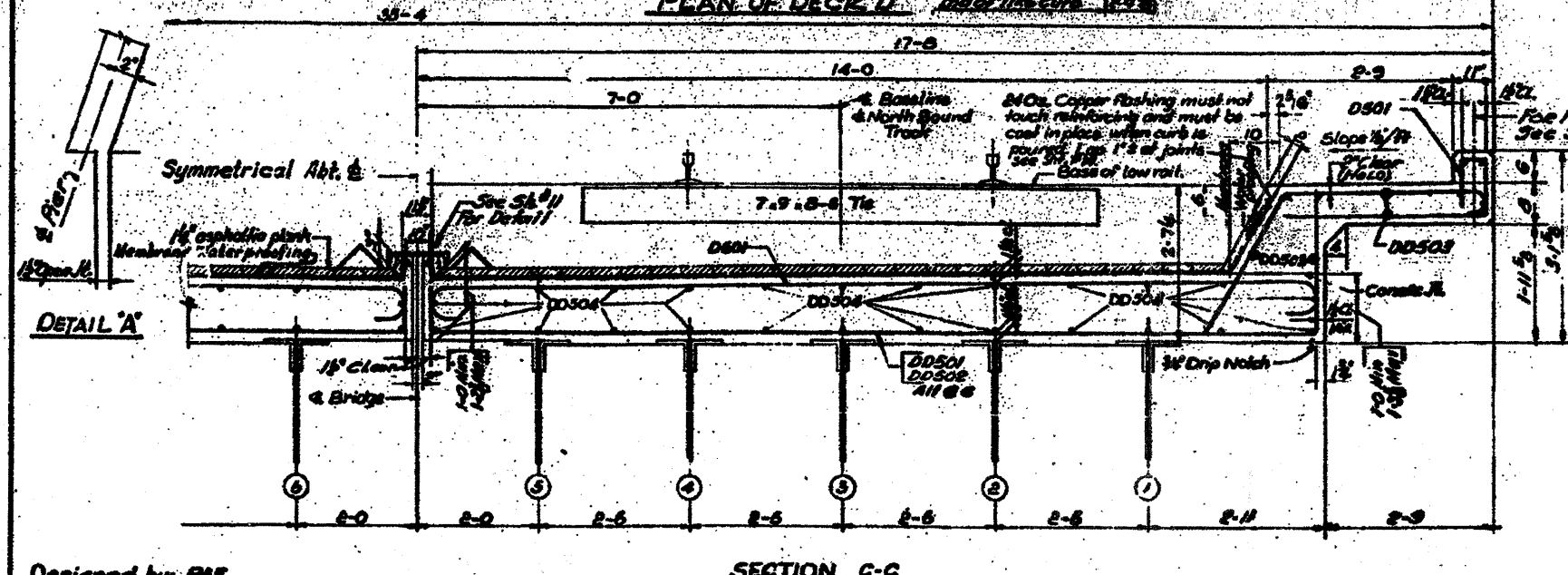


Mark	No. Req.	Size	Length	Shape
DD501	25	#3	19-11	
DD502	27		17-6	
DD503	40		15-8	
DD504	96		25-0	
DD505	2-Series as 5 bars		24-18-2 incr 2-9	
DD506	2-Series as 5 bars		1-5b 15-5 incr 2-9	
DD507	1-Series as 2 bars		5-6 to 15-6 incr 1-6	
DD508	1-Series as 2 bars		2-6 to 11-6 incr 1-6	
DD509	2		14-9	
DD510	2		15-1	
DD511	4		15-7	
DD512	2		15-10	
DD513	2		5-7	
DD514	1		6-2	
DD515	12		16-7	
DD516	12		18-4	
DD517	1		7-8	
DD518	3		3-6	
DD519	2		16-3	
DD520	2	#5	12-9	
DD601	173	#6	15-0	
DD602	1-Series 2 bars		2-8 to 11-8 incr 1-6	
DD603	2-Series 2 bars		3-8 to 11-8 incr 1-6	
DD604	1-Series 2 bars		2-8 to 11-8 incr 1-6	
DD605	1-Series 2 bars		2-8 to 11-8 incr 1-6	



For Detail of DD501 & DD601 See Sh. #18.

NOTES  
 For handrail post spacing see Sh. #28  
 For Bill of Material See Sheet #12  
 For Deck Drainage and EL. Top Deck see Sh. #23  
 For General Notes see Sh. #1



Designed by: PAE  
 Drawn by: JCS  
 Checked by: WJP

FOR INFORMATION ONLY

STATE OF ILLINOIS  
 DEPARTMENT OF PUBLIC WORKS & BLDGS.  
 DIVISION OF HIGHWAYS  
 &  
 CITY OF EAST ST. LOUIS  
 EAST ST. LOUIS EXPRESSWAY  
 L. & N. R. OVER WEST SOUND EXPWAY,  
 RAMP 'L', EAST SOUND EXPWAY AND RAMP 'W'  
 DECK 'D' AND DETAILS  
 H. W. LOCHNER, INC.  
 ENGINEERS  
 DATE: JULY 1960 CHICAGO, ILLINOIS SHEET NO. 19

SHEET A-336 EE