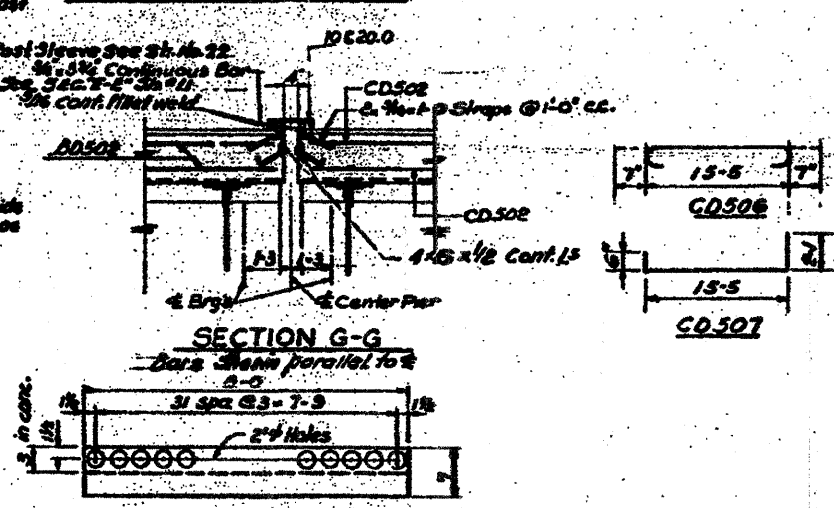
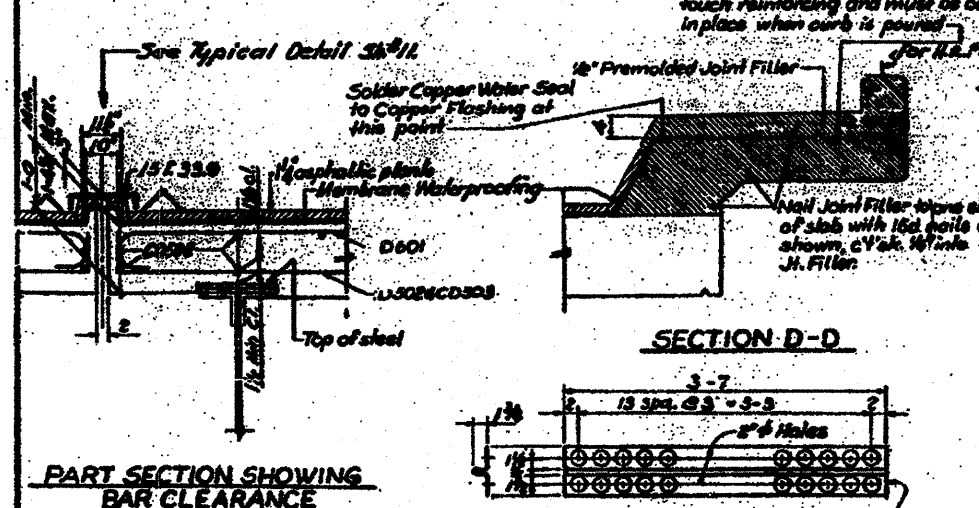
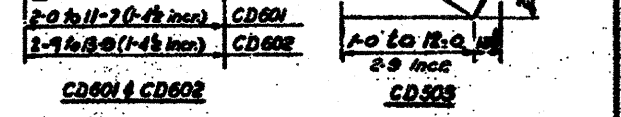


PLAN OF DECK 'C'



Mark	No. Req.	Size	Length	Shape
D501	178	#5	5'-7"	U
D502	148	#5	16'-8"	U
D503	168	#5	17'-9"	U
D504	80	#5	17'-7"	U
D505	144	#5	31'-0"	U
CD503	8 Series Bars	#5	14'-0"	U
CD504	2 Series Bars	#5	14'-0"	U
CD505	8 Series Bars	#5	14'-0"	U
CD506	12	#5	15'-7"	U
CD507	12	#5	16'-0"	U
CD508	20	#5	16'-7"	U
CD601	8 Series Bars	#6	14'-0"	U
CD602	2 Series Bars	#6	14'-0"	U
D601	334	#6	15'-0"	U



NOTES
 For handrail post spacing see Sht. # 28
 For Bill of Materials see Sht. # 12
 For Deck Drainage and CL Top Deck see Sht. # 25
 For Section B-B see Sht. # 18
 For General Notes see Sht. # 1

STATE OF ILLINOIS
 DEPARTMENT OF PUBLIC WORKS & BLDGS
 DIVISION OF HIGHWAYS
 &
 CITY OF EAST ST. LOUIS
EAST ST. LOUIS EXPRESSWAY

L & N R.R. OVER WEST BOUND EXPWAY,
 RAMP 'L', EAST BOUND EXPWAY AND RAMP 'N'
DECK 'C' AND DETAILS
 H. W. LOCHNER, INC.
 ENGINEERS
 DATE: JULY 1960 CHICAGO, ILLINOIS SHEET NO. 14

Designed by: PAE
 Drawn by: JCS
 Checked by: W.J.F.

FOR INFORMATION ONLY

236 DD
 SHEET A-30
 As Awarded