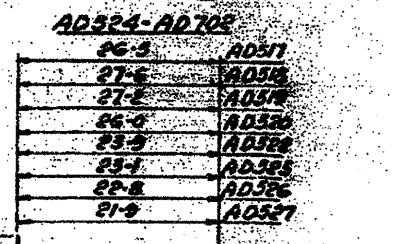
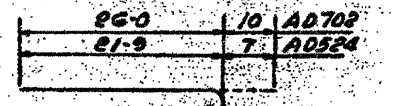
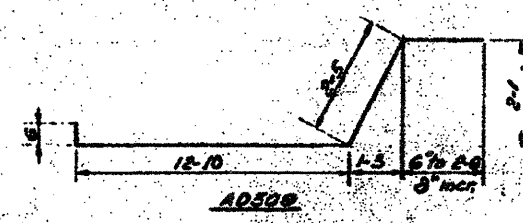
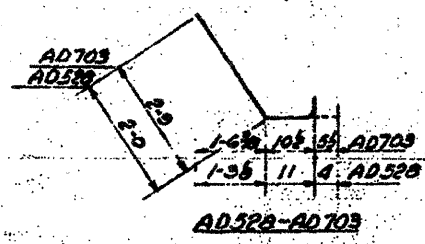
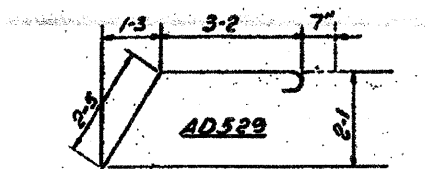
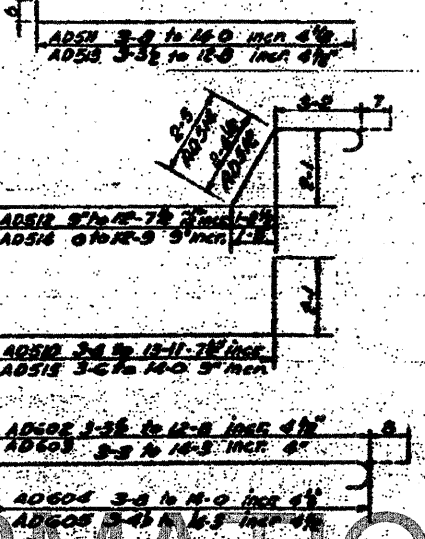
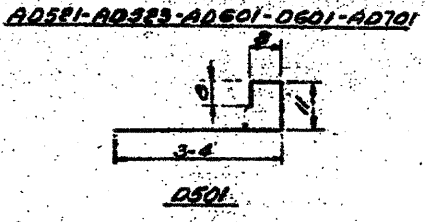
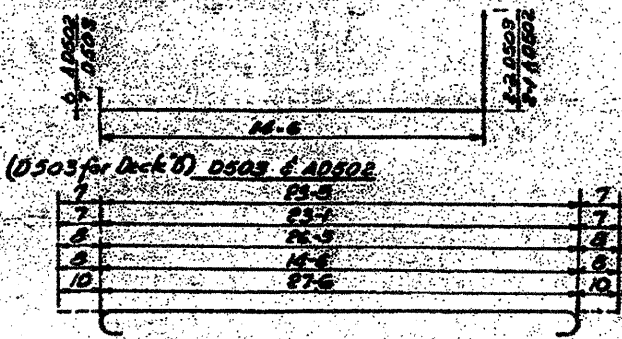
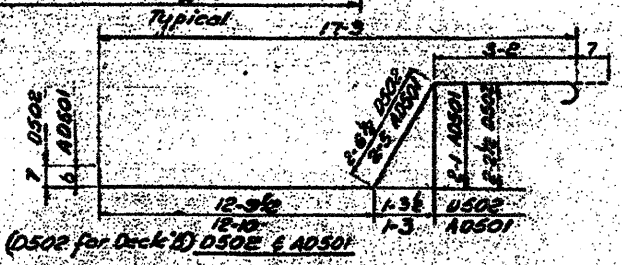


TABLE OF OFFSETS FOR FORMING CONCRETE DECK

A	X	Y	B	X	Y	C	X	Y	D	X	Y	E	X	Y
1	11-10 1/2	21-0	1	23-11 1/2	24-0	1	35-10 1/2	24-0 1/2	1	47-9	24-9 1/2	1	59-7 1/2	24-11 1/2
2	11-11 1/2	14-0	2	23-12 1/2	14-0 1/2	2	35-11 1/2	14-0 1/2	2	47-10 1/2	14-1 1/2	2	59-8 1/2	14-3 1/2
3	11-11 1/2	7-0	3	23-12 1/2	7-0 1/2	3	35-11 1/2	7-0 1/2	3	47-11 1/2	7-1 1/2	3	59-10 1/2	7-3 1/2
4	12-0	0-0	4	24-0	0-0 1/2	4	36-0	0-0 1/2	4	48-0	0-2	4	60-0	0-3 1/2
5	12-0 1/2	-10-0	5	24-0 1/2	-10-7 1/2	5	36-0 1/2	-10-7 1/2	5	48-1 1/2	-10-6 1/2	5	60-2	-10-4 1/2

F	X	Y	G	X	Y	H	X	Y	I	X	Y	J	X	Y
1	71-5 1/2	25-2 1/2	1	83-2 1/2	25-6 1/2	1	94-1 1/2	25-11 1/2	1	106-0	26-5 1/2	1	118-0 1/2	27-1 1/2
2	71-6 1/2	14-6 1/2	2	83-3 1/2	14-10 1/2	2	95-5 1/2	15-3 1/2	2	107-3 1/2	15-9 1/2	2	119-0 1/2	16-5 1/2
3	71-10 1/2	7-6 1/2	3	83-9 1/2	7-10 1/2	3	95-9 1/2	8-3 1/2	3	107-7 1/2	8-9 1/2	3	119-6 1/2	9-5 1/2
4	71-11 1/2	0-6 1/2	4	83-12 1/2	0-10 1/2	4	95-12 1/2	1-3 1/2	4	107-11 1/2	1-10 1/2	4	119-11 1/2	2-6 1/2
5	72-0 1/2	-10-1 1/2	5	84-3 1/2	-9-9 1/2	5	96-7 1/2	-9-4 1/2	5	108-6 1/2	-8-9 1/2	5	120-7 1/2	-8-1 1/2



BILL OF MATERIAL - SUPERSTRUCTURE

Structural Steel	162	2,115,000
Class 'C' Concrete	64	336
Reinforcement Bars	105	233,63
Membrane Waterproofing	31	9,170
Hand Rail	LE	629

NOTES
For Gen. Notes See Sh. #1
For Location See Sh. #2

BAR SCHEDULE

Mark	No. Req.	Size	Length	Shape
D501	194	#3	5-7	U
AD501	153		19-6	U
AD502	159		17-1	U
AD503	72		34-6	U
AD504	72		36-0	U
AD505	40		18-0	U
AD506	50		18-0	U
AD507	10		17-2	U
AD508	2-Series		10-0 to 10-6	U
AD509	1-Series		15-0 to 15-9	U
AD510	1-Series		5-5 to 10-0	U
AD511	1-Series		8-2 to 10-4	U
AD512	1-Series		6-11 to 8-0	U
AD513	1-Series		3-0 to 10-0	U
AD514	1-Series		6-10 to 8-11	U
AD515	1-Series		5-7 to 10-1	U
AD516	4		3-4	U
AD517	5		20-11	U
AD518	3		30-0	U
AD519	1		29-0	U
AD520	1		28-6	U
AD521	5		24-11	U
AD522	5		26-3	U
AD523	4		24-5	U
AD524	1		22-4	U
AD525	3		25-7	U
AD526	1		25-2	U
AD527	1		24-3	U
AD528	1		3-3	U
AD529	2		6-2	U
D601	317		15-0	U
A0601	5		27-9	U
A0602	1-Series		4-0 to 10-4	U
A0603	1-Series		3-11 to 11-4	U
A0604	1-Series		4-11 to 10-0	U
A0605	1-Series		4-11 to 10-4	U
AD701	4		29-2	U
AD702	1		26-10	U
AD703	1		4-1	U

STATE OF ILLINOIS
DEPARTMENT OF PUBLIC WORKS & BLDGS
DIVISION OF HIGHWAYS
CITY OF EAST ST. LOUIS
EAST ST. LOUIS EXPRESSWAY
L & N.R.R. OVER WEST BOUND EXPWAY, RAMP "L" EAST BOUND EXPWAY AND RAMP "N" DECK "N" BAR LIST AND DETAILS
H.W. LOCHNER, INC.
ENGINEERS
CHICAGO, ILLINOIS
DATE: JULY 1960 SHEET NO. 12

Design: B.L.
Drawn: J.S.C.
Checked: W.J.P.

FOR INFORMATION ONLY