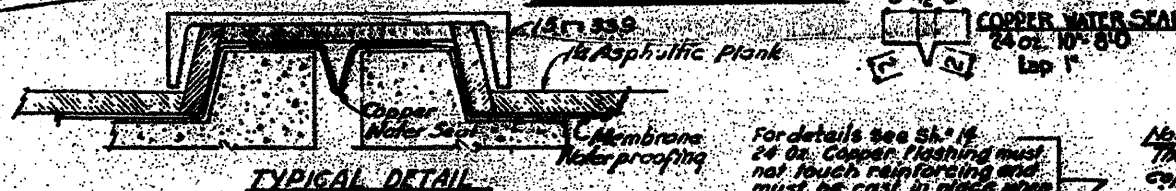
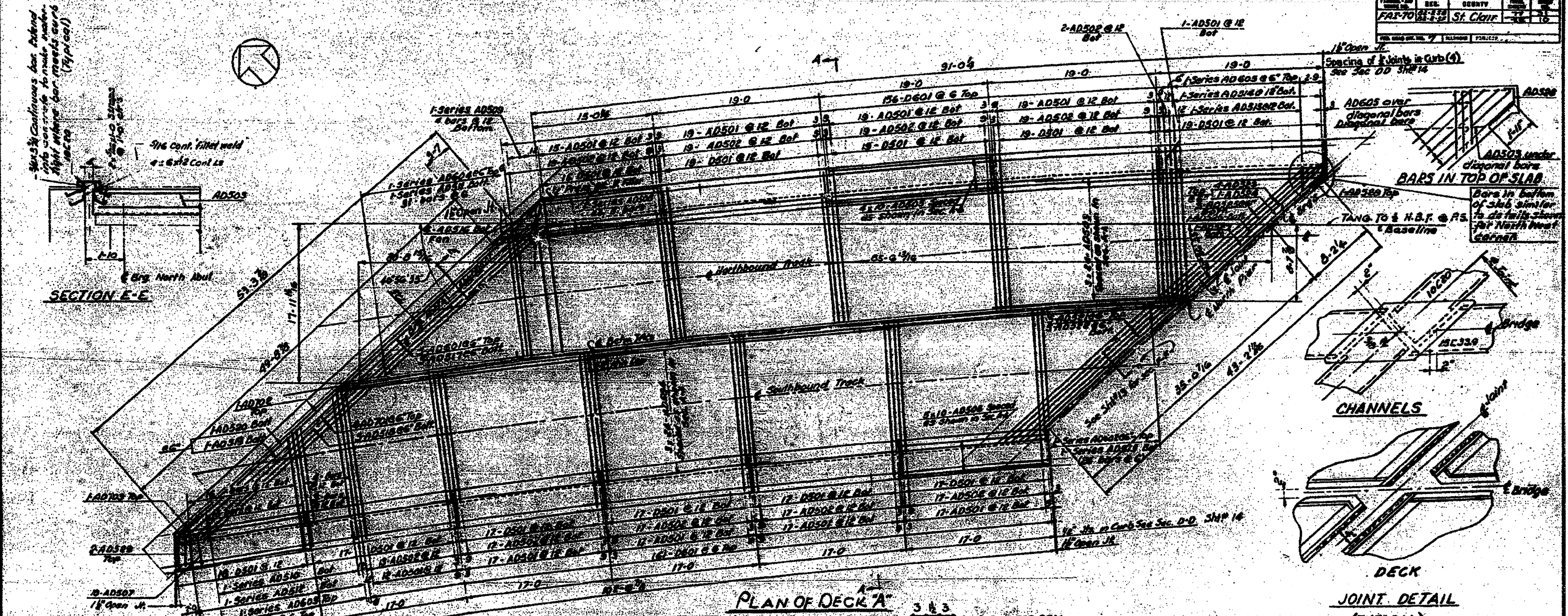
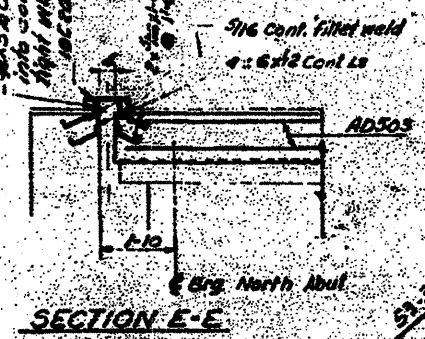


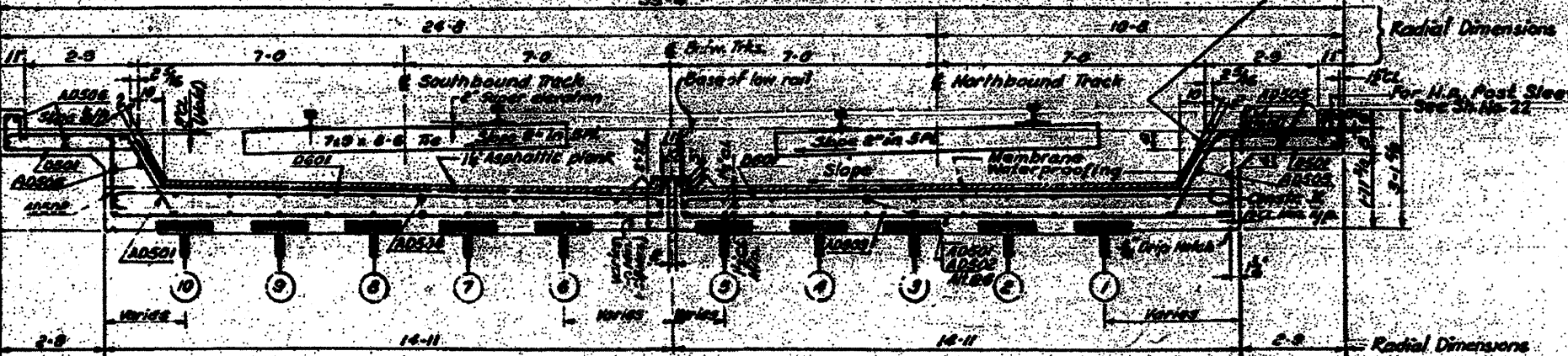
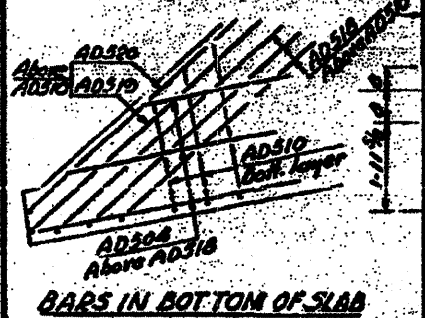
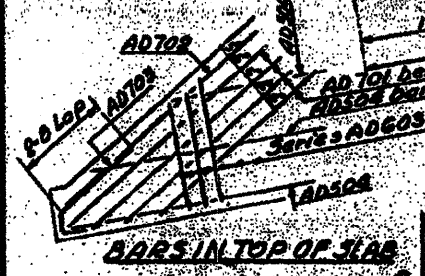
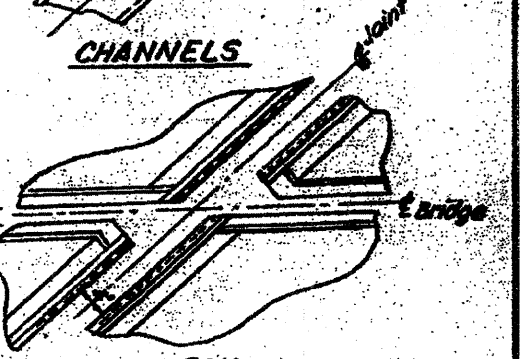
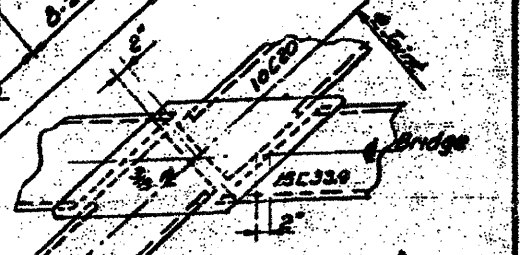
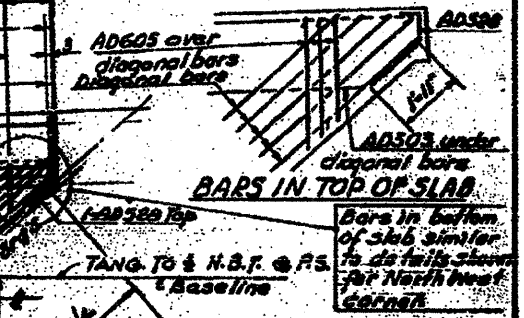
PROJECT NO.	SEC.	COUNTY	SHEET NO.	TOTAL SHEETS
FAR-70	21-1-2	St. Clair	34	16
DATE: JULY 1940				

3/8" x 3/8" Continuous bar extend into concrete to make water tight where bar meets curb (typical)



For details see Sh. 14
24 oz. Copper flashing must not touch reinforcing and must be cast in place when curb is poured - lap at joints

Note: The cost of furnishing and installing copper flashing and copper water seal is incidental to the cost of Class 'C' concrete.



NOTES:
For Handrail Post spacing see Sh. No. 22
For Bar Schedule and Bill of Materials see Sh. No. 18
For Deck Drainage and EL. Top Deck see Sh. No. 23
For General Notes see Sh. "1"

STATE OF ILLINOIS
DEPARTMENT OF PUBLIC WORKS & BLDG.
DIVISION OF HIGHWAYS
&
CITY OF EAST ST. LOUIS
EAST ST. LOUIS EXPRESSWAY
L. & N. R. R. OVER WEST BOUND EXPWAY,
RAMP "L", EAST BOUND EXPWAY AND RAMP "B"
DECK "A" AND DETAILS
H. W. LOCHNER, INC.
ENGINEERS
DATE JULY 1940 CHICAGO, ILLINOIS SHEET NO. 34

Designed By PAE
Drawn By J.C.S.
Checked by W.J.F.

FOR INFORMATION ONLY

SHEET A-27 236 AA