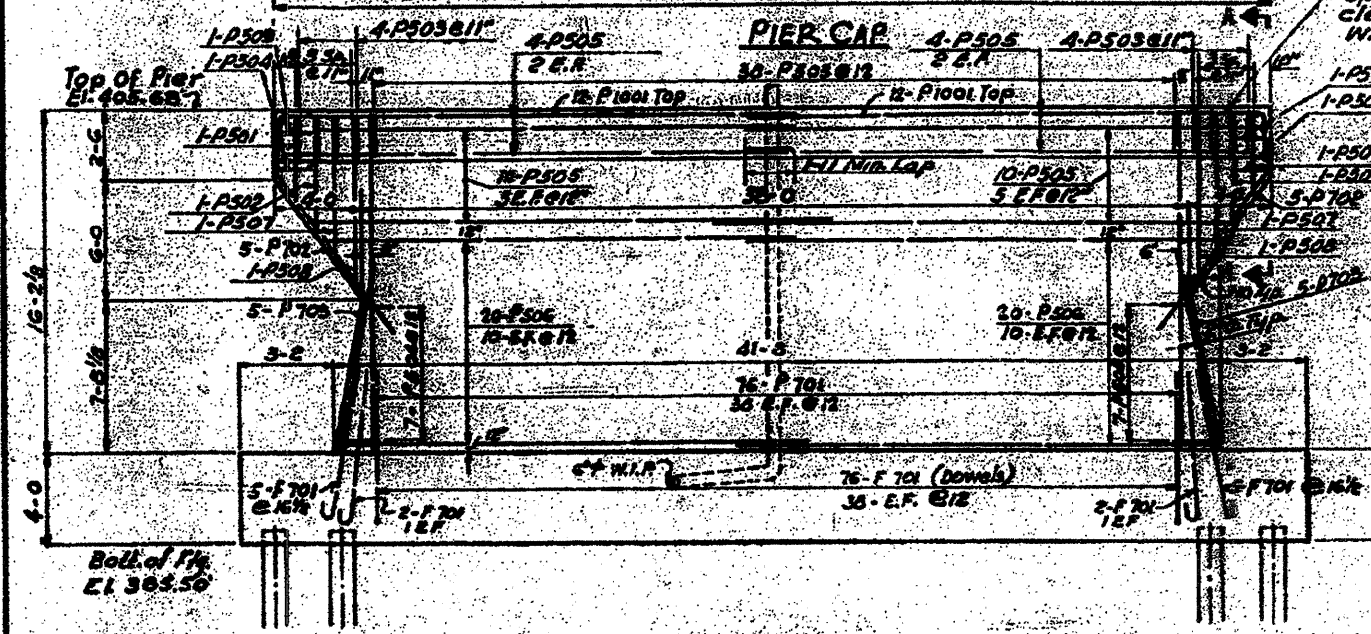
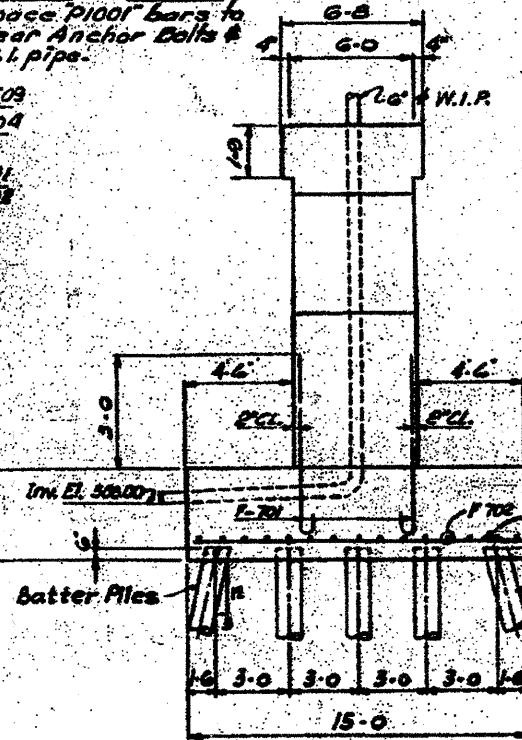


BAR SCHEDULE				
Mark	No. Reqd.	Size	Length	Shape
F 701	90	#7	7-4	U
F 702	30	#7	25-1	—
P 501	82	#5	14-6	—
P 502	2	#5	19-2	U
P 503	2	#5	15-0	U
P 504	46	#5	3-2	U
P 505	16	#5	6-0	U
P 506	20	#5	23-10	—
P 507	10	#5	21-5	—
P 508	2	#5	17-8	U
P 509	2	#5	20-6	U
P 509	2	#5	8-8	U
P 701	76	#7	16-0	—
P 702	10	#7	11-8	—
P 703	10	#7	10-3	—
P 1001	24	#10	25-1	—



Construction Note:
Space P1001 bars to clear Anchor Bolts & W.I. pipe.



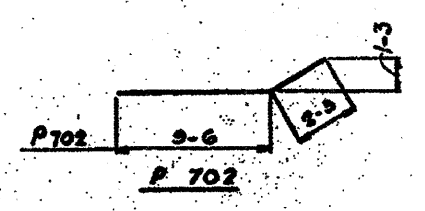
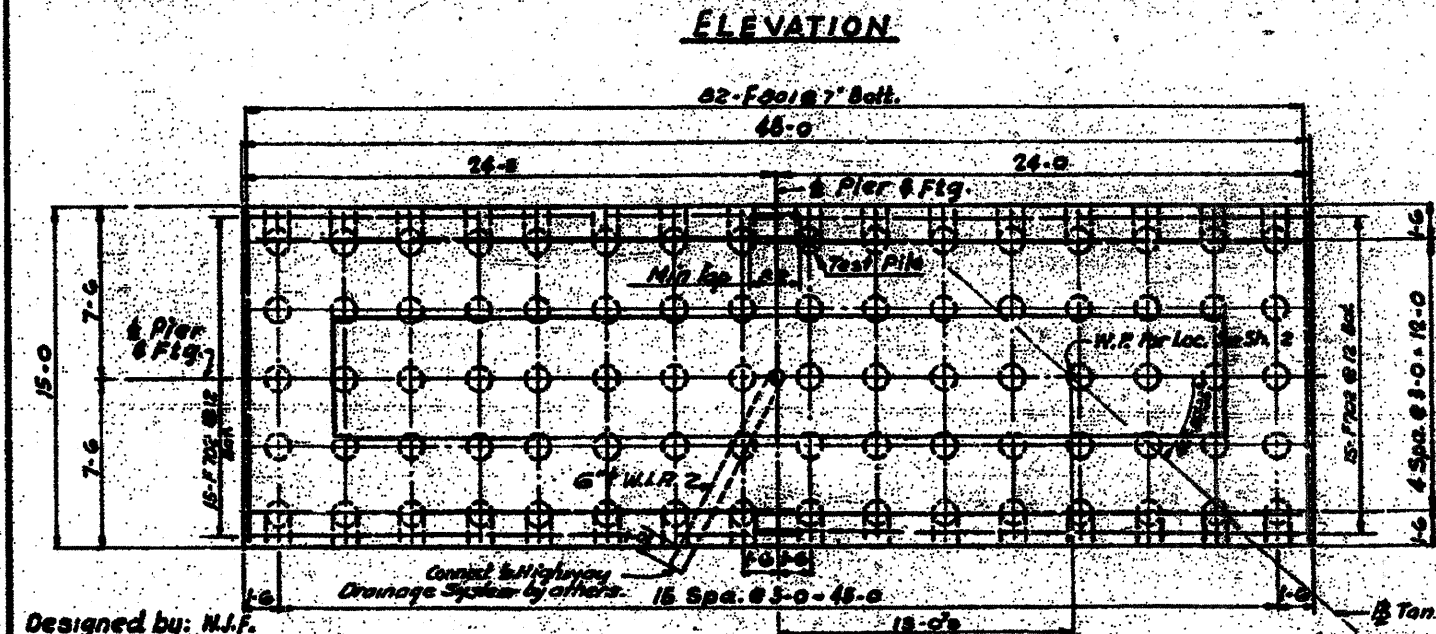
END VIEW

PILE DATA

No. Required	76
Estimated Length	41 ft.
Capacity	60 ton.
Type	Concrete Piles
Test pile	1

BILL OF MATERIALS

Class 'C' Concrete	CY	250
Reinforcement Bars	Lbs	73,000
Furnishing Concrete Piles	LF	3,235
Driving Concrete Piles	LF	3,235
Test Pile (Concrete)	ea.	1



NOTES

For general notes see sh. #1
 For Location see sh. #2
 For Drainage see sh. #23
 Care shall be taken in placing reinforcement bars so as to clear anchor bolts.

STATE OF ILLINOIS
 DEPARTMENT OF PUBLIC WORKS & BLDGS.
 DIVISION OF HIGHWAYS
 &
 CITY OF EAST ST. LOUIS
EAST ST. LOUIS EXPRESSWAY
 L & N. R. R. OVER WESTBOUND EXPWAY,
 RAMP "L" EASTBOUND EXPWAY AND RAMP "N"
 NORTH PIER
 H. W. LOCHNER, INC.
 ENGINEERS
 CHICAGO, ILLINOIS

Designed by: N.J.F.
 Drawn by: R.N.
 Checked by: J.V.

P508	7-5	5-6	P504
P507	6-0	5-8	P501, P502, P507 & P508
P506, P508	1-5	6-4	P503
P501	3-3	6-2	P509
P502	4-3		
P503	1-5		

P501, P502, P503, P504, P507, P508 & P509

FOR INFORMATION ONLY