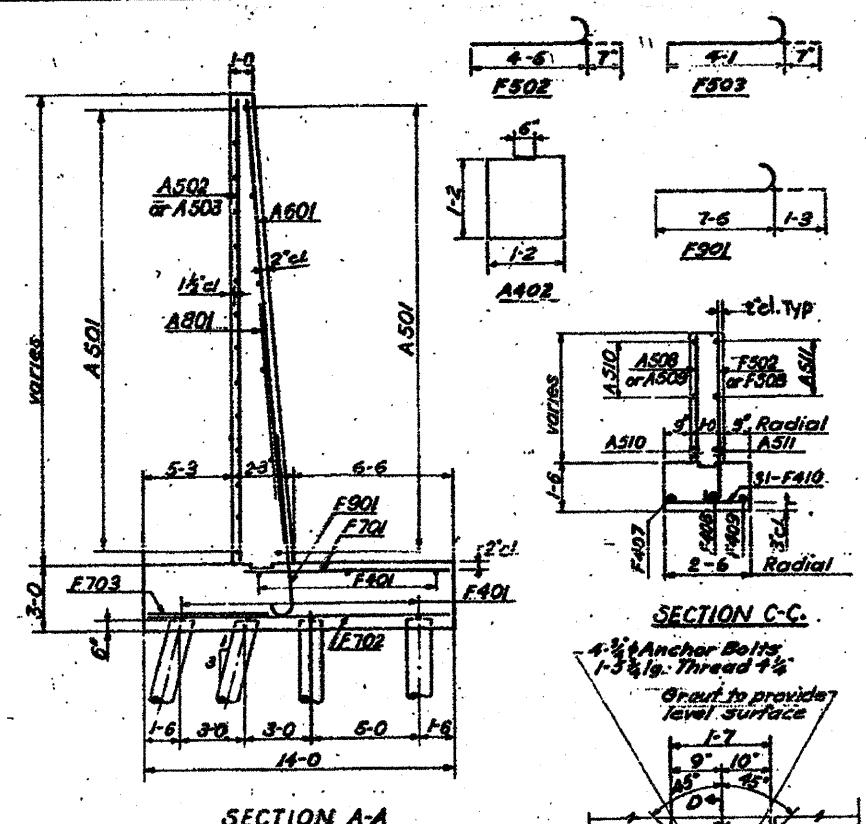
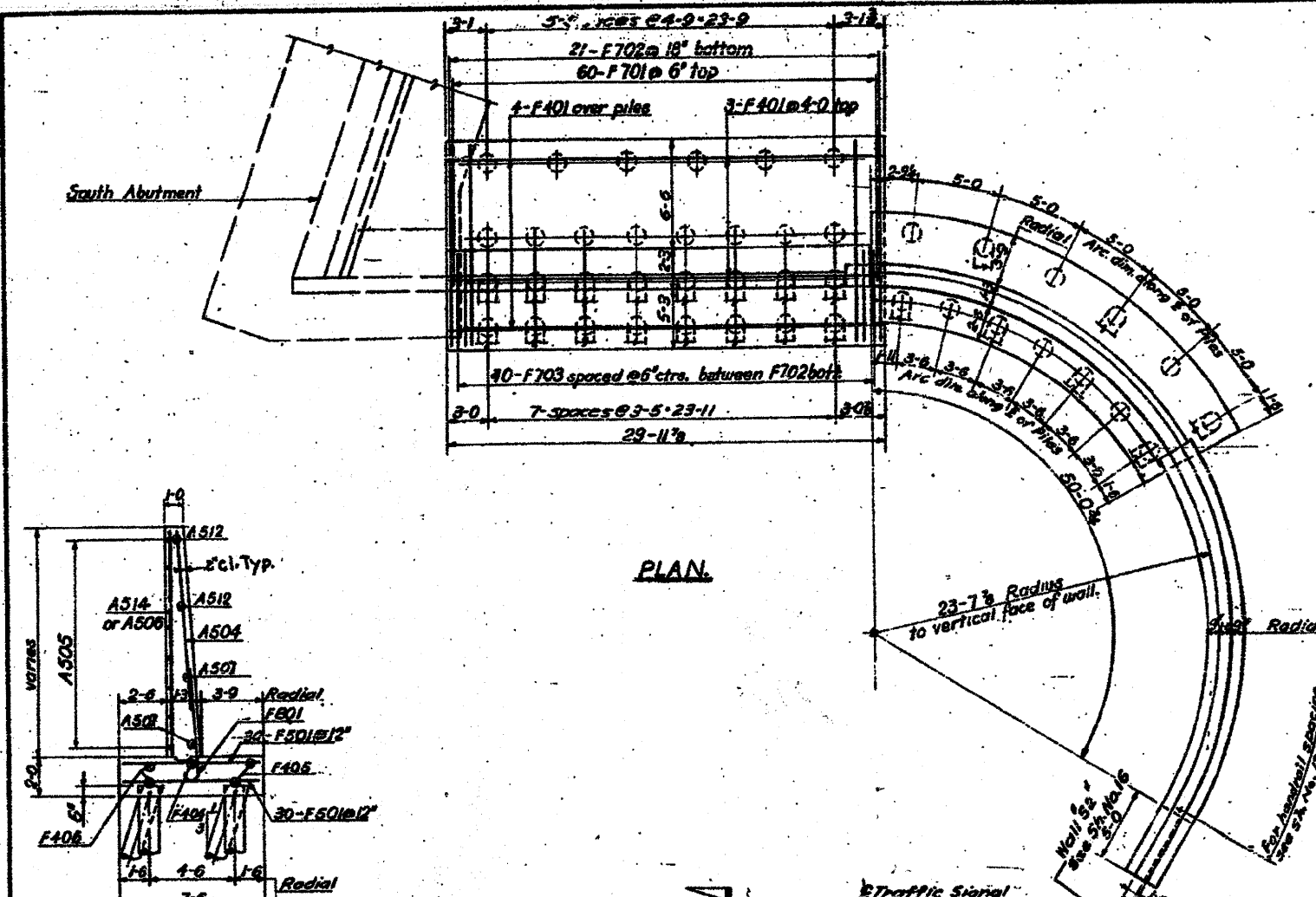
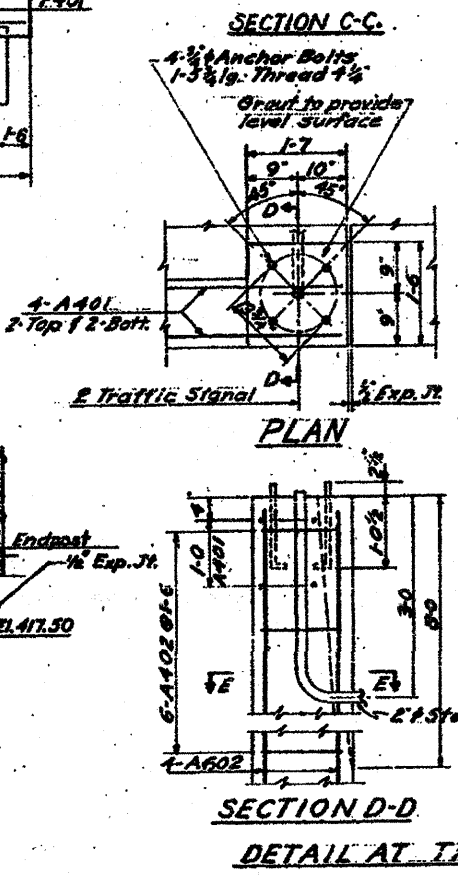
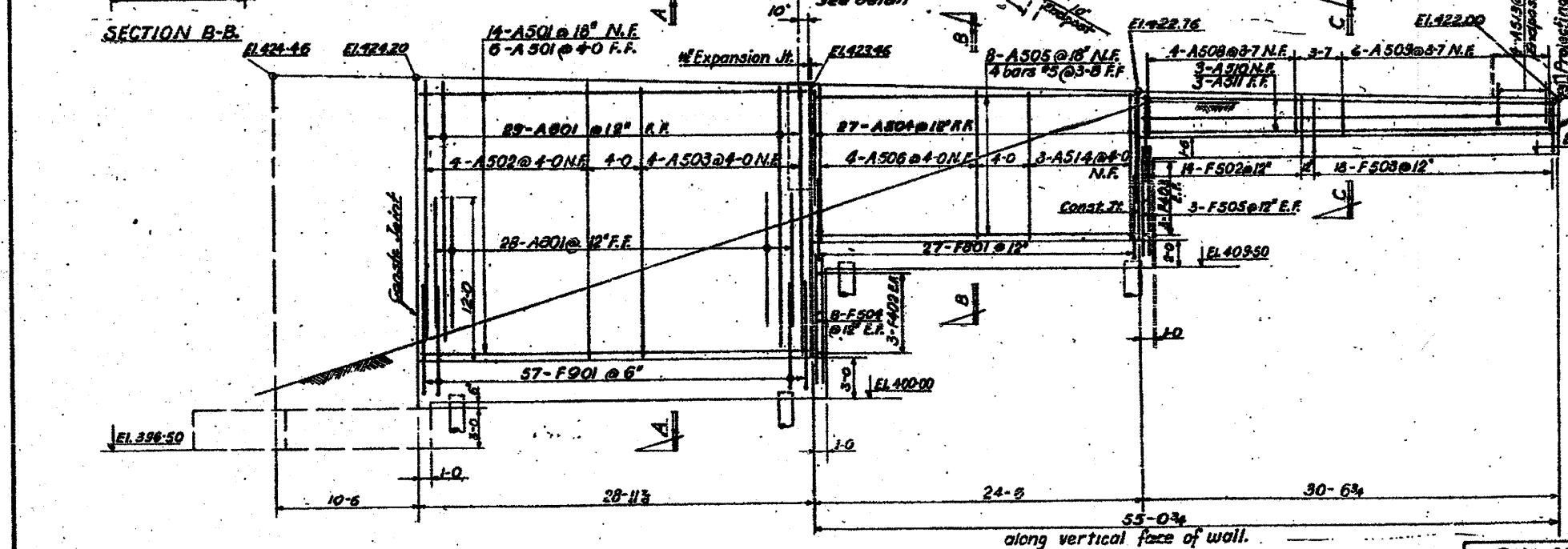


PROJECT	SHEET NO.	QUANTITY	TOTAL	DATE
F.A.I. 70	236	ST. LOUIS	79	33



BAR LIST				
Mark	Nt Req.	Size	Length	Shape
F401	7	#4	23-8	—
F402	6	#4	7-2	—
F403	6	#4	2-2	—
F404	1	#4	25-3	—
F405	2	#4	29-0	—
F406	2	#4	24-1	—
F407	1	#4	29-6	—
F408	1	#4	30-10	—
F409	1	#4	31-6	—
F410	31	#4	2-2	—
F501	60	#5	7-2	—
F502	14	#5	5-1	—
F503	18	#5	4-5	—
F504	16	#5	9-0	—
F505	6	#5	8-3	—
FOOTINGS				
F701	60	#7	8-9	—
F702	21	#7	13-8	—
F703	40	#7	7-5	—
F801	27	#8	7-8	—
F901	57	#9	8-9	—
WALLS				
A401	4	#4	5-0	—
A402	6	#4	5-2	—
A501	20	#5	28-7	—
A502	4	#5	20-8	—
A503	4	#5	20-3	—
A504	27	#5	9-8	—
A505	8	#5	24-2	—
A506	4	#5	11-5	—
A507	2	#5	25-4	—
A508	4	#5	3-2	—
A509	6	#5	2-10	—
A510	3	#5	30-3	—
A511	3	#5	30-8	—
A512	2	#5	24-11	—
A513	8	#5	5-0	—
A514	3	#5	11-0	—
A601	29	#6	19-6	—
A602	4	#6	10-0	—
A801	28	#8	10-5	—



Notes:
For handrail layout, details and End Post see sh. no. 13.
For details of expansion and construction joints see sh. no. 7

BILL OF MATERIAL - S.W. WING WALL		
Description	Units	Quantity
Class X Concrete	C.Y.	120.4
Reinforcement Bars	Lbs	8850
Furnishing Crested Piles (20' to 30')	L.F.	1151
Driving Timber Piles	L.F.	1151

PILE DATA		
No.	CAPACITY	EST. LENGTH
43	20 TON	27 FT.

STATE OF ILLINOIS
DEPARTMENT OF PUBLIC WORKS & BLDGS.
DIVISION OF HIGHWAYS
&
CITY OF EAST ST. LOUIS
EAST ST. LOUIS EXPRESSWAY
EXCHANGE AVE. OVER EXPRESSWAY
SOUTHWEST WINGWALL
H. W. LOCHNER, INC.
ENGINEERS
CHICAGO, ILLINOIS
DATE JANUARY 1936 SHEET NO. 9

Designed by RME
Drawn by EW
Checked by RME

FOR INFORMATION ONLY