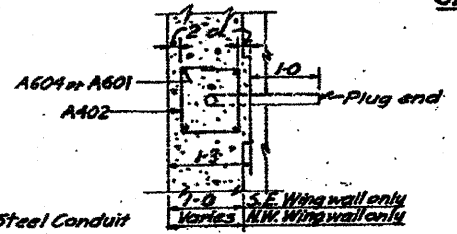
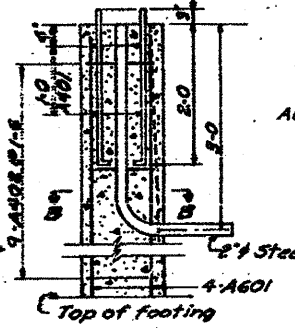
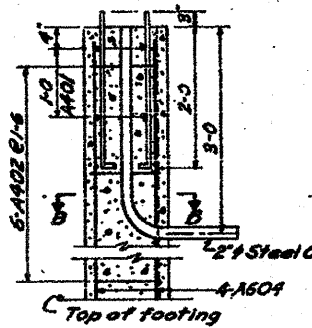
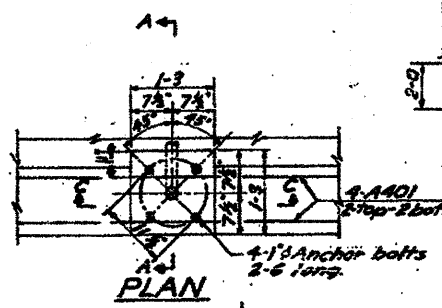
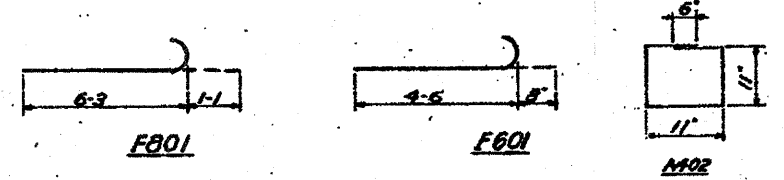
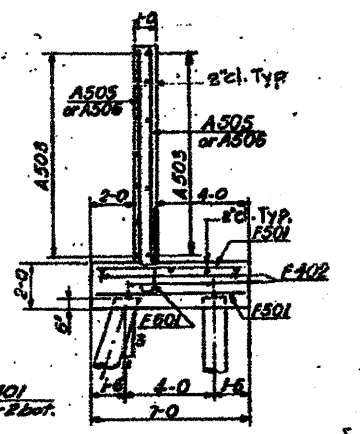
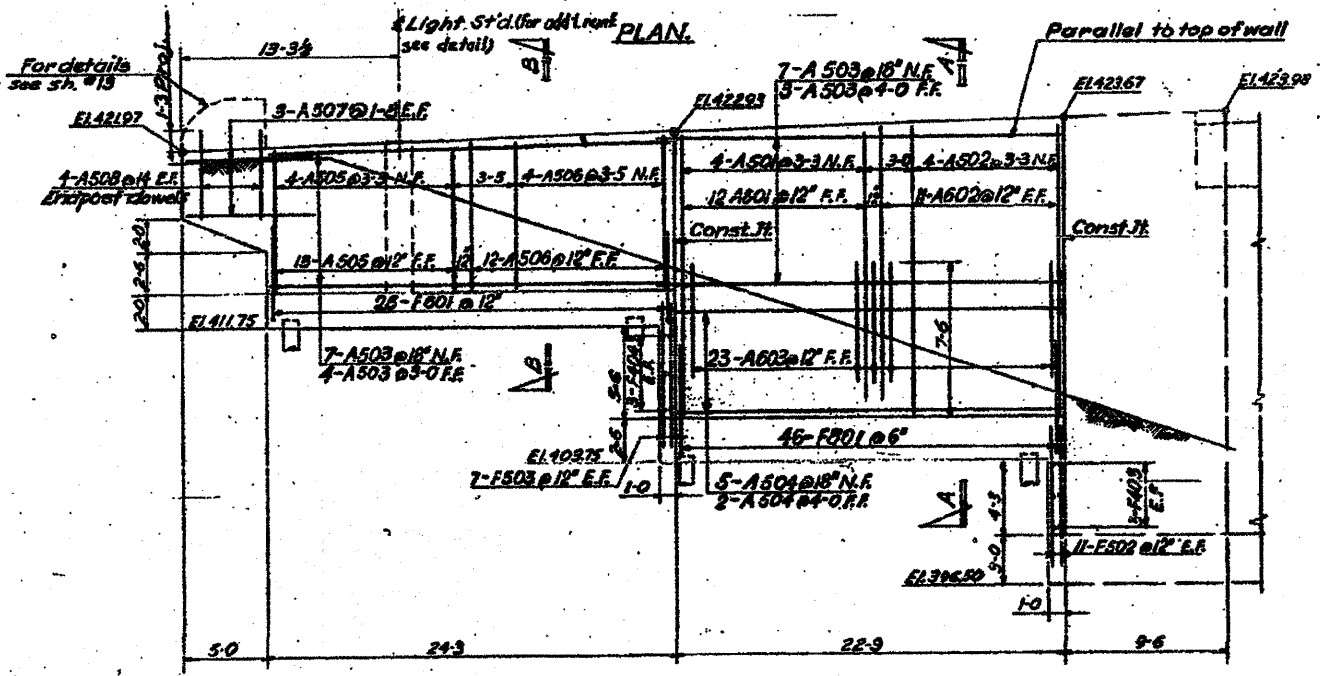


BAR LIST				
MARK	NO. PER	SIZE	LENGTH	SHAPE
F401	6	#4	23'-5"	—
F402	5	#4	23'-10"	—
F403	8	#4	10'-8"	—
F404	6	#4	6'-8"	—
FOOTINGS				
F501	50	#5	6'-8"	—
F502	22	#5	7'-6"	—
F503	14	#5	8'-6"	—
F601	25	#6	5'-2"	—
F602	48	#6	6'-9"	—
F701	18	#7	10'-8"	—
F702	18	#7	6'-8"	—
F801	46	#8	7'-4"	—
WALLS				
A401	4	#4	8'-0"	—
A402	6	#4	4'-2"	—
A501	4	#5	16'-6"	—
A502	4	#5	17'-1"	—
A503	21	#5	23'-10"	—
A504	7	#5	22'-6"	—
A505	17	#5	8'-2"	—
A506	16	#5	8'-8"	—
A507	6	#5	7'-9"	—
A508	8	#5	4'-9"	—
A601	12	#6	15'-6"	—
A602	11	#6	16'-3"	—
A603	23	#6	6'-0"	—
A604	4	#6	8'-2"	—



NOTES:
For handrail layout, details and end post see sheet No. 13.
For details of expansion and construction joints see sheet No. 1.

PILE DATA		
No.	Capacity	Est. Length
25	20 Tons	27 Ft.

BILL OF MATERIAL - S.E. WING WALL			
Description	Unit	Quantity	
Close 'X' Concrete	C.Y.	68.5	
Reinforcement Bars	Lbs.	5130	
Furnish Creosoted Piles (201 to 205)	L.Ft.	675	
Driving Timber Piles	L.Ft.	675	
Test Piles (Timber)	Ea.	1	

STATE OF ILLINOIS
DEPARTMENT OF PUBLIC WORKS & BLDGS.
DIVISION OF HIGHWAYS
&
CITY OF EAST ST. LOUIS
EAST ST. LOUIS EXPRESSWAY
EXCHANGE AVE. OVER EXPRESSWAY
SOUTHEAST WINGWALL

H. W. LOCHNER, INC.
ENGINEERS
CHICAGO, ILLINOIS

DATE JANUARY 1938 SHEET NO. 8

Designed by RMR
Drawn by EN
Checked by RMR

FOR INFORMATION ONLY

SHEET A-8
23/6/11