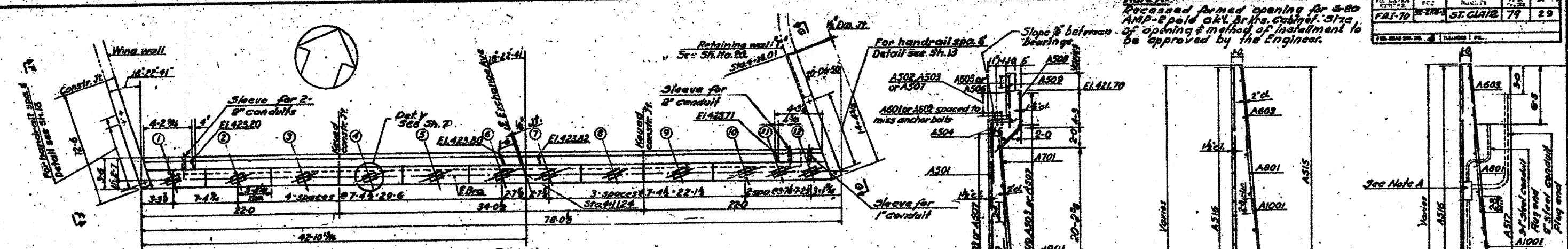
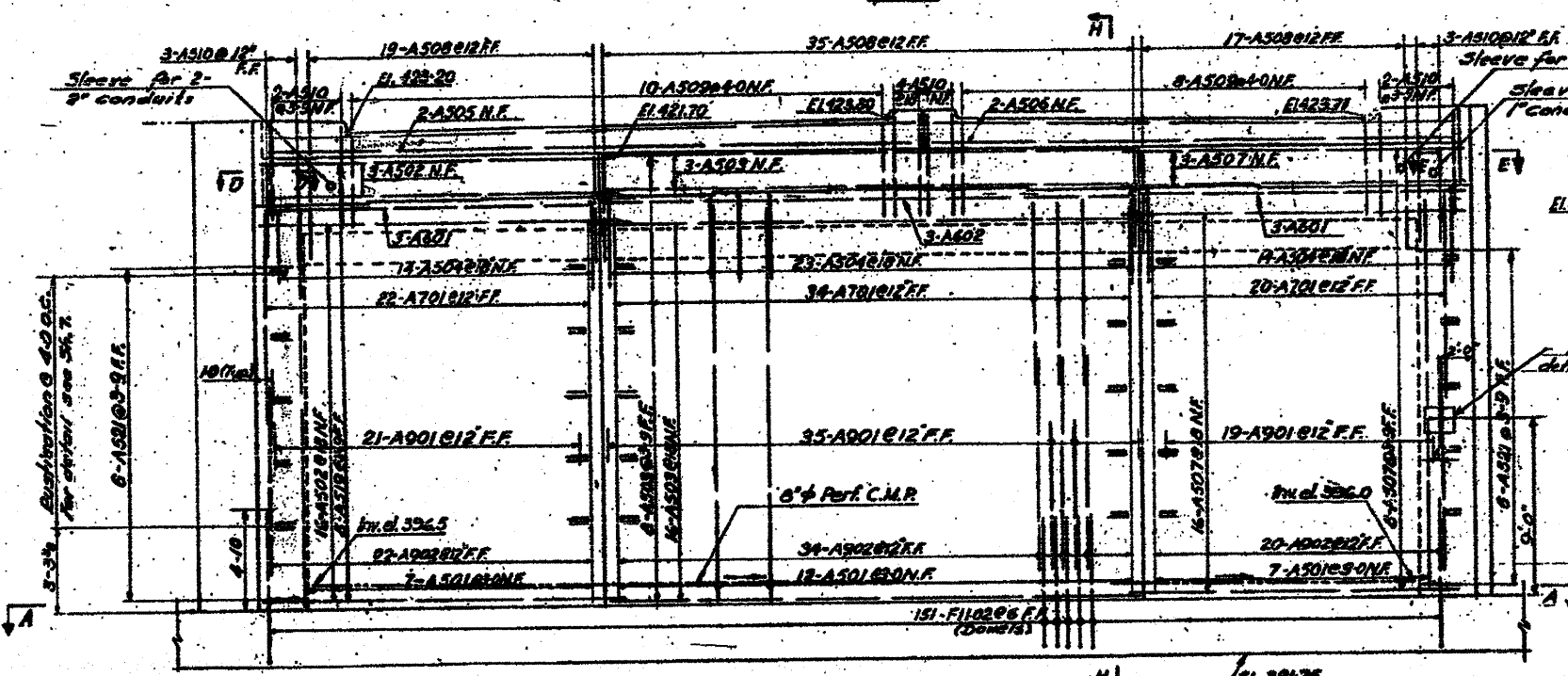


NO. DRAWN	REV.	DATE	BY
FAT-70	ST. CLAIR	79	29

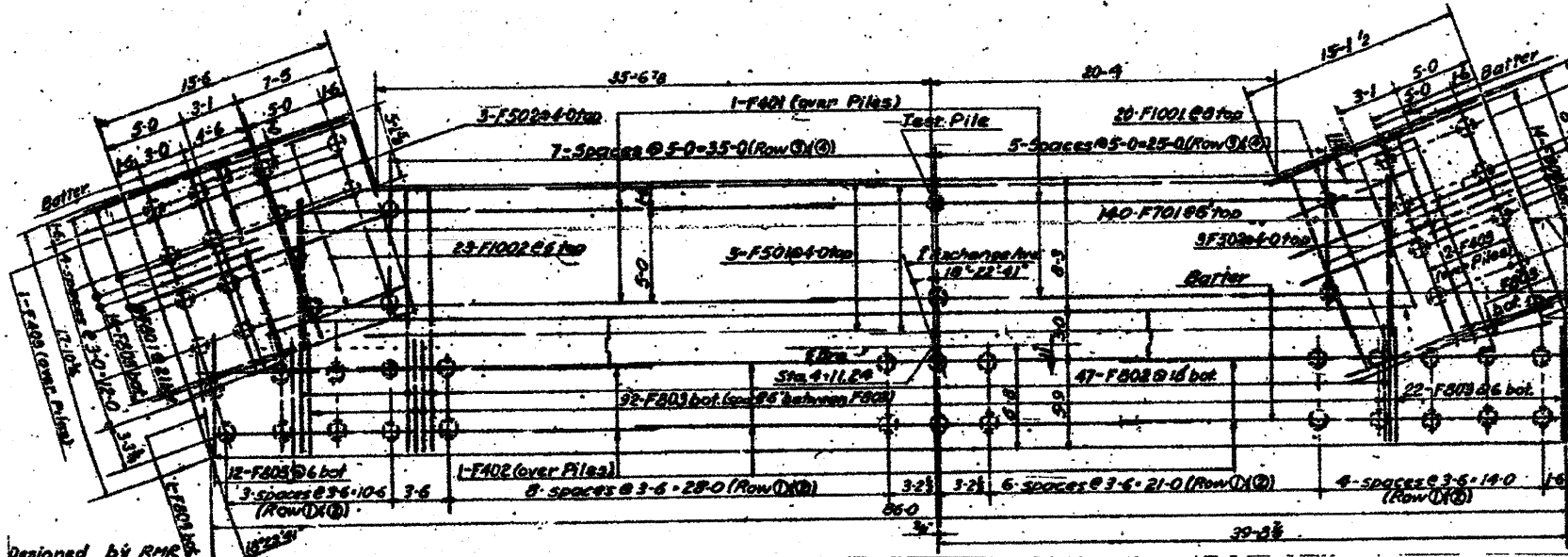
Note: Recessed formed opening for 6-20 AMP-2 pole ckt. brks. cabinet. Size of opening & method of installation to be approved by the Engineer.



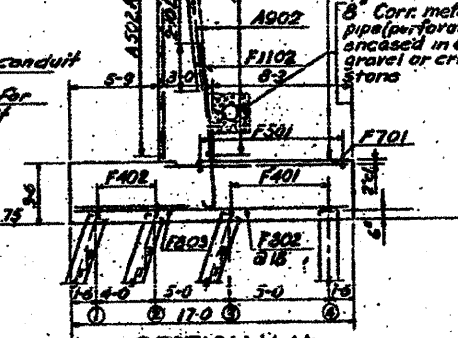
PLAN



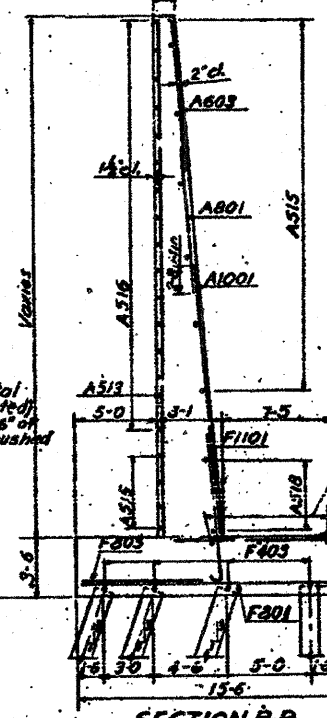
ELEVATION



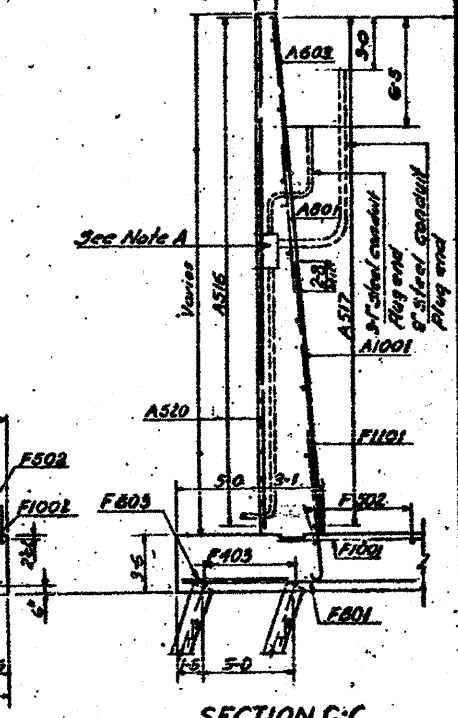
SECTION A-A



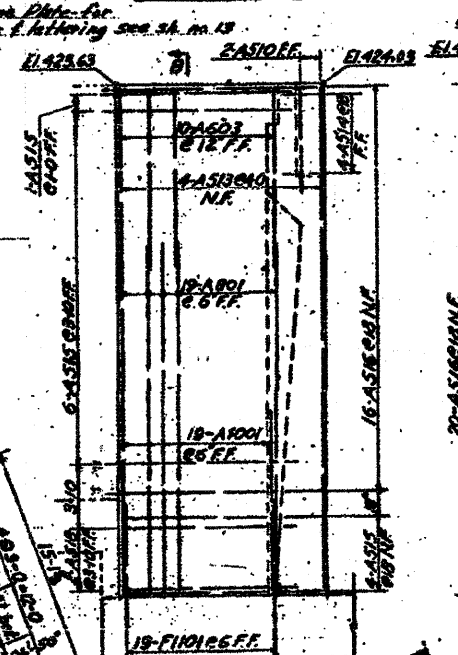
SECTION H-H



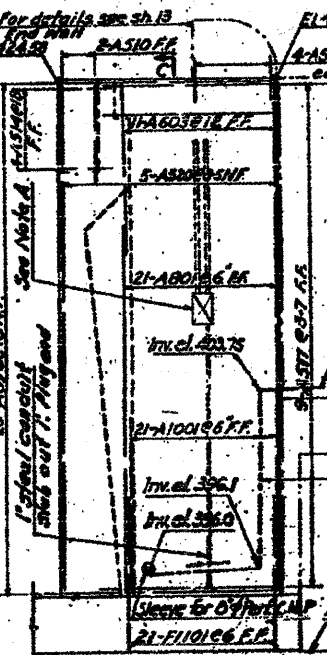
SECTION B-B



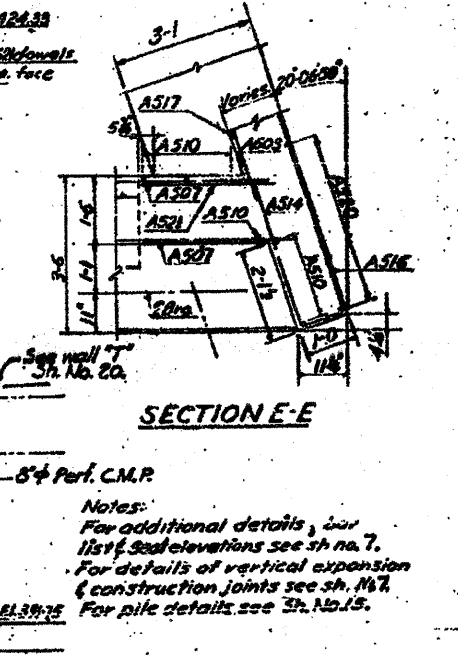
SECTION C-C



VIEW F-F



VIEW G-G



SECTION E-E

Notes:  
 For additional details, see 11st & 3rd elevations see sh. no. 7.  
 For details of vertical expansion & construction joints see sh. no. 7.  
 For pile details see sh. no. 15.

Designed by RMR  
 Drawn by ES  
 Checked by RMC

STATE OF ILLINOIS  
 DEPARTMENT OF PUBLIC WORKS & BLDGS.  
 DIVISION OF HIGHWAYS  
 &  
 CITY OF EAST ST. LOUIS  
 EAST ST. LOUIS EXPRESSWAY  
 EXCHANGE AVE. OVER EXPRESSWAY  
 NORTH ABUTMENT  
 M. W. LOCHNER, INC.  
 ENGINEERS  
 CHICAGO, ILLINOIS  
 SHEET NO. 5

FOR INFORMATION ONLY

SHEET A-5 236E