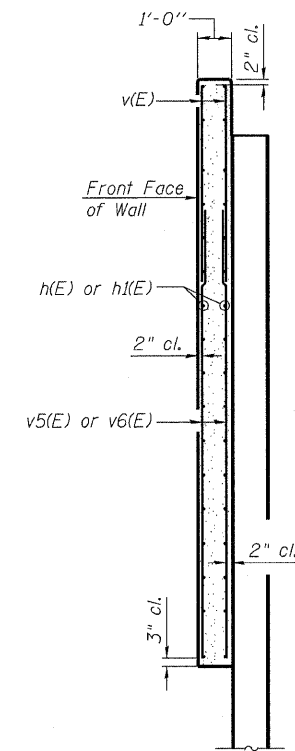
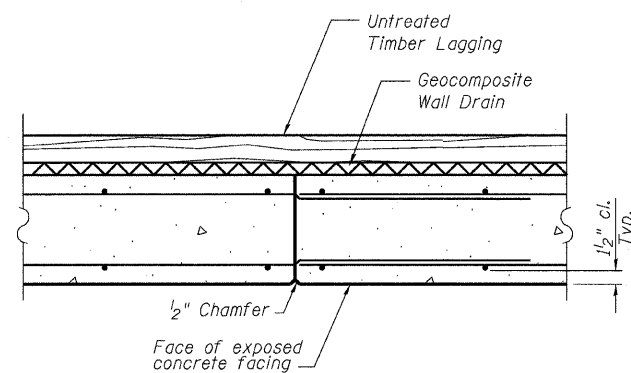


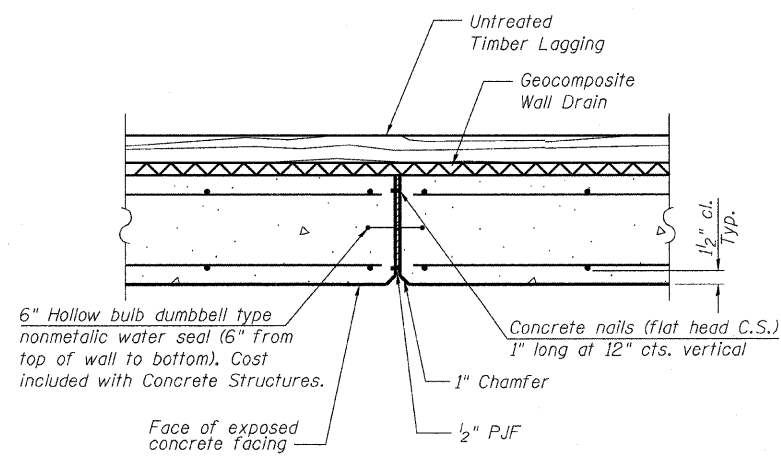
ELEVATION
(Concrete Facing Section 1)



MIN. BAR LAPS
#5 bar = 2'-2"

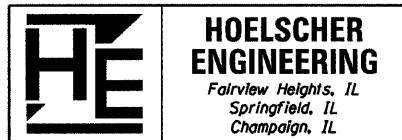


CONSTRUCTION JOINT



EXPANSION JOINT

SECTION THRU CONCRETE FACING



CONCRETE FACING SECTION 1
STRUCTURE NO. 082-W301

FILE NAME = H:\SN 082-W301 Final Plans 100909.dgn	USER NAME = default	DESIGNED - CMW	REVISED -	STATE OF ILLINOIS DEPARTMENT OF TRANSPORTATION	CONCRETE FACING SECTION 1 - RETAINING WALL 082-W301	F.A.P. RTE. 998	SECTION 82-1-IHB	COUNTY ST. CLAIR	TOTAL SHEETS 236	SHEET NO. 201		
PLOT SCALE = 2880 1' / IN.	CHECKED - JSA	REVISED -	SCALE: N.T.S.			SHEET NO. 5 OF 9 SHEETS	STA. 62+00.00 TO STA. 64+00.00	CONTRACT NO. 76C55		FED. ROAD DIST. NO. ILLINOIS FED. AID PROJECT		
PLOT DATE = 10/5/2009	DATE - OCT 9, 2009	REVISED -										