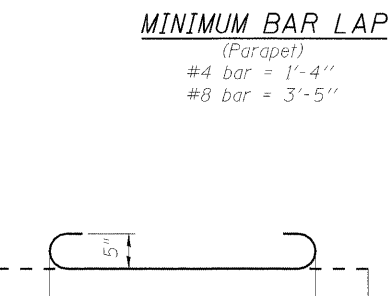
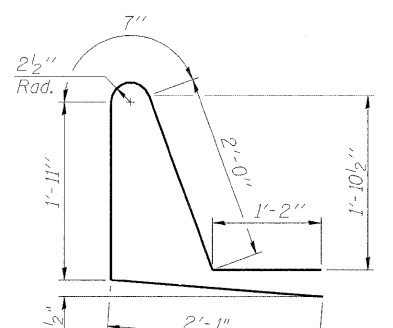
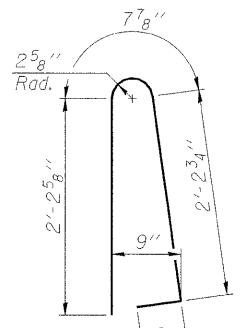
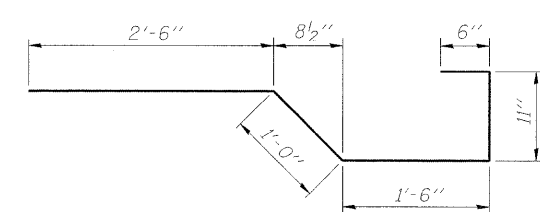
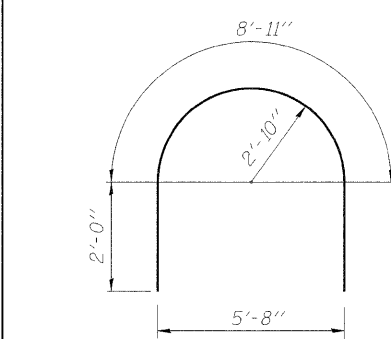
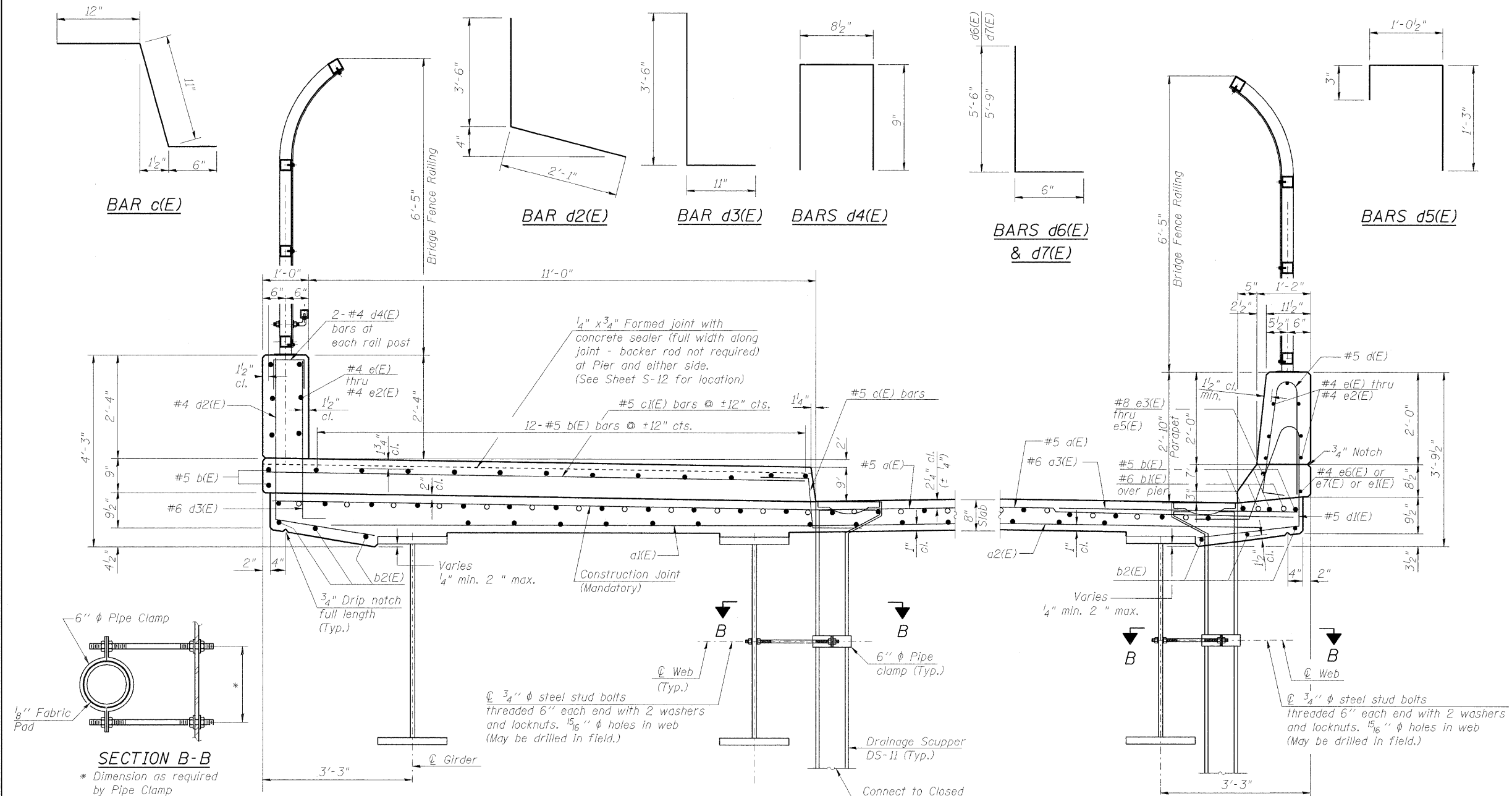


**SUPERSTRUCTURE
BILL OF MATERIAL**

Bar No.	Size	Length	Shape
a1(E)	1302	#5	22'-7"
a2(E)	398	#5	26'-2"
a3(E)	651	#6	6'-0"
a4(E)	30	#5	8'-8"
a5(E)	4	#5	20'-9"
a6(E)	16	#5	23'-6"
a7(E)	32	#5	1'-6"
b(E)	600	#5	31'-9"
b1(E)	135	#6	36'-1"
b2(E)	396	#6	29'-1"
c(E)	299	#5	2'-5"
c1(E)	259	#5	11'-7"
d(E)	326	#5	5'-7"
d1(E)	326	#5	7'-9"
d2(E)	299	#4	5'-7"
d3(E)	299	#6	4'-5"
d4(E)	62	#4	2'-3"
d5(E)	40	#4	2'-7"
d6(E)	10	#5	6'-0"
d7(E)	10	#5	6'-3"
d8(E)	6	#5	14'-5"
e(E)	78	#4	18'-2"
e1(E)	28	#4	19'-8"
e2(E)	104	#4	17'-4"
e3(E)	5	#8	31'-10"
e4(E)	2	#8	19'-8"
e5(E)	4	#8	31'-2"
e6(E)	5	#4	29'-6"
e7(E)	4	#4	29'-0"
e8(E)	29	#4	5'-8"
e9(E)	1	#8	5'-8"
x(E)	72	#5	6'-5"
Concrete Superstructure		Cu. Yd.	537.2
Reinforcement Bars, Epoxy Coated		Pound	116,630



SECTION THRU NORTH PARAPET

SECTION THRU SOUTH PARAPET

- Notes:
 1. See Sheet S-17 for Drainage Scupper Details DS-11
 2. Bars indicated thru 20x3-#5 etc. indicates 20 lines of bars with 3 lengths per line.