

**GIRDER 1**

Location	Station	Offset	Theoretical Grade Elevations	Theoretical Grade Elevations Adjusted For Dead Load Deflection
Bk. W. Abut.	16+80.06	-23.75	429.15	429.15
☉ Brg. W. Abut.	16+82.97	-23.75	429.29	429.29
IA	16+92.97	-23.75	429.76	429.80
IB	17+02.97	-23.75	430.20	430.28
IC	17+12.97	-23.75	430.61	430.71
ID	17+22.97	-23.75	430.98	431.10
IE	17+32.97	-23.75	431.32	431.43
IF	17+42.97	-23.75	431.63	431.72
IG	17+52.97	-23.75	431.90	431.97
IH	17+62.97	-23.75	432.14	432.17
II	17+72.97	-23.75	432.34	432.35
IJ	17+82.97	-23.75	432.52	432.50
IK	17+92.97	-23.75	432.65	432.63
IL	18+02.97	-23.75	432.76	432.74
☉ Brg. Pier	18+15.97	-23.75	432.85	432.85
2A	18+25.97	23.75	432.87	432.91
2B	18+35.97	-23.75	432.87	432.96
2C	18+45.97	-23.75	432.83	432.98
2D	18+55.97	-23.75	432.76	432.98
2E	18+65.97	-23.75	432.65	432.95
2F	18+75.97	-23.75	432.51	432.88
2G	18+85.97	-23.75	432.34	432.76
2H	18+95.97	-23.75	432.13	432.60
2I	19+05.97	-23.75	431.89	432.38
2J	19+15.97	-23.75	431.62	432.12
2K	19+25.97	-23.75	431.31	431.78
2L	19+35.97	-23.75	430.97	431.39
2M	19+45.97	-23.75	430.59	430.95
2N	19+55.97	-23.75	430.19	430.45
2O	19+65.97	23.75	429.75	429.90
☉ Brg. E. Abut.	19+78.97	-23.75	429.12	429.12
Bk. E. Abut.	19+81.88	-23.75	428.97	428.97

**GIRDER 2**

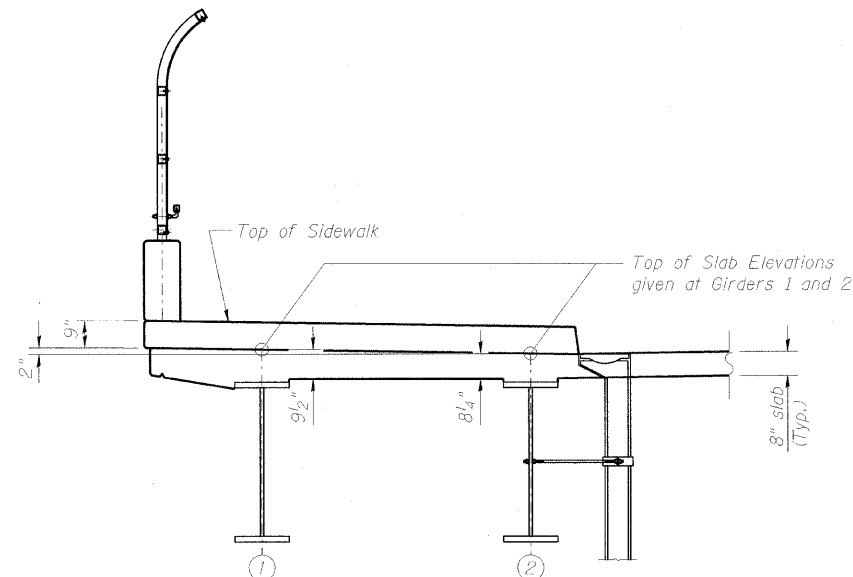
Location	Station	Offset	Theoretical Grade Elevations	Theoretical Grade Elevations Adjusted For Dead Load Deflection
Bk. W. Abut.	16+77.52	-16.33	428.93	428.93
☉ Brg. W. Abut.	16+80.43	-16.33	429.07	429.07
IA	16+90.43	-16.33	429.54	429.58
IB	17+00.43	-16.33	429.99	430.07
IC	17+10.43	-16.33	430.41	430.51
ID	17+20.43	-16.33	430.79	430.90
IE	17+30.43	-16.33	431.14	431.24
IF	17+40.43	-16.33	431.45	431.54
IG	17+50.43	-16.33	431.73	431.80
IH	17+60.43	-16.33	431.98	432.01
II	17+70.43	-16.33	432.19	432.20
IJ	17+80.43	-16.33	432.37	432.36
IK	17+90.43	-16.33	432.52	432.50
IL	18+00.43	-16.33	432.63	432.61
☉ Brg. Pier	18+13.43	-16.33	432.73	432.73
2A	18+23.43	-16.33	432.77	432.81
2B	18+33.43	-16.33	432.77	432.86
2C	18+43.43	-16.33	432.74	432.89
2D	18+53.43	-16.33	432.67	432.90
2E	18+63.43	-16.33	432.58	432.87
2F	18+73.43	-16.33	432.45	432.81
2G	18+83.43	-16.33	432.28	432.71
2H	18+93.43	-16.33	432.08	432.56
2I	19+03.43	-16.33	431.85	432.34
2J	19+13.43	-16.33	431.59	432.09
2K	19+23.43	-16.33	431.29	431.76
2L	19+33.43	16.33	430.96	431.38
2M	19+43.43	-16.33	430.59	430.95
2N	19+53.43	-16.33	430.19	430.45
2O	19+63.43	-16.33	429.76	429.91
☉ Brg. E. Abut.	19+76.43	-16.33	429.14	429.14
Bk. E. Abut.	19+79.34	-16.33	429.00	429.00

**GIRDER 3**

Location	Station	Offset	Theoretical Grade Elevations	Theoretical Grade Elevations Adjusted For Dead Load Deflection
Bk. W. Abut.	16+74.99	-8.92	428.88	428.88
☉ Brg. W. Abut.	16+77.90	-8.92	429.02	429.02
IA	16+87.90	-8.92	429.50	429.54
IB	16+97.90	-8.92	429.95	430.03
IC	17+07.90	-8.92	430.38	430.48
ID	17+17.90	-8.92	430.77	430.88
IE	17+27.90	-8.92	431.12	431.23
IF	17+37.90	-8.92	431.45	431.54
IG	17+47.90	-8.92	431.74	431.80
IH	17+57.90	-8.92	431.99	432.03
II	17+67.90	-8.92	432.21	432.22
IJ	17+77.90	-8.92	432.40	432.39
IK	17+87.90	-8.92	432.56	432.53
IL	17+97.90	-8.92	432.68	432.66
☉ Brg. Pier	18+10.90	-8.92	432.79	432.79
2A	18+20.90	-8.92	432.83	432.87
2B	18+30.90	-8.92	432.84	432.93
2C	18+40.90	-8.92	432.82	432.97
2D	18+50.90	-8.92	432.77	432.99
2E	18+60.90	-8.92	432.68	432.97
2F	18+70.90	-8.92	432.55	432.92
2G	18+80.90	-8.92	432.40	432.82
2H	18+90.90	-8.92	432.21	432.68
2I	19+00.90	-8.92	431.99	432.48
2J	19+10.90	-8.92	431.73	432.23
2K	19+20.90	-8.92	431.44	431.91
2L	19+30.90	-8.92	431.12	431.54
2M	19+40.90	-8.92	430.76	431.12
2N	19+50.90	-8.92	430.37	430.63
2O	19+60.90	-8.92	429.94	430.10
☉ Brg. E. Abut.	19+73.90	-8.92	429.34	429.34
Bk. E. Abut.	19+76.81	-8.92	429.20	429.20

**GIRDER 4**

Location	Station	Offset	Theoretical Grade Elevations	Theoretical Grade Elevations Adjusted For Dead Load Deflection
Bk. W. Abut.	16+72.45	-1.50	428.87	428.87
☉ Brg. W. Abut.	16+75.36	-1.50	429.01	429.01
IA	16+85.36	-1.50	429.49	429.53
IB	16+95.36	-1.50	429.95	430.03
IC	17+05.36	-1.50	430.38	430.49
ID	17+15.36	-1.50	430.78	430.90
IE	17+25.36	-1.50	431.15	431.26
IF	17+35.36	-1.50	431.48	431.57
IG	17+45.36	-1.50	431.78	431.84
IH	17+55.36	-1.50	432.04	432.08
II	17+65.36	-1.50	432.27	432.28
IJ	17+75.36	-1.50	432.47	432.46
IK	17+85.36	-1.50	432.63	432.61
IL	17+95.36	-1.50	432.76	432.74
☉ Brg. Pier	18+08.36	-1.50	432.88	432.88
2A	18+18.36	-1.50	432.94	432.98
2B	18+28.36	-1.50	432.96	433.05
2C	18+38.36	-1.50	432.94	433.09
2D	18+48.36	-1.50	432.90	433.12
2E	18+58.36	-1.50	432.81	433.11
2F	18+68.36	-1.50	432.70	433.07
2G	18+78.36	-1.50	432.55	432.98
2H	18+88.36	-1.50	432.37	432.85
2I	18+98.36	-1.50	432.16	432.65
2J	19+08.36	-1.50	431.91	432.41
2K	19+18.36	-1.50	431.63	432.10
2L	19+28.36	-1.50	431.31	431.73
2M	19+38.36	-1.50	430.96	431.32
2N	19+48.36	-1.50	430.58	430.84
2O	19+58.36	-1.50	430.16	430.32
☉ Brg. E. Abut.	19+71.36	-1.50	429.57	429.57
Bk. E. Abut.	19+74.27	-1.50	429.43	429.43



**LOCATION OF ELEVATIONS AT GIRDERS 1 & 2**

FILE NAME =	USER NAME = #USER#	DESIGNED - JXH	REVISED -	<b>STATE OF ILLINOIS DEPARTMENT OF TRANSPORTATION</b>	<b>TOP OF SLAB ELEVATIONS - I EXCHANGE AVENUE OVER I-55 /70 (S.N. 082-0378)</b>	F.A.I. RTE. 70	SECTION 82-1-IHB	COUNTY ST. CLAIR	TOTAL SHEETS 236	SHEET NO. 164	
#FILES#	PLOT SCALE = #SCALE#	CHECKED - CHY	REVISED -			SCALE:	SHEET NO. S-5 OF S-37 SHEETS	STA.	TO STA.	FED. ROAD DIST. NO.	ILLINOIS FED. AID PROJECT
	PLOT DATE = #DATE#	DATE - 10-09-09	REVISED -			CONTRACT NO. 76C55					